

WINKLER+ DÜNNEBIER

WD

930



Compact Palletizer





Compact Palletizer

HELIOS 930



The W+D 930 compact palletizer is not only ideal as a combined unit with the W+D 910, automatic packer but also lends itself to use as an independent module in many production plants
The advantages

- * High-performance compact palletizer with servo drives and stored program control
- * Compact dimensions of approx. 10 m2 with high functionality:
- * Automatic pallet change
- * Pallet magazine
- * Labeling
- * Slip sheets
- * Multi-functional gripper
- * Product ejection

All the advantages of non-centralized palletizing

Flexible technology for high productivity



Palletizing cell

Palletizing cell with package infeed, slip sheet magazine, labeler, gripper as well as empty pallet for automatic pallet change



Labeling

Layout for vertical labeling with roller conveyor for outward transfer of package to quality control



Layout for vertical labeling



Automatic pallet change

Automatic pallet change with transfer carriage without interrupting palletizing



Pallet magazine

Pallet magazine with separation and automatic infeed of empty pallets



Multi-functional gripper



Multi functional gripper with upper- and lower gripper sections as well as swing-out suction cups to place the slip sheets



Gripper for trays



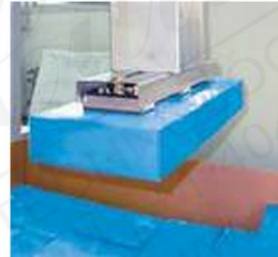
Gripper for trays, cartons and reusable boxes



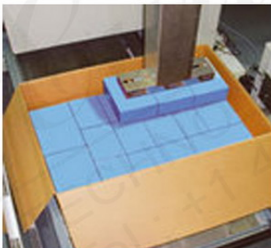
Gripper for cartons and reusable boxes



Gripper for magazine packages



Suction group gripper
MultiPic-SinglePlace suction group gripper for the simultaneous processing of several packages, also available as fork gripper



Placement

Optimized placement movement for direct palletizing into a pallet box

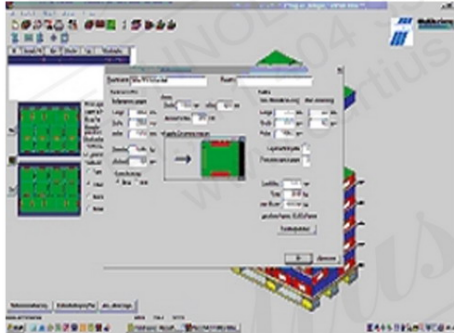


Technical Features

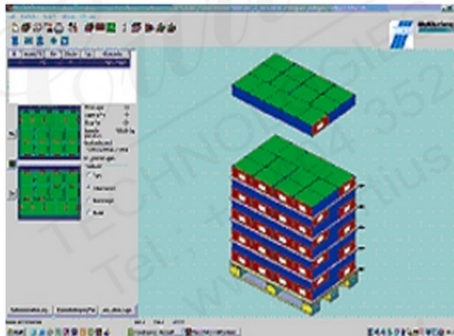
- * 4-axis one-column portal robot with telescopic axis
- * Multi-functional gripper with upper and lower gripper sections as well as swing-out suction strips to take up intermediate layers. Further gripper systems such as vacuum suction gripper or clamping jaw grippers are optional
- * Automatic pallet change with patented transfer carriage, optionally with empty pallet magazine
- * 100 mm or 160 mm unwind labeller for vertical or horizontal labelling (including over corners), optionally with online label printing
- * Slip sheets of up to 200 g/m², optionally cardboard, solid board and corrugated cardboard with automatic aligning
- * Packing unit outward conveying to quality control
- * Offline programming and simulation of the compact palletizer within a layer optimisation program with specification of label position and packing unit sides
- * All functional components within the palletizer cell, can also be retrofitted
- * Easy operation via touch screen display: 100 palletizing patterns prepared offline can be stored and edited if required, convertible to all common languages, information on machine status
- * Completely automatic pallet handling with pallet magazine
- * Modem for telemaintenance, error analysis, updates



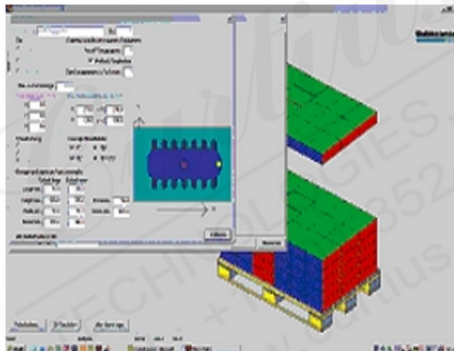
Rapid and simple offline programming



Input screen of position optimization software



Specification of optimized palletizing pattern



Selection of gripper system MultiPic-SinglePlace



Packing bundles

- All packing bundles are possible
- Dimensions for the standard sizes

- * Length
max. 600 mm (23 5/8")
min. 200 mm (7 7/8")
- * Width
max. 400 mm (15 3/4")
min. 100 mm (3 15/16")
- * Height
max. 400 mm (15 3/4")
min. 100 mm (3 15/16")

- * Weights
up to 30 kg

Capacity

depends on operation mode and bundle type
up to 4 cycles/min.
Higher speed possible with multiple gripper Pallets

- Pallet handling of four-way pallets according to DIN 15146 with lateral bottom boards

- * Pallet dimensions (*1)
1,000 x 1,200 mm
800 x 1,200 mm
800 x 1,000 mm
800 x 600 mm
40" x 48"
- * Magazine for empty pallets
up to 12 pieces
- * Pallet height
up to 2,000 mm
- * Slip sheet magazine height
min. 50 mm
max. 2,000 mm

Dimensions

- * Length
approx. 3,100 mm
- * Height
approx. 3,900 mm
- * Single station palletizer - manual pallet change
Width approx. 2,600 mm
Net weight approx. 2,700 kg
- * Single station palletizer - automatic pallet change with one empty pallet and transfer carriage
Width approx. 3,300 mm
Net weight approx. 3,700 kg
- * Single station palletizer - automatic pallet change with pallet magazine and transfer carriage
Width approx. 3,300 mm
Net weight approx. 4,000 kg
- * Double station palletizer - manual pallet change
Width approx. 3,700 mm
Net weight approx. 3,200 kg

Connected load

- * 3 x 400 V + N + PE, 50Hz
approx. 10 KW
- * Compressed air (non-oiled): 6 bar
approx. 80 l/min
- * Peak consumption: 80 l/m

(*1)

Other dimensions and variants on request. All data stated depends on product, conveying and pallet height.

