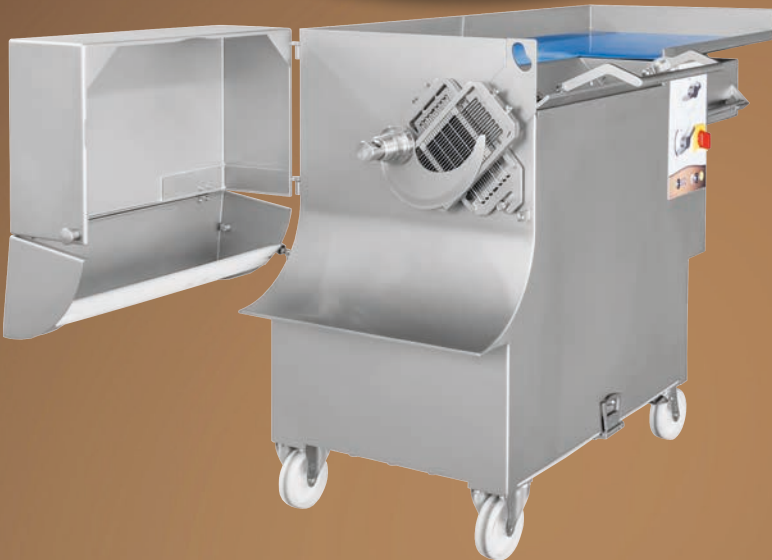
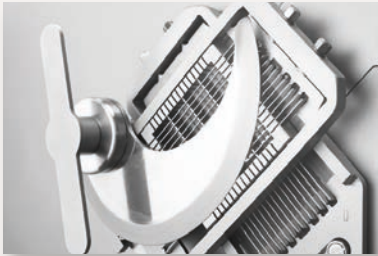


# Original AR 20

Cutting strips, dices, portions  
and grating



Powerful cutting with the best possible cutting quality. This is ensured by machine technology that can be individually adjusted to suit any product. The TwinCut system delivers the ideal cutting motion every time, while a powerful hydraulic system provides strong, consistent performance.



## Knife, cutting discs and grater

Grating discs skin thin layers from the cut item. A slicing disc produces powder-like granules from hard cheese. A cutting disc maintains precision when making big cuts. And, in addition to the all-purpose knife, a sawtooth knife Can also cut bone-containing products



## 10 seconds changeover

Open the door, remove the grid, insert the next grid and continue cutting at a different size. You won't find any faster or easier method. The easy handling enables the operator to cut any product quickly. No need to remove the cutting knife and all grid components can be safely stowed inside the tool magazine.



## Versatile grids

One grid consists of up to three parts that can be combined quickly to form additional grid sizes. It is possible to produce 13 different cutting sizes with one grid frame and 7 grid halves. The grids are mounted on wheel bearings, which makes for smooth running parts. Off - cuts left at the end of the cutting process can easily be removed.



## Perfect ejection

Cut goods are only ejected at the end of a cutting cycle. This makes the machine very safe and means that items are securely ejected. Even large pieces fall out gently and delicate items are handled with particular care. Now the euro box can be changed easily during cutting.



## Large working surface

The cutting product has plenty of space in the working area to be sorted or pre-cut. Part of the work surface can also be used as a crate rest or folded up as a chute for the product. The flexible cutting board adapts to all movements. And thanks to the large wheels, handling this large machine feels surprisingly effortless.



## Hygiene down to the last detail

Clean in places you otherwise couldn't. That's what this machine is all about. That's why it is completely enclosed and securely welded. There are no hard to reach corners and for the first time a removable base plate ensures real cleanliness under the machine.

## EQUIPMENT

TwinCut grid system \* Slanted chute \* Side pre-compression \*  
Product stabilizers \* Tool magazine \* Pressure-sensitive pre-compression \*  
Roller-mounted multiplex grid \* Comfort chassis \* Cutting board \*  
Multi-functional tray

Machine length	1.540 - 1.970 mm	Connected load	400 V, 3.8 kW, 16 A
Machine width	690 - 890 mm	Performance	max. 2.300 kg / h
Machine height	1.040 - 1.650 mm	Section length	0,5 - 60 mm
Machine weight	330 kg	Sections	200 per minute
Shaft length	600 mm	Cutting temperature	-5 °C - +80 °C
Shaft width	100 mm	Standard grid sizes	3, 5, 6, 8, 10, 12, 15, 16, 20, 24, 30, 50
Shaft passage height	100 mm		