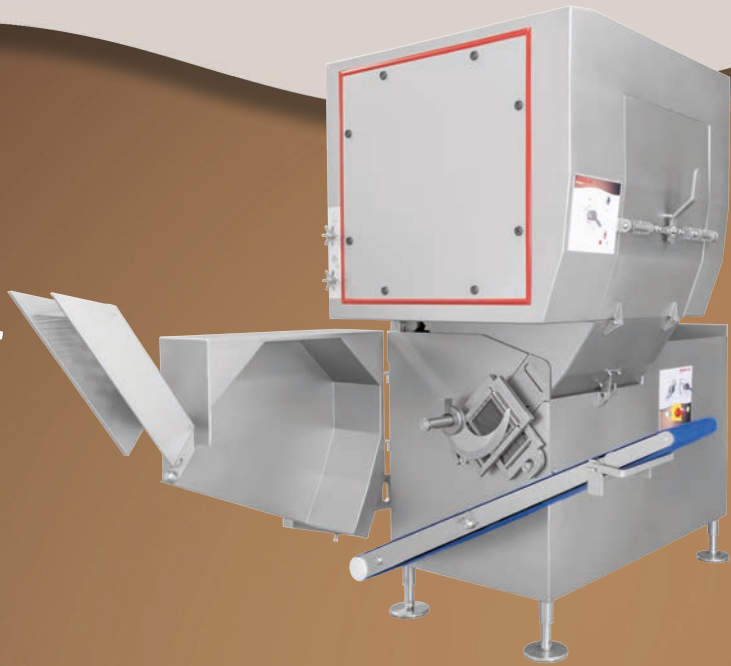
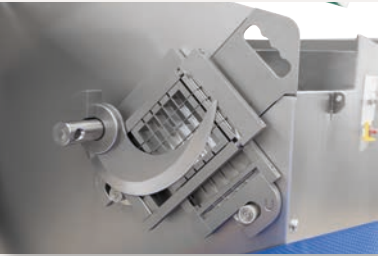


Original AR 30 Plus

Cutting strips, dices, portions
and grating



A semi- and fully automatic machine in one. When the hopper of this fully automatic cutting machine is folded down, it transforms into a semi-automatic model in just a few seconds. This allows the machine to be quickly adapted to a wide range of production needs – delivering up to 3,000 kg of cubes, strips, shreds, or portions per hour.



Multi-blade units, slicing discs, grating discs

In addition to a single blade, the machine can also be operated with a double blade, slicing discs, or grating discs. This allows the machine's performance to be doubled for many cutting tasks. At the same time, these tools open up a wide range of additional cutting possibilities. As a result, there's virtually nothing it can't cut.



Control is quick and easy

With just three simple steps, the machine can be quickly adjusted to suit the product. Using rotary controls, you select the plunger pressure, pre-compression pressure, and finally the cutting length. Additionally, functions like grating and a double cut can be activated for special cutting tasks. The machine's intelligence operates in the background, making operation as easy as possible for the user.



Dynamic grid cutting

Depending on the product, the grid and blade can be precisely coordinated in various ways. Some items require a lot of cutting motion, while others can only withstand minimal movement. A switchable gearbox mounted on the blade offers a range of adjustment options to ensure the best possible cut every time.



Quick-change system for grids

This enables a grid change in just 10 seconds, perfect cleaning in 30 seconds, and blade replacement in no more than 1 minute. The modular grid system also allows for a variety of cut sizes using only a few grids. The roller-mounted design ensures long-lasting, low-wear operation.



Standard trolley loading

A space-saving loading system is installed here, designed to transport 200-liter standard trolleys into the machine's hopper. Upon request, this system can also be adapted and supplied for use with other containers and feeding systems. A plunger in the pre-fill hopper compresses the product to ensure the cutting chute is always optimally filled. This setting can be individually adjusted for each type of product.



Discharge conveyor belt

The cut product is automatically transported from the machine into a collection container via a conveyor belt. The discharge is at a height of 750 mm, allowing easy filling of crate stacks or standard trolleys. If needed, the conveyor can also be extended for greater drop heights and lengthened to fill even larger containers, depending on operational requirements.

EQUIPMENT

Long-wave blade * Hydraulic side pre-compression * Product stabilizers * Pressure-sensitive pre-compression * Roller-mounted multiplex grids * Stepless feed compression * Dynamic drive system * Hydraulic pressure system * Discharge conveyor belt

Machine length	1740 mm - 2.660 mm	Connected load	400 V, 9,1 kW, 32 A
Machine width	2.060 - 2.120 mm	Performance	max 3.500 kg / h
Machine height	2.430 mm - 2.700 mm	Section length	0,5 - 60 mm
Machine weight	1.500 kg	Sections	0 - 300 per minute
Shaft length	600 mm	Cutting temperature	-5 °C - +80 °C
Shaft width	120 mm	Standard grid sizes	5, 10, 20, 60 / 6, 12, 24, 60 / 7, 15, 30, 60
Shaft passage height	120 mm		