



# Big Dx<sup>®</sup>

Autonomous Cleaning Equipment

No Subscriptions Fees




Run Entire Shift with No Human Intervention!

**Auto:**



**Dock**



**Ai-32**   
Clean 13+ Hours A Day  
Or All Night

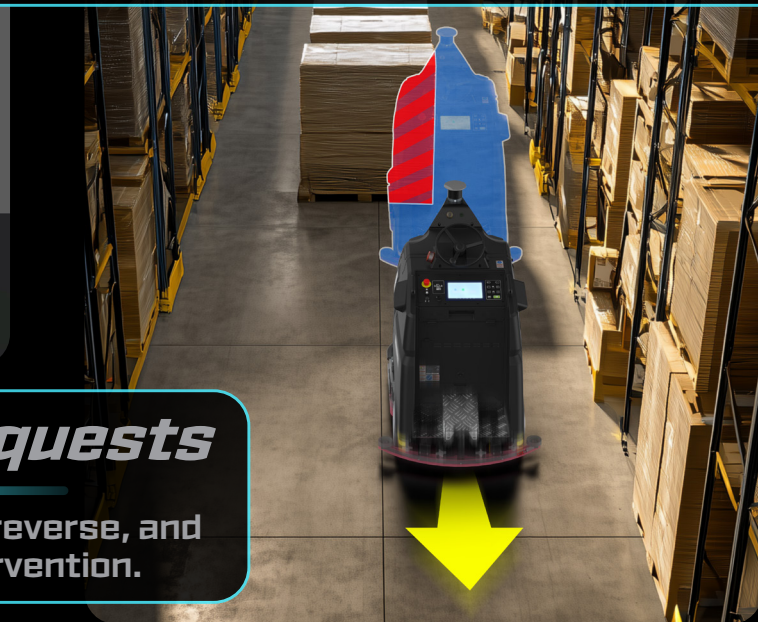


## Machine Specifications

- Cleaning Path: 32 in
  - Size (L×W×H): 64.2 × 43.3 × 57 in
  - Weight: 992 lb
  - Max Operating Time: 13+ Hrs / Day\*
  - Solution Tank: 40 gal
  - Recovery Tank: 50 gal
- \* 60% utilization w/ Dock Station 220 VAC

## Climbs Ramps Easily

- Rear Wheel Drive for better traction



## Fewer "Help Me..." Requests

- Ai-32's Path will recalculate routes, reverse, and continue cleaning without human intervention.

## Applications



Warehouses



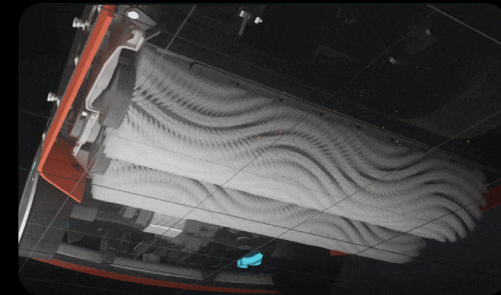
Staging Area



Lights Out

## Under The Hood

### Powerful Cylindrical Deck



#### Cylindrical Benefits

- Reduces Pre-Sweeping needs
- Scrub & Sweep Simultaneously



## Auto Self Docking

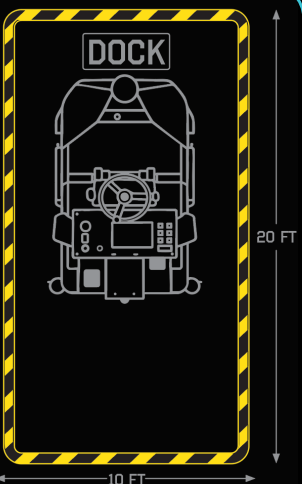
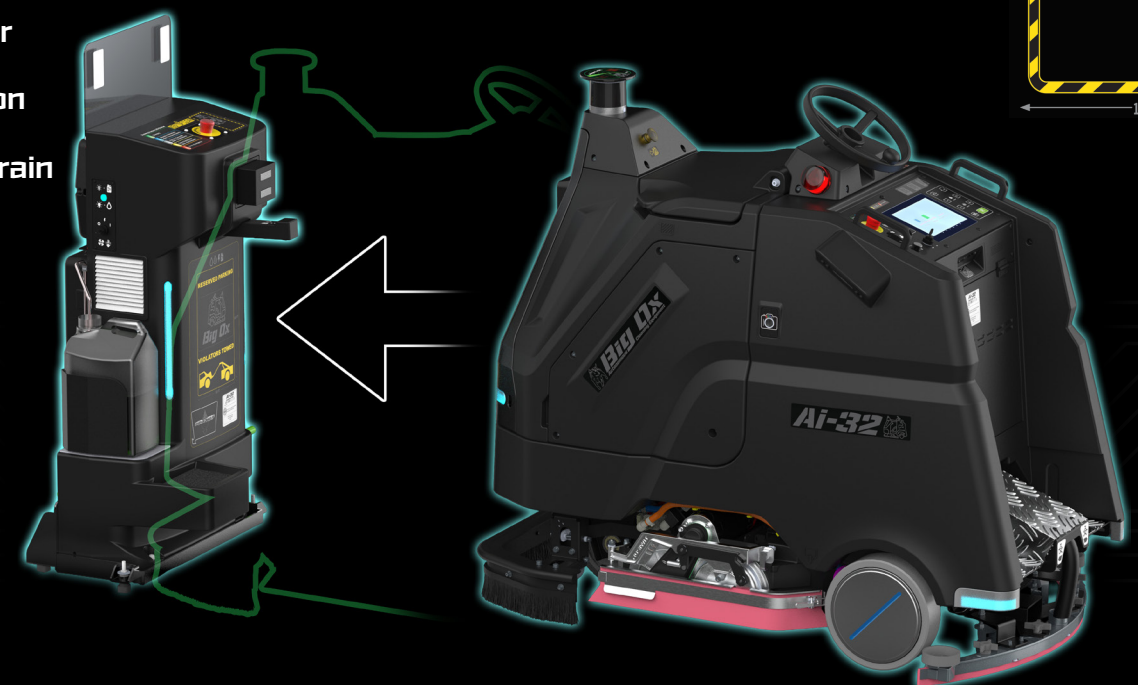
- Permits hands off lights out autonomy
- 5 Layers of redundant safety for solution filling.  
Level Gauge, Float Switch, Timer, Bypass, Auto Close Valve.

#### Safe Charge

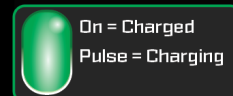
#### Fresh Water

#### Soap Dilution

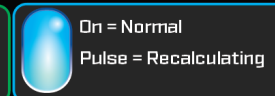
#### Recovery Drain



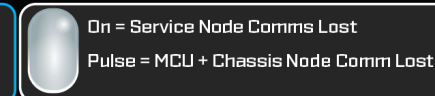
#### Scrubber LED Status



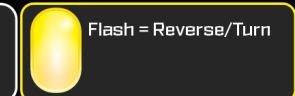
On = Charged  
Pulse = Charging



On = Normal  
Pulse = Recalculating



On = Service Node Comms Lost  
Pulse = MCU + Chassis Node Comm Lost



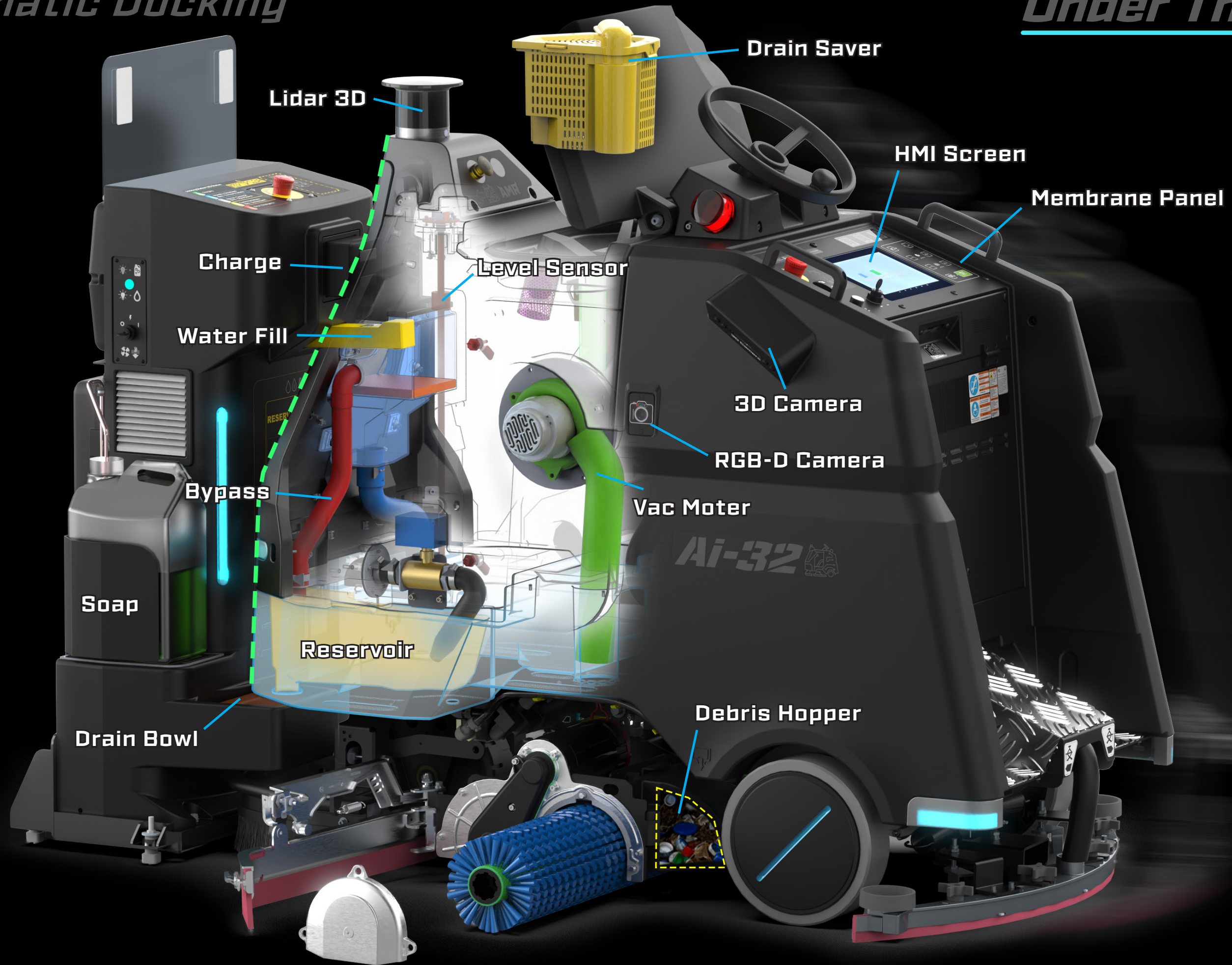
Flash = Reverse/Turn



On = Fault

# Automatic Docking

# Under The Hood



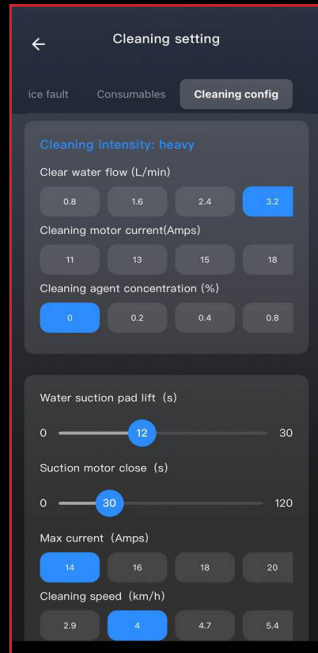
# Smart Cleaning

Convenient Phone App - Manage Fleet from your pocket

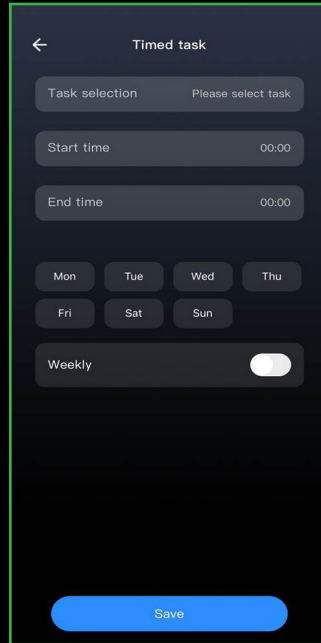
QR code for app >



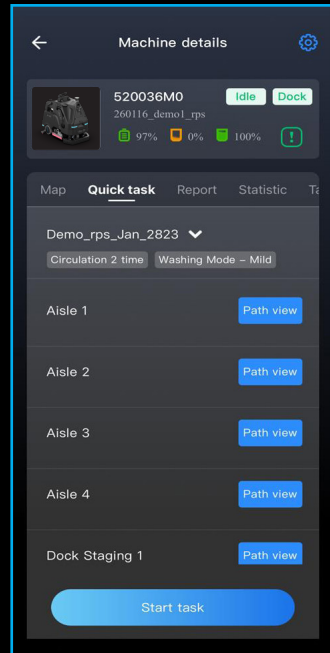
## Performance



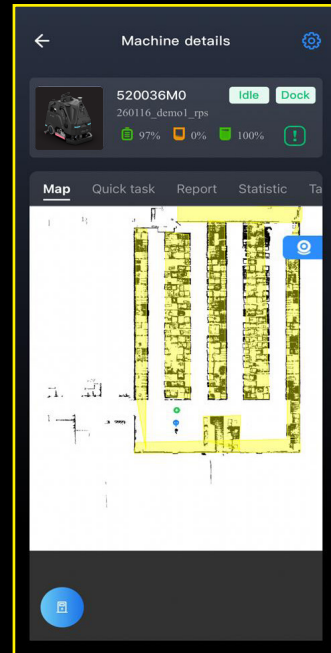
## Schedule



## Task Edits

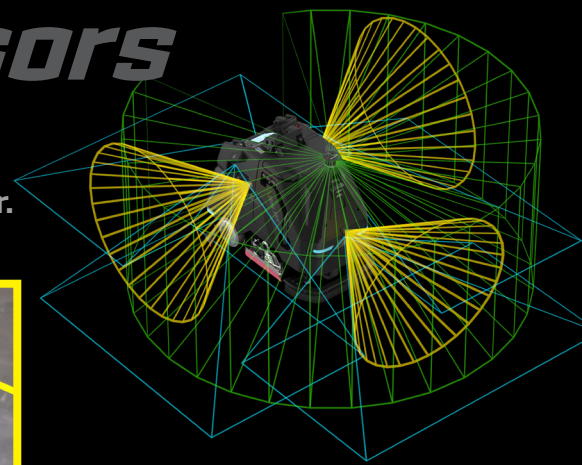


## Live Tracking

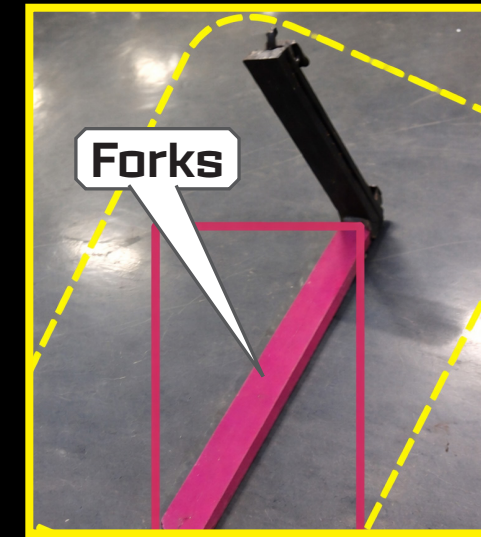
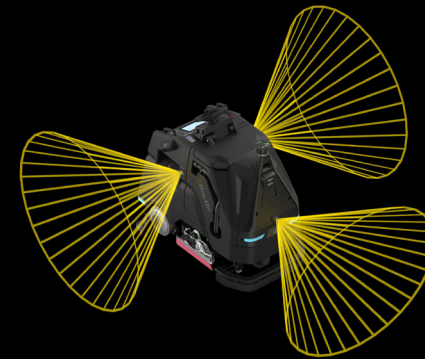


# Layered Array Sensors

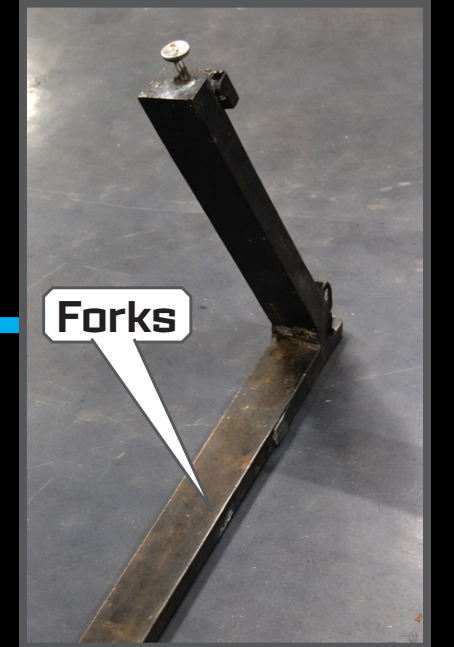
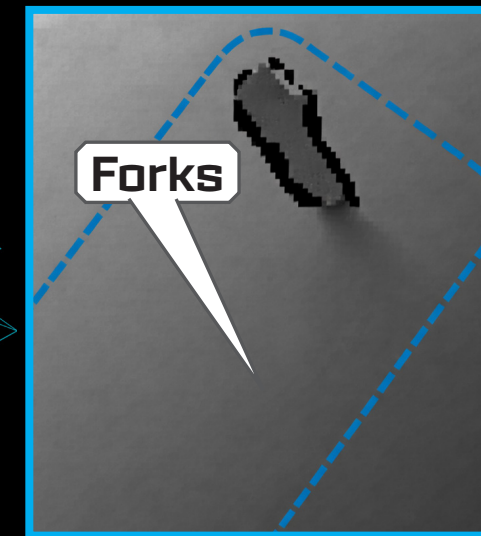
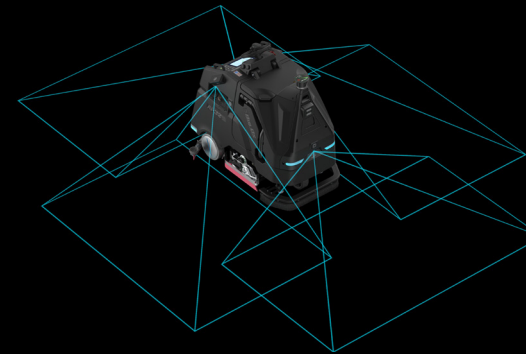
Ensure better coverage and object recognition for superior navigation. Fewer interruptions allow more cleaning per hour.



RGB-D Camera (3) image

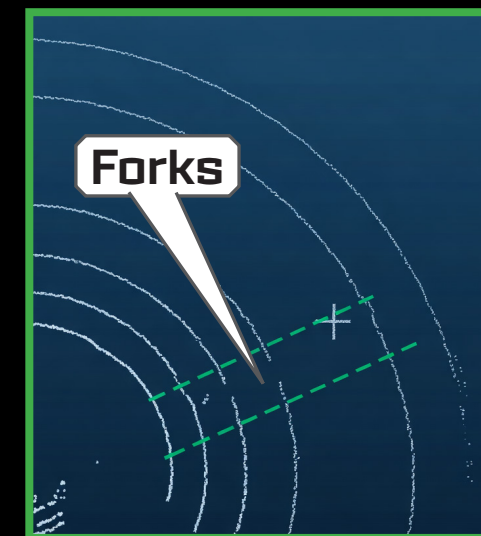
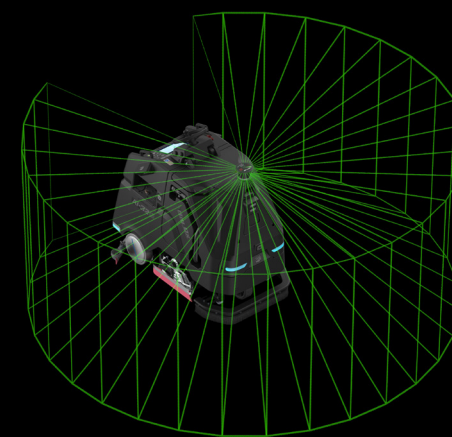


3D Camera (4) image



Actual Fork

3D Lidar image



## < Aisle Patterns

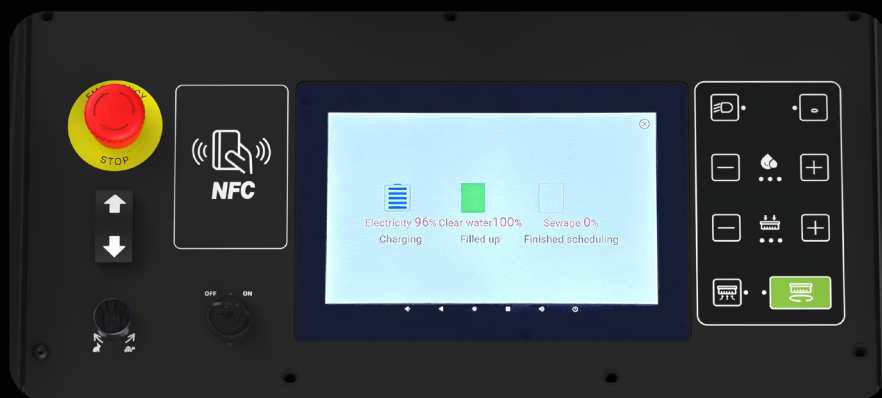
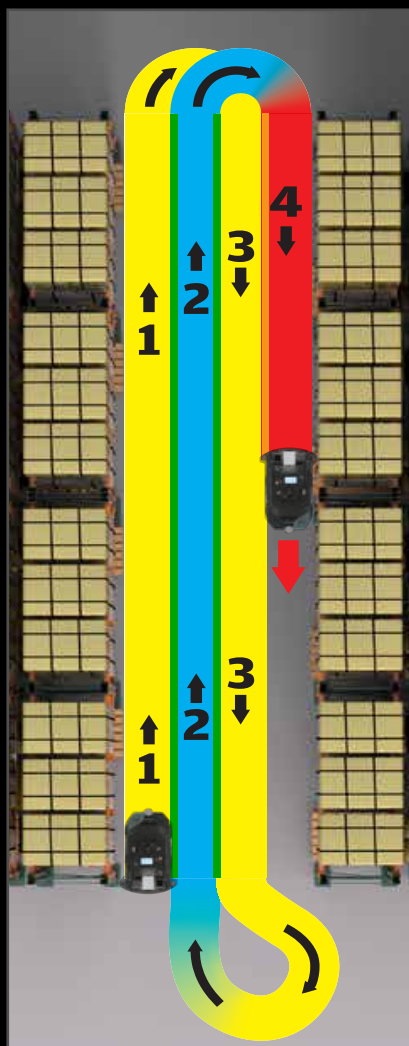
Ai Software learning improves coverage with limited turns, developing more efficient paths for the Ai-32.

## Lidar, Cameras, Action!

Powerful On-Board Controller

-Touch Screen for set up HMI

-Simple Membrane Panel for manual control.





## We Train & Certify Dealer Techs



Family owned since 1986



Factory Certified Tech Support Racine, WI (USA)



Parts & Tech support



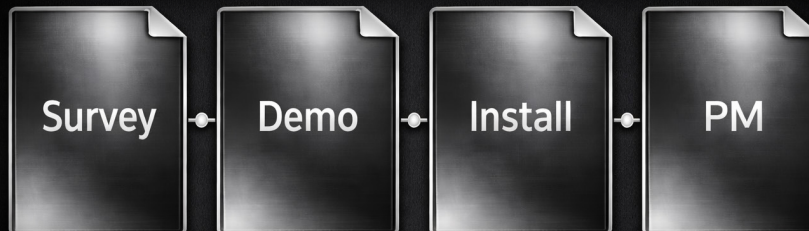
No AMR annual fees



Thorough process leads to long term satisfaction

# No Subscription \$/month

### We Provide Tools for Success



*Authorized Distributor*

**Contact Us:**

**262-833-1845**

**[www.bigoxclean.com](http://www.bigoxclean.com)**

**RPS Corporation**

**1711 South St,**

**Racine, WI 53404 USA**

