


## ROBOFORM 85

 Press Ctrl+P to Print

[NEXT PRODUCT](#)

### When Size Demands Performance



- Fast highly-adaptive generator
- Fixed table design for large workpieces
- Linear glass scales for max. position accuracy
- Easy-to-use control
- Power Control Expert
- Pilot Expert 3
- SPAC

#### Machine

X, Y, Z travel	in	31.5 x 23.6 x 19.7
Max. workpiece weight	lbs	9261
Max. electrode weight	lbs	771
Min./max. chuck to table distance	in	9.06/28.74

Positioning resolution	in	0.000020
Weight of installation without dielectric	lbs	13,744
Measuring device		Linear glass scale
Work area		
Type of work tank		Automatic up/down front door
Work tank dimensions W x D x H	in	61.4 x 44.5 x 23.62
Max. dielectric height min/max.	in	10.8/18.5
Max workpiece dimensions (width x depth x height)	in	61 x 43 x 17
Dielectric System		
Filtering system (paper cartridges)		8
Total reservoir capacity	gal	485
Generator		
Standard machining current	A	128

Pilot Expert 3: Optimization and automatic supervision of machining parameters

Standard

Power Control Expert: Machining current, self-adapting according to the electrode geometry

Standard

Micro-Machining: Mastery of electrode wear in applications of small dimensions

Standard

SPAC: System of protection against short circuits

Standard

### Numerical Control

Polishing Ra 0.1  $\mu\text{m}$  (CH0) / Contouring / M functions / Machine auto-diagnostic / DNC1 and DNC3 communication interface / Servo-controlled thermostabilization  $\pm 1^\circ$

Standard

Program-Expert 1.2: Automatic program generation and adjustment of the generator on the NC

Standard

Auto-restart

Standard

### Options

C axis	lbs·in <sup>2</sup>	Max. Inertia of electrode: 683
	°	Measurement resolution: 0.001

lbs

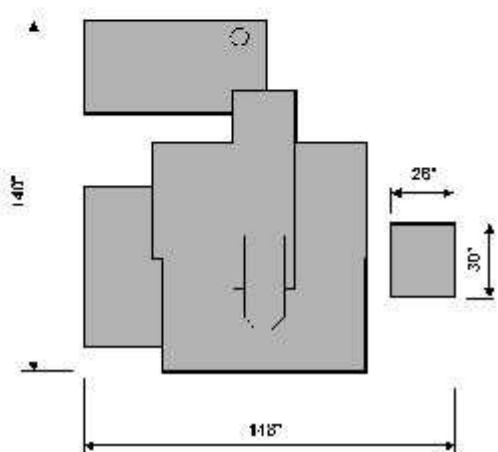
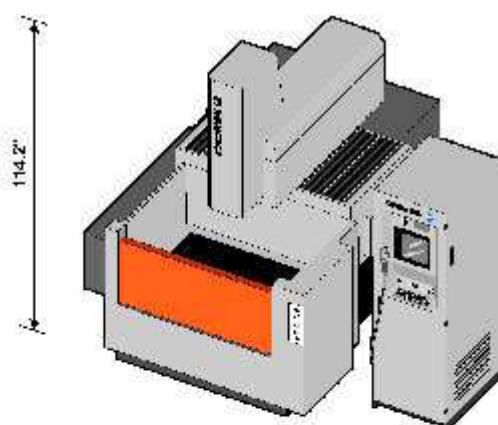
Electrode  
weight: 110

Spindle chucks

Erowa ITS  
and Erowa  
combi  
3R Macro  
and 3R  
Combi  
Hirschmann  
H8.11.7

Tool changer

7,24,48  
positions



The technical data are not binding. They are not warranted characteristics and are subject to change.

Please consult the General Sales Conditions of Charmilles Technologies USA.

last updated 3.26.02.

