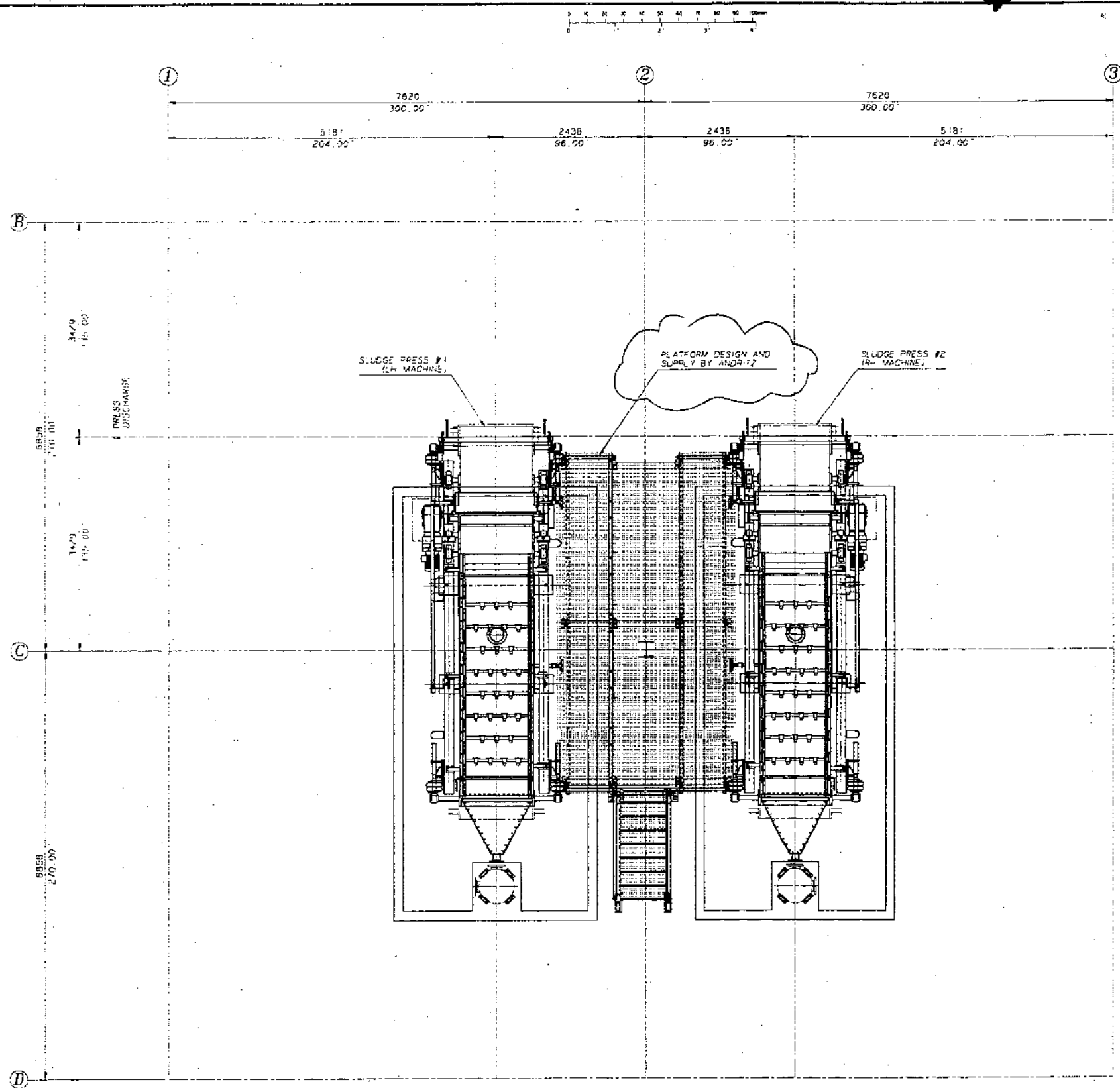


9.0 CERTIFIED MECHANICAL DRAWINGS

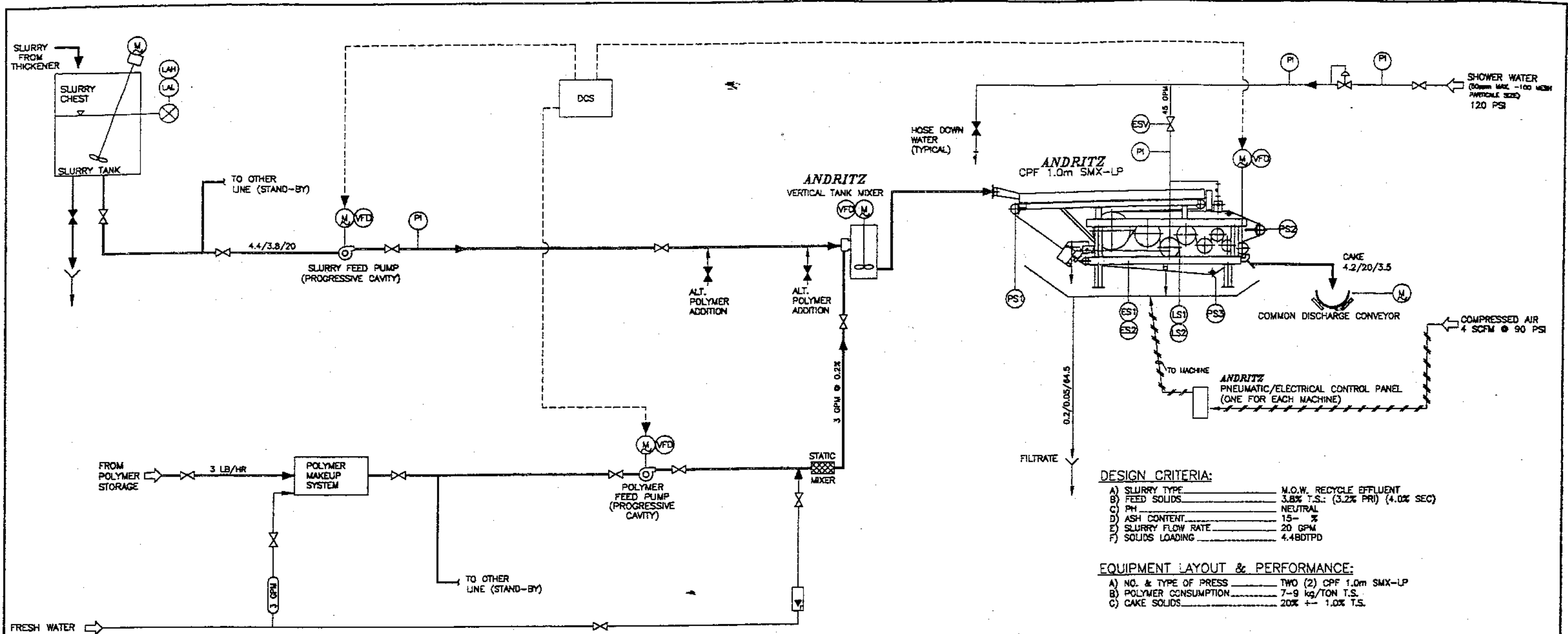


4010 COMMERCIAL BLVD. SOUTH ARLINGTON, TEXAS 76017 PHONE (817) 463-5611 FAX (817) 463-5612	
CERTIFIED CORRECT FOR INSTALLATION <i>S. L. Luter</i> DATE 8-30-93 PROJECT NO. 612-690	
THESE CHANGES REFLECT CUSTOMER'S CHANGES AND ANDRITZ, ON PROVIDED DURING SUBMITTALS	

THIS DRAWING IS NOT TO BE REPRODUCED OR COPIED IN ANY MANNER WITHOUT THE WRITTEN PERMISSION OF ANDRITZ. ANY REPRODUCTION OR COPIING OF THIS DRAWING WITHOUT THE WRITTEN PERMISSION OF ANDRITZ IS A VIOLATION OF THE COPYRIGHT LAWS OF THE UNITED STATES OF AMERICA AND MAY BE SUBJECT TO PROSECUTION.

END DRAWING ORIGINAL - DO NOT ALTER, REWORK

NO.	REVISION	BY	DATE
1	ISSUE	JD	8-22-93
4010 COMMERCIAL BLVD. SOUTH ARLINGTON, TEXAS 76017 PHONE (817) 463-5611			
CUSTOMER: PONDEROSA FIBRES C/P: 1, 0m SWS-50-LP		PROJECT NO. M612690-6	
TITLE: PLANT LAYOUT		SHEET NO. 0	



DESIGN CRITERIA:

A) SLURRY TYPE	M.O.W. RECYCLE EFFLUENT
B) FEED SOLIDS	3.8% T.S.: (3.2% PRI) (4.0% SEC)
C) PH	NEUTRAL
D) ASH CONTENT	15- %
E) SLURRY FLOW RATE	20 GPM
F) SOLIDS LOADING	4.4BDTPD

EQUIPMENT LAYOUT & PERFORMANCE:

A) NO. & TYPE OF PRESS	TWO (2) CPF 1.0m SMX-LP
B) POLYMER CONSUMPTION	7-9 kg/TON T.S.
C) CAKE SOLIDS	20% +/- 1.0% T.S.

NOTES:

1) FLOW INDEX (EXCEPT WHERE OTHERWISE NOTED) BDTPD / CONSISTENCY % / FLOW GPM.

LEGEND AND NOTES:

	PUMP	ESV - ELECTRONIC SOLENOID VALVE
	MOTOR	LIC - LEVEL INDICATING CONTROLLER
	TRANSMITTER	LAL - LEVEL ALARM LOW
	ROTAMETER	LAH - LEVEL ALARM HIGH
	NORMALLY OPEN	PI - PRESSURE INDICATOR
	NORMALLY CLOSED	SCR - DC DRIVE
	FLEXIBLE HOSE CONNECTION	VFD - VARIABLE FREQUENCY DRIVE
	PNEUMATIC LINES	

PONDEROSA FIBRES OF PENN. L.L.C.
NORTHAMPTON, PA.
CONTRACT No. 22024-10000-607-51
SLUDGE DEWATERING PLANT

0607.00-A01-30

1010 COMMERCIAL BLVD. SOUTH
ARLINGTON, TEXAS 76017
Phone: (817)485-5811
Telex: (817)472-8588

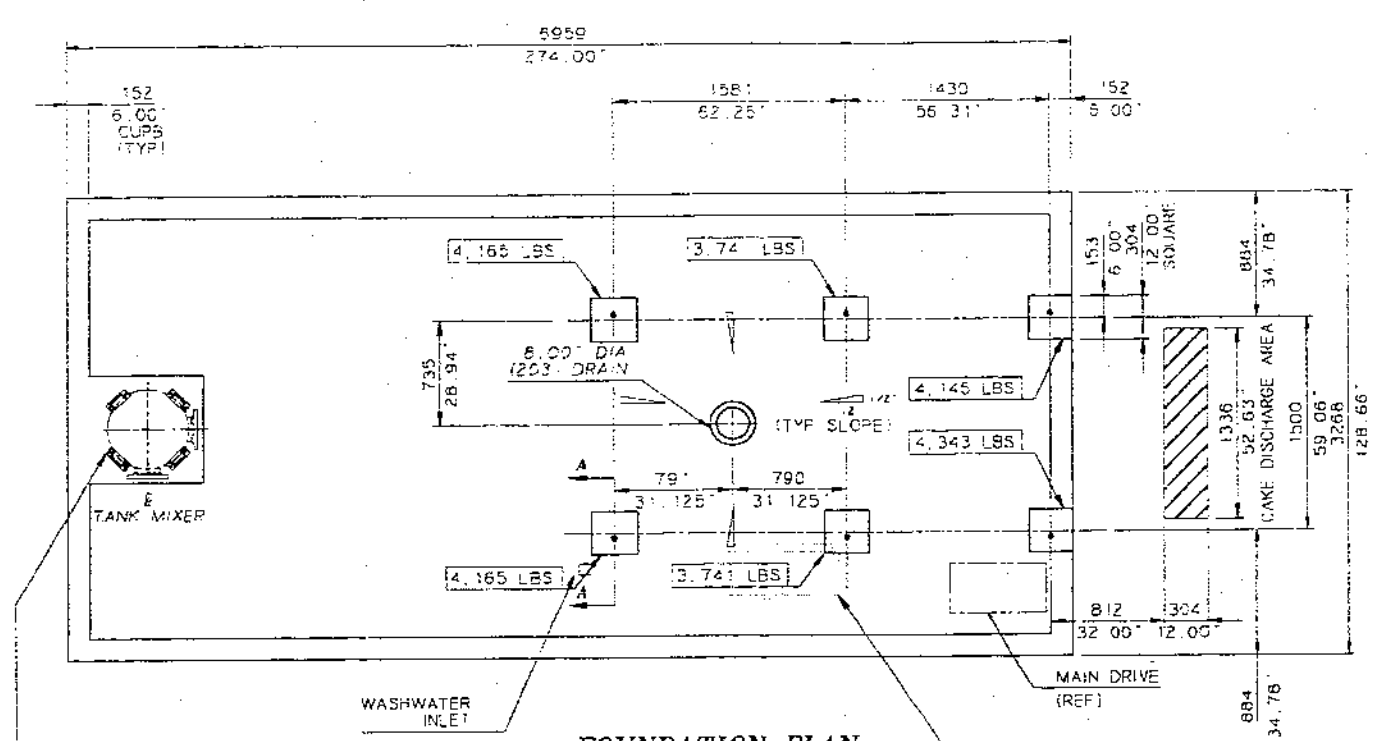
CERTIFIED CORRECT FOR INSTALLATION
BY: DATE: 6/28/95
PROJECT No. 612-690
THESE LINES REFLECT CUSTOMER'S CHANGES
AND APPROVAL ON PREVIOUS DWG. TRANSMITTALS

2	CERTIFIED & REVISED PER CUSTOMER REQUEST	DT	6/28/95
1	REVISED PER CUSTOMER REQUEST	DT	5/15/95
NO	REVISION	BY	DATE
Drawn by	MLX	Date	5/9/95
App. by	MLX	Date	5/11/95
Check by	MLX	Date	5/11/95
Scale	NONE		
Customer	PONDEROSA FIBRES	FS-690-2	
Project	RECOMMENDED FLOW DIAGRAM	FS-612690-2	2

1010 COMMERCIAL BLVD. SOUTH
ARLINGTON, TEXAS 76017
Phone: (817)485-5811

FS-612690-2
Drawing No.

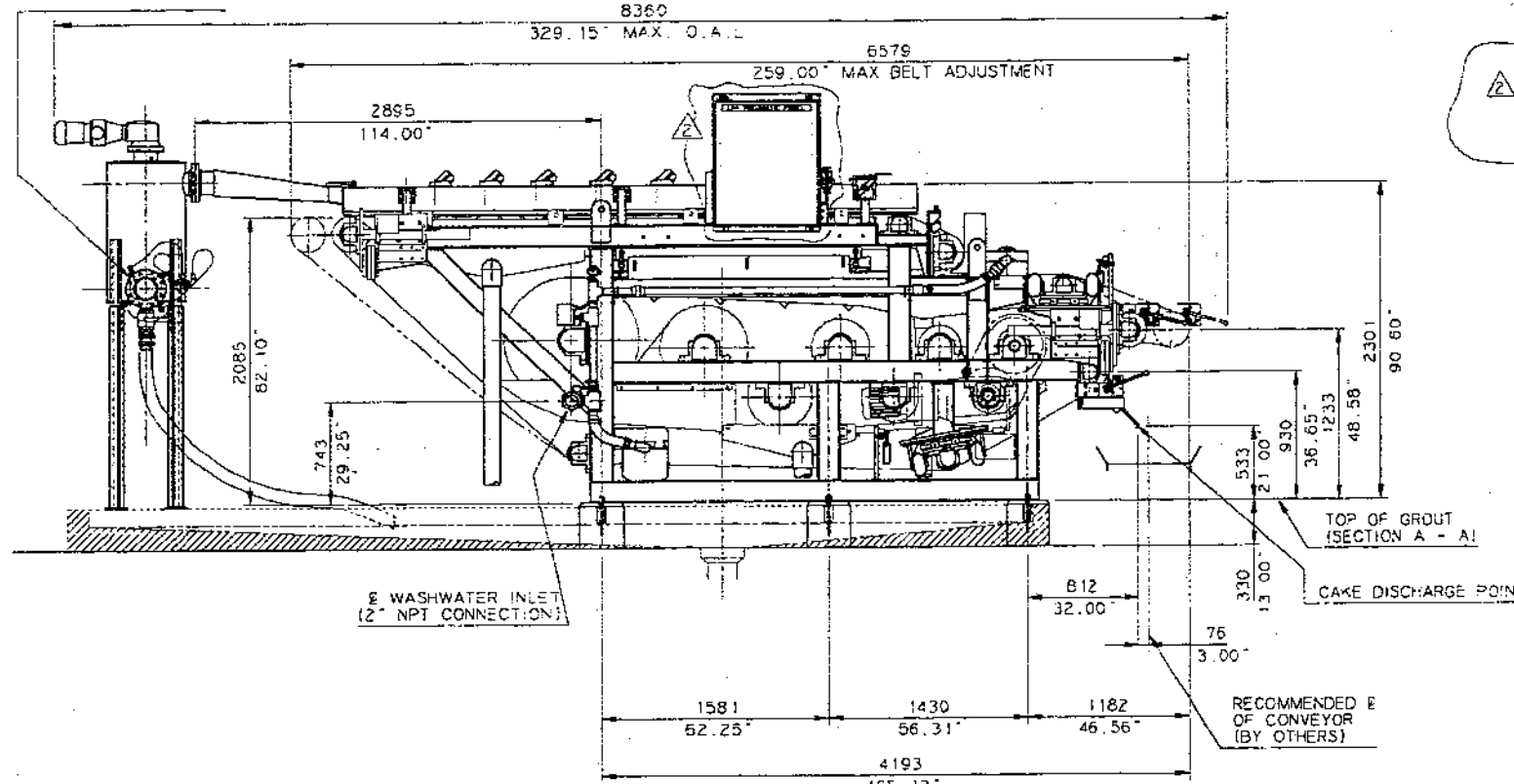
THIS DRAWING IS COPY RIGHTED
THE DRAWING IS A TRADE SECRET AND ONLY DISCLOSED TO THE RECIPIENT
FOR HIS PERSONAL USE. WITHOUT THE WRITTEN CONSENT OF ANDRITZ,
ARLINGTON, TEXAS, IT MAY NOT BE REPRODUCED OR USED IN ANY MANNER
INCLUDING COMPETITION, NOR MAY IT BE LOANED TO ANY OTHER PARTY.
ANY VIOLATION OF THESE TERMS WILL BE CONSIDERED A BREACH OF
CONTRACT AND WILL BE SUBJECT TO A CIVIL ACTION FOR DAMAGES.
ANDRITZ SHALL BE RESPONSIBLE FOR THE PROTECTION OF THIS DRAWING.



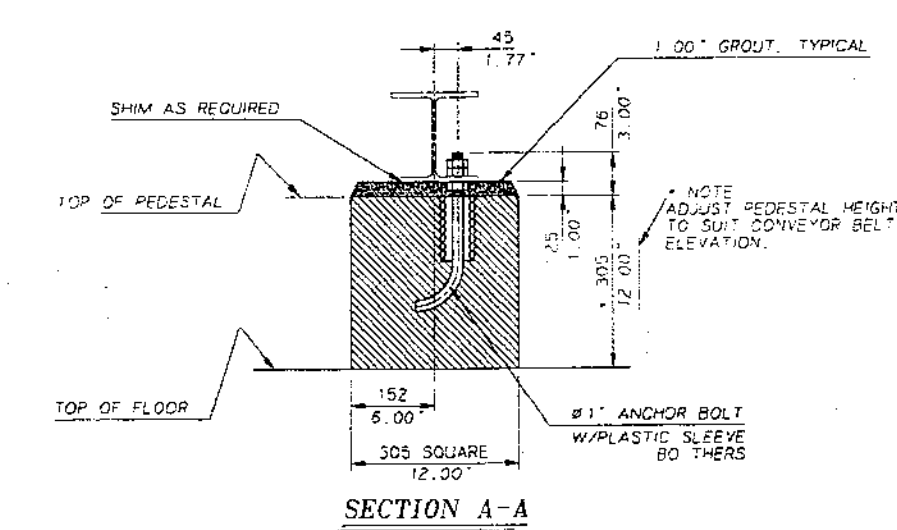
FOUNDATION PLAN

FOR FOUNDATION INFORMATION
SEE DWG DMA1657D

FEED INLET
(4\"/>

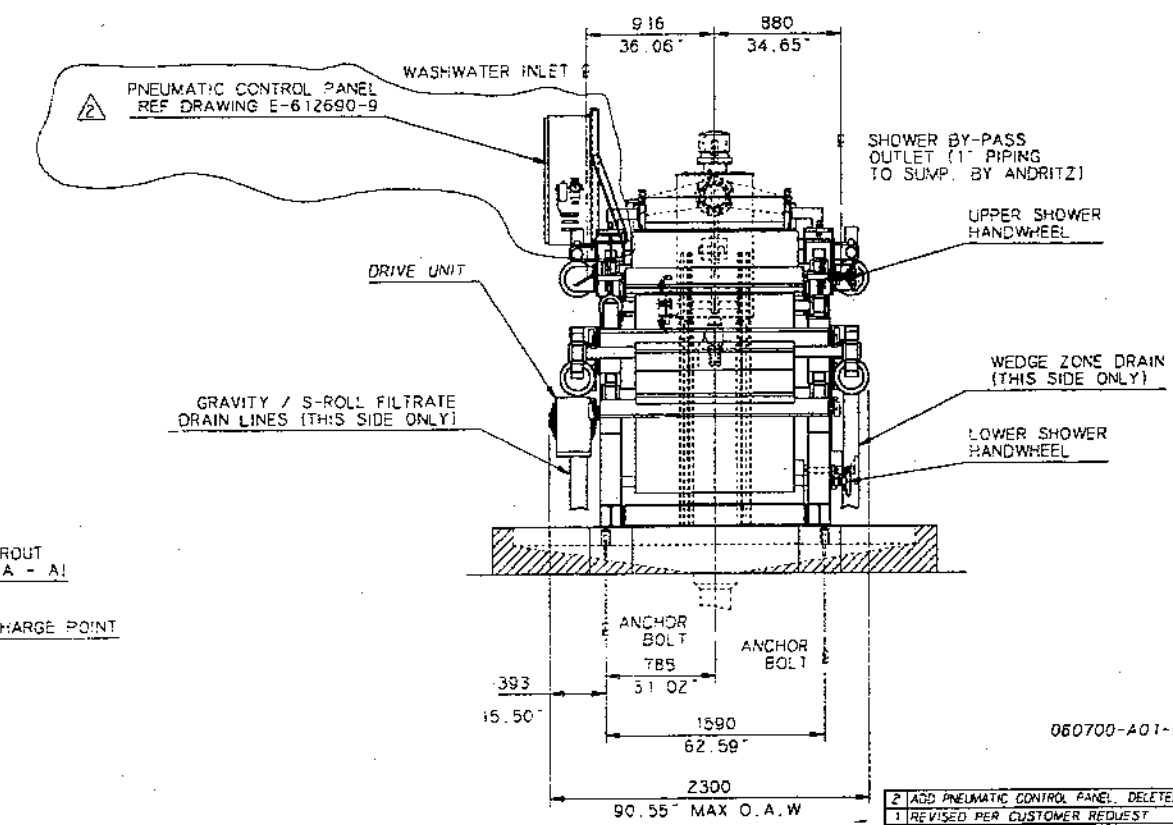
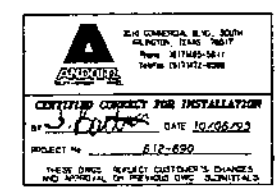


SIDE ELEVATION



SECTION A-A

- GENERAL NOTES & INFORMATION**
1. THE LOADINGS INDICATED INCLUDE VIBRATION EFFECTS.
 2. THE FOUNDATION DESIGN SHOWN INDICATES MINIMUM REQUIREMENTS FOR CLEARANCE AND DRAINAGE. ACTUAL FOUNDATION DESIGN AND CONSTRUCTION TO BE FURNISHED BY OTHERS.
 3. MINIMUM UTILITIES REQUIRED TO BE FURNISHED BY THE OPERATOR. THE FIGURES BELOW ARE FOR THE MACHINE ONLY. ANY ANCILLARY EQUIPMENT WILL REQUIRE ADDITIONAL UTILITIES.
 - a. AIR - FOUR (4) CUBIC FEET PER MINUTE OF CLEAN AIR @ 90 P.S.I.G.
 - b. WATER - 50 GALLONS PER MINUTE AT AMBIENT TEMPERATURE AND 120 PSIG
 4. DRY WEIGHT OF THE MACHINE: 21,300 LBS
WET WEIGHT: 24,300 LBS
 5. RIGHT HAND MACHINE - AS SHOWN
LEFT HAND MACHINE - OPPOSITE AS SHOWN
ONE MACHINE RIGHT HANDED
ONE MACHINE LEFT HANDED



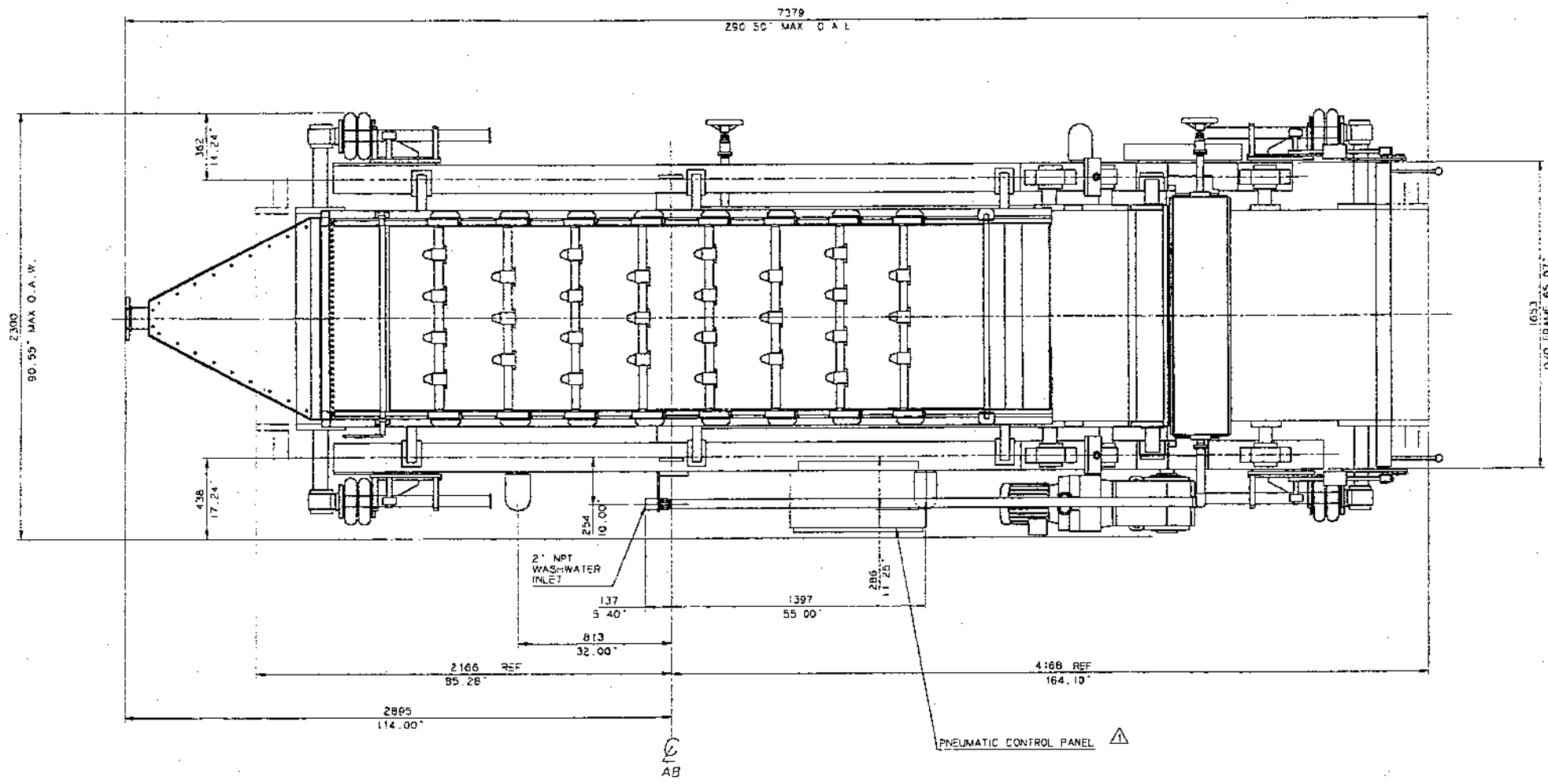
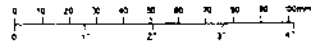
END ELEVATION

060700-A01-#13


2 ADD PNEUMATIC CONTROL PANEL, DELETED TERM BOX	SLH-10-06-95
1 REVISED PER CUSTOMER REQUEST	ARB 06-28-95
NO. 1	REVISION
BY: [Signature]	DATE
1010 COMMERCIAL BLVD. SOUTH ARLINGTON, TEXAS 76017 Phone (817) 465-5611	
Customer: PONDEROSA FIBRES	Rev. 1
DRW: 1.0m SMAX-50-EP	612-690
RH FOUNDATION PLAN	F612690-3
	2

THIS DRAWING IS COPY RIGHTED
FOR THE COMPANY. IT IS TO BE USED ONLY FOR THE PROJECT
SPECIFICALLY IDENTIFIED. NO PART OF THIS DRAWING IS TO BE
REPRODUCED OR TRANSMITTED IN ANY FORM OR BY ANY
MEANS, ELECTRONIC OR MECHANICAL, INCLUDING PHOTOCOPYING,
RECORDING, OR BY ANY INFORMATION STORAGE AND RETRIEVAL
SYSTEM, WITHOUT PERMISSION IN WRITING FROM THE COMPANY.
THE COMPANY ACCEPTS NO LIABILITY FOR ANY DAMAGE OR
LOSS OF PROFITS OR BUSINESS, OR ANY OTHER CONSEQUENCES
RESULTING FROM THE USE OF THIS DRAWING.

END DRAWING ORIGINAL - DO NOT ALTER HARD COPY

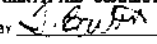


- NOTES:
- 1 ALL DIMENSIONS IN MILLIMETER WITH INCHES BELOW.
 - 2 RIGHT HAND MACHINE AS SHOWN
 - 3 LEFT HAND MACHINE AS SHOWN
 - 4 ONE MACHINE TO BE RIGHT HANDED
 - 5 AND ONE MACHINE TO BE LEFT HANDED.



1010 COMMERCIAL BLVD. SOUTH
ARLINGTON, TEXAS 76017
Phone: (817)465-5811
Telex: 1617472-0569

CERTIFIED CORRECT FOR INSTALLATION

BY  DATE: 10/05/95

PROJECT NO. 612-590

THESE DWGS REFLECT CUSTOMER'S CHANGES AND APPROVAL ON PREVIOUS DWG. SUBMITTALS

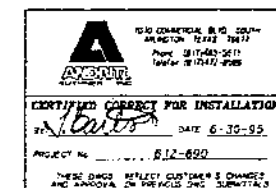
0607.00-001-#12

THIS DRAWING IS COPY RIGHTED
FOR THE PERSONS, USE OF THIS DRAWING WITHOUT WRITTEN PERMISSION OF ANDRITZ
IS PROHIBITED. ANY REPRODUCTION OF THIS DRAWING WITHOUT WRITTEN PERMISSION
OF ANDRITZ IS PROHIBITED. ANY REPRODUCTION OF THIS DRAWING WITHOUT WRITTEN
PERMISSION OF ANDRITZ IS PROHIBITED. ANY REPRODUCTION OF THIS DRAWING
WITHOUT WRITTEN PERMISSION OF ANDRITZ IS PROHIBITED.

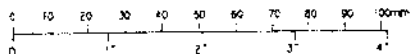
END DRAWING ORIGINAL - DO NOT ALTER HANDCOPY

1 ADDED PNEUMATIC CONTROL PANEL DELETED TERM BOX		SLH 10-06-95	
NO	REVISION	BY	DATE
1	1	1	12
1010 COMMERCIAL BLVD. SOUTH ARLINGTON, TEXAS 76017 Phone: (817)465-5811		Drawn Checked Coded Reviewed Approved Date	
PONDEROSA FIBRES		M612690-5	
CP 1.0m SMT-58-LP		Sheet No. 1	
RH PLAN VIEW		M612690-5	

- 1.0 FRAME ASSEMBLY
- 2.1 #914 (36") 1" ROLL ASSEMBLY
- 2.2 #610 (24") 1" ROLL ASSEMBLY
- 2.3 #457 (18") 1" ROLL ASSEMBLY
- 2.4 #406 (16") 1" ROLL ASSEMBLY
- 2.5 #356 (14") 1" ROLL ASSEMBLY
- 2.6 #305 (12") 1" ROLL ASSEMBLY
- 2.7 #254 (10") TENSIONING ROLL ASSEMBLY (2)
- 2.8 #234 (10") DEFLECTION ROLL ASSEMBLY (2)
- 2.9 #241 (9 1/2") DRIVE ROLL ASSEMBLY (1)
- 2.10 #241 (9 1/2") DRIVE ROLL ASSEMBLY (1)
- 2.11 #160 (6 1/2") TRACKING ROLL ASSEMBLY (2)
- 2.12 #152 (6") DEFLECTION ROLL ASSEMBLY (2)
- 3.1 GRAVITY ZONE BELT TENSIONING ASSEMBLY
- 3.2 LOWER FRAME BELT TENSIONING ASSEMBLY
- 4.0 BELT TRACKING DEVICE
- 5.0 GRAVITY ZONE FILTRATE PAN
- 6.0 WEDGE ZONE FILTRATE PAN
- 7.0 S-ZONE FILTRATE PAN
- 8.0 UPPER SHOWER ASSEMBLY
- 9.0 LOWER SHOWER ASSEMBLY
- 10.0 TENSION ROLL CHUTE ASSEMBLY
- 11.0 UPPER DOCTOR ASSEMBLY
- 12.0 LOWER DOCTOR ASSEMBLY
- 13.0 DRIVE ASSEMBLY
- 14.0 HEADBOX ASSEMBLY
- 15.0 DISTRIBUTION CHUTE
- 16.0 DISCHARGE CHUTE ASSEMBLY
- 17.0 PLOW CHICANE ASSEMBLY (8 ROWS)
- 18.0 SLUDGE LEVELER
- 19.0 SPLASH GUARD
- 20.0 GRAVITY ZONE GRID ASSEMBLY
- 21.0 WEDGE ZONE GRID ASSEMBLY
- 22.0 FLOATING WEDGE
- 27.0 GRAVITY ZONE FILTRATE DRAIN (ON BOTH SIDES)
- 28.0 WEDGE ZONE FILTRATE DRAIN (ON FAR SIDE)
- 29.0 S-ZONE FILTRATE DRAIN (ON NEAR SIDE)
- 30.0 SHOWER INLET PIPING
- 31.0 UPPER SHOWER DRAIN (NOT SHOWN)
- 32.0 LOWER SHOWER DRAIN (NOT SHOWN)
- 33.0 UPPER SHOWER BACKWASH PIPING (FAR SIDE)
- 34.0 LOWER SHOWER BACKWASH PIPING (FAR SIDE)
- 35.0 PNEUMATIC MANIFOLD
- 37.0 E-STOP SWITCH (BOTH SIDES)
- 37.2 ELECTRICAL TERMINAL BOX
- 40.0 TOP BELT
- 40.2 BOTTOM BELT

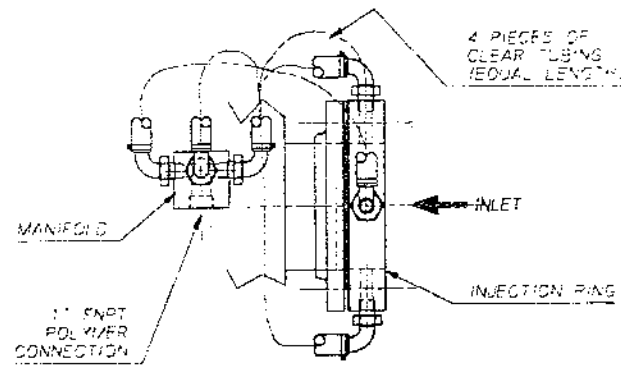


* DRAIN PIPE LENGTHS TO BE DETERMINED AT JOBSITE. (SEE INSTRUCTIONS PROVIDED IN PVC SOLVENT AND PRIMER CONTAINER). SUPPORT BRACING TO BE PROVIDED BY OTHERS. 3 PLACES.

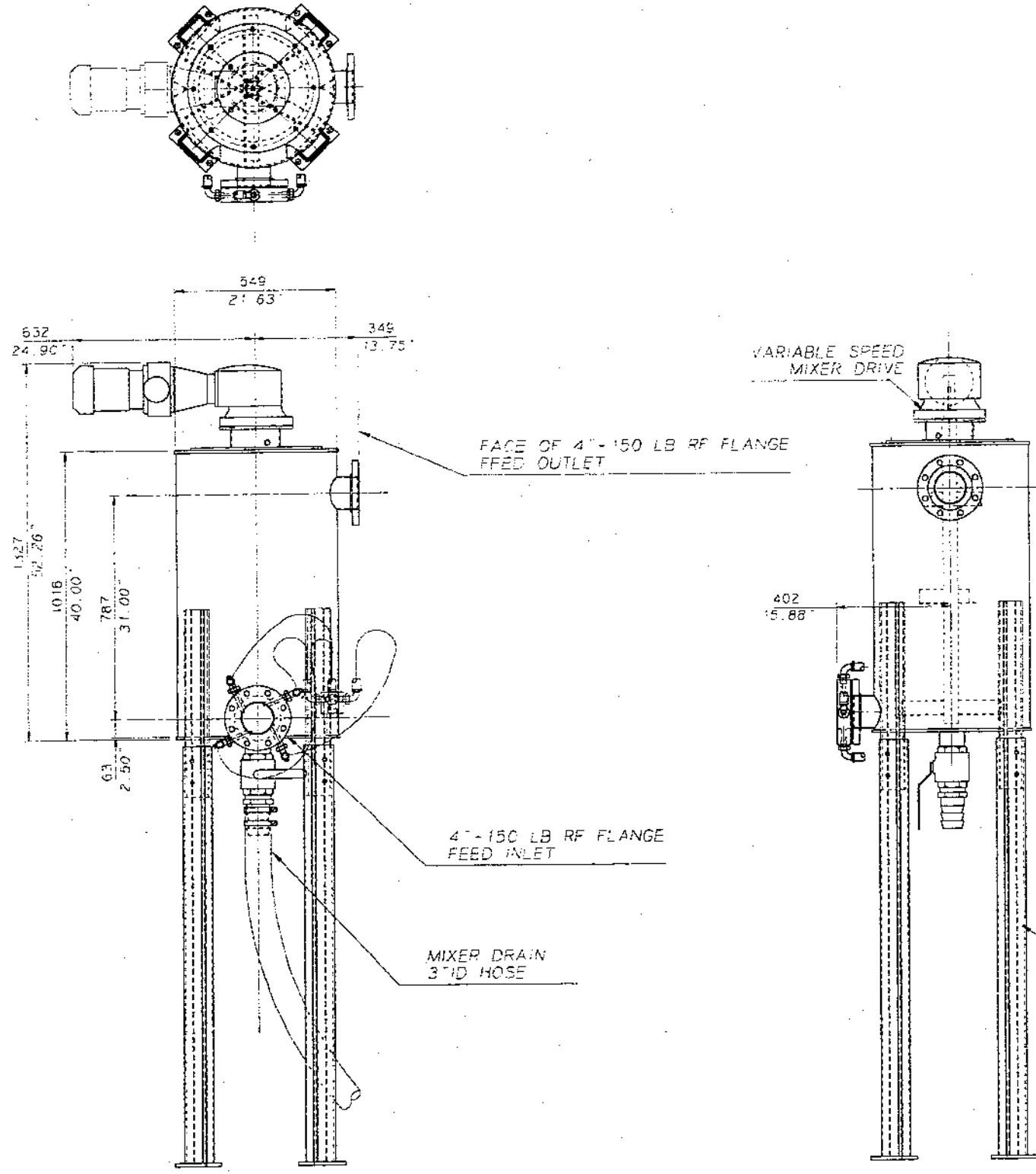


GENERAL NOTES & INFORMATION

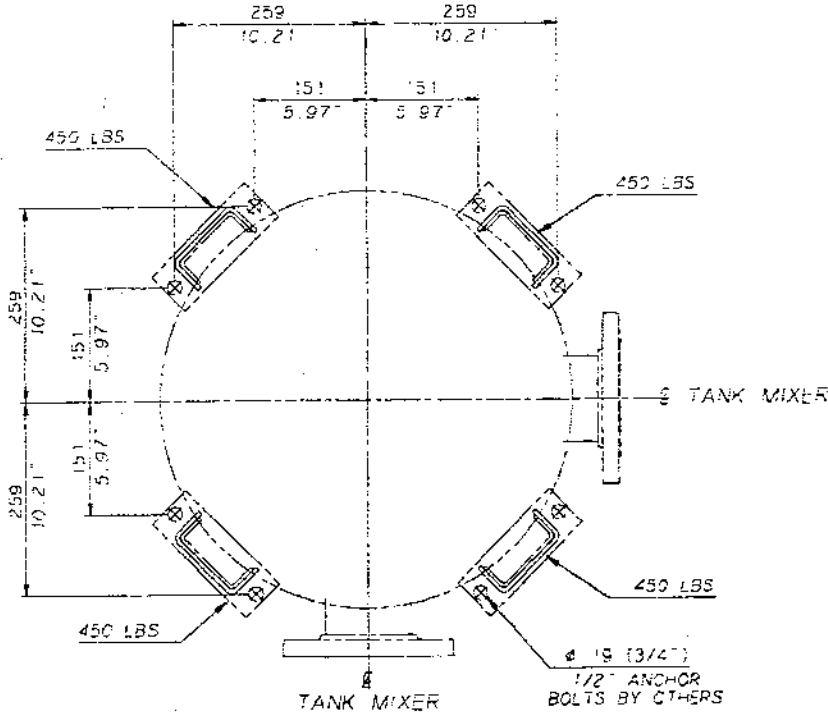
- 1. THE LOADINGS INDICATED INCLUDE VIBRATION EFFECTS
- 2. THE FOUNDATION DESIGN SHOWN INDICATES MINIMUM REQUIREMENTS FOR CLEARANCE AND DRAINAGE. ACTUAL FOUNDATION DESIGN AND CONSTRUCTION TO BE FURNISHED BY OTHERS
- 3. MINIMUM UTILITIES REQUIRED TO BE FURNISHED BY THE OPERATOR FOR THE MACHINE ONLY. ANY ANCILLARY EQUIPMENT WILL REQUIRE ADDITIONAL UTILITIES.
- 4. DRY WEIGHT OF THE MIXER: 1350 LBS
WET WEIGHT: 1800 LBS
- 5. RIGHT HAND AS SHOWN.
LEFT HAND OPPOSITE AS SHOWN.
ONE MIXER RIGHT HANDED AND
ONE MIXER LEFT HANDED



SIDE VIEW
INLET FLANGE



SIDE ELEVATION



FOUNDATION PLAN

SCALE 1" = 5'

0607 00-A01-#14

THIS DRAWING IS COPYRIGHTED
FOR THE DESIGN AND INVENTION OF THE DESIGNER. NO PART OF THIS DRAWING IS TO BE REPRODUCED OR TRANSMITTED IN ANY FORM OR BY ANY MEANS, ELECTRONIC OR MECHANICAL, INCLUDING PHOTOCOPYING, RECORDING, OR BY ANY INFORMATION STORAGE AND RETRIEVAL SYSTEM, WITHOUT PERMISSION IN WRITING FROM THE DESIGNER.

1010 COMMERCIAL BLVD. SOUTH
ARLINGTON, TEXAS 76017
Phone: (817) 465-5611
Fax: (817) 465-5611

CERTIFIED CORRECT FOR INSTALLATION

BY: *[Signature]* DATE: 6-30-95

PROJECT No. 612-690

THESE DIMS. REFLECT CUSTOMER'S CHANGES
AND APPROVAL ON PREVIOUS DIMS. SUBMITTALS

REVISED PER CUSTOMER REQUEST		SE-08-09-95
NO	REVISION	BY DATE
1	1	1
1010 COMMERCIAL BLVD. SOUTH ARLINGTON, TEXAS 76017 Phone: (817) 465-5611		FILE
CAD		FILE
Customer: DMA 1657D		File name: DMA 1657D
4" INLET / 50 GAL. VERTICAL TANK MIXER ASSEMBLY		Rev: 1
DMA 1657D		