

Main Features

- Compact and closed design
- Features special multi-layer stainless steel wire
- Several mesh sizes available depending on application
- Stock consistencies from 0.01 to approx. 3%, no thickening of fractions, thus no post dilution required
- Feed flow rates of 500 – 30,000 l/min
- Quick ROI
- Almost maintenance free operation

Applications

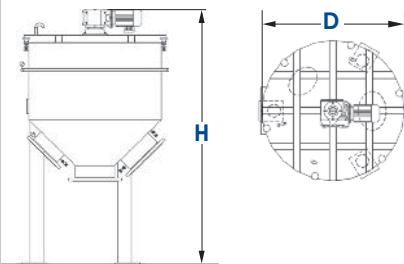
- Scalping of fiber suspensions in the paper industry into coarse fraction (fibers) and fine fraction (filler, ash, fines etc.)
- Deashing, reduction of fines and fillers
- Reduction of fiber loss by fiber recovery from press filtrates, washer filtrates and other fiber containing filtrates
- Fine filtration, e.g. preparation of shower water


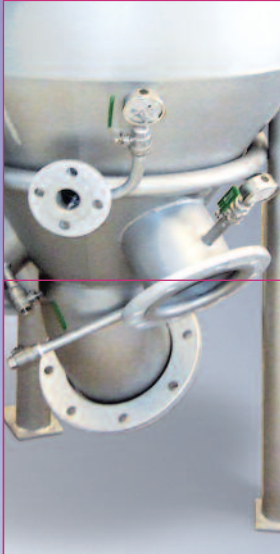
- Upgrade of white water treatment: combination of saveall and water clarification
- Recovery of fibers from sludge

Technical Data

Model	Max. Feed Flow l/min	Max. Diameter D [mm]	Max. Height H [mm]	Shower Water [lpm]	Power kW
5*	500	880	1546	30	0.25
10*	1000	880	1546	30	0.25
20	2000	880	1546	30	0.25
30*	3000	1180	2159	64	0.37
45	4500	1180	2159	64	0.37
50*	5000	1670	2550	72	0.55
60	6000	1180	2159	64	0.37
75*	7500	2000	2914	110	0.55
100	10000	2000	2914	110	0.55
150	15000	2000	2914	110	0.55
165*	16500	2400	3945	230	1.1
220	22000	2400	3945	230	1.1
300	30000	2400	3945	230	1.1

*Also available for higher feed consistencies. Special sizes available as required, depending on application.






water machines

CONUSTRENNER

Note: All product-related data and information in this publication shall serve for information purposes only. They shall not be interpreted or intended to represent any kind of warranty or guarantee. The only legally binding statements are those contained solely within our quotations. Errors and omissions excepted. Technical data are subject to change.




A Company of Voith Paper

www.meri.de

Merl Environmental Solutions GmbH
Levelingstr. 18
D-81673 Munich
Germany
Phone +49 700 callmeri
(+49 700 2255 6374)
info@meri.de

Voith Merl Environmental Solutions, Inc.
2620 E. Glendale Avenue
P.O. Box 1262
Appleton WI 54912-1262
USA
Phone +1 920 734-8485
info@meriusa.com

Merl Sistemas e Tecnologia Ltda.
R. Friedrich von Voith, 825
São Paulo - SP - 02995-000
Brazil
Phone +55 11 3944-6644
meribrasil@meribrasil.com.br



CONUSTRENNER

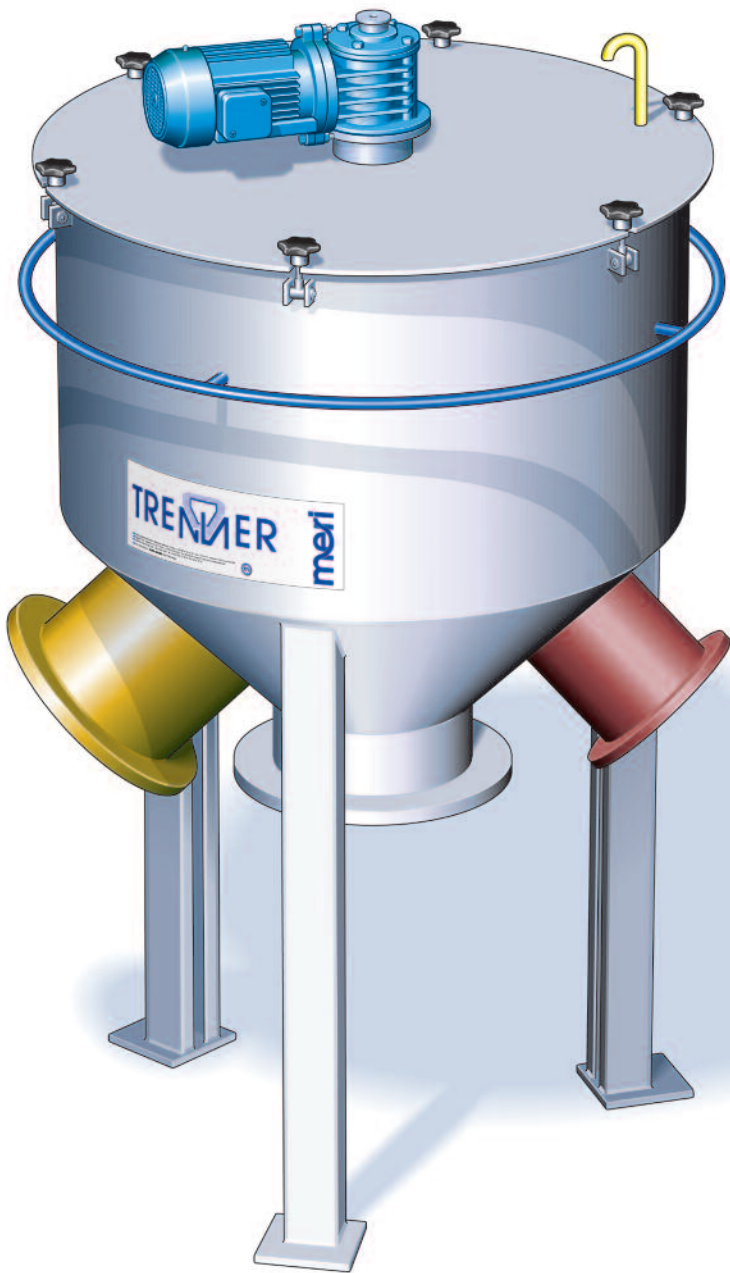
The CONUSTRENNER represents the next generation of spray filtration equipment. The machine utilizes multi layer stainless steel wire for high accurate separation of fibers. The CONUSTRENNER is excellent for fiber scalping of suspensions in applications such as white water from paper machines, thickeners or washers. It features an extremely compact design, high reliability and moderate investment cost.

Operation Principle



- The CONUSTRENNER is completely enclosed and operates continuously
- The machine body is characterized by three co-axial conical shaped chambers
- The untreated suspension is fed into the inner feed cone
- There, the feed spray nozzles are arranged over the entire cone surface and spray onto the conical rotating wire basket
- Particles bigger than wire opening are collected in the intermediate cone as coarse fraction
- Finer particles passing through the wire are discharged from the outer cone fine fraction
- A continuous backwashing system ensures the effective cleanliness of the wire

Machine Elements

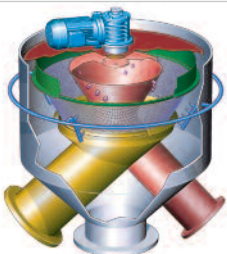


Design Concept



Multilayer Wire

- The CONUSTRENNER features a specially developed, conical wire basket with the new Triple Layer Wires (3LW) or Twin Layer Wires (2LW), a configuration of multiple stainless steel wires
- Unlike other devices using nylon or single layer fabrics, its wire configuration performs well under the feed pressure
- Depending on the application, special individual wire configurations are available to minimize fiber loss and recover valuable fiber
- For the fine filtration application, the proper choice of the mesh size ensures that particles in the fine fraction (filtrate) do not exceed a certain size
- 3LW guarantees a maximum separation efficiency for fine filtration and fiber scalping



- Mesh sizes range between 40 – 450 µm (38 – 625 mesh)
- The CONUSTRENNER does not thicken so both fractions can be fed instantly back into the process without requiring further dilution

Backwashing

- The wire basket is cleaned by one or more outer shower pipes with multiple nozzles

Quick Access System

- The essential parts of the CONUSTRENNER (wire basket and shower nozzles) are accessible by the quick release bolts at the top of the machine

Pilot Unit

- Portable pilot units are available in order to test on-site and study special applications

On-Site



Installation

- Equipment delivered pre-assembled for minimized erection work

Servicing

- Simple design with only one moving part and no gaskets
- Easy accessibility and nearly maintenance free operation