

# T-DRILL

PRODUCTIVITY AS A PRODUCT.

**NEW!** Industry 4.0 ready



## COLLARING MACHINE

Tube branching center for fast T-fitting manufacturing

**TBC-115**

## TBC-115 TUBE BRANCHING CENTER

Completely new Tube Branching Center for fastest T-DRILL T-fitting manufacturing ever, up to 160 T-fittings per hour.

TBC-115 has a turntable with three machining units, which allow the three steps of the process to be done simultaneously:

1. Pilot hole milling
2. Collaring
3. Trimming

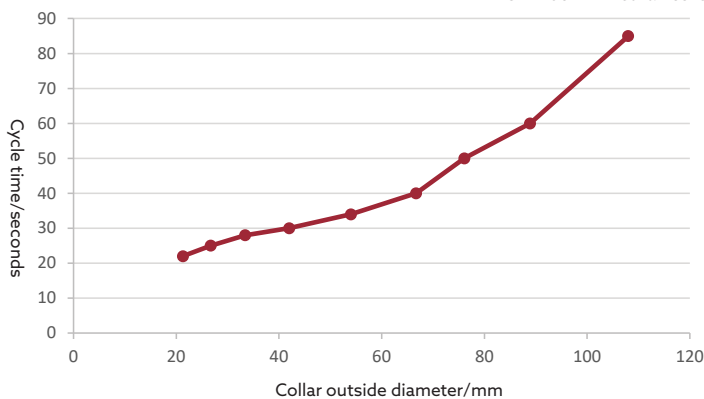
Automatic adjustment of collaring tools according to collar size within the adjustment range of each collaring head. Emulsion lubrication for the milling and trimming process results in a clean tube without chips stuck to it. TBC-115 is Industry 4.0 and online cloud system TD-Vault ready.



## Cycle time/seconds

Stainless steel tubes, 2 mm wall thickness

- OD 21.3 mm collar 22 s
- OD 54 mm collar 34 s
- OD 108 mm collar 85 s



## DO IT WITH T-DRILL

MANUFACTURER:

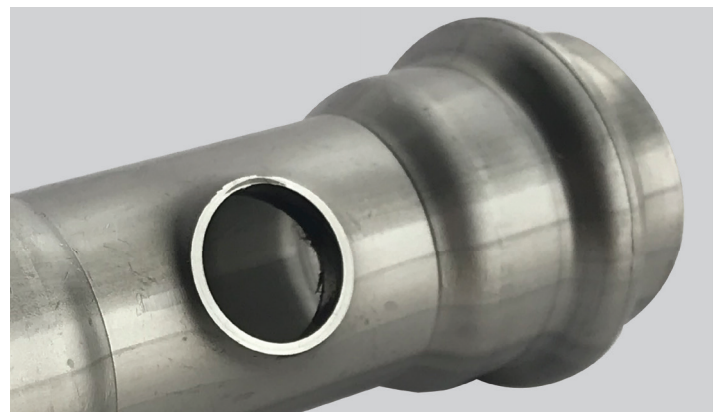
# T-DRILL

T-DRILL OY  
 Ampujantie 32  
 66400 Laihia, FINLAND  
 Tel. +358 6 475 3333  
 sales@t-drill.fi  
 www.t-drill.com

T-DRILL Industries Inc.  
 1740 Corporate Drive,  
 Suite #820, Norcross,  
 Georgia 30093 USA  
 Tel. +1-770-925-0520,  
 sales@t-drill.com  
 www.t-drill.com

## Capacity | Max. wall thicknesses

		Collar outside diameter										
		Mild Steel & Stainless Steel										
mm inch Ø	17 mm NS 3/8"	19,05 3/4"	21,3 1/2"	26,9 3/4"	33,7 1"	42,4 1 1/4"	48,3 1 1/2"	60,3 2"	76,1 2 3/4"	88,9 3"	114,3 4"	
Run tube outside diameter	21,3 1/2"	1,5 0.059	1,5 0.059	2,0 0.079	—	—	—	—	—	—	—	
	26,9 NS 3/4"	1,5 0.059	1,5 0.059	1,5 0.059	2,6 0.102	—	—	—	—	—	—	
	33,7 1"	1,5 0.059	1,5 0.059	2,0 0.079	2,6 0.102	2,6 0.102	—	—	—	—	—	
	42,4 1 1/4"	1,5 0.059	1,5 0.059	2,0 0.079	2,6 0.102	2,9 0.114	2,9 0.114	—	—	—	—	
	48,3 1 1/2"	1,5 0.059	1,5 0.059	2,0 0.079	2,6 0.102	2,9 0.114	2,9 0.114	2,9 0.114	—	—	—	
	60,3 2"	1,5 0.059	1,5 0.059	2,0 0.079	2,9 0.114	2,9 0.114	2,9 0.114	3,05 0.120	3,05 0.120	—	—	
	76,1 2 3/4"	1,5 0.059	1,5 0.059	2,0 0.079	2,9 0.114	2,9 0.114	3,05 0.120	3,05 0.120	3,05 0.120	3,05 0.120	—	
	88,9 3"	1,5 0.059	1,5 0.059	2,0 0.079	3,05 0.120	3,05 0.120	3,05 0.120	3,05 0.120	3,05 0.120	3,05 0.120	3,05 0.120	
	114,3 4"	1,5 0.059	1,5 0.059	2,0 0.079	3,05 0.120	3,05 0.120	3,05 0.120	3,05 0.120	3,05 0.120	3,05 0.120	3,05 0.120	2,0 0.079



## Technical data

TBC-115	
Collar sizes	17 - 114.3 mm ( 3/8" - 4")
Run tube sizes	21,3 - 114,3 mm (1/2" - 4")
Rated power	15 kW

The information included in this brochure is subject to revision without notice.

Cut costs – Improve quality – Increase profit

REPRESENTED BY: