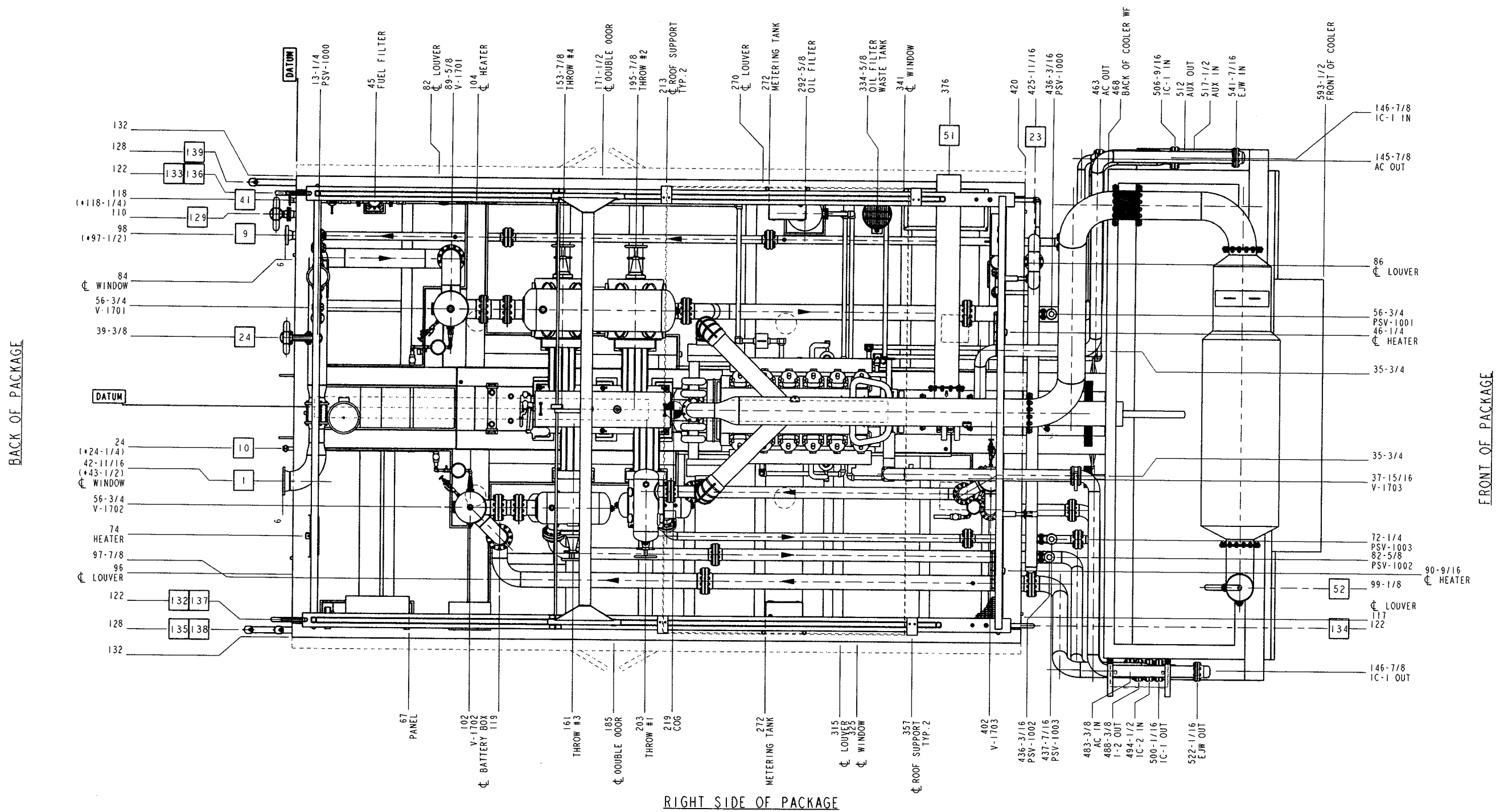


LEFT SIDE OF PACKAGE



BACK OF PACKAGE

FRONT OF PACKAGE

RIGHT SIDE OF PACKAGE

GENERAL NOTES

- IT IS UC'S RECOMMENDATION THAT ANY PRE-SPOOLING TO THIS COMPRESSOR PACKAGE CONTAIN FIELD WELDS AT ALL CUSTOMER CONNECTIONS
- ALL PIPING MUST BE SELF SUPPORTING BEYOND THIS COMPRESSOR PACKAGE
- ALL DIMENSIONS ARE IN INCHES (UNLESS OTHERWISE SPECIFIED).
- DIMENSIONS IN "BOLD PRINT" DENOTE REFERENCE DIMENSIONS.
- DO NOT SCALE THIS DRAWING FOR CONSTRUCTION PURPOSES
- PRIMER: H/R
- PAINT: PACKAGE - (1) COAT UC STANDARD HIGH-SOLIDS EPOXY - DESERT TAN GRATING - (2) COATS MACHINE ENAMEL - BLACK
- ☉ DENOTES CENTER OF GRAVITY
- DENOTES AS-BUILT DIMENSION.

CUSTOMER CONNECTIONS			CUSTOMER CONNECTIONS			ESTIMATED WEIGHTS		
TAG	DESCRIPTION	SIZE	TAG	DESCRIPTION	SIZE	DESCRIPTION	SHIPPING ARRANGEMENT	WEIGHT (lb)
1	STAGE ONE INLET	10" 150# RF	134	GLYCOL TANK VENT	2" MITRE	COMPRESSOR	MOUNTED	20200
9	FINAL DISCHARGE	4" 600# RF	135	GLYCOL TANK PUMP-OUT	3" CAMLOCK	DRIVER	MOUNTED	22750
10	SCRUDDER DRAIN HEADER	1-1/2" NPT	136	LUBE OIL DAY TANK VENT (ENG./COMP. CRANKCASE)	1" MITRE	COOLER	S LOOSE	21050
23	PSV VENT HEADER	6" MITRE	137	LUBE OIL DAY TANK VENT (COMP. LUBRICATOR)	1" MITRE	SKID	MOUNTED	42000
24	SUCTION PSV	3" MITRE	138	PACKING VENT & DRAIN TANK PUMP-OUT	3" CAMLOCK	VESSEL	MOUNTED	8500
41	FUEL GAS SUPPLY	2" 150# RF	139	WASTE OIL TANK PUMP-OUT	3" CAMLOCK	EXHAUST SYSTEM	MOUNTED/S. LOOSE	8000
51	ENGINE AIR INTAKE	14" Ø	144	ENGINE JACKET WATER BLEED	3/8" NPTF	MISC	MOUNTED/S. LOOSE	20000
52	ENGINE EXHAUST	16" Ø STACK	145	ENGINE AUXILIARY WATER BLEED	3/8" NPTF	CRANE	MOUNTED	1700
123	LUBE OIL DAY TANK FILL (ENG./COMP. CRANKCASE)	3/4" NPT	151	ENGINE AUXILIARY/JACKET WATER LOCAL FILL	3/4" NPTF	BUILDING	MOUNTED	8000
124	LUBE OIL DAY TANK FILL (COMP. LUBRICATOR)	3/4" NPT				TOTAL APPROX. SHIPPING WEIGHT		138000
126	ENGINE JACKET WATER FILL (SURGE)	2" 78 FR. CAP				TOTAL APPROX. WEIGHT OF ALL EQUIPMENT		167200
127	ENGINE AUXILIARY WATER FILL (SURGE)	2" 78 FR. CAP						
129	START GAS EXHAUST	3" 150# RF						
130	COMPRESSOR CRANKCASE VENT	2" MITRE						
132	PACKING VENT & DRAIN TANK VENT	2" MITRE						
133	WASTE OIL TANK VENT	2" MITRE						

STAMP AREA

THIS DOCUMENT IS SUPPLIED IN CONFIDENCE. REPRODUCTION OR DISTRIBUTION IN WHOLE OR IN PART WITHOUT THE WRITTEN PERMISSION OF UNIVERSAL COMPRESSION IS STRICTLY PROHIBITED.

REV 2 CE 371 AS-BUILT

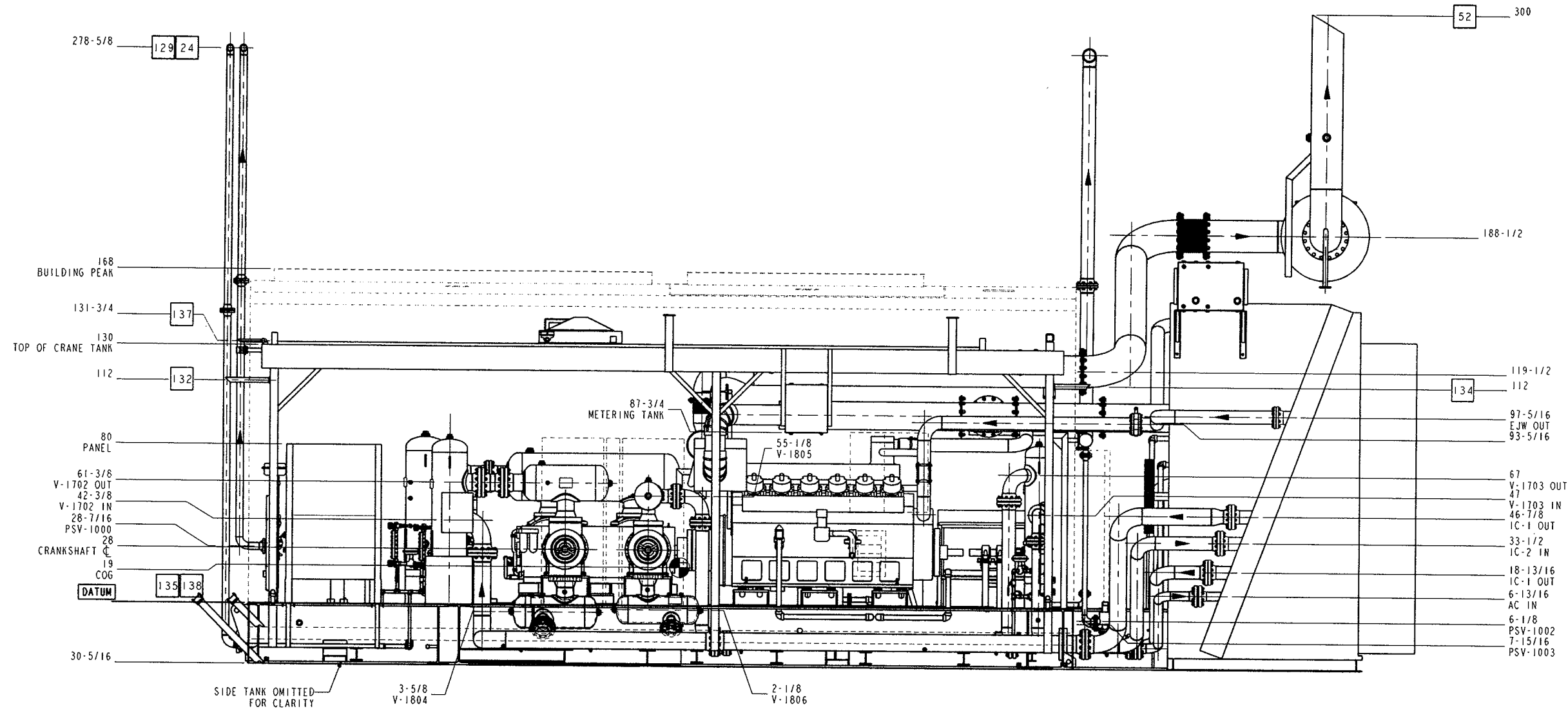
04 MAY 06

UNIVERSAL COMPRESSION

4249 - 76th Avenue S.E. 403236-9250 Main
 P.O. Box 5208, Station A 400761-5250 Toll Free
 Calgary, Alberta, Canada T2H 1R6 403236-4261 Fax

OVERALL DIMENSIONS

DESCRIPTION	LENGTH FT-IN (mm)	WIDTH FT-IN (mm)	HEIGHT FT-IN (mm)
SHIPPING	40'-10"	23'-0"	16'-5"
OVERALL	51'-4"	34'-10"	27'-3"



RIGHT SIDE OF PACKAGE

GENERAL NOTES

- IT IS UC'S RECOMMENDATION THAT ANY PRE-SPOOLING TO THIS COMPRESSOR PACKAGE CONTAIN FIELD WELDS AT ALL CUSTOMER CONNECTIONS.
- ALL PIPING MUST BE SELF SUPPORTING BEYOND THIS COMPRESSOR PACKAGE
- ALL DIMENSIONS ARE IN INCHES (UNLESS OTHERWISE SPECIFIED)
- DIMENSIONS IN "BOLD PRINT" DENOTE REFERENCE DIMENSIONS.
- DO NOT SCALE THIS DRAWING FOR CONSTRUCTION PURPOSES.
- PRIMER: . . . N/R
- PAINT: PACKAGE - (1) COAT UC STANDARD HIGH-SOLIDS EPOXY - DESERT TAN GRATING - (2) COATS MACHINE ENAMEL - BLACK
- DENOTES CENTER OF GRAVITY.
- DENOTES AS-BUILT DIMENSION.

CUSTOMER CONNECTIONS			CUSTOMER CONNECTIONS			ESTIMATED WEIGHTS		
TAG	DESCRIPTION	SIZE	TAG	DESCRIPTION	SIZE	DESCRIPTION	SHIPPING ARRANGEMENT	WEIGHT (LBS)
1	STAGE ONE INLET	10"-150# RF	134	GLYCOL TANK VENT	2" MITRE	COMPRESSOR	MOUNTED	20200
9	FINAL DISCHARGE	4"-600# RF	135	GLYCOL TANK PUMP-OUT	3" CAMLOCK	DRUM	MOUNTED	22150
10	SCRUBBER DRAIN HEADER	1-1/2" NPT	136	LUBE OIL DAT TANK VENT (ENG./COMP. CRANKCASE)	1" MITRE	COOLER	S. LOOSE	27000
23	PSV VENT HEADER	6" MITRE	137	LUBE OIL DAT TANK VENT (COMP. LUBRICATOR)	1" MITRE	SKID	MOUNTED	42000
24	SUCTION PSV	3" MITRE	138	PACKING VENT & DRAIN TANK PUMP-OUT	3" CAMLOCK	VESSEL	MOUNTED	8500
41	FUEL GAS SUPPLY	2"-150# RF	139	WASTE OIL TANK PUMP-OUT	3" CAMLOCK	EXHAUST SYSTEM	MOUNTED/S. LOOSE	6000
41	ENGINE AIR INTAKE	14"Ø	144	ENGINE JACKET WATER BLEED	3/8" NPTF	MISC.	MOUNTED/S. LOOSE	25000
52	ENGINE EXHAUST	16"Ø STACK	145	ENGINE AUXILIARY WATER BLEED	3/8" NPTF	CRANK	MOUNTED	1100
123	LUBE OIL DAT TANK FILL (ENG./COMP. CRANKCASE)	3/4" NPT	151	ENGINE AUXILIARY/JACKET WATER LOCAL FILL	3/4" NPTF	BUILDING	MOUNTED	8000
124	LUBE OIL DAT TANK FILL (COMP. LUBRICATOR)	3/4" NPT				TOTAL APPROX. SHIPPING WEIGHT		136000
126	ENGINE JACKET WATER FILL (SURGE)	2"-TR PR. CAP				TOTAL APPROX. WEIGHT OF ALL EQUIPMENT		161200
127	ENGINE AUXILIARY WATER FILL (SURGE)	2"-TR PR. CAP						
129	START GAS EXHAUST	3"-150# RF						
130	COMPRESSOR CRANKCASE VENT	2" MITRE						
132	PACKING VENT & DRAIN TANK VENT	2" MITRE						
133	WASTE OIL TANK VENT	2" MITRE						

STAMP AREA

THIS DOCUMENT IS SUPPLIED IN CONFIDENCE. REPRODUCTION OR DISTRIBUTION IN WHOLE OR IN PART WITHOUT THE WRITTEN PERMISSION OF UNIVERSAL COMPRESSION IS STRICTLY PROHIBITED.

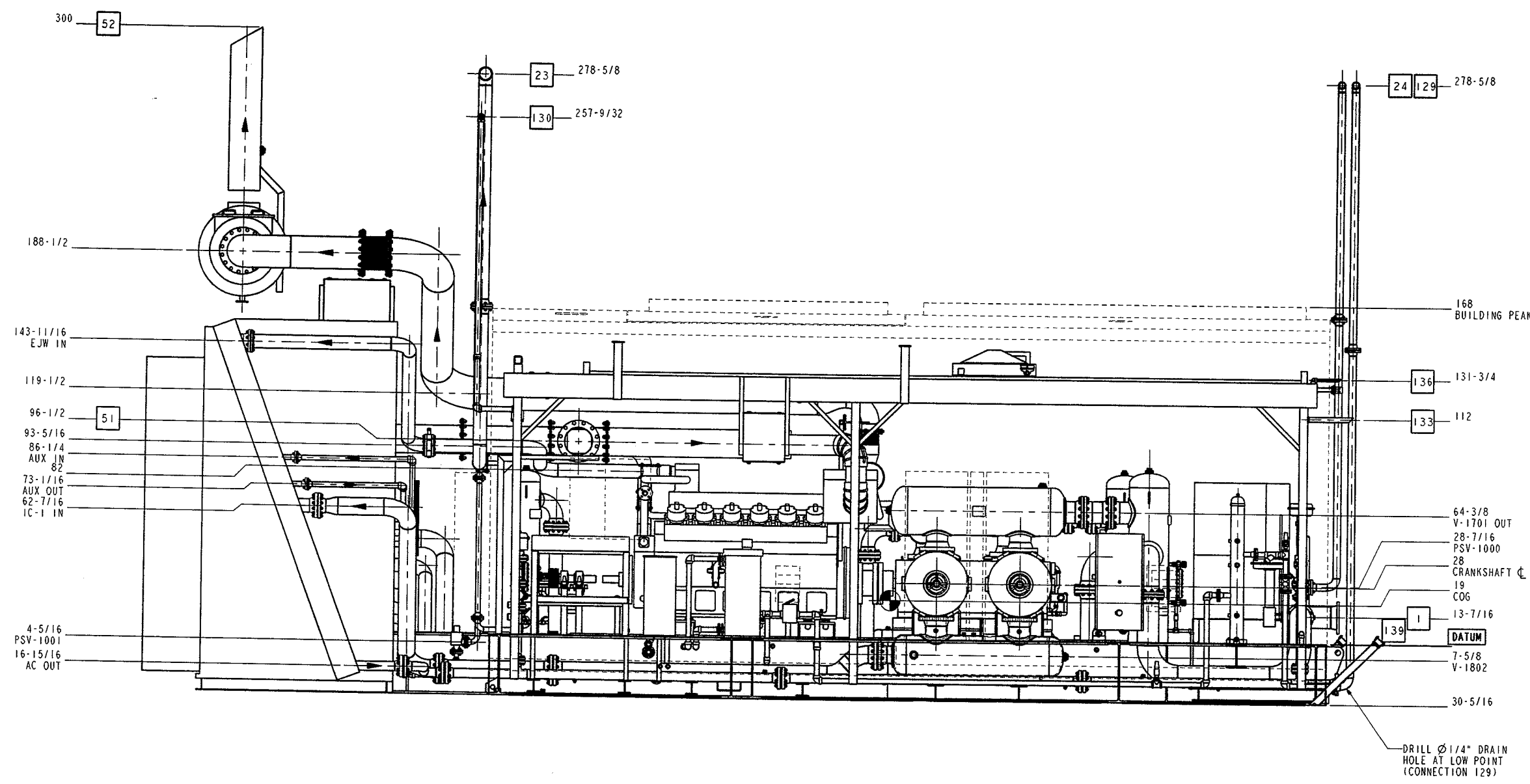
2	CE	AS-BUILT	04 MAY 06
REV	BY	CHK'D	DATE

UNIVERSAL COMPRESSION
 4949 - 76th Avenue S.E. 403/236-5252 Main
 P.O. Box 5300, Station #1 403/236-5252 Toll Free
 Calgary, Alberta, Canada T2H 1R6 403/236-4261 Fax

GENERAL ARRANGEMENT (ELEVATION)
 ARIEL J6A/4, WAUBESHA T0446S1E, AIR EXCHANGERS 156EN
 NATURAL GAS COMPRESSOR PACKAGE

OVERALL DIMENSIONS

DESCRIPTION	LENGTH FT-IN (mm)	WIDTH FT-IN (mm)	HEIGHT FT-IN (mm)
SHIPPING	40'-10"	23'-0"	16'-5"
OVERALL	51'-4"	34'-10"	27'-7"



LEFT SIDE OF PACKAGE

GENERAL NOTES

1. IT IS UC'S RECOMMENDATION THAT ANY PRE-SPOOLING TO THIS COMPRESSOR PACKAGE CONTAIN FIELD WELDS AT ALL CUSTOMER CONNECTIONS.
2. ALL PIPING MUST BE SELF SUPPORTING BEYOND THIS COMPRESSOR PACKAGE
3. ALL DIMENSIONS ARE IN INCHES (UNLESS OTHERWISE SPECIFIED).
4. DIMENSIONS IN "BOLD PRINT" DENOTE REFERENCE DIMENSIONS
5. DO NOT SCALE THIS DRAWING FOR CONSTRUCTION PURPOSES.
6. PRIMER: N/R
7. PAINT: PACKAGE - (1) COAT UC STANDARD HIGH-SOLIDS EPOXY - DESERT TAN GRATING - (2) COATS MACHINE ENAMEL - BLACK
8. DENOTES CENTER OF GRAVITY.
9. * DENOTES AS-BUILT DIMENSION.

CUSTOMER CONNECTIONS			CUSTOMER CONNECTIONS			ESTIMATED WEIGHTS		
TAG	DESCRIPTION	SIZE	TAG	DESCRIPTION	SIZE	DESCRIPTION	SHIPPING ARRANGEMENT	WEIGHT (LB)
1	STAGE ONE INLET	10"-150# RF	134	GLYCOL TANK VENT	2" MITRE	COMPRESSOR	MOUNTED	20200
9	FINAL DISCHARGE	4"-600# RF	135	GLYCOL TANK PUMP-OUT	3" CAMLOCK	DRIVER	MOUNTED	22750
10	SCRUBBER DRAIN HEADER	1-1/2" NPT	136	LUBE OIL DAY TANK VENT (ENG./COMP. CRANKCASE)	1" MITRE	COOLER	S. LOOSE	27050
23	PSV VENT HEADER	6" MITRE	137	LUBE OIL DAY TANK VENT (COMP. LUBRICATOR)	1" MITRE	SKID	MOUNTED	42000
24	SUCTION PSV	3" MITRE	138	PACKING VENT & DRAIN TANK PUMP-OUT	3" CAMLOCK	VESSEL	MOUNTED	8500
41	FUEL GAS SUPPLY	2"-150# RF	139	WASTE OIL TANK PUMP-OUT	3" CAMLOCK	EXHAUST SYSTEM	MOUNTED/IS. LOOSE	25600
51	ENGINE EXHAUST	14" Ø	144	ENGINE JACKET WATER BLEED	3/8" NPTF	MISC.	MOUNTED/IS. LOOSE	7700
123	LUBE OIL DAY TANK FILL (ENG./COMP. CRANKCASE)	3/4" NPT	145	ENGINE AUXILIARY WATER BLEED	3/8" NPTF	CRANE	MOUNTED	8000
124	LUBE OIL DAY TANK FILL (COMP. LUBRICATOR)	3/4" NPT	151	ENGINE AUXILIARY/JACKET WATER LOCAL FILL	3/4" NPTF	BUILDING	MOUNTED	138000
126	ENGINE JACKET WATER FILL (SURGE)	2"-7/8 PR. CAP	129	START GAS EXHAUST	3" -150# RF	TOTAL APPROX. SHIPPING WEIGHT		167200
127	ENGINE AUXILIARY WATER FILL (SURGE)	2"-7/8 PR. CAP				TOTAL APPROX. WEIGHT OF ALL EQUIPMENT		
129	START GAS EXHAUST	3" -150# RF						
130	COMPRESSOR CRANKCASE VENT	2" MITRE						
132	PACKING VENT & DRAIN TANK VENT	2" MITRE						
133	WASTE OIL TANK VENT	2" MITRE						

STAMP AREA

THIS DOCUMENT IS SUPPLIED IN CONFIDENCE. REPRODUCTION OR DISTRIBUTION IN WHOLE OR IN PART WITHOUT THE WRITTEN PERMISSION OF UNIVERSAL COMPRESSION IS STRICTLY PROHIBITED.

OVERALL DIMENSIONS

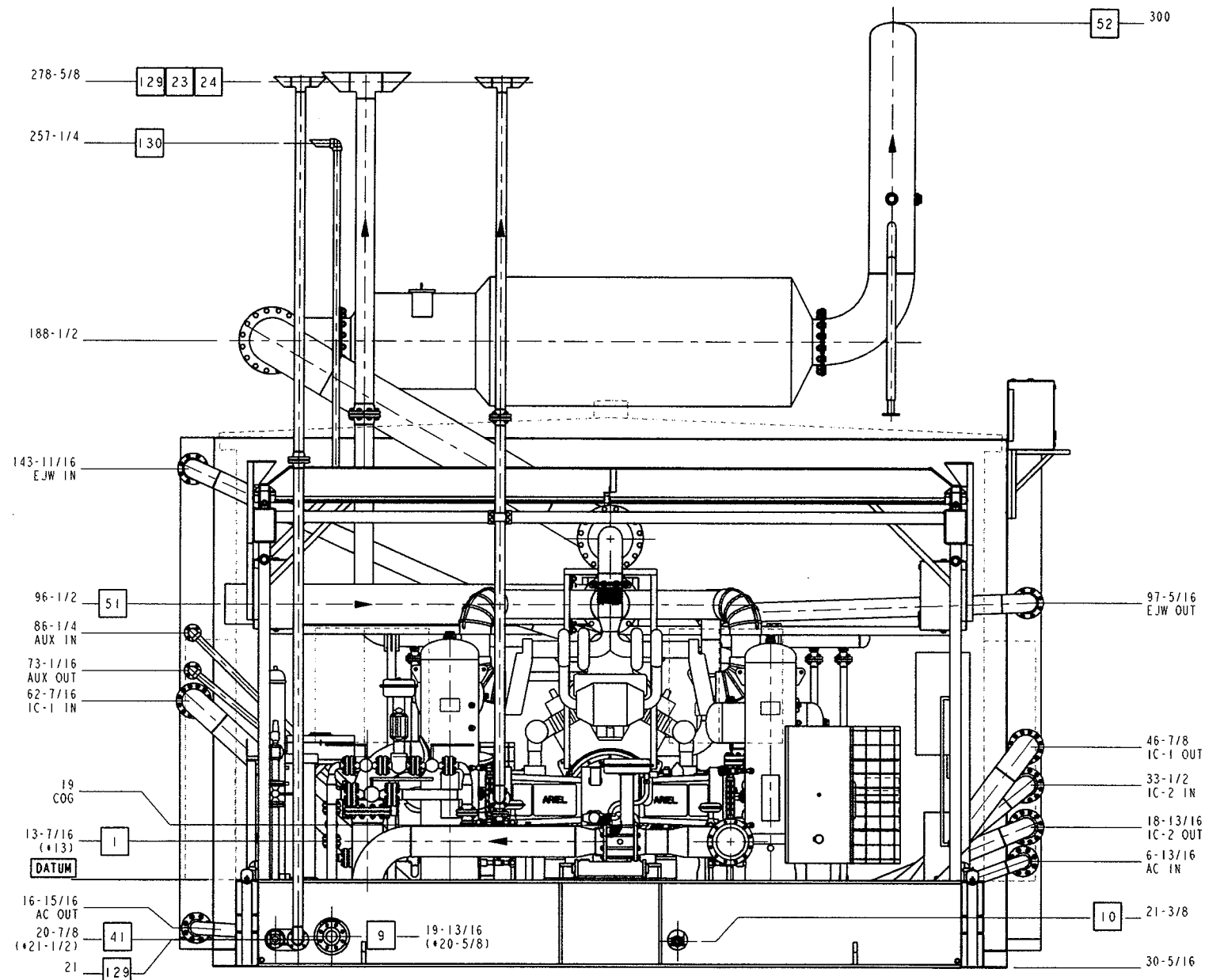
DESCRIPTION	LENGTH FT-IN (mm)	WIDTH FT-IN (mm)	HEIGHT FT-IN (mm)
SHIPPING	40'-10"	23'-0"	16'-5"
OVERALL	51'-4"	34'-10"	27'-3"

REV	BY	CHK'D	DESCRIPTION	DATE
2	2	AS-BUILT		04 MAY 06



UNIVERSAL COMPRESSION
 4949 - 76th Avenue S.E. 4037234-2522 Main
 P.O. Box 5308, Station A 0001641-2522 Toll Free
 Calgary, Alberta, Canada T2H 1K6 4037234-4261 Fax

GENERAL ARRANGEMENT (ELEVATION)
 ARIEL 36474, WAUKESHA T044831C, AIR EXCHANGERS 156EH
 NATURAL GAS COMPRESSOR PACKAGE



BACK OF PACKAGE

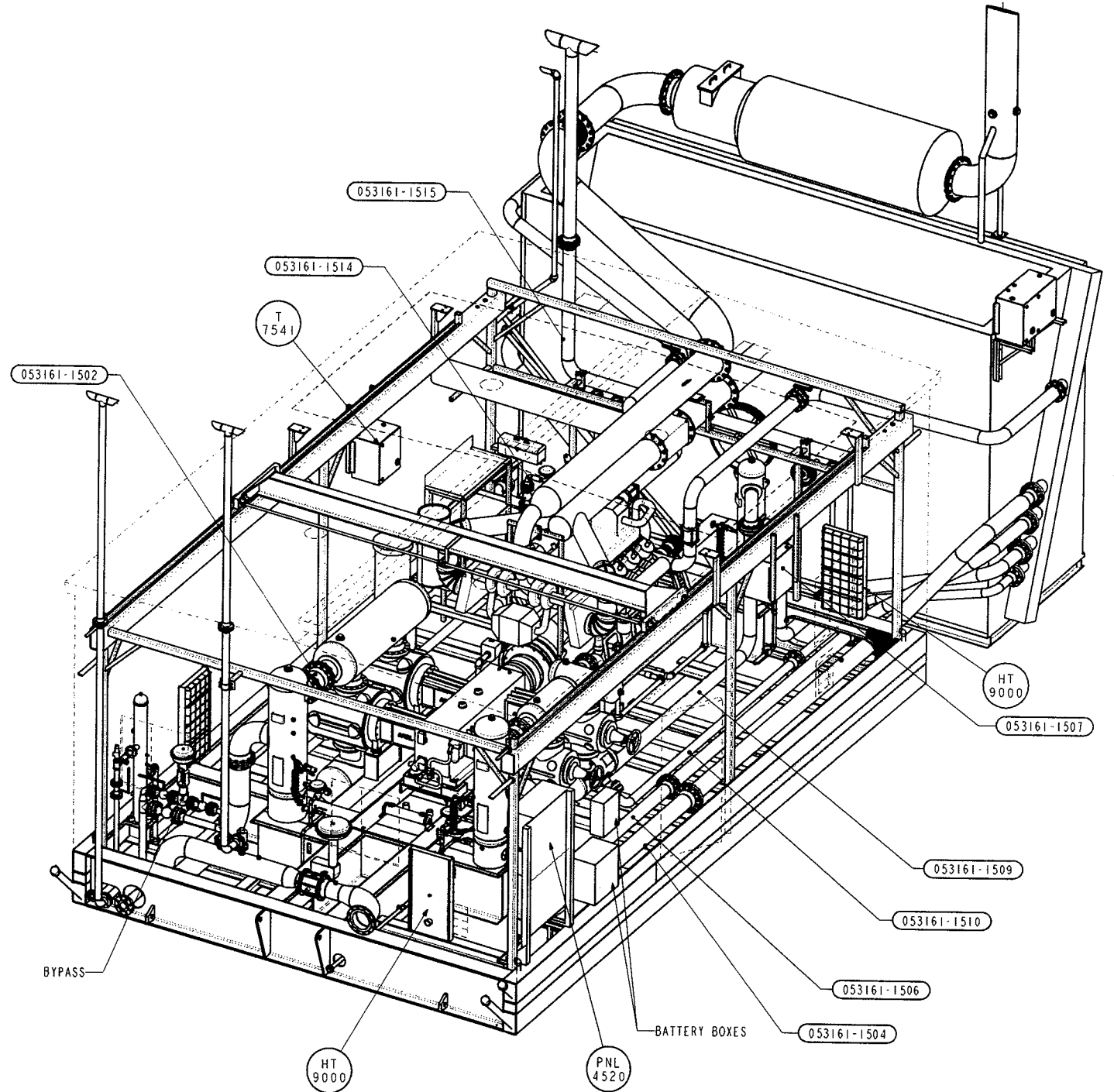
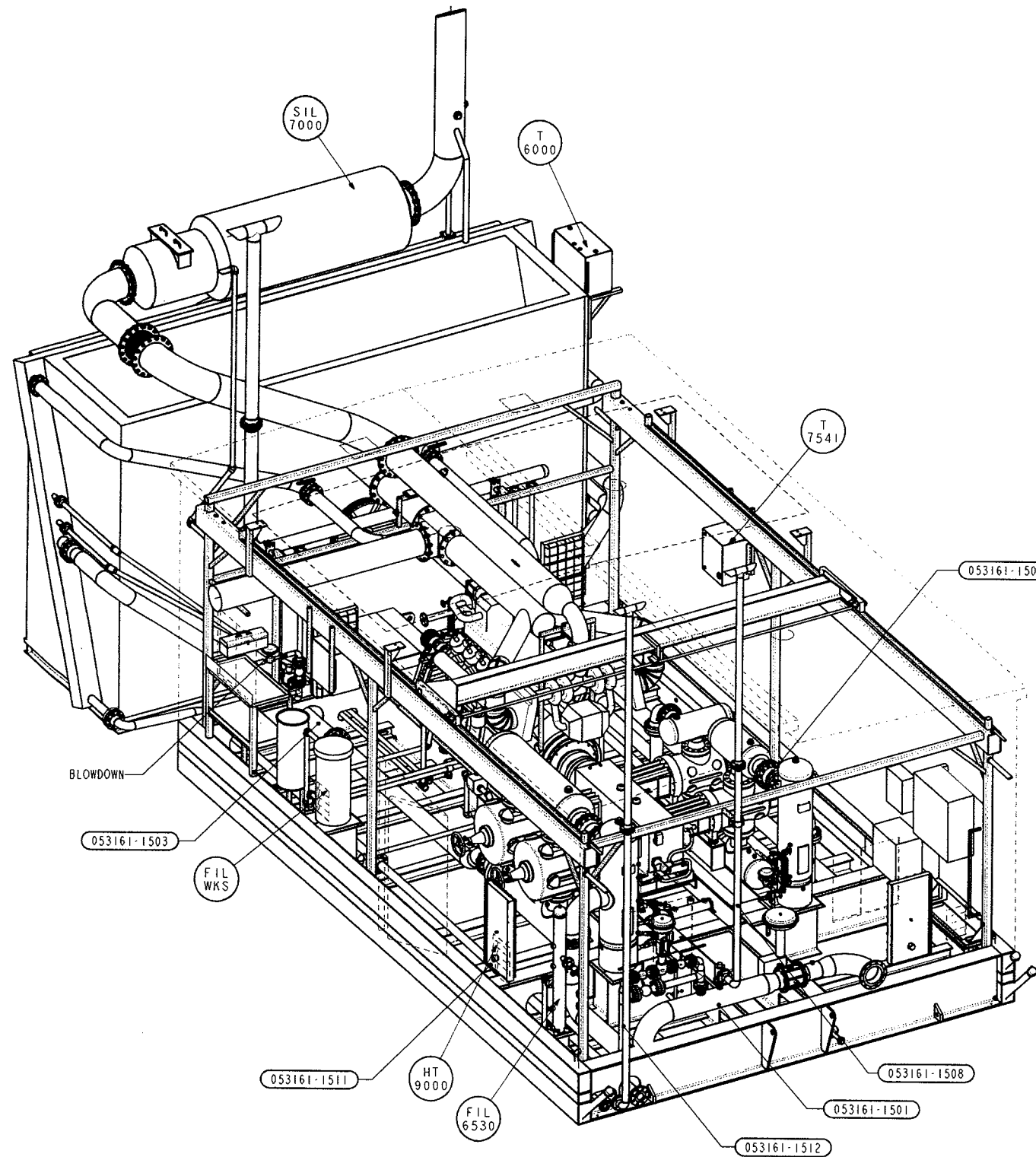
GENERAL NOTES			CUSTOMER CONNECTIONS			CUSTOMER CONNECTIONS			ESTIMATED WEIGHTS			STAMP AREA		
TAG	DESCRIPTION	SIZE	TAG	DESCRIPTION	SIZE	DESCRIPTION	SHIPPING ARRANGEMENT	WEIGHT (LBS)	DESCRIPTION	SHIPPING ARRANGEMENT	WEIGHT (LBS)	DESCRIPTION	SHIPPING ARRANGEMENT	WEIGHT (LBS)
1	STAGE ONE INLET	10"-150# RF	134	GLYCOL TANK VENT	2" MITRE	COMPRESSOR	MOUNTED	20200	DRIVER	MOUNTED	22150	COOLER	5" LOOSE	23650
9	FINAL DISCHARGE	2"-600# RF	135	GLYCOL TANK PUMP OUT	3" CAMLOCK	VESSSEL	MOUNTED	6500	EXHAUST SYSTEM	MOUNTED/LS. LOOSE	6000	CRANE	MOUNTED	7700
10	SCRUBBER DRAIN HEADER	1-1/2" NPT	136	LUBE OIL DAY TANK VENT (COMP. CRANKCASE)	1" MITRE	MISC.	MOUNTED/LS. LOOSE	25000	BUILDING	MOUNTED	8000	TOTAL APPROX. SHIPPING WEIGHT		138000
23	PSY VENT HEADER	6" MITRE	137	LUBE OIL DAY TANK VENT (COMP. LUBRICATOR)	1" MITRE	CRANE	MOUNTED	147200	TOTAL APPROX. WEIGHT OF ALL EQUIPMENT					
24	SUCTION PSV	3" MITRE	138	LUBE OIL DAY TANK VENT (COMP. LUBRICATOR)	1" MITRE	VESSSEL	MOUNTED	6500						
41	FUEL GAS SUPPLY	2"-150# RF	139	PACKING VENT & DRAIN TANK PUMP-OUT	3" CAMLOCK	VESSSEL	MOUNTED	6500						
51	ENGINE AIR INTAKE	14"Ø	144	WASTE OIL TANK PUMP-OUT	3" CAMLOCK	EXHAUST SYSTEM	MOUNTED/LS. LOOSE	6000						
52	ENGINE EXHAUST	16"Ø STACK	145	ENGINE JACKET WATER BLEED	3/8" NPTF	MISC.	MOUNTED/LS. LOOSE	25000						
123	LUBE OIL DAY TANK FILL (COMP. CRANKCASE)	3/4" NPT	151	ENGINE AUXILIARY WATER BLEED	3/8" NPTF	CRANE	MOUNTED	7700						
124	LUBE OIL DAY TANK FILL (COMP. LUBRICATOR)	3/4" NPT	151	ENGINE AUXILIARY/JACKET WATER LOCAL FILL	3/4" NPTF	BUILDING	MOUNTED	8000						
126	ENGINE JACKET WATER FILL (SURGE)	2"-14 PR. CAP												
127	ENGINE AUXILIARY WATER FILL (SURGE)	2"-14 PR. CAP												
129	START GAS EXHAUST	3"-150# RF												
130	COMPRESSOR CRANKCASE VENT	2" MITRE												
132	PACKING VENT & DRAIN TANK VENT	2" MITRE												
133	WASTE OIL TANK VENT	2" MITRE												

UNIVERSAL COMPRESSION
 4800 - 161st Avenue S.E. 403/234-3232 West
 P.O. Box 5300, Station A 403/461-5232 Toll Free
 Calgary, Alberta, Canada T2H 1K6 403/234-4261 Fax

GENERAL ARRANGEMENT (ELEVATION)
 ARIEL JGN/4, MAURESHA T9446S1E, AIR EXCHANGERS 156EN
 NATURAL GAS COMPRESSOR PACKAGE

THIS DOCUMENT IS SUPPLIED IN CONFIDENCE. REPRODUCTION OR DISTRIBUTION IN WHOLE OR IN PART WITHOUT THE WRITTEN PERMISSION OF UNIVERSAL COMPRESSION IS STRICTLY PROHIBITED.

2	CE	Bm	AS-BUILT	04 MAY 06
REV	BY	CHK'D	ECR No. or REVISION DESCRIPTION	DATE



ISO VIEWS

GENERAL NOTES

1. IT IS UC'S RECOMMENDATION THAT ANY PRE-SPOOLING TO THIS COMPRESSOR PACKAGE CONTAIN FIELD WELDS AT ALL CUSTOMER CONNECTIONS.
2. ALL PIPING MUST BE SELF SUPPORTING BEYOND THIS COMPRESSOR PACKAGE.
3. ALL DIMENSIONS ARE IN INCHES (UNLESS OTHERWISE SPECIFIED).
4. DIMENSIONS IN "BOLD PRINT" DENOTE REFERENCE DIMENSIONS.
5. DO NOT SCALE THIS DRAWING FOR CONSTRUCTION PURPOSES.
6. PRIMER: N/A
7. PAINT: PACKAGE - (1) COAT UC STANDARD HIGH-SOLIDS EPOXY - DESERT TAN GRATING - (2) COATS MACHINE ENAMEL - BLACK
8. DENOTES CENTER OF GRAVITY.
9. * DENOTES AS-BUILT DIMENSION.

CUSTOMER CONNECTIONS

TAG	DESCRIPTION	SIZE	TAG	DESCRIPTION	SIZE
1	STAGE ONE INLET	10" 150# RF	134	GLYCOL TANK VENT	2" NITRE
9	FINAL DISCHARGE	4" 600# RF	135	GLYCOL TANK PUMP-OUT	3" CAMLOCK
10	SCRUBBER DRAIN HEADER	1-1/2" NPT	136	LUBE OIL DAY TANK VENT (COMP. CRANKCASE)	1" NITRE
23	PSV VENT HEADER	6" NITRE	137	LUBE OIL DAY TANK VENT (COMP. LUBRICATOR)	1" NITRE
24	SUCTION PSV	3" NITRE	138	PACKING VENT & DRAIN TANK PUMP-OUT	3" CAMLOCK
41	FUEL GAS SUPPLY	2" 150# RF	139	WASTE OIL TANK PUMP-OUT	3" CAMLOCK
51	ENGINE AIR INTAKE	14" Ø	144	ENGINE JACKET WATER BLEED	3/8" NPTF
52	ENGINE EXHAUST	16" Ø STACK	145	ENGINE AUXILIARY WATER BLEED	3/8" NPTF
123	LUBE OIL DAY TANK FILL (COMP. CRANKCASE)	3/4" NPT	151	ENGINE AUXILIARY JACKET WATER LOCAL FILL	3/4" NPTF
124	LUBE OIL DAY TANK FILL (COMP. LUBRICATOR)	3/4" NPT			
126	ENGINE JACKET WATER FILL (SURGE)	2" 7# PR. CAP			
127	ENGINE AUXILIARY WATER FILL (SURGE)	2" 7# PR. CAP			
129	START GAS EXHAUST	3" 150# RF			
130	COMPRESSOR CRANKCASE VENT	2" NITRE			
132	PACKING VENT & DRAIN TANK VENT	2" NITRE			
133	WASTE OIL TANK VENT	2" NITRE			

CUSTOMER CONNECTIONS

TAG	DESCRIPTION	SIZE	TAG	DESCRIPTION	SIZE
134	GLYCOL TANK VENT	2" NITRE	134	GLYCOL TANK VENT	2" NITRE
135	GLYCOL TANK PUMP-OUT	3" CAMLOCK	135	GLYCOL TANK PUMP-OUT	3" CAMLOCK
136	LUBE OIL DAY TANK VENT (COMP. CRANKCASE)	1" NITRE	136	LUBE OIL DAY TANK VENT (COMP. CRANKCASE)	1" NITRE
137	LUBE OIL DAY TANK VENT (COMP. LUBRICATOR)	1" NITRE	137	LUBE OIL DAY TANK VENT (COMP. LUBRICATOR)	1" NITRE
138	PACKING VENT & DRAIN TANK PUMP-OUT	3" CAMLOCK	138	PACKING VENT & DRAIN TANK PUMP-OUT	3" CAMLOCK
139	WASTE OIL TANK PUMP-OUT	3" CAMLOCK	139	WASTE OIL TANK PUMP-OUT	3" CAMLOCK
144	ENGINE JACKET WATER BLEED	3/8" NPTF	144	ENGINE JACKET WATER BLEED	3/8" NPTF
145	ENGINE AUXILIARY WATER BLEED	3/8" NPTF	145	ENGINE AUXILIARY WATER BLEED	3/8" NPTF
151	ENGINE AUXILIARY JACKET WATER LOCAL FILL	3/4" NPTF	151	ENGINE AUXILIARY JACKET WATER LOCAL FILL	3/4" NPTF

ESTIMATED WEIGHTS

DESCRIPTION	SHIPPING ARRANGEMENT	WEIGHT (LBS)
COMPRESSOR	MOUNTED	20200
DRIVER	MOUNTED	22750
COOLER	S. LOOSE	27050
SKID	MOUNTED	42000
VESSEL	MOUNTED/LOOSE	6500
EXHAUST SYSTEM	MOUNTED/S. LOOSE	25000
MISC.	MOUNTED/S. LOOSE	7700
CRANE	MOUNTED	8000
BUILDING	MOUNTED	138000
TOTAL APPROX. SHIPPING WEIGHT		167200
TOTAL APPROX. WEIGHT OF ALL EQUIPMENT		167200

OVERALL DIMENSIONS

DESCRIPTION	LENGTH FT-IN (mm)	WIDTH FT-IN (mm)	HEIGHT FT-IN (mm)
SHIPPING	40'-10"	23'-0"	16'-5"
OVERALL	51'-4"	34'-10"	27'-3"

STAMP AREA

THIS DOCUMENT IS SUPPLIED IN CONFIDENCE. REPRODUCTION OR DISTRIBUTION IN WHOLE OR IN PART WITHOUT THE WRITTEN PERMISSION OF UNIVERSAL COMPRESSION IS STRICTLY PROHIBITED.

2 CE *BM* AS-BUILT 04 MAY 06
 REV: 01 CHG: 0 ECR: 01 REVISION DESCRIPTION DATE

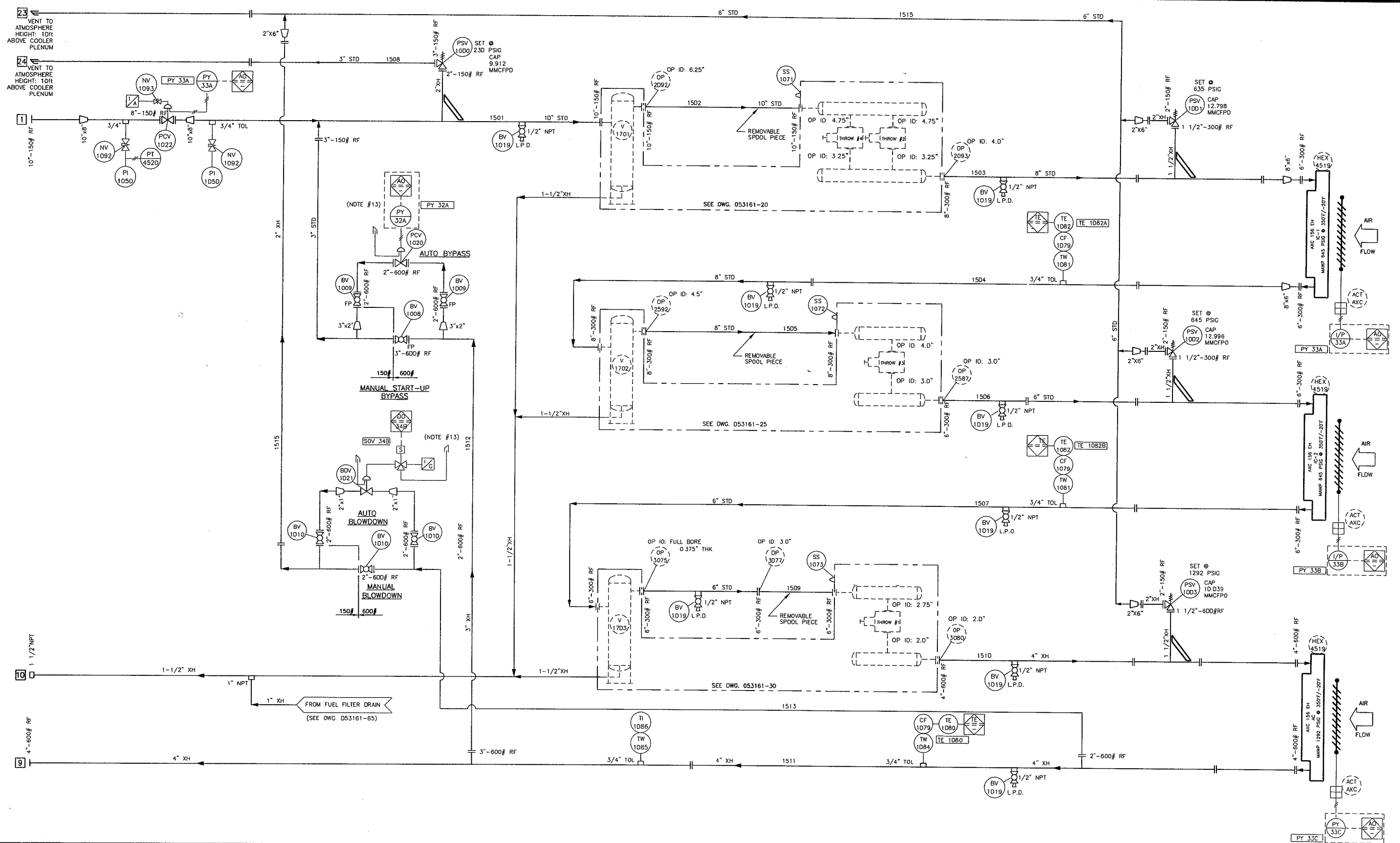


UNIVERSAL COMPRESSION

4849 - 76th Avenue S.E. #03234-5252 Mesa
 P.O. Box 5308, Station A 80261-5252 Tell Free
 Calgary, Alberta, Canada T2M 1S4 403/236-4261 Fax

GENERAL ARRANGEMENT (PERSPECTIVE)
 ARIEL JGR/4, WAUKESHA 1044SG1E, AIR EXCHANGERS 156EH
 NATURAL GAS COMPRESSOR PACKAGE

25 NOV 05



CUSTOMER CONNECTIONS

TAG	DESCRIPTION	SIZE	TAG	DESCRIPTION	SIZE
1	STAGE ONE INLET	10"-150# RF			
9	FINAL DISCHARGE	4"-600# RF			
10	SCRUBBER DRAIN HEADER	1-1/2" NPT			
23	PSV HEADER	6"- MITERED			
24	SUCTION PSV	3"- MITERED			

GENERAL NOTES

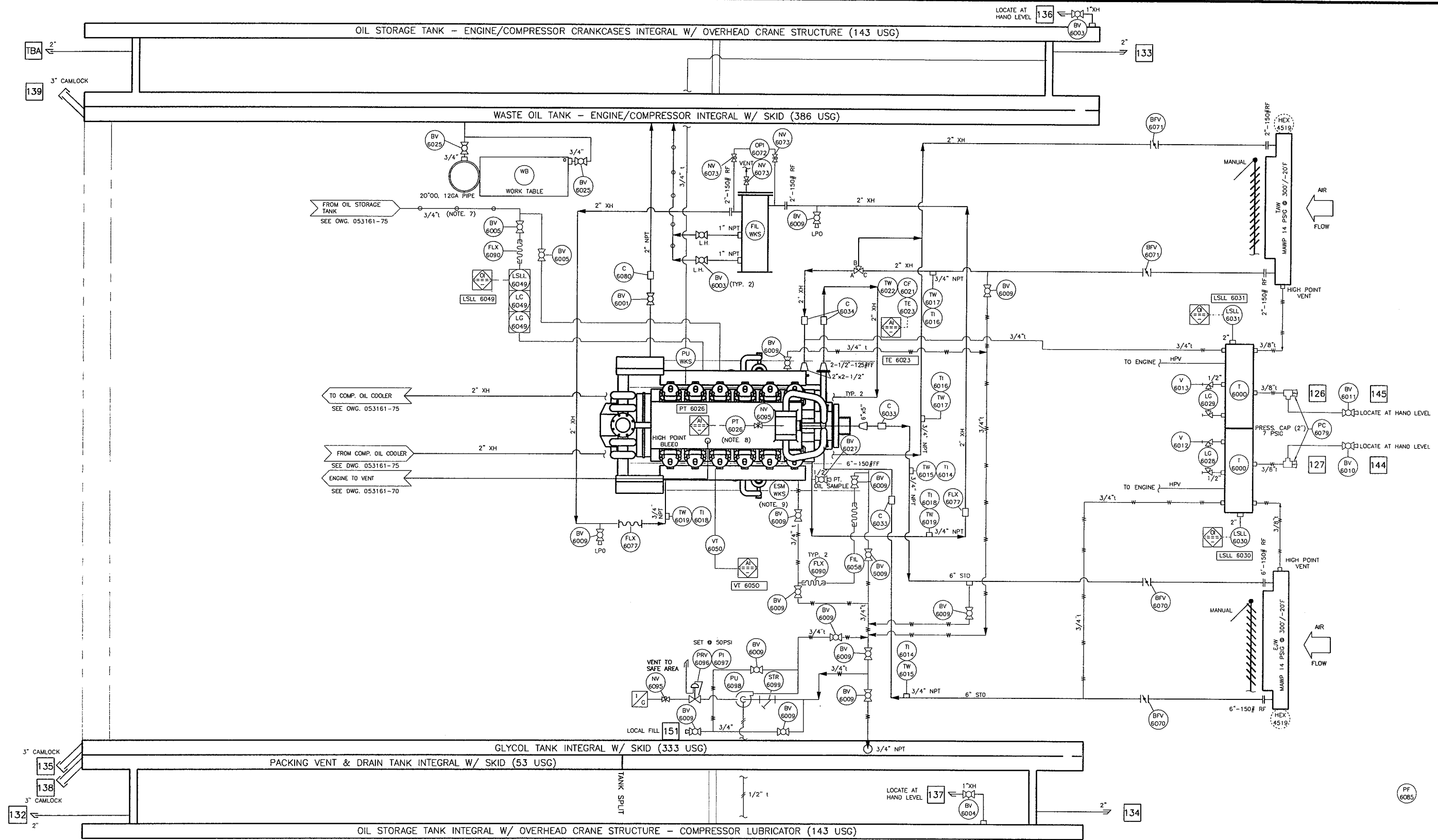
- PROCESS INSTRUMENT LINES: 316SS TUBING c/w 3/8" SWAGelok ZINC PLATED FITTINGS WITH ZINC PLATED (FRONT) FERRULES & 316SS (BACK) FERRULES
- UTILITY INSTRUMENT LINES: 316SS TUBING c/w 3/8" SWAGelok ZINC PLATED FITTINGS WITH ZINC PLATED (FRONT) FERRULES & 316SS (BACK) FERRULES
- INSTRUMENT MEDIUM: CLEAN, DRY GAS
- ALL PIPING 2" AND UNDER TO BE XH MINIMUM.
- ALL FITTINGS TO BE 3000# RATING UNLESS OTHERWISE NOTED (PROCESS ONLY).
- CORROSION ALLOWANCE: 1/16" (0.0625")
- AREA CLASSIFICATION: CLASS 1, DIV 2
- CONDUIT TYPE: GALVANIZED STEEL
- INSTRUMENT TAGS REQUIRED: YES NO
- SURFACE PREPARATION: SSPC-2, SSPC-SP7 (AS REQ'D)
- PRIMER (1) COAT: N/A
- PAINT (1) COAT: DTM DIRECT TO METAL POLYURETHANE ENAMEL SKID/PIPING/CODLER COLOR: DESERT TAN ENG/COMP/COLDR: DESERT TAN
- "SAFE AREA" SHALL BE AN AREA OUTSIDE ENCLOSURE. VENTS SHALL BE DIRECTED TO AVOID RECIRCULATION INTO THE BUILDING VIA VENTS, INGESTION INTO THE ENGINE AIR INTAKE OR IMPINGEMENT ON ANY HOT SURFACES (SILENCERS, CATALYTIC CONVERTER, ENGINE EXHAUST PIPING.)

STAMP AREA

REV.	BY	CHK'D	REVISION DESCRIPTION	DATE
1	CE	Bm	AS-BUILT	04 MAY 06
0	CE	BM	ISSUED FOR CONSTRUCTION	03 FEB 06

UNIVERSAL[®] COMPRESSION
 4949 - 76th Avenue S.E. 403/236-5252 Main
 Calgary, Alberta, Canada T2H 1X6 800/661-5252 Toll Free
 403/236-4261 Fax

TITLE: **PROCESS & INSTRUMENT DIAGRAM**
 ARIEL JGK/4, WAUKESHA 7044 GSE, AXC 156EH
 NATURAL GAS COMPRESSOR PACKAGE, SILT CO.



CUSTOMER CONNECTIONS

TAG	DESCRIPTION	SIZE	TAG	DESCRIPTION	SIZE
126	JACKET WATER FILL (SURGE)	2" PRESSURE CAP			
127	AUXILIARY WATER FILL (SURGE)	2" PRESSURE CAP			
132	PACKING VENT & DRAIN TANK VENT	2" MITRE			
133	WASTE OIL TANK VENT	2" MITRE			
134	GLYCOL TANK VENT	2" MITRE			
135	GLYCOL TANK PUMP OUT	3" CAMLOCK			
136	ENGINE OIL TANK VENT	1"XH			
137	LUBE OIL OAY TANK VENT	1"XH			
138	PACKING VENT & DRAIN TANK PUMP OUT	3" CAMLOCK			
139	WASTE OIL TANK PUMP OUT	3" CAMLOCK			
144	ENGINE JACKET WATER BLEED	3/8" NPT			
145	ENGINE AUX. WATER BLEED	3/8" NPT			
151	ENGINE JACKET/AUX. WATER LOCAL FILL	3/4" NPT			
TBA	TBA	2" MITRE			

GENERAL NOTES

- UTILITY INSTRUMENT LINES: 316SS TUBING c/w 3/8" SWAGELOK ZINC PLATED FITTINGS WITH ZINC PLATED (FRONT) FERRULES & 316SS (BACK) FERRULES
- INSTRUMENT MEDIUM: CLEAN, DRY GAS
- ALL PIPING 2" AND UNDER TO BE XH MINIMUM.
- AREA CLASSIFICATION: CLASS 1, DIV. 2
- CONDUIT TYPE: GALVANIZED STEEL
- INSTRUMENT TAGS REQUIRED: YES NO
- "SAFE AREA" SHALL BE AN AREA OUTSIDE ENCLOSURE VENTS SHALL BE DIRECTED TO AVOID RECIRCULATION INTO THE BUILDING VIA VENTS, INGESTION INTO THE ENGINE AIR INTAKE OR IMPINGEMENT ON ANY HOT SURFACES (SILENCERS, CATALYTIC CONVERTER, ENGINE EXHAUST PIPING.)
- LOCATE EJW PT 6026 DOWNSTREAM OF EJW PUMP
- ESM PROGRAM OPTIONS: 1, 2, 3, 4
--PROVIDE ENGINE SPEED, ENGINE OIL PRESSURE, ENGINE COOLANT TEMPERATURE AND ENGINE MANIFOLD TEMPERATURE

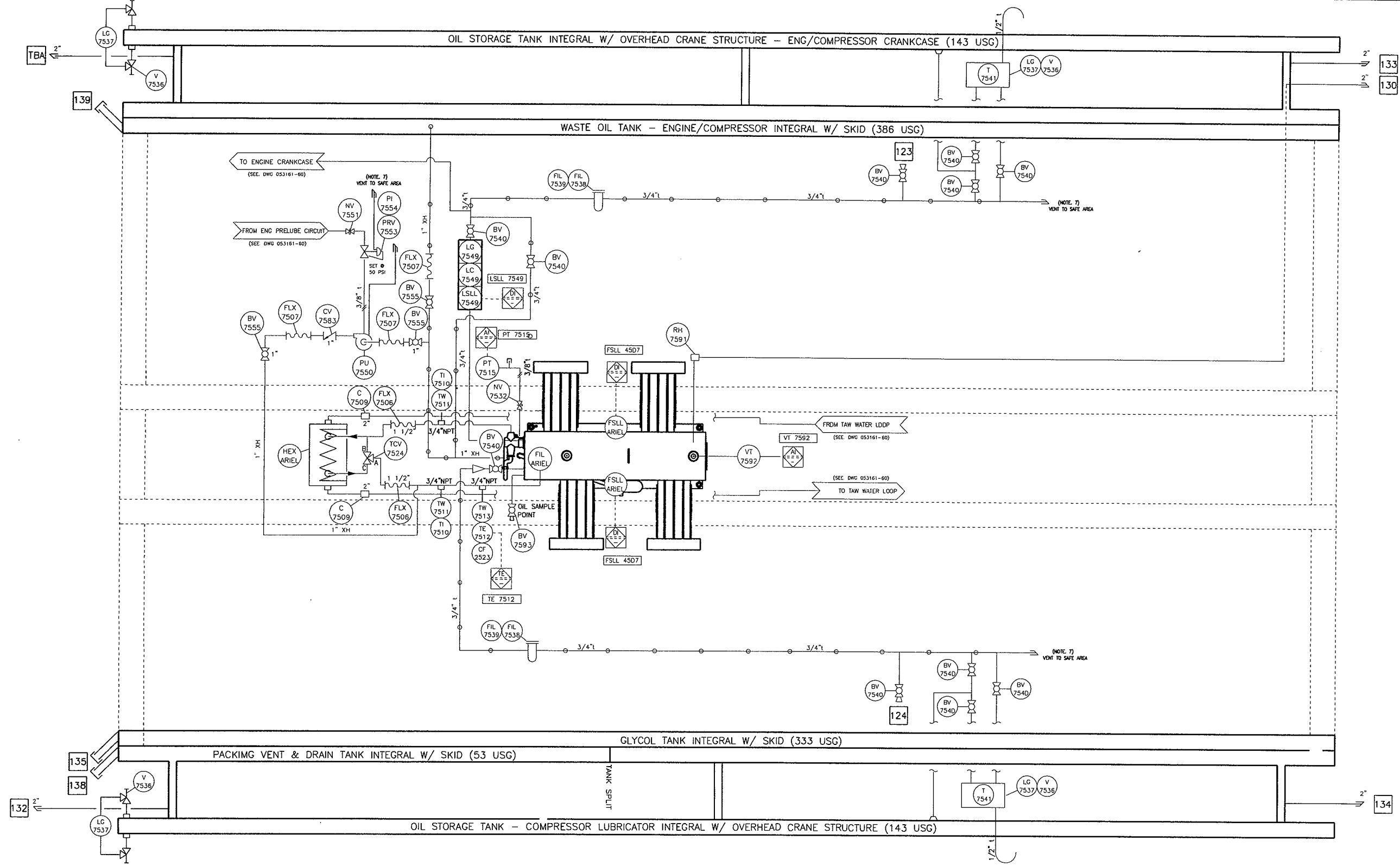
STAMP AREA

REV	BY	CHK'D	REVISION DESCRIPTION	DATE
1	CE	Bm	AS-BUILT	04 MAY 06
0	CE	Bm	ISSUED FOR CONSTRUCTION	03 FEB 06

UNIVERSAL[®] COMPRESSION
 4949 - 76th Avenue S.E. 403/236-5252 Main
 Calgary, Alberta, Canada T2H 1X6 800/661-5252 Toll Free
 403/236-4261 Fax

TITLE: UTILITIES & INSTRUMENTATION DIAGRAM
 ARIEL JGK/4, WALKESHA 7044 CSIE, AXC 156EH
 NATURAL GAS COMPRESSOR PACKAGE, SILT CO.

PF 6085



CUSTOMER CONNECTIONS

TAG	DESCRIPTION	SIZE	TAG	DESCRIPTION	SIZE
123	LUBE OIL TANK FILL (ENG./COMP CRANKCASE)	3/4" NPT			
124	LUBE OIL TANK FILL (COMP. LUBRICATOR)	3/4" NPT			
130	COMPRESSOR CRANKCASE VENT	2" MITRE			
132	PACKING VENT & DRAIN TANK VENT	2" MITRE			
133	WASTE OIL TANK VENT	2" MITRE			
134	GLYCOL TANK VENT	2" MITRE			
135	GLYCOL TANK PUMP OUT	3" CAMLOCK			
138	PACKING VENT & DRAIN TANK PUMP OUT	3" CAMLOCK			
139	WASTE OIL TANK PUMP OUT	3" CAMLOCK			
TBA	TBA	2" MITRE			

GENERAL NOTES

- UTILITY INSTRUMENT LINES: 316SS TUBING c/w 3/8" SWAGelok ZINC PLATED FITTINGS WITH ZINC PLATED (FRONT) FERRULES & 316SS (BACK) FERRULES
- INSTRUMENT MEDIUM: CLEAN, DRY GAS
- ALL PIPING 2" AND UNDER TO BE XH MINIMUM.
- AREA CLASSIFICATION: CLASS 1, DIV. 2
- CONDUIT TYPE: GALVANIZED STEEL
- INSTRUMENT TAGS REQUIRED: YES NO
- "SAFE AREA" SHALL BE AN AREA OUTSIDE ENCLOSURE. VENTS SHALL BE DIRECTED TO AVOID RECIRCULATION INTO THE BUILDING VIA VENTS, INGESTION INTO THE ENGINE AIR INTAKE OR IMPINGEMENT ON ANY HOT SURFACES (SILENCERS, CATALYTIC CONVERTER, ENGINE EXHAUST PIPING)

STAMP AREA

1	CE	BM	AS-BUILT	04 MAY 06
0	CE	SM	ISSUED FOR CONSTRUCTION	03 FEB 06
REV.	BY	CHK'D	REVISION DESCRIPTION	DATE

UNIVERSAL[®] COMPRESSION
 4949 - 76th Avenue S.E. 403/236-5252 Main
 Calgary, Alberta, Canada T2H 1X6 800/661-5252 Toll Free
 403/236-4261 Fax

TITLE: **PROCESS & INSTRUMENT DIAGRAM**
 ARIEL JGK/4, WAUKESHA 7044 GSIE, AXG 156EH
 NATURAL GAS COMPRESSOR PACKAGE, SILT CO

