

ITEM	QTY.	CODE No.	DESCRIPTION
001	4	NPW	T COUPLE, ALLTEMPRAF-1313-U-60-K-12.5\"/>

ITEM	QTY.	CODE No.	DESCRIPTION
001	4	NPW	T COUPLE, ALLTEMPRAF-1313-U-60-K-12.5\"/>

- GENERAL NOTES**
- THIS DRAWING IS NOT TO BE USED FOR CONSTRUCTION UNLESS RELEASED FOR MANUFACTURE.
 - ALL PROCESS PIPING TO BE CLAMPED AS NEAR TO ALL ELBOWS AS POSSIBLE, REFER TO DRAWING 12.0006.
 - FOR DESIGN PARAMETERS REFER TO PROJECT SCOPE SUMMARY DRAWING.
 - FOR CUSTOMER CONNECTIONS REFER TO GENERAL ARRANGEMENT DRAWING.
 - PIPE NIPPLES 1-1/2\"/>

LEGEND

	CUSTOMER CONNECTIONS		LOW POINT DRAIN (PLUGGED)
	LOCALLY MOUNTED		

REV	DESCRIPTION	DATE	DWN BY
3	AS BUILT	98/05/27	TTS
2	REVISED AS NOTED	98/03/30	RCG
1	FOR CONSTRUCTION	98/01/08	RCG
0	FOR APPROVAL	98/01/08	RCG

ENERFLEX Manufacturing

ENERFLEX SYSTEMS LTD. CALDARY EDMONTON MEDICINE HAT RED DEER
 4949, 78 Avenue S.E. Calgary, Alberta T2C 3C6

SURREY, B.C. FORT ST. JOHN, B.C. SCARBOROUGH, ONTARIO LLOYDMASTER, SASKATCHEWAN
 FORT MACMURRAY PERTH, AUSTRALIA STONEY, AUSTRALIA

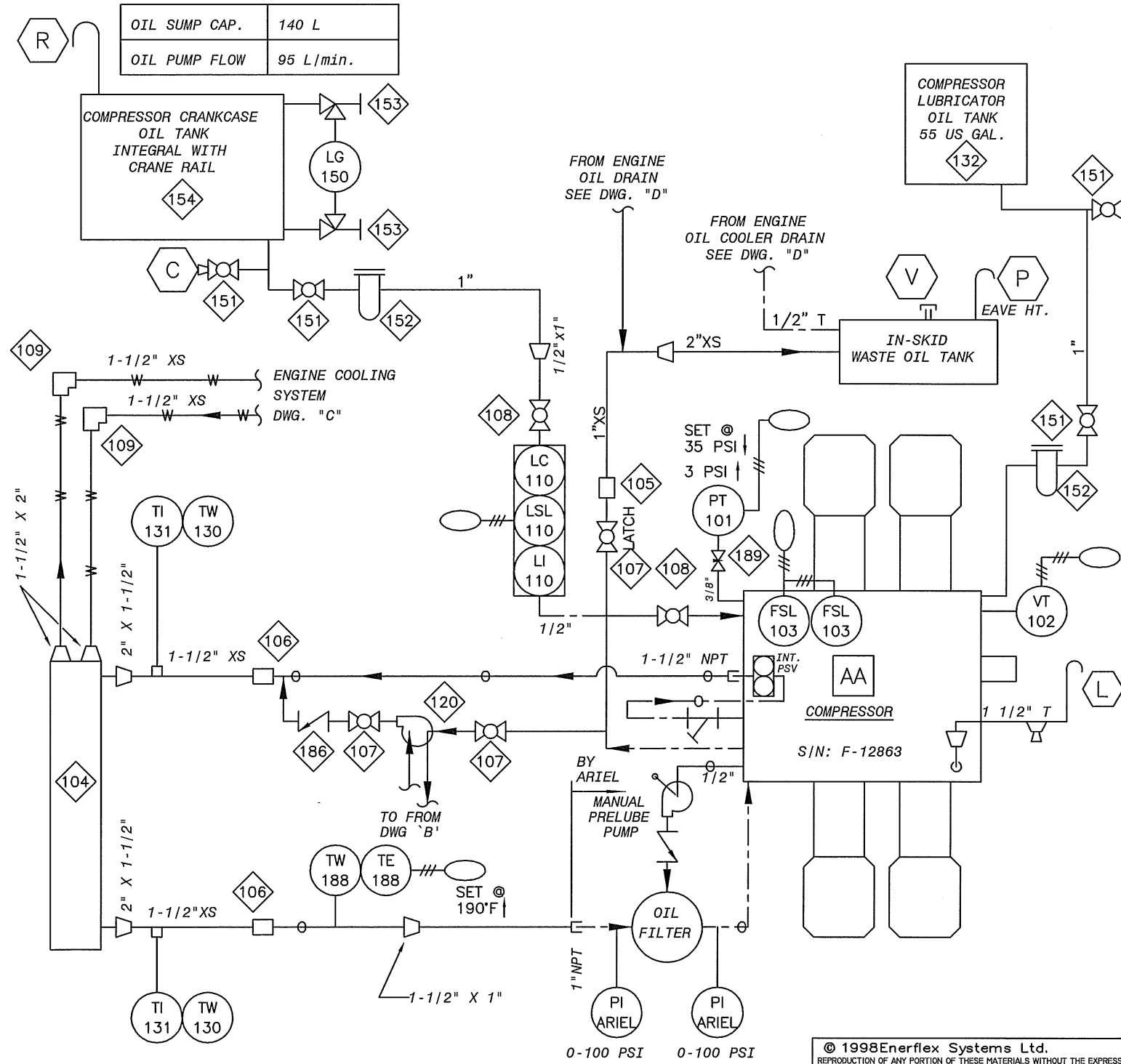
TITLE: PROCESS & INSTRUMENTATION DIAGRAM
ARIEL JGK/4, WAUKESHA L7042GL, AIR-X-CHANGERS 156EH COMPRESSOR PACKAGE

FOR: SUNCOR INC. (STOCK UNIT, ALBERTA)

CONSULTANT: GEMINI **LSD:** TBA
P.O.: **JOB No.:** 97123

ORIG DWN BY: RCG **APPROVED BY:** DATE: **DWG No.:** PF97123 **OPER'N #:** 50

- NOTE:**
1. SEE THE GENERAL ARRANGEMENT DRAWING FOR THE CORRECT CYLINDER ORIENTATION.
 2. OIL TANKS IN CRANE RAIL TO HAVE REPADS BETWEEN TANK AND SUPPORT COLUMN
 3. MOUNT LUBRICATOR OIL TANK OVER COMPRESSOR FRAME.



BILL OF MATERIAL

ITEM	QTY.	CODE No.	DESCRIPTION
101	1	ZNPN	PRES TRANS WIKA 0-100PSIG W1 CABLE (BY EXACTA) SHIPPED LOOSE
102	1	BME-5484C767	VIB. TRANS., METRIX 5484C-767 4-20 MA OUTPUT, 24VDC, CSA
103	2	AAR-DNFT	WHITLOCK #DNFT-T-LED-P-S DIGITAL NO FLOW SWITCH (BY ARIEL).
104	1	AAR-K1024	ARIEL LUBE OIL COOLER, K-1024
105	1	BDR-C10	SLEEVE COUPLING, 1" DRESSER STYLE 90 STRAIGHT
106	2	BDR-C14	SLEEVE COUPLING, 1 1/2" DRESSER STYLE 90 STRAIGHT
107	3	BNI-T5610	BALL VALVE, NIBCO T560-CS-R-25 1" WI LATCHING HANDLE
108	2	BNI-T5604	BALL VALVE, NIBCO T560-CS-R-25 1/2" WI LATCHING HANDLE
109	2	BDR-C14L	SLEEVE COUPLING, 1 1/2" DRESSER STYLE 90 90EL
110	1	BKE-LCE9	LEVEL CONTROLLER WI SWITCH, KENCO LCE-9 CSA XP
120	1	BIR-AR0666	DIAPHRAGM PUMP, ARO CPQ2187A 1" NPT, ALUMINUM C/W SS VENT
130	2	BTW-062	THERMOWELL, 1/2" X 3/4" NPTM X 2-1/2" LONG 304SS U = 1"
131	2	BTR-30251	TI, TREND 33025 2-1/2" STEM BM 3" D DUAL 0-250 DEG. F
132	1	BKE-RS30	OIL TANK, KENCO 55G-36, 55 US GAL WI STAND & LEVEL GAUGE
150	1	XSIGHTGLASS	GAUGE GLASS, CLEAR ACRYLIC TUBING, BY SHOP
151	4	BNI-T5610	BALL VALVE, NIBCO T560-CS-R-25 1" WI LATCHING HANDLE
152	2	BBA-BF914	OIL FILTER, BALDWIN BF914 1" NPT WI BF915 ELEMENT
153	1	BDA-1TCN	SET TUBULAR GAUGE VLV, #1TC DANIEL, SWEET, 1/2" NPT, CS, 500#
154	1	BEN-200P2	OIL TANK INTEGRAL WITH CRANE RAIL
186	1	BNE-48T06	PISTON CHECK VALVE, 3/4" NPT NEWCO 48TFS2 800# WOG CS
188	1	NPN	T'COUPLE AI 2313-U-60"-K-6" c/w A34-040-260-316 T'WELL & 1/2" NPT COMPRESSION FTG
189	1	BWH-3NVS	NEEDLE VALVE, WHITEY S-1VS6, 3/8" TBG CS

© 1998 Enerflex Systems Ltd.
 REPRODUCTION OF ANY PORTION OF THESE MATERIALS WITHOUT THE EXPRESS WRITTEN CONSENT OF ENERFLEX SYSTEMS LTD. IS STRICTLY PROHIBITED. THESE MATERIALS SHALL NOT BE USED FOR ANY PURPOSE OTHER THAN THE REPAIR AND MAINTENANCE OF THE PRODUCTS TO WHICH THEY RELATE.

FILENAME:
 ISSUE#:
 LAST DRAWING SAVE DATE:

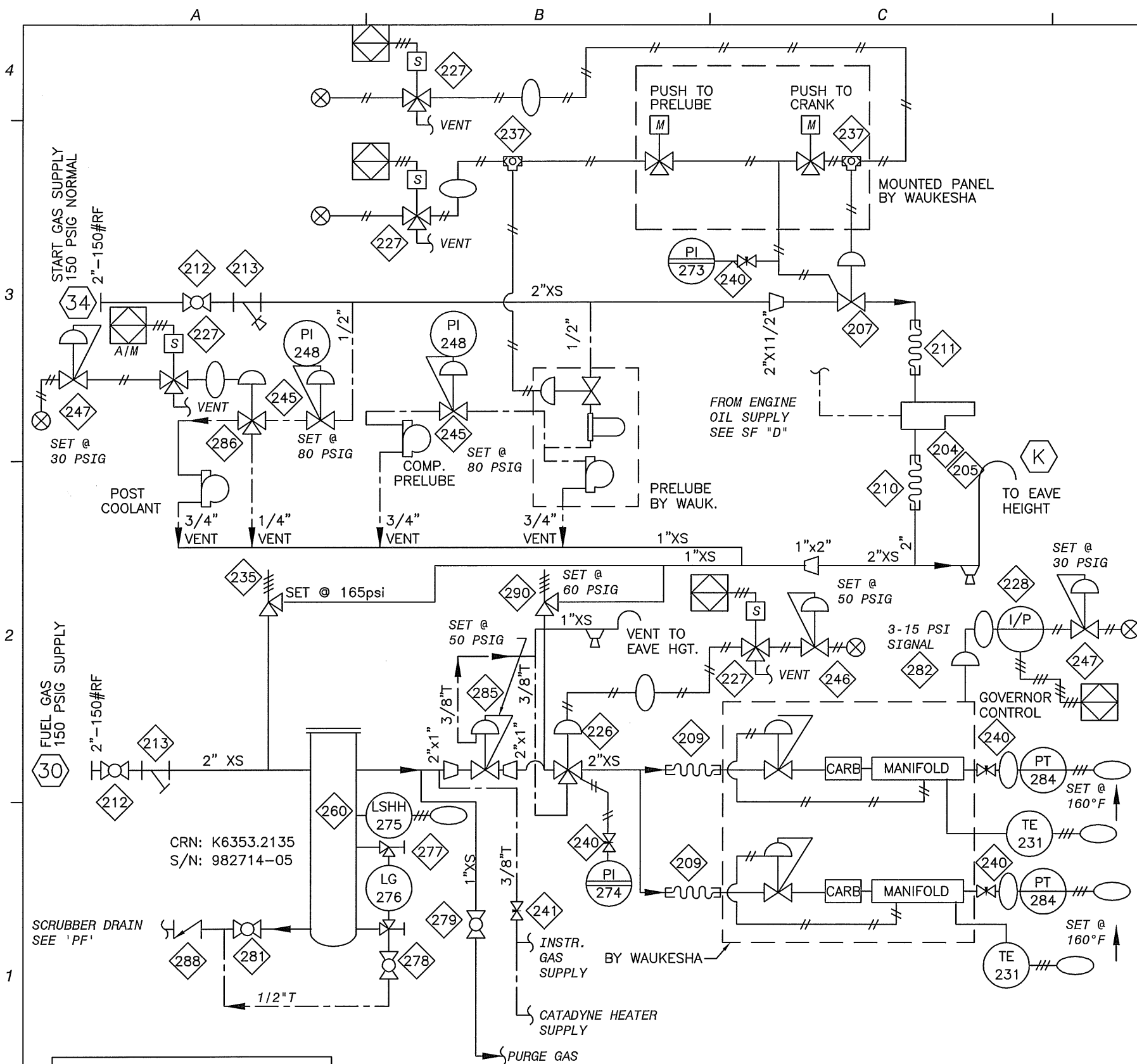


CUSTOMER:
SUNCOR
 (STOCK UNIT, ALBERTA)
 JOB No.: **97123**

Rev.	Description	By	Date
3	AS BUILT	MLA	98/05/26
2	REVISED AS NOTED	DB	98/05/06
1	FOR CONSTRUCTION	RCG	98/01/08
0	FOR APPROVAL	RCG	98/01/08

ORIG DWN BY: **D. Davidson**
 DATE: **97/10/17**
 APPR'D BY:
 DATE:

TITLE: **STANDARD SCHEMATIC EQUIPMENT & CONTROLS JGK/4, WAUKESHA L7042GL**
 DWG. **SF97123A** OPER'N#: **20**



BILL OF MATERIAL			
ITEM	QTY.	CODE No.	DESCRIPTION
204	1	BIR-810	STARTER, IR SS810GB03R31-31A
205	1	BIR-HDL2	LUBRICATOR, IR HDL-2
207	1	BIR-SRV150	GAS VALVE, 1-1/2" IR SRV-150
209	2	BBH-2012	BRAIDED STEEL HOSE, 2" NPTM ENDS, 12" LONG
210	1	BBH-2012	BRAIDED STEEL HOSE, 2" NPTM ENDS, 12" LONG
211	1	BBH-1412	BRAIDED STEEL HOSE, 1-1/2" NPTM ENDS, 12" LONG
212	2	BWK-13620	BALL VALVE, WKM B136-CS-02-CS HL 2" RP WI LATCHING HANDLE
213	2	BST-YSCS20	Y STRAINER, ALTA YS 600, CS, 2" NPT, 1480 PSIG, SS SCREEN
226	1	BAM-4418C3	GAS VALVE, AMOT 4418D6A6C0, 2" NPT, 3 WAY
227	4	ZNPN	SOLENOID, SNAPTITE, 3-WAY NC, 120 PSIG MAWP 24VDC 11 WATTS (BY EXACTA)
228	1	ZNPN	I/P TRANSDUCER, FAIRCHILD P/N CW 6509, 4-20MA INPUT, 6-30 PSI OUTPUT (BY EXACTA)
231	2	ZNPN	THERMOCOUPLE (BY WAUKESHA)
235	1	BME-8111	PSV, MERCER 8100 1" X 1" NPT, SET 165 PSIG, .212 OR.
237	2	BFE-668	SHUTTLE VALVE, FESTO 668-2 OS- 1/4" B, WI NPT ADAPTORS (9396)
240	4	BWH-2NVS	NEEDLE VALVE, WHITEY S-1VS4, 1/4" TBG CS
241	1	BWH-3NVS	NEEDLE VALVE, WHITEY S-1VS6, 3/8" TBG CS
245	2	BFI-64202	REG, FISHER 64-202, 35-100 PSI 1/4" ORIFICE, 1/2" NPT
246	1	ZNPN	REG, 1/4" FISHER #67AFR-226, 35-100 PSI, SET @ 50 PSIG (BY EXACTA).
247	2	ZNPN	REG, 1/4" FISHER #67AFR-362, 5-35 PSI (WO PI), SET @ 30 PSIG (BY EXACTA).
248	2	BWI-CB2C010	PI, WIKA 111.10, 2" BM 1/4" DUAL 0-100 PSI
260	1	BEN-FUL002	FILTER, 8-5/8" D, 2" NPT, 285 PSIG DWG #VE5.4002 FG-12 ELEM
273	1	BWI-P2S030	PI, WIKA 233.53, 2-1/2" LF 316 BT/STK PM 1/4" DUAL 0-300 PSI
274	1	BWI-P2S010	PI, WIKA 233.53, 2 1/2" LF 316 BT/STK PM 1/4" DUAL 0-100# PSI
275	1	BSO-1510B	LEVEL SWITCH, SOR, 2" NPT, SWEET #1510B-G2A-C-W9-ES-CS, 303 S/S
276	1	BDA-11TL	LVL GAUGE, DANIEL #11TL, SWEET CS WI TRANS. FLAT GLASS, 1935#
277	1	BDA-1S06	SET GAUGE VLV DANIEL #1S SWEET 3/4" NPT, CS, 3730#
278	1	BNU-T304	BALL VALVE, NUTRON T3F05S20B 1/2" FP CS WITH HANDLE
279	1	BNU-T310	BALL VALVE, NUTRON T3R10S20B 1" RP CS WITH HANDLE
281	1	BNU-T310	BALL VALVE, NUTRON T3R10S20B 1" RP CS WITH HANDLE
282	1	ZNPN	ACTUATOR, WESTINGHOUSE BY WAUKESHA
284	2	ZNPN	PRES TRANS WIKA 0 - 100 PSIG W1 CABLE (BY EXACTA)
285	1	BFI-627S450	REG, 1" FISHER 627-558 CS 1/2" OR 35-80# SPR SET 50# 150-750
286	1	BFI-164A	SWITCHING VALVE, FISHER 164A-1 3-WAY, 1/4", 5-35 PSI
288	1	BNE-48T10	PISTON CHECK VALVE, 1" NPT NEWCO 48TFS2 800# WOG
290	1	BFI-R180560	PSV, 1" FISHER 1805-14X1 20-125 PSI SET 60 PSI, CI BODY

© 1998 Enerflex Systems Ltd.
 REPRODUCTION OF ANY PORTION OF THESE MATERIALS WITHOUT THE EXPRESS WRITTEN CONSENT OF ENERFLEX SYSTEMS LTD. IS STRICTLY PROHIBITED. THESE MATERIALS SHALL NOT BE USED FOR ANY PURPOSE OTHER THAN THE REPAIR AND MAINTENANCE OF THE PRODUCTS TO WHICH THEY RELATE.

FILENAME: _____
 ISSUE#: _____
 LAST DRAWING SAVE DATE:
 96/12/31 09:44



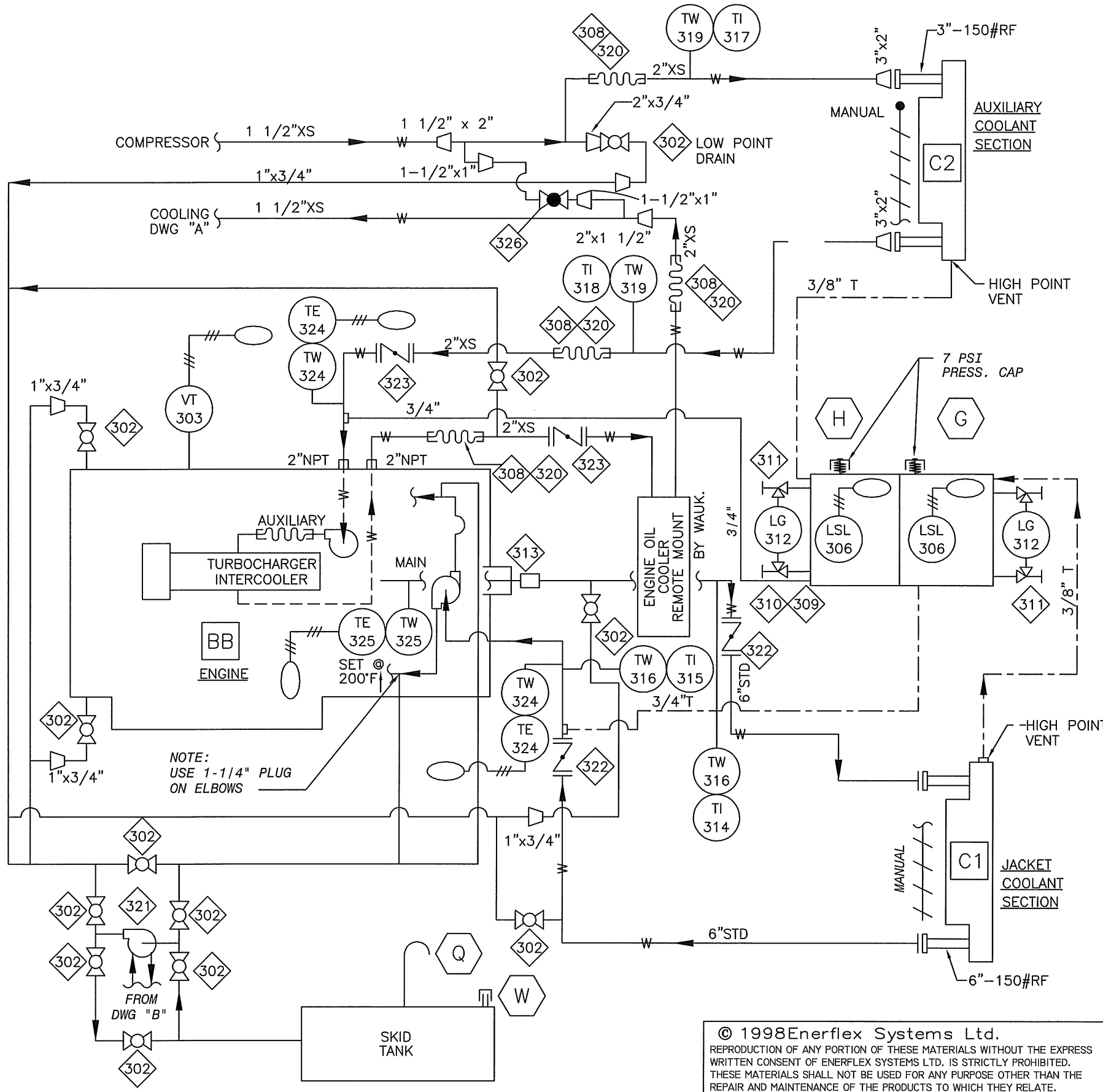
CUSTOMER:
 SUNCOR
 (STOCK UNIT, ALBERTA)
 JOB No.: 97123

Rev.	Description	By	Date
3	AS BUILT	MLA	98/05/26
2	REVISED AS NOTED	DB	98/05/06
1	FOR CONSTRUCTION	RCG	98/01/08
0	FOR APPROVAL	RCG	98/01/08

ORIG DWN BY: D. Davidson
 DATE: 97/10/17
 APPR'D BY: _____
 DATE: _____


TITLE: FUEL & START GAS
 WAUKESHA L7042GL
 DWG. SF97123B OPER'N#: 22

BILL OF MATERIAL

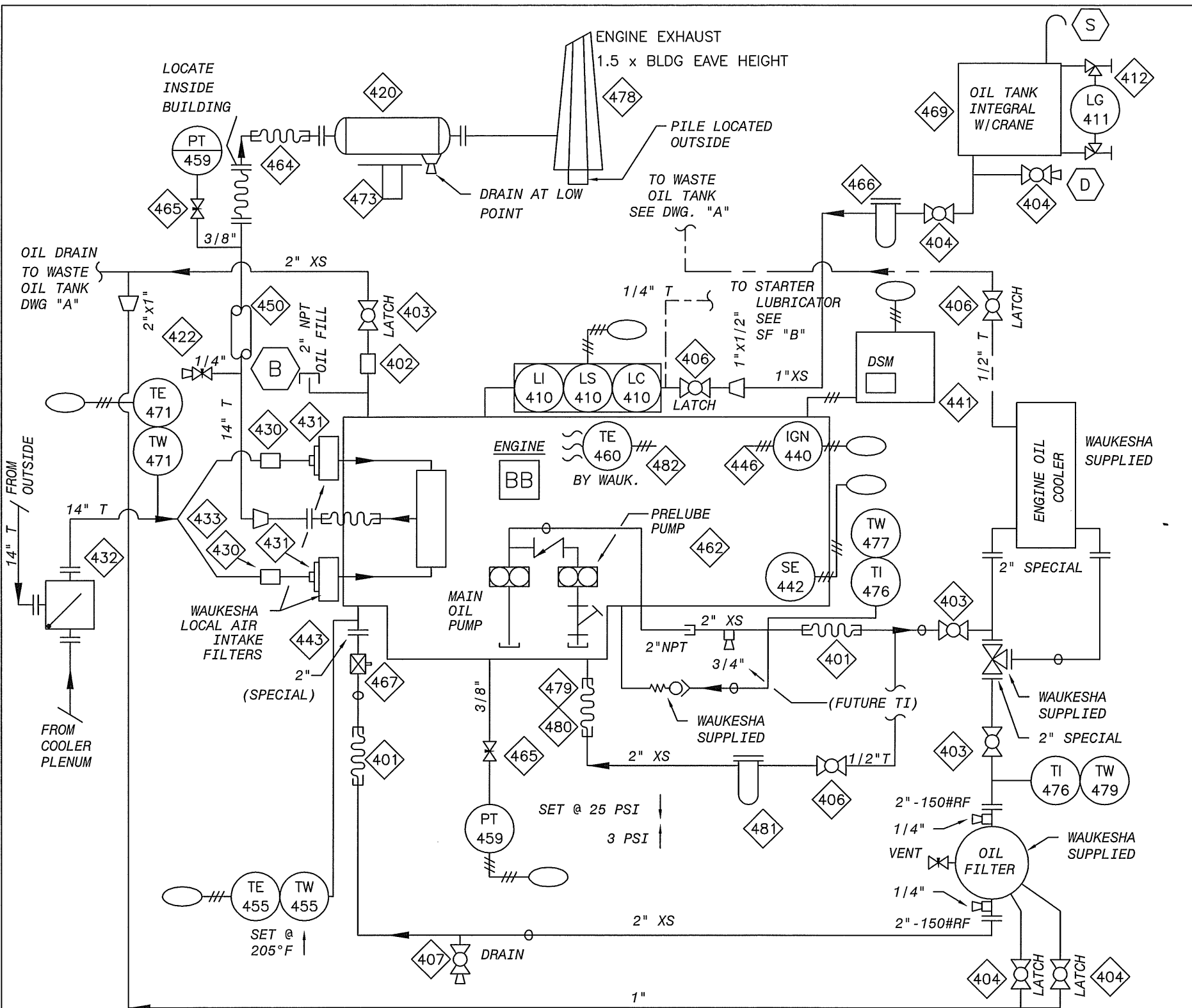


ITEM	QTY.	CODE No.	DESCRIPTION
302	12	BNI-T5606	BALL VALVE, NIBCO T560-CS-R-25 3/4" WI LATCHING HANDLE
303	1	BME-5484C767	VIB. TRANS., METRIX 5484C-767 4-20 MA OUTPUT, 24VDC, CSA
306	2	BSO-1510B	LEVEL SWITCH, SOR, 2" NPT, SWEET #1510B-G2A-C-W9-ES-CS, 303 S/S
308	4	CPH-2BPH	2" PETROLEUM HOSE, MAWP 150 PSI, BLUE
309	1	BEN-24404	SURGE TANK, TWO COMPARTMENT, 150/59L, DWG 24-404
310	1	BEN-08101A	BRACKET, COOLER-MOUNTED SURGE TANK DWG. #08.1390
311	2	BDA-1TCN	SET TUBULAR GAUGE VLV, #1TC DANIEL, SWEET, 1/2" NPT, CS, 500#
312	2	XSIGHTGLASS	GAUGE GLASS, CLEAR ACRYLIC TUBING, BY SHOP
313	1	BDR-C60	SLEEVE COUPLING, 6" DRESSER STYLE 38
314	1	BTR-30401	TI, TREND 33040 4" STEM BM 3" D DUAL 0-250 DEG. F JWIT
315	1	BTR-30401	TI, TREND 33040 4" STEM BM 3" D DUAL 0-250 DEG. F JWOT
316	2	BTW-064	THERMOWELL, 1/2" X 3/4" NPTM X 4" LONG 304SS, U = 2 1/2"
317	1	BTR-30251	TI, TREND 33025 2-1/2" STEM BM 3" D DUAL 0-250 DEG. F AWIT
318	1	BTR-30251	TI, TREND 33025 2-1/2" STEM BM 3" D DUAL 0-250 DEG. F AWOT
319	2	BTW-062	THERMOWELL, 1/2" X 3/4" NPTM X 2-1/2" LONG 304SS U = 1"
320	8	CPH-2MS	2" BOSS MALLEABLE IRON MALE STEM FOR PETROLEUM HOSE MS-26
321	1	BIR-AR0666	DIAPHRAGM PUMP, ARO CPQ2187A 1" NPT, ALUMINUM C/W SS VENT
322	2	BWA-61BF04	WATTS 6" 150# BF04-121-25 BUTTERFLY VALVE
323	2	BWA-21BF04	WATTS 2" 150# BF04-121-25 BUTTERFLY VALVE
324	2	NPN6-5518	T'COUPLE AI2313-U-60"-k-6" c/w A34-040-260-316 T'WELL & 1/2" NPT COMPRESSION FTG
325	1	ZNPN	THERMOCOUPLE (BY WAUKESHA)
326	1	BNE-28T10	GLOBE VALVE, 1" NPT NEWCO 28TFS2 800# WOG CS

© 1998 Enerflex Systems Ltd.
 REPRODUCTION OF ANY PORTION OF THESE MATERIALS WITHOUT THE EXPRESS WRITTEN CONSENT OF ENERFLEX SYSTEMS LTD. IS STRICTLY PROHIBITED. THESE MATERIALS SHALL NOT BE USED FOR ANY PURPOSE OTHER THAN THE REPAIR AND MAINTENANCE OF THE PRODUCTS TO WHICH THEY RELATE.

FILENAME:	ISSUE#:	 ENERFLEX SYSTEMS LTD.	CUSTOMER:	3 AS BUILT	TTS	98/05/26	ORIG DWN BY: D. Davidson	TITLE:	STANDARD SCHEMATIC COOLING SYSTEM WAUKESHA L7042GL
LAST DRAWING SAVE DATE:			SUNCOR (STOCK UNIT, ALBERTA)	2 REVISED AS NOTED	DB	98/05/06	DATE: 97/10/17		
96/12/31 07:55			JOB No.: 97123	1 FOR CONSTRUCTION	RCG	98/01/08	APPR'D BY:	DWG. SF97123C	OPER'N#: 24
				0 FOR APPROVAL	RCG	98/01/08	DATE:		
				Rev. Description	By	Date			

BILL OF MATERIAL



- NOTES:**
1. TE-460 BY WAUKESHA INCLUDES TE'S FOR 12 CYLINDER TEMPS, PLUS LH & RH EXHAUST PRE-TURBO TEMPS.
 2. DSM & CEC MOUNTED OFF ENGINE, WITH SEPARATE 24 VDC SUPPLY WIRE RUN.
 3. WAUKESHA SUPPLIED EXHAUST FLEX TO BE SUPPORTED FROM INTERCOOLER.
 4. OIL TANKS IN CRANE RAIL TO HAVE REPADS BETWEEN TANK & SUPPORT COLUMN. DO NOT USE SUPPORT COLUMN AS OIL SUPPLY LINE

ITEM	QTY.	CODE No.	DESCRIPTION
401	2	BBH-2012	BRAIDED STEEL HOSE, 2" NPTM ENDS, 12" LONG
402	1	BDR-C20	SLEEVE COUPLING, 2" DRESSER STYLE 90
403	3	BNI-T5620	BALL VALVE, NPT NIBCO T560-CS R-25 2" RP WI LATCHING HANDLE
404	4	BNI-T5610	BALL VALVE, NIBCO T560-CS-R-25 1" WI LATCHING HANDLE
406	3	BNI-T5604	BALL VALVE, NIBCO T560-CS-R-25 1/2" WI LATCHING HANDLE
407	1	BNI-T5606	BALL VALVE, NIBCO T560-CS-R-25 3/4" WI LATCHING HANDLE
410	1	BKE-LCE17	LEVEL CONTROLLER WI SWITCH, KENCO LCE-17 CSA XP
411	1	NPN	GAUGE GLASS, CLEAR ACRYLIC TUBING, BY SHOP.
412	1	BDA-1TCN	SET TUBULAR GAUGE VLV, #1TC DANIEL, SWEET, 1/2" NPT, CS, 500#
420	1	NPN	MUFFLER SILEX, JDT-14 TYPE ST END IN/OUT, HOSPITAL GRADE
422	1	BWH-2NVS	NEEDLE VALVE, WHITEY S-1VS4-AD 1/4" TBG CS C/W SS FERRULES
430	2	BDO-P11H10	RUBBER HUMP HOSE CONNECTOR, DONALDSON P11-1414, 10" STRAIGHT
431	2	BEN-26303	AIR FILTER ADAPTOR, 10" OD, AS PER DWG 26-303
432	1	BEN-26402	WARM AIR DRAW DAMPER, 14", AS PER DWG 26-402
433	1	BEN-26502	Y MANIFOLD, 10"x14", AS PER DWG 26-502
440	1	BIG-12CECP	PARTIAL CEC IGNITION FOR 12VHP P.N. C1WVHP12CEC-6E
441	1	ZNPN	DETONATION SENSING MODULE (BY WAUKESHA)
442	1	ZNPN	SPEED PICKUP ALTRONIC P/N CW6401 C/W CABLE P/N CW 6406 (BY EXACTA)
443	1	BEN-26601	OIL STRAINER ADAPTER BLOCK FOR 12 CYL VHP, AS PER DWG 26-601
446	12	ZNPN	SPARK PLUGS (BY WAUKESHA)
450	1	BEX-CF	EXH INS, ALUM CLAD CERAM FIBRE BATT WI GALV LNR & AIR RINGS
455	1	ZNPN	T'COUPLE (BY WAUKESHA)
459	2	NPN	PRES TRANS WIKA 0-100 PSIG (BY EXACTA) SHIPPED LOOSE
460	14	ZNPN	THERMOCOUPLE (BY WAUKESHA)
462	1	ZNPN	PUMP (BY WAUKESHA)
464	2	BEN-EF14	FLEX EXH CONN 14"-150# X 16.5" CS, DWG. #05.2021
465	2	BWH-3NVS	NEEDLE VALVE, WHITEY S-1VS6, 3/8" TBG CS
466	1	BBA-BF914	OIL FILTER, BALDWIN BF914 1" NPT WI BF915 ELEMENT
467	1	ZNPN	OIL STRAINER BY WAUKESHA
469	1	BEN-200P2	OIL TANK, INTEGRAL WITH CRANE RAIL
471	1	NPN	T'COUPLE AI2313-U-60"-K-10" c/w A34-075-260-316 T'WELL & 1/2" NPT COMPRESSION FITTING
473	1	XMUFFLERSTAN	AIR EXHAUST MUFFLER STAND
476	2	BTR-30251	TI, TREND 33025 2-1/2" STEM BM 3" D DUAL 0-250 DEG. F
477	2	BTW-062	THERMOWELL, 1/2" X 3/4" NPTM X 2-1/2" LONG 304SS U = 1"
478	1	NPN	EXHAUST STACK, SELF SUPPORTING, POLESYSTEMS, PER DWG MC97123K.
479	1	NPN	2" PETROLEUM HOSE, MAWP 150 PSI, BLUE (BY WAUKESHA)
480	2	ZNPN	2" BOSS MALLEABLE IRON MALE STEM FOR PETROLEUM HOSE MS-26 (BY WAUKESHA).
481	1	ZNPN	MICROSPIN OIL FILTRATION SYSTEM CODE 5112 (BY WAUKESHA)
482	1	ZNPN	PYRO HARNESS, VHP12 L-SERIES GL 60-PEXT/VHP12GL25, 25' LEADS BY ESL

© 1998 Enerflex Systems Ltd.
 REPRODUCTION OF ANY PORTION OF THESE MATERIALS WITHOUT THE EXPRESS WRITTEN CONSENT OF ENERFLEX SYSTEMS LTD. IS STRICTLY PROHIBITED.
 THESE MATERIALS SHALL NOT BE USED FOR ANY PURPOSE OTHER THAN THE REPAIR AND MAINTENANCE OF THE PRODUCTS TO WHICH THEY RELATE.

FILENAME: _____
 ISSUE#: _____
 LAST DRAWING SAVE DATE:
 96/12/31 07:59



CUSTOMER:
SUNCOR
 (STOCK UNIT, ALBERTA)
 JOB No.: **97123**

Rev.	Description	By	Date
3	AS BUILT	TTS	98/05/26
2	REVISED AS NOTED	DB	98/05/06
1	FOR CONSTRUCTION	RCG	98/01/08
0	FOR APPROVAL	RCG	98/01/08

ORIG DWN BY: **D. Davidson**
 DATE: **97/10/17**
 APPR'D BY: _____
 DATE: _____

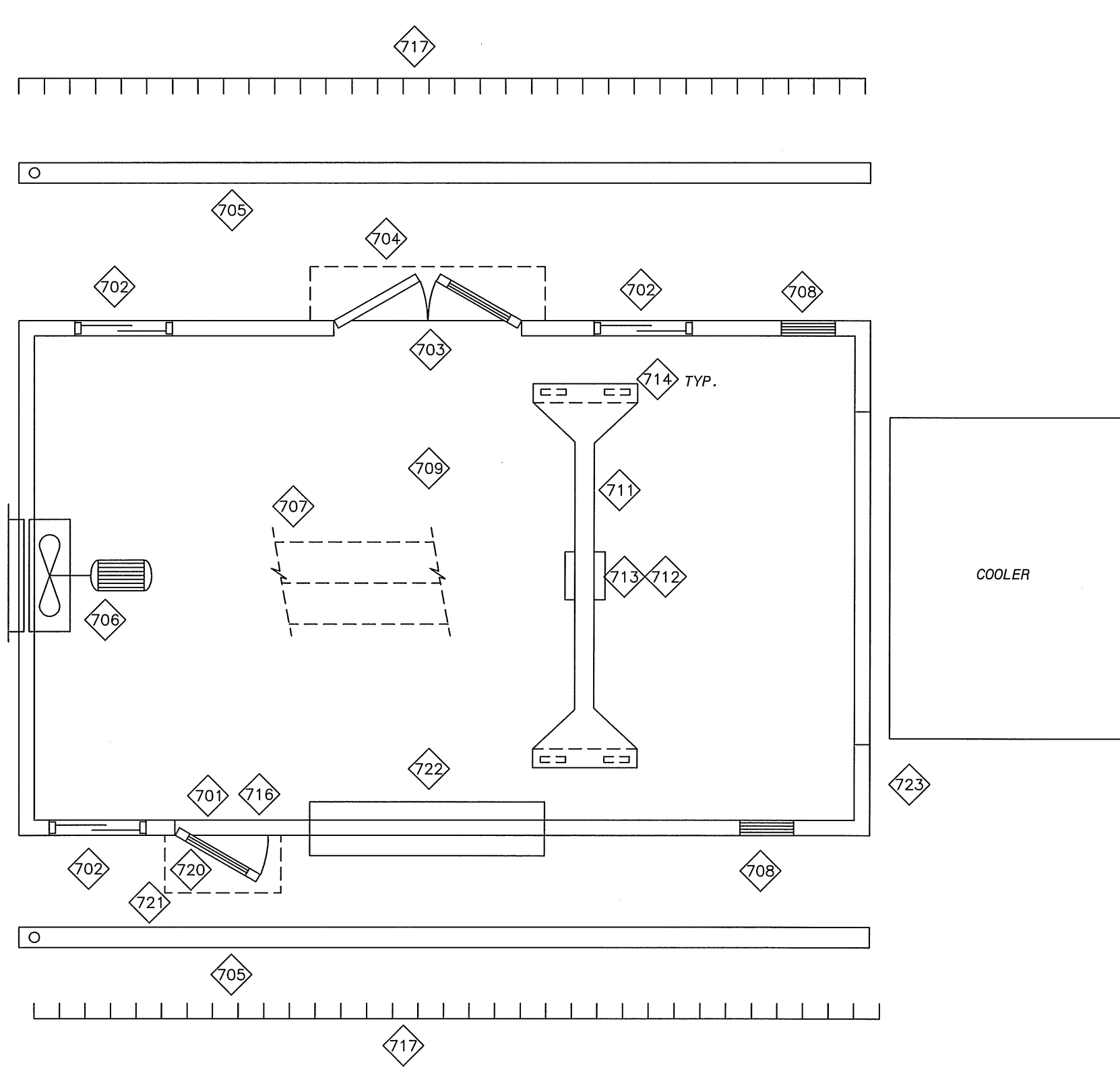
TITLE: **OIL, IGN., AIR & EXHAUST ENGINE EQUIPMENT & CONTROLS**
 WAUKESHA 7042GL
 DWG. **SF97123D** OPER'N#: **26**

NOTE :

1. SEE GENERAL ARRANGEMENT DRAWING FOR ACTUAL LOCATIONS OF BUILDING EQUIPMENT.
2. MOUNT 1 BUILDING FAN HIGH IN PEAK. MOUNT THE OTHER FAN LOW FOR H2S EVACUATION.

© 1998 Enerflex Systems Ltd.

REPRODUCTION OF ANY PORTION OF THESE MATERIALS WITHOUT THE EXPRESS WRITTEN CONSENT OF ENERFLEX SYSTEMS LTD. IS STRICTLY PROHIBITED. THESE MATERIALS SHALL NOT BE USED FOR ANY PURPOSE OTHER THAN THE REPAIR AND MAINTENANCE OF THE PRODUCTS TO WHICH THEY RELATE.



BILL OF MATERIAL

ITEM	QTY.	CODE No.	DESCRIPTION
	701	1 AXB-2PR4PRA	BLDG: 22 G PREPAINTED ST, 24 G PREPAINTED ALUM, R12 BATT INS
702	3	EBF-WDG	DOUBLE GLAZED 40" X 40" WINDOW C/W 1/2 SCREENS
703	1	EBF-DD	DBL MANDOOR 6' X 7'ST R4 INS IWG WINDOW CLOSER PAN HARDWARE, 1 WIND CHAIN
704	1	EBF-DCD	CANOPY OVER DOUBLE DOOR TO MATCH BLDG EXTERIOR
705	68	EBF-ET	LINEAL FEET OF EAVESTROUGHING, WITH DOWNSPOUTS,
706	2	NPN	12" XP WALL FAN, 12 ACPH
707	30	EBF-R06	LIN FT RIDGE VENT, 6" THROAT C/W MAN DAMP AND BIRD SCREEN, CHAIN OPERABLE
708	2	EBF-ML1830	LOUVRE, MAN ADJUSTABLE 18" X 30" WITH BIRD SCREEN, EXTR. ALUMINUM
709	1	NPN	ROOF INSULATION, R-12 FIBREGLASS BATT (GLAS-PLUS.)
711	1	BEN-2BC	2 TON RUNNING BRIDGE CRANE
712	1	BMH-2CH	2 TON MANUAL CHAIN HOIST #MCH5-020-10-8, INGERSOLL-RAND
713	1	BTR-2BT	2 TON BALL BEARING TROLLEY MODEL #PT020A, INGERSOLL-RAND
714	4	BFL-WC16RB	FLEXELLO WCI-6RB, 6" WHEEL, 2000# CAPACITY, 6" DIAx1-3/4" W, #CST6175RB
716	1	NPN	VAP BARR WALLS & ROOF AREA - 4 MIL GEN PUR POLY
717	68	EBF-IR	LINEAL FEET OF ICE RAKE
718	1	EBF-PENG	PROF. ENGINEER STAMP ON BUILDING DRAWING
720	1	NPN	SINGLE MANDOOR 3' X 7', 24 x 24 IWG, AUTO CLOSE
721	1	EBF-DCS	CANOPY OVER SINGLE DOOR TO MATCH BLDG EXTERIOR
722	1	NPN	ROLL UP DOOR, 10' X 9', INSULATED
723	1	ZNPN	WALL INSULATION R12 FIBERGLASS BATT GLASS PLUS (89mm)

COLOR SCHEDULE

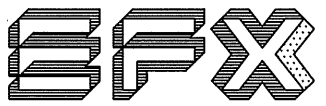
WALL INTERIOR LINER : 24 GAUGE FLUTED ALUMINUM-WHITE
 WALL EXTERIOR LINER : 22 GAUGE PREPAINTED STEEL SLATE BLUE
 ROOF INTERIOR LINER : 24 GAUGE ALUMINUM-WHITE
 ROOF EXTERIOR LINER : 22 GAUGE PREPAINTED STEEL-SLATE BLUE

TRIM : SURF WHITE
 COOLER : 906 SILVER BLUE
 EQUIPMENT : 906 SILVER GREY (STANDARD)
 SKID : 906 SILVER GREY (STANDARD)
 GRATING : BLACK (STANDARD)
 CRANE : YELLOW

DIMENSIONS

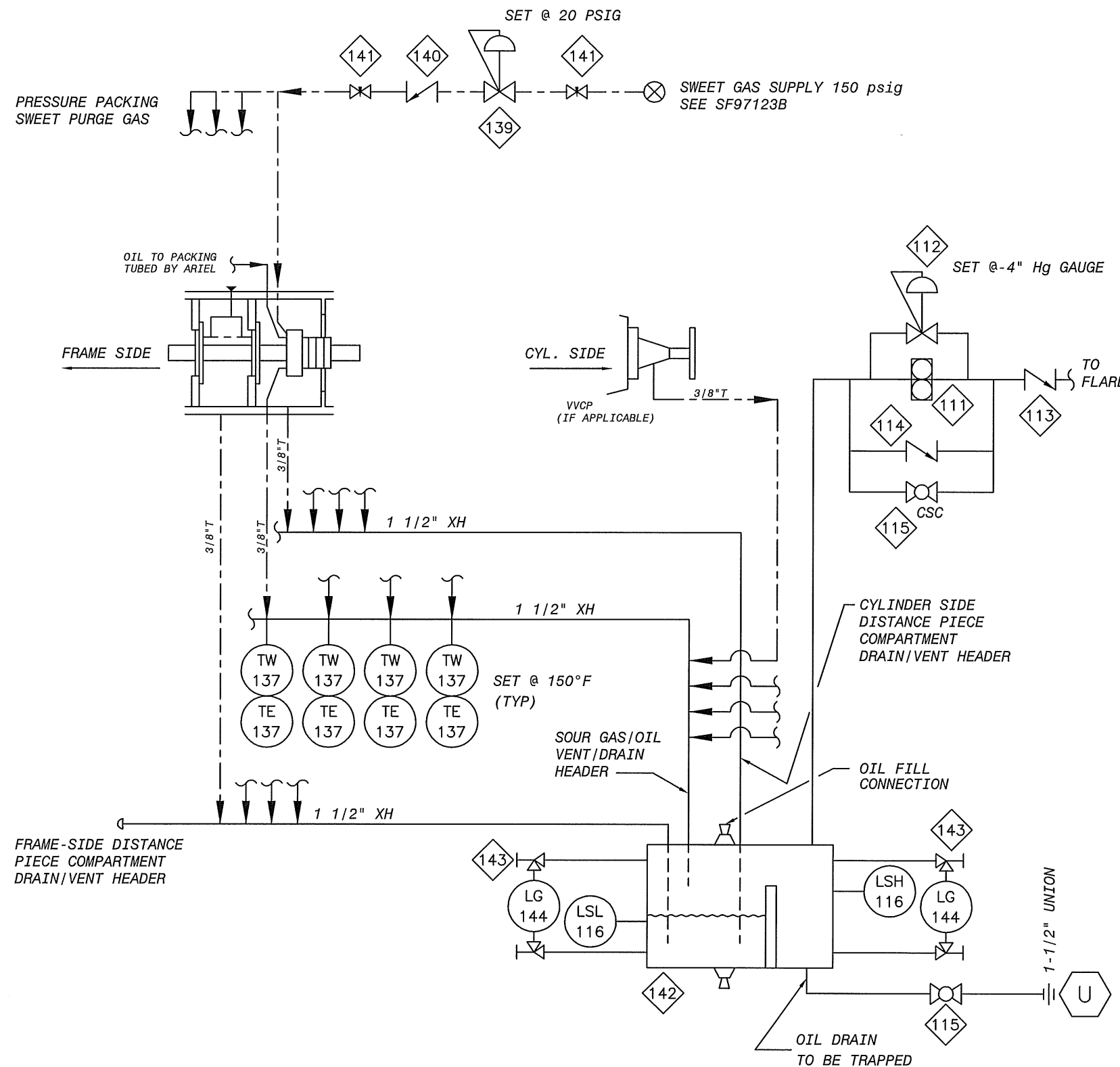
WIDTH : 22' - 0"
 LENGTH : 34' - 0"
 EAVE HEIGHT : 13' - 0"
 ROOF SLOPE : 4:12

BUILDING EQUIPMENT AND DETAILS

FILENAME:	ISSUE#:	 <p>ENERFLEX SYSTEMS LTD.</p>	CUSTOMER:	3	AS BUILT	TTS	98/05/26	ORIG DWN BY: L.HUYNH	TITLE: STANDARD SCHEMATIC
LAST DRAWING SAVE DATE:			SUNCOR (STOCK UNIT, ALBERTA)	2	REVISED AS NOTED	DB	98/05/06	DATE: 97/09/16	BUILDING EQUIP, ELEC & PAINT
97/09/16 08:34		JOB No.: 97123	1	FOR CONSTRUCTION	RCG	98/01/08	APPR'D BY:	DWG. SF97123G	OPER'N#: 70
			0	FOR APPROVAL	RCG	98/01/08	DATE:		
			Rev.	Description	By	Date			


BILL OF MATERIAL

ITEM	QTY.	CODE No.	DESCRIPTION
111	1	NPN	UTILE LGA12 ROTARY VANE GAS COMPRESSOR, c/w 1-1/2 HP, 460V/3Ph/ 60Hz 1200 RPM XP BALDOR MOTOR, 7 ACFM 2 4" Hg VACUUM
112	1	BFI-610	VAC BRKR, 1" FISHER Y610X5 CS SOUR 0-1.5" HG, SET 1" HG VAC
113	1	BNE-48T14	PISTON CHECK VALVE, 1-1/2" NPT NEWCO 48TFS2 800# WOG CS
114	1	NPN	IN-LINE RELIEF, NUPRO SS-CH16-F12-S SET @ 5 psig, 3/4" FNPT
115	2	BNU-T3X14	BALL VALVE, NUTRON T3F15S20S 1-1/2" RP NACE WI HANDLE
116	2	BSO-1510C	LEVEL SWITCH, SOR, 2" NPT, NACE #1510C-G2A-C-W9-ES-CSNC, 316SS
137	4	NPN	T'COUPLE AI2313-U-60"-K-6" c/w L34-025-260-316 T'WELLL & 1/2" NPT COMPRESSION FITTING
139	1	BFI-067	REG, 1/4" FISHER #67AFR-362, 5-35 PSI (WO PI)
140	1	BNU-SSCHS6	CHECK VALVE, NUPRO SS-CHS6-BU- 1/3, 1/3 PSI SS 3/8" T X 3/8" T
141	2	BNU-SS6P4T	PLUG VALVE, NUPRO SS-6P4T, 3/8" TUBE WITH SS PLUG
142	1	NPN	TANK, SEE DWG #MC97123D
143	2	BDA-1SN06	SET GAUGE VLV, DANIEL #1S-N, NACE, 3/4" NPT, CS, 3730#
144	2	BDA-11RMN	LVL GAUGE, DANIEL #11RM-N NACE CS WI REFLEX FLAT GLASS, 2900#



PACKING/DISTANCE PIECE PURGE, VENT & DRAIN SCHEMATIC

© 1998 Enerflex Systems Ltd.
 REPRODUCTION OF ANY PORTION OF THESE MATERIALS WITHOUT THE EXPRESS WRITTEN CONSENT OF ENERFLEX SYSTEMS LTD. IS STRICTLY PROHIBITED. THESE MATERIALS SHALL NOT BE USED FOR ANY PURPOSE OTHER THAN THE REPAIR AND MAINTENANCE OF THE PRODUCTS TO WHICH THEY RELATE.

FILENAME: _____ ISSUE#: _____

 LAST DRAWING SAVE DATE: 96/12/31 08:21
 ENERFLEX SYSTEMS LTD.

CUSTOMER: **SUNCOR**
 (STOCK UNIT, ALBERTA)
 JOB No.: **97123**

Rev.	Description	By	Date
3	AS BUILT	TTS	98/05/26
2	REVISED AS NOTED	DB	98/05/06
1	FOR CONSTRUCTION	RCG	98/02/09
0	FOR APPROVAL	DGD	97/10/17

ORIG DWN BY: **D. Davidson**
 DATE: **97/10/17**
 APPR'D BY: _____
 DATE: _____

TITLE: **SCHEMATIC COMPRESSOR EQUIP. AND CONTROLS PACKING VENT & DRAIN/DISTANCE PIECE**
 DWG. **SF97123H** OPER'N#: **20**

NOTE:
SUPPORT MEMBERS WITH BOLD LINES
ARE FOR CRANE SUPPORT ONLY, SEE
ELECTRICAL DRAWINGS.

COMPRESSOR UNBALANCED FORCES @ 1200 RPM

	PRIMARY	SECONDARY
HORIZONTAL FORCE, KIIPS	0.318	0.090
VERTICAL FORCE, KIIPS	0.00	0.00
HORIZONTAL COUPLE, KIIP-FT	16.715	0.168
VERTICAL COUPLE, KIIP-FT	16.882	0.00



CUSTOMER CONNECTIONS

NO.	DESCRIPTION	SIZE
1	STAGE ONE INLET	8" 300RFP
2	FINAL DISCHARGE	4" 300RFP
3	SCRUBBER DRAIN HEADER	1-1/2" 300RFP
4	FLY WENT HEADERS	2" 150RFP
5	FUEL GAS SUPPLY	2" 150RFP
6	START GAS SUPPLY	2" 150RFP

OTHER CONNECTIONS

CONN.	DESCRIPTION	SIZE
A	COMPRESSOR OIL FILL	2" NPT
B	ENGINE OIL FILL	2" NPT
C	COMPRESSOR OIL TANK FILL	1" NPT
D	ENGINE OIL TANK FILL	1" NPT
E	JACKET WATER (SURGE) FILL	2" 78 PRESS. CAP
F	AUXILIARY WATER FILL	2" 78 PRESS. CAP
G	START GAS VENT	2" PIPE
H	COMPRESSOR VENT	2" TUBE
I	PACKING/DISTANCE PIECE DRAIN TANK VENT	1-1/2" PIPE
J	WASTE OIL TANK VENT	2" PIPE
K	GLYCOL TANK VENT	2" PIPE
L	COMPRESSOR OIL TANK VENT	3/4" TUBE
M	ENGINE OIL TANK VENT	3/4" TUBE
N	PACKING/DISTANCE PIECE TANK PUMP OUT	1-1/2" UNION
O	WASTE OIL TANK PUMP OUT	2" NPT
P	GLYCOL TANK PUMP OUT	2" NPT
Q	INSTRUMENT AIR SUPPLY	1" 150RFP

MAJOR COMPONENTS

- AA COMPRESSOR
(1) AXEL, JK14
A1 (2) 9-1/8" DIA "K" CLASS CYLINDER, 1270 PSIG WAMP
A2 (2) 8-7/8" DIA "K" CLASS CYLINDER, 2000 PSIG WAMP
- BB ENGINE
(1) WAUKESHA, L7042GL
- CC COOLER
(1) AIR-X-CHANGERS 156H1
C1 (1) JACKET WATER SECTION, 14 PSIG WAMP @ 300°F
C2 (1) AUXILIARY WATER SECTION, 14 PSIG WAMP @ 300°F
C3 (1) INTERCOOLING SECTION, 1310 PSIG WAMP @ 300°F
C4 (1) AFTERCOOLING SECTION, 1600 PSIG WAMP @ 300°F
- DD SCHEMATIC
D1 (1) 18" DIA x 106" L, 655 PSIG WAMP @ 300°F, 1/8" C.A., PECO FILTER
D2 (1) 24" DIA x 90" L, 1270 PSIG WAMP @ 300°F, 1/8" C.A.
- EE BOTTLES
E1 (1) 20" DIA x 66" L, 655 PSIG WAMP @ 300°F, 1/8" C.A.
E2 (1) 18" DIA x 66" L, 1270 PSIG WAMP @ 300°F, 1/8" C.A.
E3 (1) 14" DIA x 66" L, 1270 PSIG WAMP @ 300°F, 1/8" C.A.
E4 (1) 12-3/4" DIA x 66" L, 1600 PSIG WAMP @ 300°F, 1/8" C.A.
- FF FUEL GAS FILTER
(1) ESI, STD 8-8/8"
- GG CONTROL PANEL
(1) EXACTA PANEL

GENERAL NOTES

- THIS DRAWING IS NOT TO BE USED FOR CONSTRUCTION UNLESS STAMPED "RELEASED FOR MANUFACTURE".
- DO NOT SCALE THIS DRAWING.
- ALL DIMENSIONS ARE IN MILLIMETERS.
- FOR DESIGN PARAMETERS AND PAINT SPECIFICATION REFER TO PROJECT SCOPE SUMMARY DRAWING NO. 887123.
- ALL PIPING MUST BE SELF-SUPPORTING BEYOND UNIT CONNECTIONS.
- LOCATIONS OF CUSTOMER CONNECTIONS ARE NOT QUANTIFIED AS THESE DIMENSIONS MAY BE SUBJECT TO AN ACCUMULATION OF TOLERANCES ON SEVERAL COMPONENTS. MINOR CHANGES MAY ALSO BE MADE ON SCHEMATIC BOTTLES PIPING IN ORDER TO FACILITATE INSTALLATION AND MAINTENANCE. ON COMPLETION A FINAL DRAWING WILL BE ISSUED WITH FIELD CONNECTIONS CORRECTED TO 6 mm.
- IT IS ESI'S RECOMMENDATION THAT ANY PRE-SPOOLING TO THIS COMPRESSOR PACKAGE CONTAIN FIELD WELDS AT ALL CUSTOMER CONNECTIONS.
- DIMENSIONS INDICATED (*) SHALL BE CONFIRMED AND CERTIFIED CORRECT (**) ON A FINAL REVISION.
- THE FOLLOWING ITEMS WILL BE SHIPPED LOOSE FOR FIELD INSTALLATION BY OTHERS:
MUFFLER
DOWNNEY STACK
COOLER
BOTTOM BLOCK VALVE
BOTTOM SPECTACLE BLIND
FINAL DISCHARGE BALL VALVE
FINAL DISCHARGE SPECTACLE BLIND

SHIPPING WEIGHTS		
	NO.	LEGS.
ENGINE	21000	21000
COMPRESSOR	7334	18158
VESSELS	5647	12450
SKID	29700	65450
LINCS & LIQUIDS	6804	15600
BUILDING	3674	8100
CRANE	2405	5300
SPOOLS	6355	14000
TOTAL WEIGHT MAIN SKID	71,500	157,500
COOLER	14,805	32,200
SHIPPED LOOSE ITEMS	3402	7500
TOTAL WEIGHT SHIPPED LOOSE ITEMS	17828	39300
TOTAL UNIT WEIGHT	107,500	236,500

UNIT DIMENSIONS	LENGTH		WIDTH		HEIGHT	
	mm	ft/in	mm	ft/in	mm	ft/in
MAIN SKID w/ ALL EQUIP. MOUNTED	14790	48' 9-7/8"	6706	22' 0"	7211	23' 7-15/16"
SHIPPING DIMENSIONS	11953	39' 2-3/4"	6706	22' 0"	6423	19' 5 3/16"
COOLER	3301	10' 10"	7828	25' 8-1/4"	4183	13' 8-11/16"

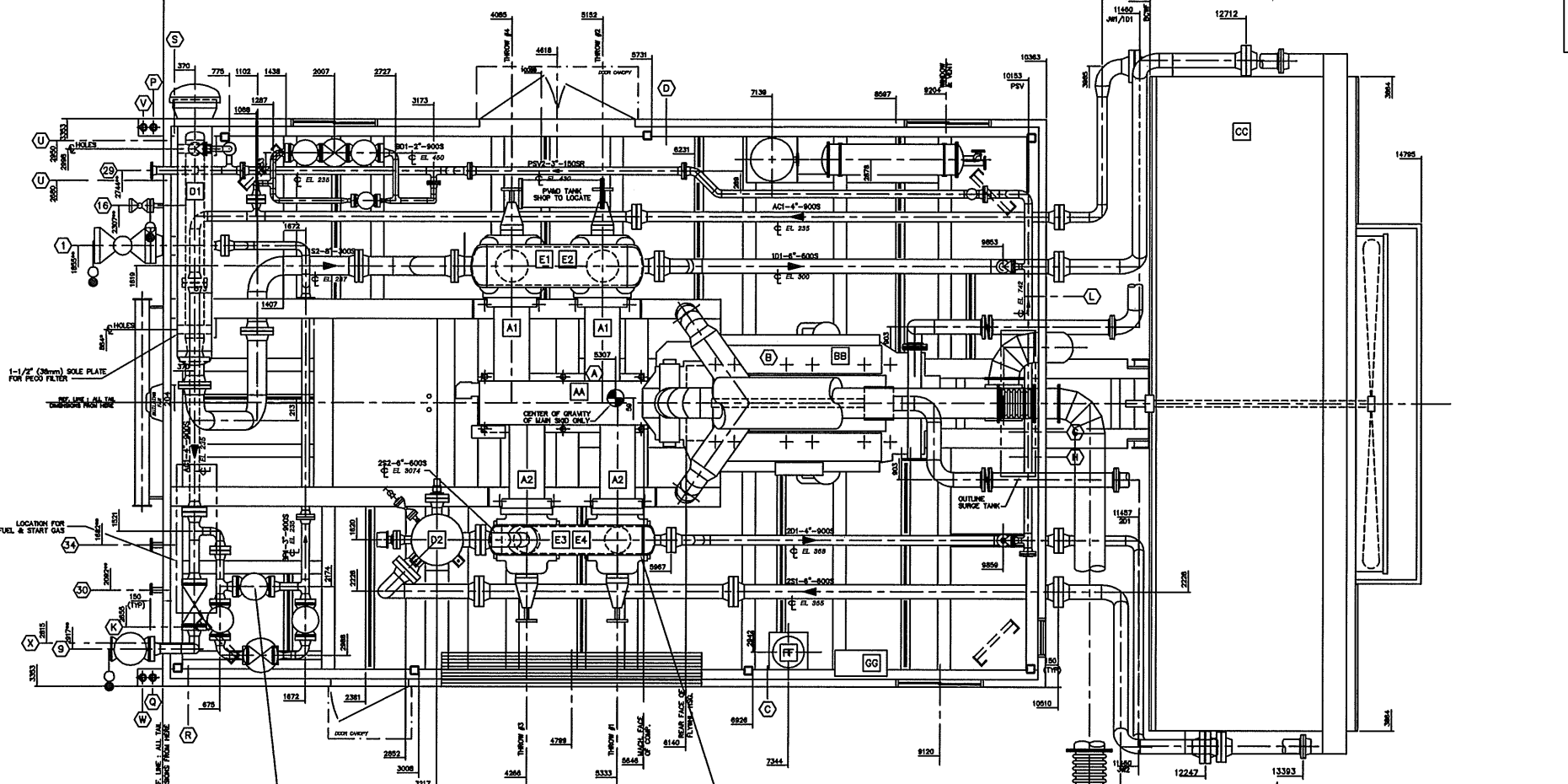
REV	DESCRIPTION	DATE	DRAWN BY	CHECKED BY
4	AS BUILT	06/06/01	BOG	BM
3	CHANGED B.O.P. ELEVATION FOR 1522 REVISION SKID SUPPORT MEMBERS UNDER BOTTLES SECTION	06/04/21	BOG	BM
2	CHANGED ALL 4" VES. SUPPORT MEMBERS TO 6" WERE FLD.	06/03/20	TRE	TL
1	FOR CONSTRUCTION	06/01/12	BOG	AB
0	FOR APPROVAL	06/01/12	BOG	AB

ENERFLEX Manufacturing
ENERFLEX SYSTEMS LTD. 4646, 76 Avenue S.E. Calgary, Alberta T2C 3C6
CHERRY BENTON ENERGY INC. 10000, 100th Avenue S.E. Calgary, Alberta T2C 3C6
SUNCOIL INC. (STOCK UNIT, ALBERTA) 10000, 100th Avenue S.E. Calgary, Alberta T2C 3C6

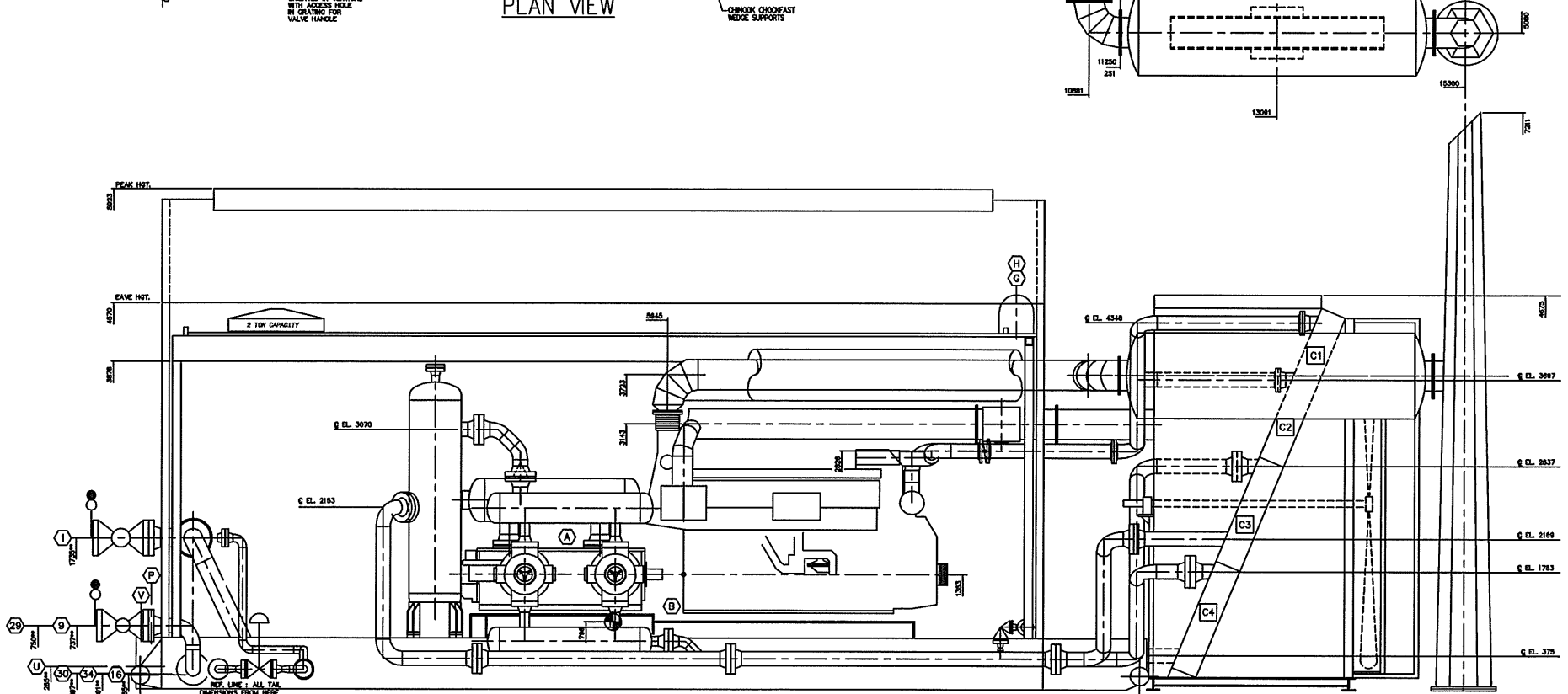
TITLE: GENERAL ARRANGEMENT
ARIEL JGK/4, WAUKESHA L7042GL, AIR-X-CHANGERS 156H COMPRESSOR PACKAGE

FOR: SUNCOIL INC. (STOCK UNIT, ALBERTA)
CONSULTANT: OSMI ENGINEERING LTD. 1522, 15th Avenue S.E. Calgary, Alberta T2C 3C6
LED: TBA
JOB No.: 07123

DATE: 06/01/12
SCALE: 1:25
DATE: 06/01/12
SCALE: 1:25



PLAN VIEW



ELEVATION VIEW

© 1998 Enerflex Systems Ltd.
REPRODUCTION OF ANY PORTION OF THESE MATERIALS WITHOUT THE EXPRESS WRITTEN CONSENT OF ENERFLEX SYSTEMS LTD. IS STRICTLY PROHIBITED.
THESE MATERIALS SHALL NOT BE USED FOR ANY PURPOSE OTHER THAN THE REPAIR AND MAINTENANCE OF THE PRODUCTS TO WHICH THEY RELATE.