

GENERAL NOTES:

1. UNIT TO BE INSTALLED BY CUSTOMER ON A LEVEL CONCRETE BASE W/ MIN. 1" GROUT UNDER ALL FULL DEPTH MEMBERS C/W DRAINAGE PROVISION AND GROUNDING.

2. APPROX. SHIPPING WEIGHT OF PACKAGE:   -  Lbs.

3. APPROX. OPERATING WEIGHT OF PACKAGE: 198,739 Lbs.

4. INDICATES CUSTOMER CONNECTION. SEE SCHEDULE

5. INDICATES REF. POINT. ALL ORDINATE DIMENSIONS TAKEN FROM THIS POINT.

6. INDICATES CLEAR AREA REQUIRED TO SERVICE EQUIPMENT.

7. "FACE" INDICATES FACE OF CUSTOMER CONNECTION. SEE SCHEDULE.
8. CUSTOMER PIPING IS TO BE FULLY AND TOTALLY SELF-SUPPORTING.

9. PIPING TO BE PER ANSI B31.3 LATEST EDITION.

10. INDICATES APPROXIMATE SHIPPING CENTER OF GRAVITY.

SHIPPING

"X"= -  
"Y"= -  
(ELEV.) "Z"= -

OPERATING

"X"= 208.00"  
"Y"= 80.10"  
(ELEV.) "Z"= 23.70"

Z

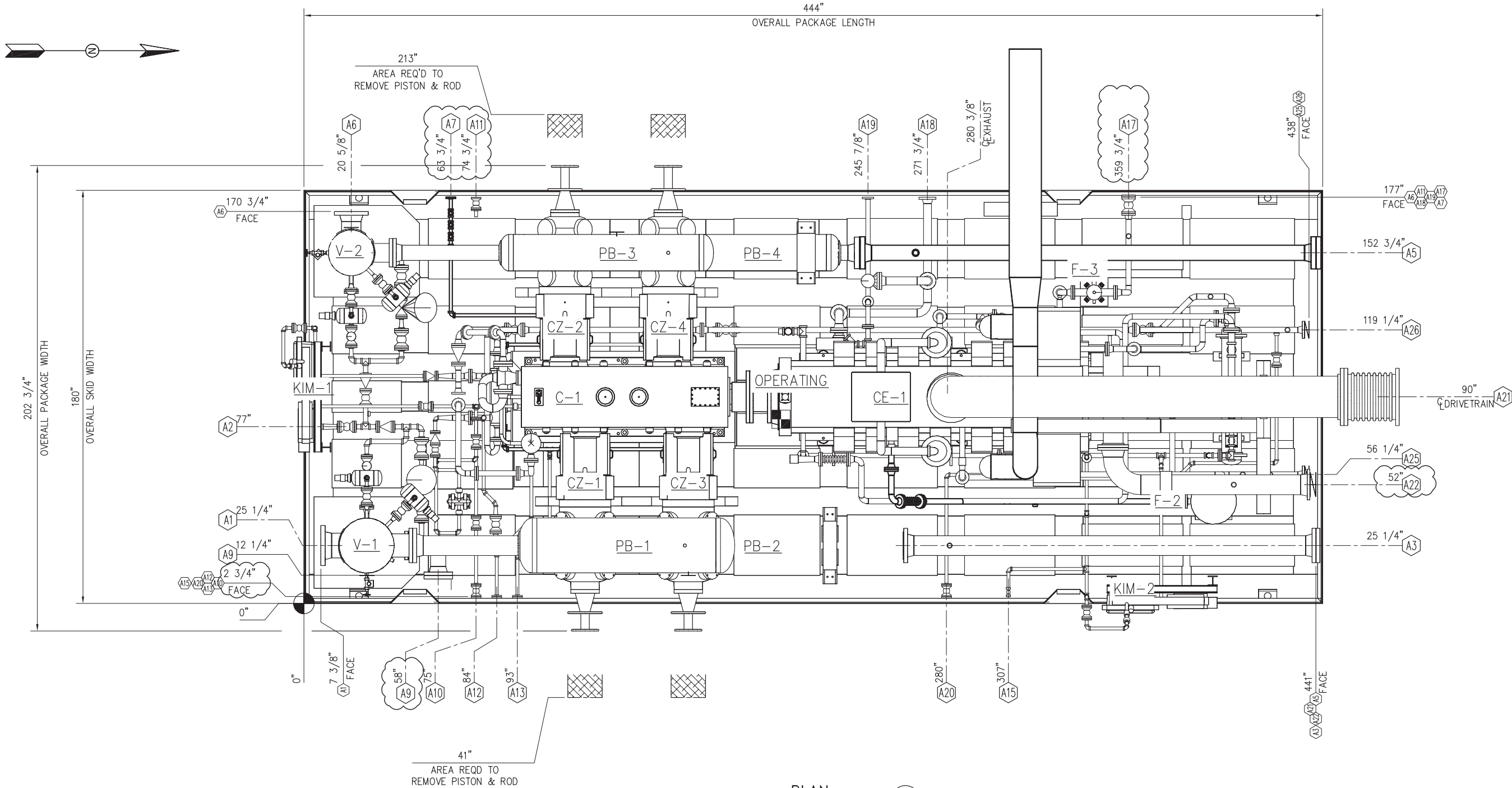
Y

X

11. SEE 23008-221 Sht. 1 FOR ANCHOR BOLT HOLES & JACKING BOLT LOCATIONS.



CUSTOMER CONNECTION SCHEDULE

MARK	DESCRIPTION	SERVICE	MARK	DESCRIPTION	SERVICE
A1	10"-300# RF FLANGE	PROCESS INLET, FROM CUSTOMER	A13	1"-150# RF FLANGE	PACKING VENT/DRAIN HEADER TO CUSTOMER
A2	2"-150# RF FLANGE	HYDROCARBON DRAIN TO CUSTOMER	A15	1"-FNPT	ENGINE LUBE OIL DRAIN TO CUSTOMER
A3	8"-300# RF FLANGE	DISCHARGE IC-1	A17	2"-150# RF FLANGE	FUEL GAS
A5	6"-600# RF FLANGE	DISCHARGE TO AC	A18	3"-150# RF FLANGE	START AIR EXHAUST TO CUSTOMER
A6	8"-300# RF FLANGE	GAS INLET FROM IC-1	A19	1 1/2"-150# RF FLANGE	START AIR FROM CUSTOMER
A7	1"-150# RF FLANGE	INSTRUMENT AIR FROM CUSTOMER	A20	1"-150# RF FLANGE	EJW/AUX WATER FILL & DRAIN
A9	6"-300# RF FLANGE	START UP BYPASS LINE	A21	8"-150# RF FLANGE	EJW OUTLET
A10	1"-150# RF FLANGE	COMPRESSOR LUBE OIL DRAIN	A22	8"-150# RF FLANGE	EJW INLET
A11	1" FNPT	COMPRESSOR LUBE OIL FAST FILL & MAKEUP	A25	3"-150# RF FLANGE	AUX WATER TO ENGINE
A12	1"-150# RF FLANGE	DISTANCE PIECE VENT/DRAIN HEADER TO CUST.	A26	3"-150# RF FLANGE	GLYCOL WATER FROM E-3



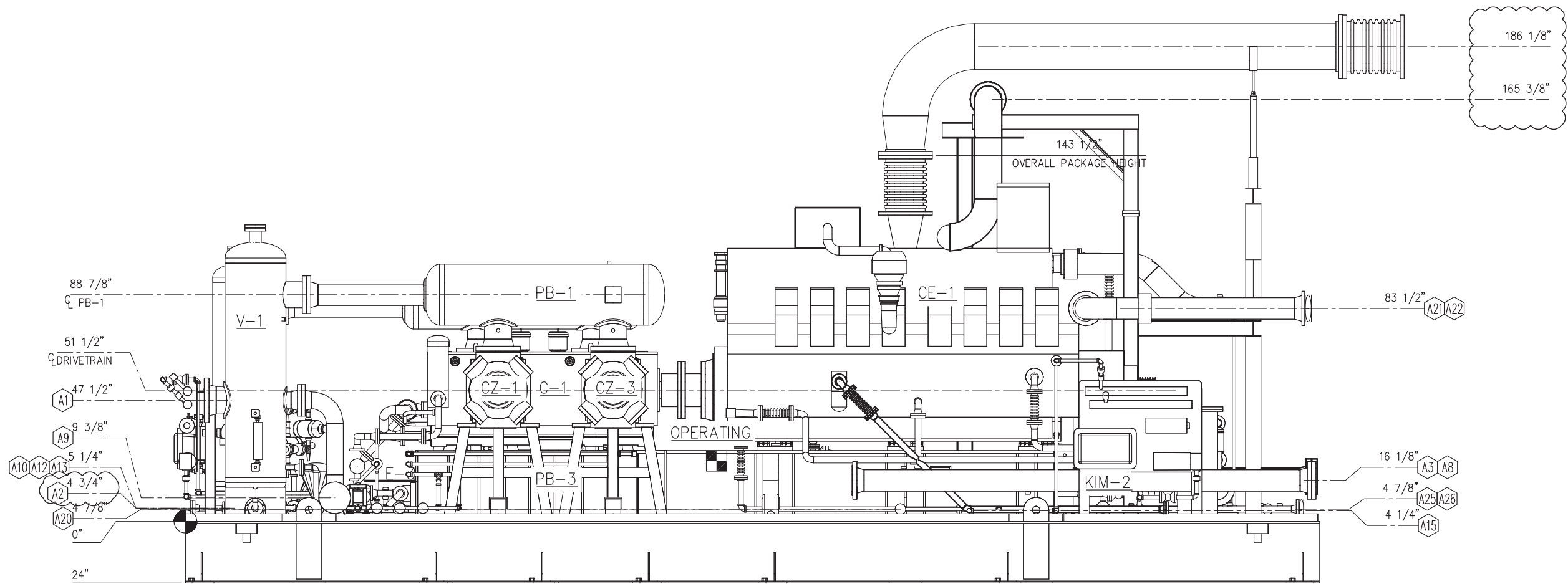
PLAN  
SCALE 1/2"=1'-0" 23008-201

FINAL  
AS BUILT  
NAME G. Montoya DATE 04/02/07

					DRAWN BY <i>G. Montoya</i>	DATE 01/23/07	FOR  DEVON GAS SERVICES, L.P. WEST JOHNSON COUNTY GAS PLANT INLET UNITS	 10815 TELGE ROAD HOUSTON, TEXAS	TITLE PACKAGE LAYOUT MODULE "A" RECIP. GAS COMPRESSOR		
4	FINAL AS BUILT	08/08/07	<i>SM</i>	<i>DB</i>	CHECKED BY <i>G. Montoya</i>	SCALE 1/2"=1'-0"				SHT 1 OF 4	REV 4
3	UPDATED C.O.G.	07/18/07	<i>SM</i>	<i>DB</i>	APPROVED BY <i>D. George</i>	WO NO					
2	PER CUSTOMER COMMENTS	04/03/07	<i>SM</i>	<i>DB</i>							
1	PER CUSTOMER COMMENTS	03/28/07	<i>JP</i>	<i>SM</i>							
REV	DESCRIPTION	DATE	BY	APR	CUST PO						

THE INFORMATION CONTAINED HEREIN IS THE CONFIDENTIAL PROPERTY OF TOROMONT PROCESS SYSTEMS AND IS NOT FOR PUBLICATION, AND NO PART THEREOF SHALL BE COPIED OR COMMUNICATED TO A THIRD PARTY WITHOUT AUTHORIZATION FROM TOROMONT PROCESS SYSTEMS.

PLOT DATE August 08, 2007



EAST  
SCALE 1/2" = 1'-0" 23008-201

**FINAL  
AS BUILT**  
NAME G. Montoya DATE 04/02/07

4	FINAL AS BUILT	08/08/07	SM	SB	DRAWN BY <u>G. Montoya</u>	DATE <u>01/23/07</u>
3	UPDATED C.O.G.	07/18/07	SM	SB	CHECKED BY <u>G. Montoya</u>	SCALE <u>1/2"=1'-0"</u>
2	PER CUSTOMER COMMENTS	04/03/07	SM	SB	APPROVED BY <u>D. Brange</u>	WO NO
1	PER CUSTOMER COMMENTS	03/28/07	JP	SM	CUST PO	
REV	DESCRIPTION	DATE	BY	APR		

DEVON GAS SERVICES, L.P.  
WEST JOHNSON COUNTY GAS PLANT  
INLET UNITS



10815 TELGE ROAD  
HOUSTON, TEXAS

DWG  
NO

23008-201

TITLE  
PACKAGE LAYOUT  
MODULE "A"  
RECIP. GAS COMPRESSOR

SHT

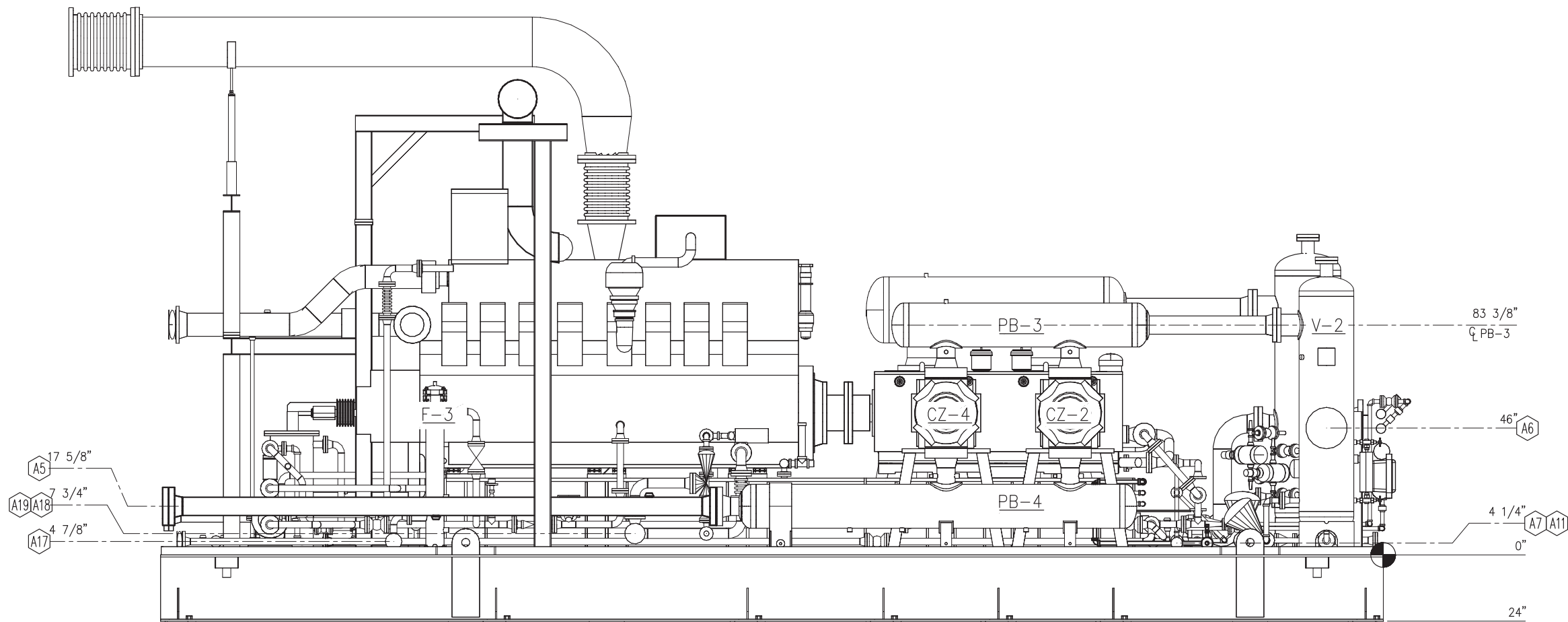
2 of 4

REV

4

THE INFORMATION CONTAINED HEREIN IS THE CONFIDENTIAL PROPERTY OF TOROMONT PROCESS SYSTEMS AND IS NOT FOR PUBLICATION, AND NO PART THEREOF SHALL BE COPIED OR COMMUNICATED TO A THIRD PARTY WITHOUT AUTHORIZATION FROM TOROMONT PROCESS SYSTEMS.

PLOT DATE August 08, 2007



WEST  
SCALE 1/2"= 1'-0" SHT. 2  
23008-201

**FINAL  
AS BUILT**  
NAME G. Montoya DATE 04/02/07

4	FINAL AS BUILT	08/08/07	SM	SB	DRAWN BY <u>G. Montoya</u>	DATE <u>01/23/07</u>
3	UPDATED C.O.G.	07/18/07	SM	SB	CHECKED BY <u>G. Montoya</u>	SCALE <u>1/2"=1'-0"</u>
2	PER CUSTOMER COMMENTS	04/03/07	SM	SB	APPROVED BY <u>D. Orange</u>	WO NO
1	PER CUSTOMER COMMENTS	03/28/07	JO	SM	CUST PO	
REV	DESCRIPTION	DATE	BY	APR		

DEVON GAS SERVICES, L.P.  
WEST JOHNSON COUNTY GAS PLANT  
INLET UNITS



10815 TELGE ROAD  
HOUSTON, TEXAS

DWG  
NO

23008-201

TITLE PACKAGE LAYOUT  
MODULE "A"  
RECIP. GAS COMPRESSOR

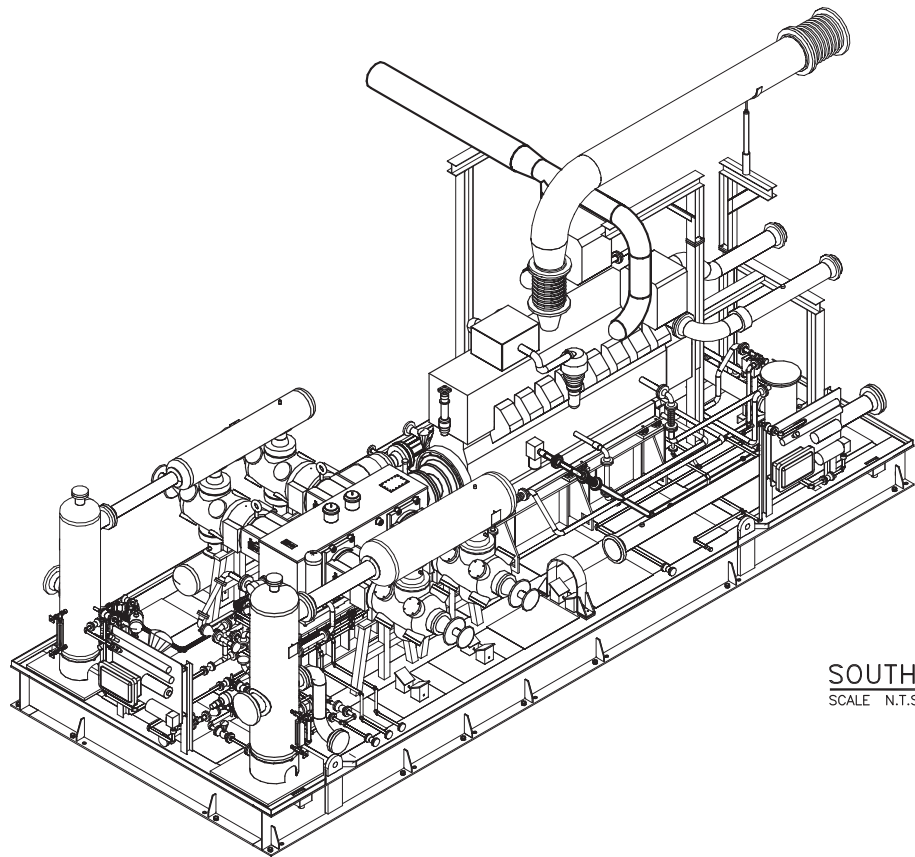
SHT

3 of 4

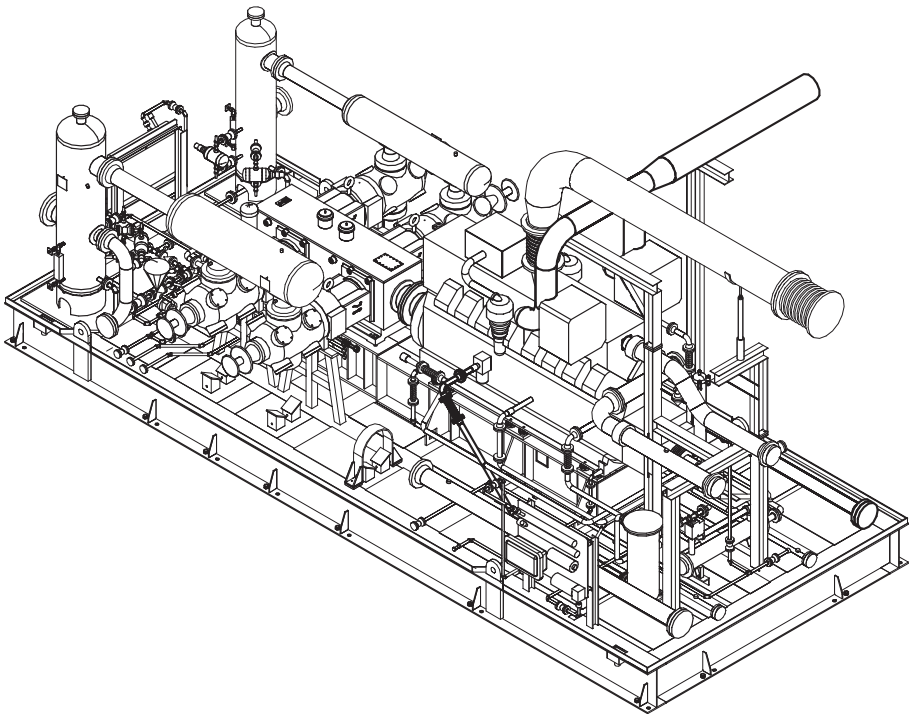
REV

4

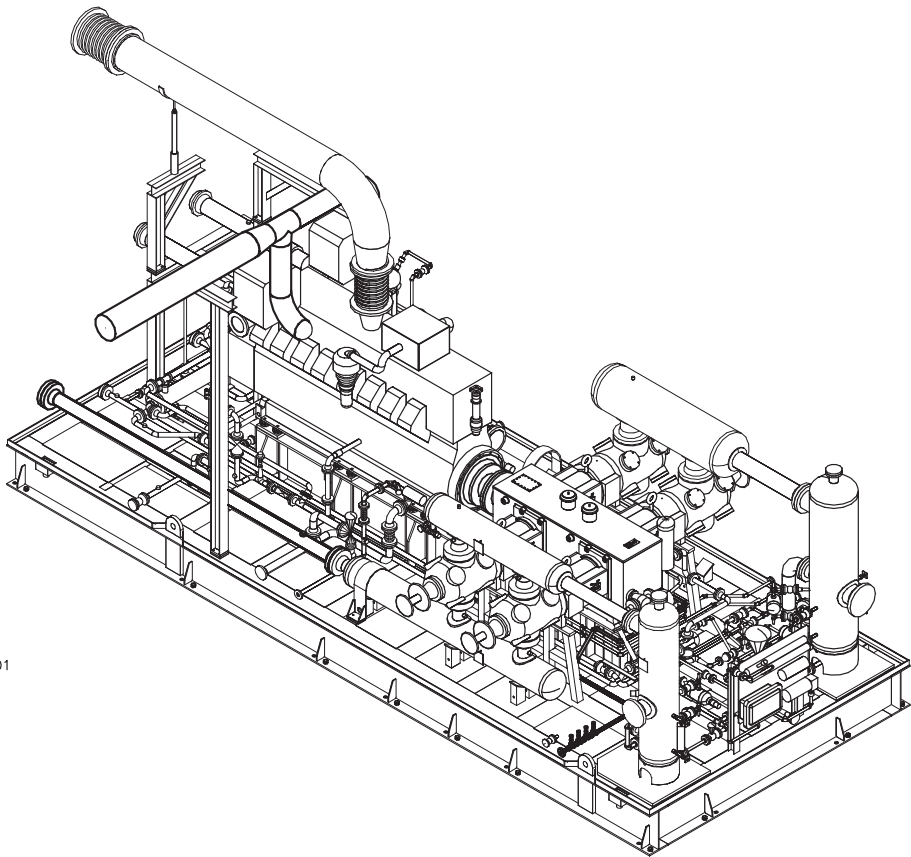
THE INFORMATION CONTAINED HEREIN IS THE CONFIDENTIAL PROPERTY OF TOROMONT PROCESS SYSTEMS AND IS NOT FOR PUBLICATION, AND NO PART THEREOF SHALL BE COPIED OR COMMUNICATED TO A THIRD PARTY WITHOUT AUTHORIZATION FROM TOROMONT PROCESS SYSTEMS.  
PLOT DATE: August 08, 2007



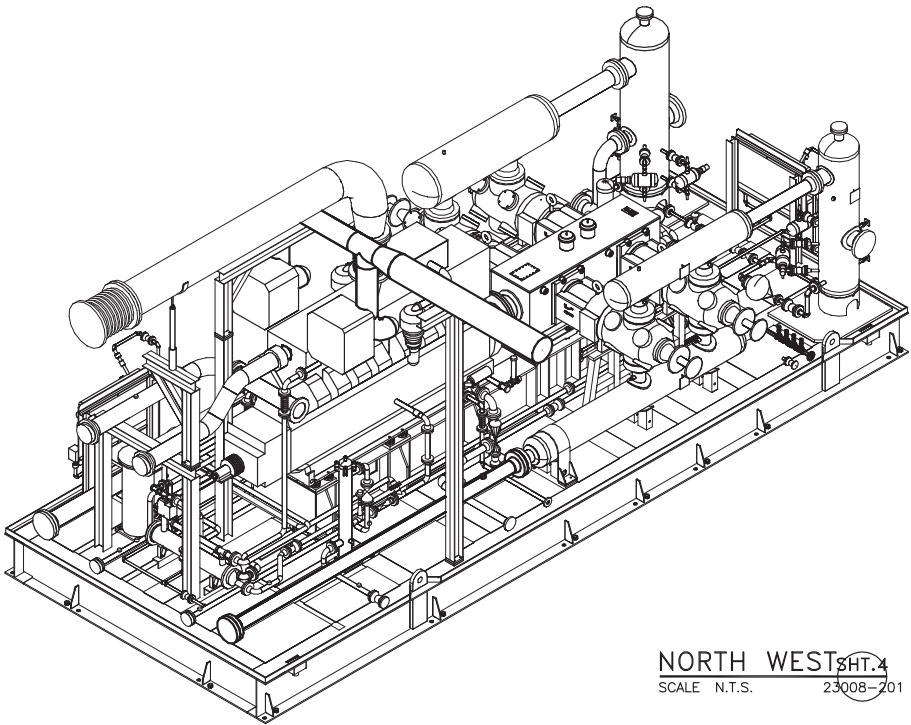
SOUTH EAST <sup>SHT. 4</sup>  
SCALE: N.T.S. 23008-201



NORTH EAST <sup>SHT. 4</sup>  
SCALE: N.T.S. 23008-201




SOUTH WEST <sup>SHT. 4</sup>  
SCALE: N.T.S. 23008-201



NORTH WEST <sup>SHT. 4</sup>  
SCALE: N.T.S. 23008-201

**FINAL  
AS BUILT**  
NAME G. Montoya DATE 04/02/07

					DRAWN BY <i>G. Montoya</i>	DATE 01/23/07	DEVON GAS SERVICES, L.P. WEST JOHNSON COUNTY GAS PLANT INLET UNITS	 10815 TELGE ROAD HOUSTON, TEXAS	TITLE PACKAGE LAYOUT MODULE "A" RECIP. GAS COMPRESSOR		
4	FINAL AS BUILT	08/08/07	<i>SM</i>	<i>SB</i>	CHECKED BY <i>G. Montoya</i>	SCALE NONE			DWG NO 23008-201	SHT 4 of 4	REV 4
3	UPDATED C.O.G.	07/18/07	<i>SM</i>	<i>SB</i>	APPROVED BY <i>D. George</i>	WO NO					
2	PER CUSTOMER COMMENTS	04/03/07	<i>SM</i>	<i>SB</i>	CUST PO						
1	PER CUSTOMER COMMENTS	03/28/07	<i>JP</i>	<i>SM</i>							
REV	DESCRIPTION	DATE	BY	APR							