

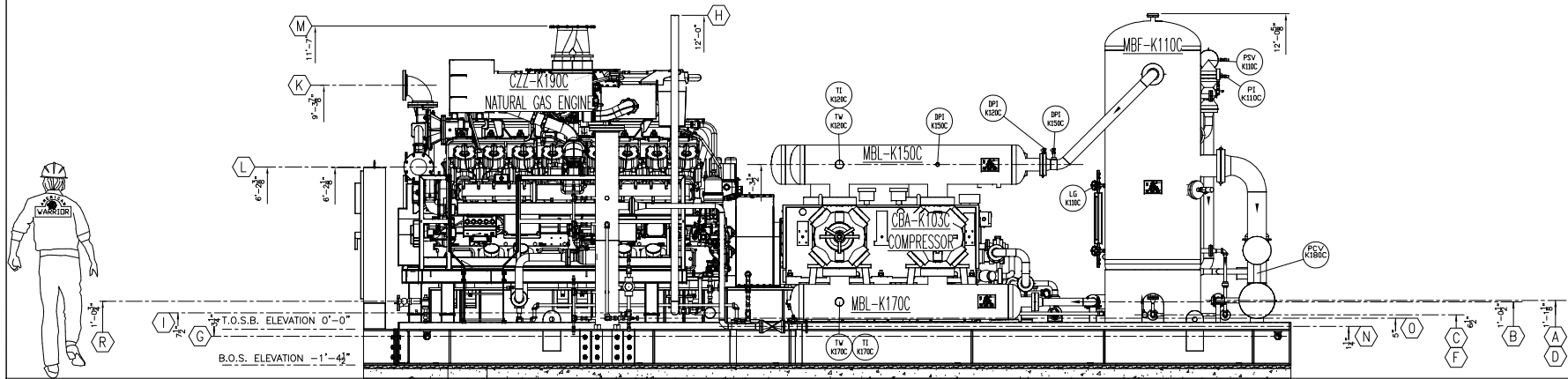
**PLAN VIEW**  
SCALE: 1/2"=1'-0"  
(GRATING REMOVED FOR CLARITY)

REVISION HISTORY	
NO.	DESCRIPTION
1	ISSUED FOR CUSTOMER APPROVAL
2	ISSUED FOR CONSTRUCTION
3	REVISED AS NOTED
4	REVISED AS NOTED
5	REVISED AS NOTED
6	AS BUILT

**CONNECTION SCHEDULE**

<b>A</b> 1ST STAGE INLET TO SCRUBBER 8" 600# RF	<b>F</b> INSTRUMENT AIR SUPPLY 1" 3000# NPT	<b>K</b> ENGINE JACKET WATER OUTLET 8" 150# RF	<b>P</b> ENGINE LUBE OIL SUPPLY 1" 3000# NPT	<b>U</b> TAW COOLER OUTLET 2 1/2" 150# RF
<b>B</b> 1ST STAGE OUTLET TO COOLER 6" 600# RF	<b>G</b> SKID CONTAINMENT DRAIN CONNECTION 2" 2000# NPT (TYP. 4)	<b>L</b> ENGINE JACKET WATER INLET 8" 150# RF	<b>Q</b> COMP LUBE OIL SUPPLY 1" 3000# NPT	
<b>C</b> 1ST STAGE SCRUBBER LIQUID OUTLET 1" 300# RF	<b>H</b> STARTER EXHAUST (TO ATMOS) 3" 150# RF	<b>M</b> EXHAUST 14" 150# RF	<b>R</b> ENGINE OIL DRAIN 2" 150# RF	
<b>D</b> RECYCLE FROM COOLER DISCHARGE 4" 600# RF	<b>I</b> STARTER SUPPLY 1 1/2" 150# RF	<b>N</b> FUEL GAS SUPPLY 2" 150# RF	<b>S</b> COMP OIL DRAIN 2" 3000# NPT	
<b>E</b> PSV VENT CONNECTION 4" 150# RF	<b>J</b> DRIP POT VENT 1" SCH 40 NPT	<b>O</b> FG SCRUBBER LIQUIDS 1" 3000# NPT	<b>T</b> TAW COOLER INLET 2 1/2" 150# RF	





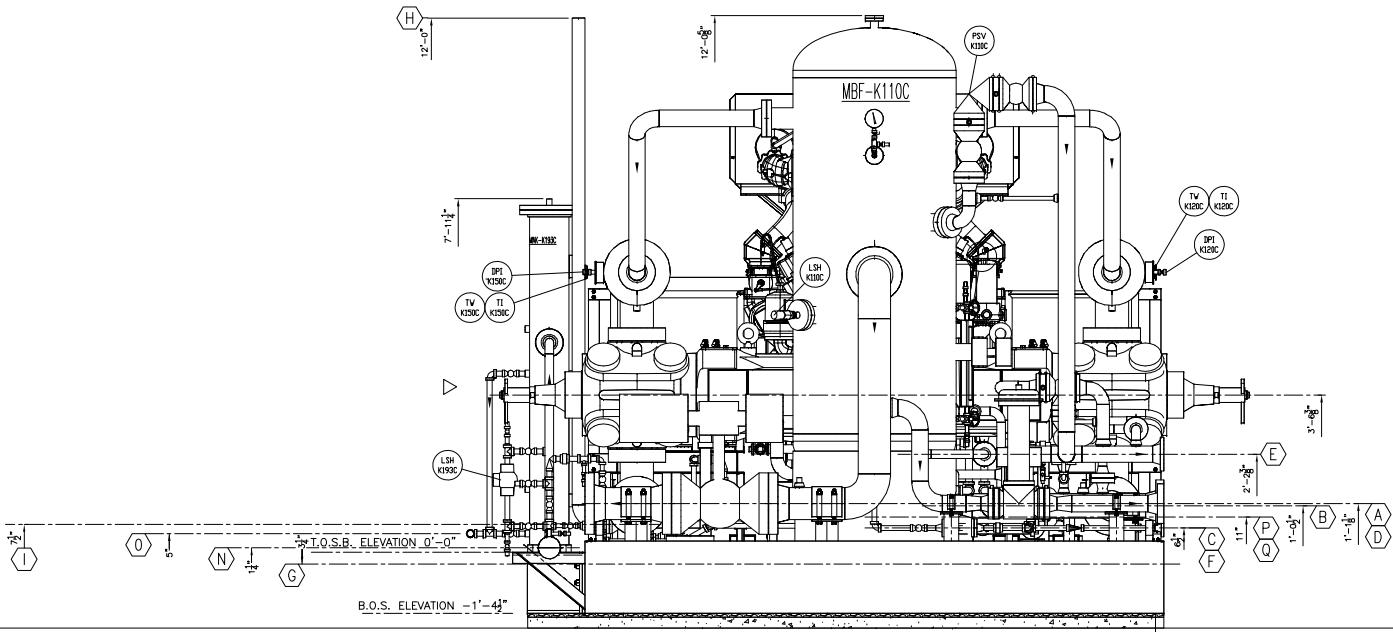
**SOUTH SIDE VIEW**

SCALE: 1/2"=1'-0"

REVISION HISTORY		DESCRIPTION
NO.	DATE	DESCRIPTION
1	6/13/17	ISSUED FOR CONSTRUCTION
2	6/13/17	ISSUED FOR CONSTRUCTION
3	6/21/17	ISSUED AS NOTED
4	3/25/18	ISSUED AS NOTED
5		ISSUED AS BUILT

**CONNECTION SCHEDULE**

<b>A</b> 1ST STAGE INLET TO SCRUBBER 8" 600# RF	<b>F</b> INSTRUMENT AIR SUPPLY 1" 3000# NPT	<b>K</b> ENGINE JACKET WATER OUTLET 8" 150# RF	<b>P</b> ENGINE LUBE OIL SUPPLY 1" 3000# NPT	<b>U</b> TANK COOLER OUTLET 2 1/2" 150# RF
<b>B</b> 1ST STAGE OUTLET TO COOLER 6" 600# RF	<b>G</b> SKID CONTAINMENT DRAIN CONNECTION 2" 2000# NPT (1HP, 4)	<b>L</b> ENGINE JACKET WATER INLET 8" 150# RF	<b>Q</b> COMP LUBE OIL SUPPLY 1" 3000# NPT	
<b>C</b> 1ST STAGE SCRUBBER LIQUID OUTLET 1" 300# RF	<b>H</b> STARTER EXHAUST (TO ATMOS) 3" 150# RF	<b>M</b> EXHAUST 14" 150# RF	<b>R</b> ENGINE OIL DRAIN 2" 150# RF	
<b>D</b> RECYCLE FROM COOLER DISCHARGE 4" 600# RF	<b>I</b> STARTER SUPPLY 1 1/2" 150# RF	<b>N</b> FUEL GAS SUPPLY 2" 150# RF	<b>S</b> COMP OIL DRAIN 2" 3000# NPT	
<b>E</b> PSV VENT CONNECTION 4" 150# RF	<b>J</b> DRIP POT VENT 1" SCH 40 NPT	<b>O</b> FG SCRUBBER LIQUIDS 1" 3000# NPT	<b>T</b> TANK COOLER INLET 2 1/2" 150# RF	



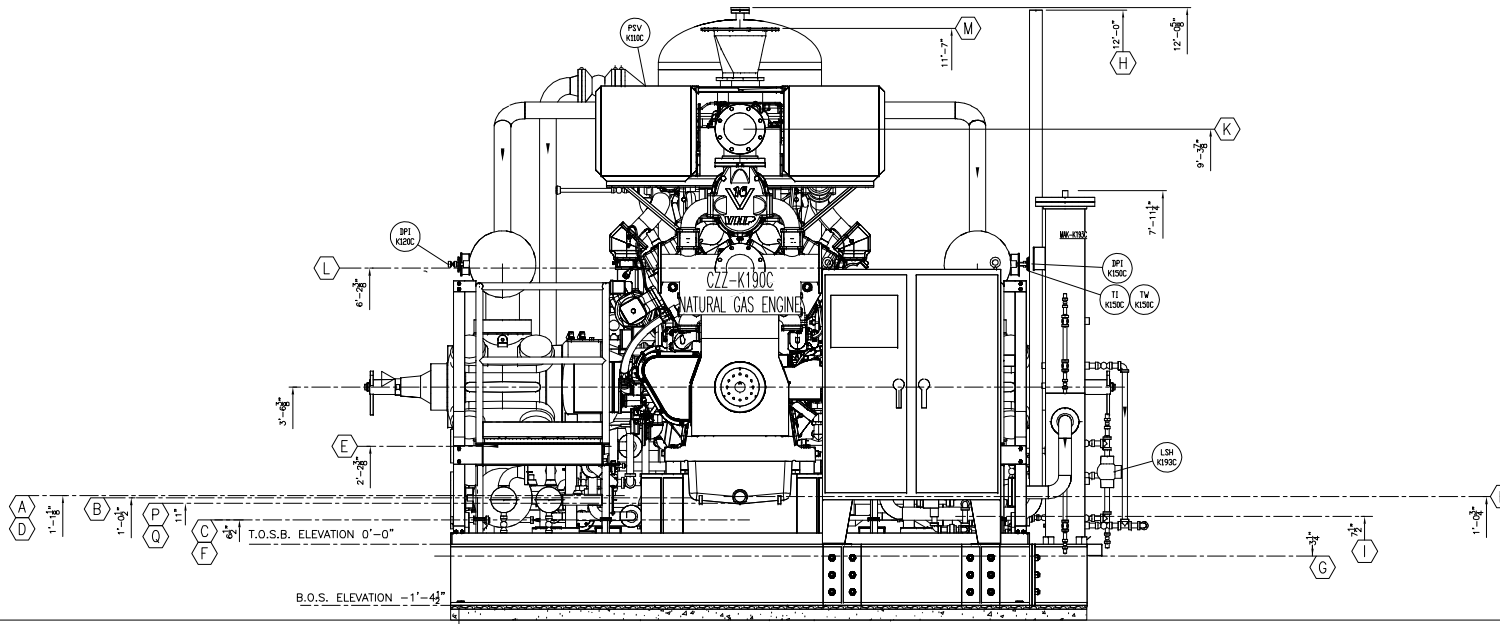
**EAST SIDE VIEW**

SCALE: 3/4"=1'-0"

**CONNECTION SCHEDULE**

<b>A</b> 1ST STAGE INLET TO SCRUBBER 8" 600# RF	<b>F</b> INSTRUMENT AIR SUPPLY 1" 3000# NPT	<b>K</b> ENGINE JACKET WATER OUTLET 8" 150# RF	<b>P</b> ENGINE LUBE OIL SUPPLY 1" 3000# NPT	<b>U</b> TANK COOLER OUTLET 2 1/2" 150# RF
<b>B</b> 1ST STAGE OUTLET TO COOLER 6" 600# RF	<b>G</b> SKID CONTAINMENT DRAIN CONNECTION 2" 2000# NPT (TYP. 4)	<b>L</b> ENGINE JACKET WATER INLET 8" 150# RF	<b>Q</b> COMP LUBE OIL SUPPLY 1" 3000# NPT	
<b>C</b> 1ST STAGE SCRUBBER LIQUID OUTLET 1" 300# RF	<b>H</b> STARTER EXHAUST (TO ATMOS) 3" 150# RF	<b>M</b> EXHAUST 14" 150# RF	<b>R</b> ENGINE OIL DRAIN 2" 150# RF	
<b>D</b> RECYCLE FROM COOLER DISCHARGE 4" 600# RF	<b>I</b> STARTER SUPPLY 1 1/2" 150# RF	<b>N</b> FUEL GAS SUPPLY 2" 150# RF	<b>S</b> COMP OIL DRAIN 2" 3000# NPT	
<b>E</b> PSV VENT CONNECTION 4" 150# RF	<b>J</b> DRIP POT VENT 1" SCH 40 NPT	<b>O</b> FG SCRUBBER LIQUIDS 1" 3000# NPT	<b>T</b> TANK COOLER INLET 2 1/2" 150# RF	

REVISION HISTORY		DESCRIPTION			
NO.	DATE	BY	CHK'D	APPROV'D	DESCRIPTION
1	5/13/17	SM	BP	BP	ISSUED FOR CUSTOMER REVIEW
2	6/13/17	SM	BP	BP	ISSUED FOR CONSTRUCTION
3	7/17/17	SM	BP	BP	REVISED AS NOTED
4	8/21/17	SM	BP	BP	REVISED AS NOTED
5	3/25/18	SM	BP	BP	AS BUILT



**WEST SIDE VIEW**

SCALE: 3/4"=1'-0"

**CONNECTION SCHEDULE**

<b>A</b> 1ST STAGE INLET TO SCRUBBER 8" 600# RF	<b>F</b> INSTRUMENT AIR SUPPLY 1" 3000# NPT	<b>K</b> ENGINE JACKET WATER OUTLET 8" 150# RF	<b>P</b> ENGINE LUBE OIL SUPPLY 1" 3000# NPT	<b>U</b> TAW COOLER OUTLET 2 1/2" 150# RF
<b>B</b> 1ST STAGE OUTLET TO COOLER 6" 600# RF	<b>G</b> SKID CONTAINMENT DRAIN CONNECTION 2" 2000# NPT (TYP. 4)	<b>L</b> ENGINE JACKET WATER INLET 8" 150# RF	<b>Q</b> COMP LUBE OIL SUPPLY 1" 3000# NPT	
<b>C</b> 1ST STAGE SCRUBBER LIQUID OUTLET 1" 300# RF	<b>H</b> STARTER EXHAUST (TO ATMOS) 3" 150# RF	<b>M</b> EXHAUST 14" 150# RF	<b>R</b> ENGINE OIL DRAIN 2" 150# RF	
<b>D</b> RECYCLE FROM COOLER DISCHARGE 4" 600# RF	<b>I</b> STARTER SUPPLY 1 1/2" 150# RF	<b>N</b> FUEL GAS SUPPLY 2" 150# RF	<b>S</b> COMP OIL DRAIN 2" 3000# NPT	
<b>E</b> PSV VENT CONNECTION 4" 150# RF	<b>J</b> DRIP POT VENT 1" SCH 40 NPT	<b>O</b> FG SCRUBBER LIQUIDS 1" 3000# NPT	<b>T</b> TAW COOLER INLET 2 1/2" 150# RF	

REVISION HISTORY		DESCRIPTION			
NO.	DATE	BY	CHK'D	APPROV'D	ISSUED FOR
0	6/13/17	SPK	SPK	SPK	ISSUED FOR CONSTRUCTION
1	7/17/17	SPK	SPK	SPK	REVISED AS NOTED
2	8/21/17	SPK	SPK	SPK	REVISED AS NOTED
3	8/21/17	SPK	SPK	SPK	REVISED AS NOTED
4	3/25/18	JMH	SPK	SPK	AS BUILT

