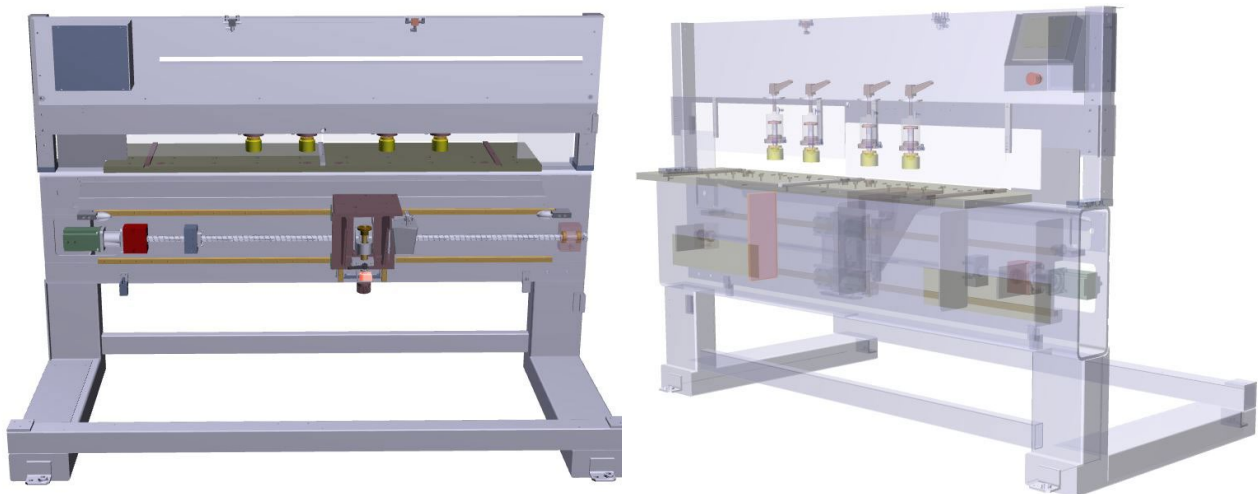




OMAL VELOX 1300 Horizontal Bore and Dowel Machine

Base Design and Construction

OMAL machines are built for maximum durability. The frame is constructed with 10 mm thick tubular steel which is internally welded and gusseted every 400mm for strength and rigidity. It is then heat treated and cooled slowly to make a stress-free, reliable machine.



Machine Operation

ELCO Top 7 Touchscreen Interface

The Velox machine is equipped with a touchscreen HMI and user friendly software. Programmable dowel layout is managed by the editor software included on the HMI. Programs can be written parametrically and are generated using graphical icons (drill, glue, dowel check boxes). The selection of the offset of tools for inserting and for operations on different left and right hand references is automatic.

The machine is programmable in the X axis and equipped with precision brushless motor, ball nut and ball screw for quick positioning. The movement of the carriage is on linear rails with square guides.

The software has a list manager that allows different parts to be run in each field and to control the production sequence. Lists can be saved for future reference plus the machine can be controlled by bar code list and/or program names.

The Velox 1300 is manufactured by OMAL under contract for SCM Group North America.



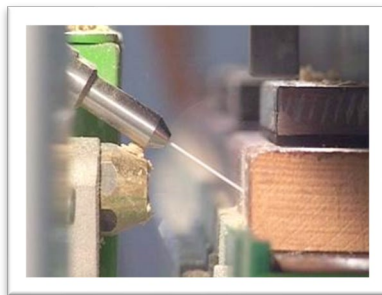
Machine Configuration

Drill-Glue-Dowel Reference:

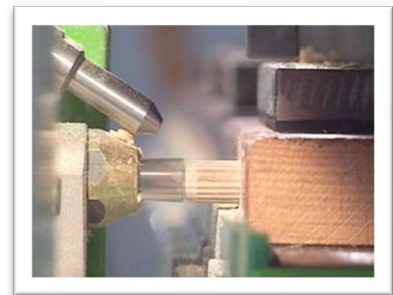
The Velox 1300 Horizontal Bore, Glue, and Dowel machine is a numerically controlled machine to drill, glue and insert dowels on horizontal pieces with **FOUR** loading zones.



BORE



GLUE



DOWEL

Cycle time of approximately **ONE** second for each bore, glue, and dowel insertion when holes are on **64** mm intervals!!

The high pressure glue injection system insures a no-drip glue or water delivery system with electronic precision metering.



Z-Axis Adjustment for Varying Thicknesses



Glue and Dowel Injection Unit

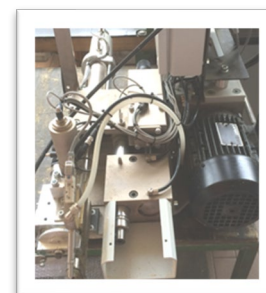
The machine is equipped standard with a single drill and piggyback glue and dowel insertion unit with standard set up for 8mm dowels. The selection of the loading zone (left, left center, right center, or right) is executed by CNC. When needed, the Z axis adjustment includes a digital readout for a precise, quick changeover between material thickness.

The dowel insertion revolver holds a dowel while a dowel is inserted plus checks via fiber optic sensor to see if next dowel is present to prevent misfeeds. The OMAL "SURE SHOT" revolver system guarantees a dowel is inserted every time!

Machine Specifications:

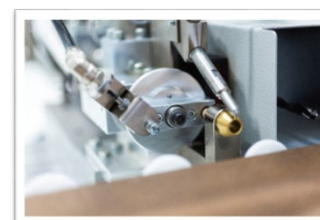
Drilling unit:

- | | |
|-------------------------|--------------|
| • N° of drilling units | 1 |
| • Drill motor kw/Hp | 0.55 / 0.75 |
| • Drills rotation speed | 6000 rpm |
| • Max depth of holes | 30mm (1.18") |
| • Max diameter of drill | 10mm (3/8") |



Dowel insertion unit:

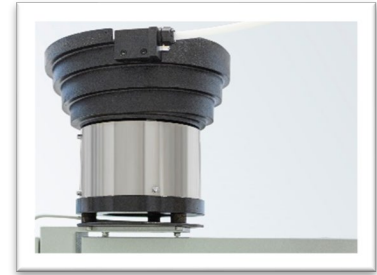
- | | |
|--|-------------|
| • N° of dowel insertion unit | 1 |
| • Standard dowel dimension (other dimensions on request) | ø 8 x 35 mm |
| • Maximum dowel length | 40mm |
| • Maximum dowel projection | 20mm |
| • 2 position revolver for dowel | |
| • Fiber optic sensor for dowel presence | |
| • The drill and dowel inserter are 64mm on-center | |



Dowel Vibrator Bowl

- Capacity

2000 dowels


Gluing & cleaning unit:

- Capacity of glue tank
- Capacity of cleaning tank
- Maximum glue viscosity
- NC control of glue amount
- Injector unit with inductive sensor to verify glue is shot
- Injector with double, reinforced seals to ensure no nozzle leakage

8 Liters

8 Liters

900 cps


Technical Data:
X axis, CNC with ball screw

- Installed torque 2.4 Nm
- Working area 1300mm (50")
- Carriage travel speed 50m/min (163.5 ft/min)

DEPTH "Y" axis (manual setting):

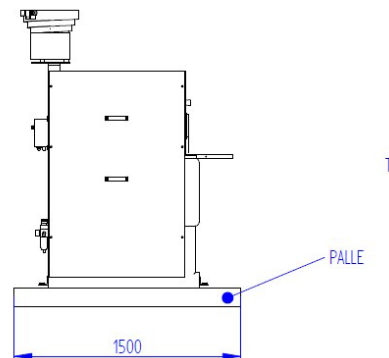
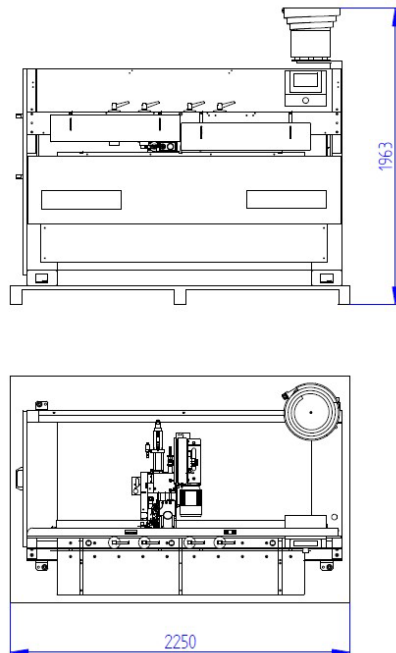
- Working stroke 40mm (1.57")

THICKNESS "Z" axis (manual setting):

- Working stroke 40mm (1.57")



General Information



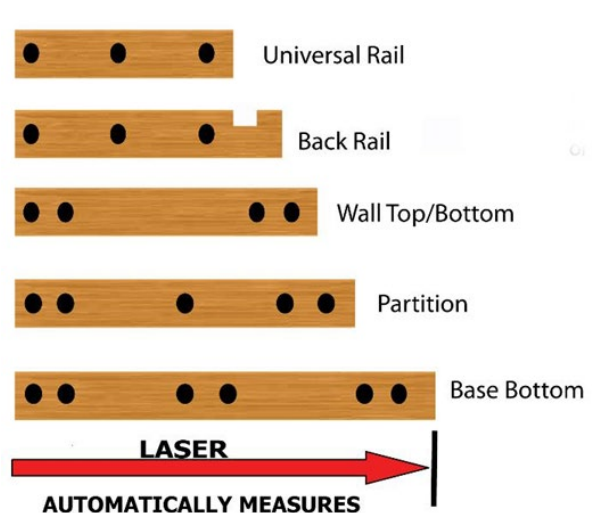
Gross Weight Kg. 1050
Net Weight Kg. 950

- Vertical Clamps
- Voltage
- Control Voltage
- Air Pressure
- Net Weight

4 (standard)
200V/60Hz/3~
24 VDC
7 BAR (101 psi)
1200 kg (2645 lbs)

PARAMETRIC LASER

The laser will measure the part and populate the program list for the part width. The parametric program will calculate all the dowel locations for the part based on bracketing width and 32 mm multiple from front edge. The operator just has to load the machine!



Note: The pictures and/or illustrations included in this quotation are for descriptive purposes and intended to aid in understanding certain features of the machine. Some depictions may not reflect the exact construction and may include options that are not part of this offer. In all cases, the written text supersedes any graphic representation.

TERMS AND CONDITIONS

ELECTRICS:	The machine will be prepared for operation on 230 volt, 3 phase, 60 cycle, either directly or through an auto transformer, unless otherwise specified by the purchaser.
CSA or EQUIVALENT	All machines are supplied with appropriate CSA or Electrical Safety Authority approvals. Any modifications that are required as a result of local or Provincial inspection programs are the responsibility of the purchaser, and at his own expense.
F.O.B.:	The equipment has been quoted F.O.B. SCM Group Canada Inc., Mississauga, Ontario.
INSTALLATION:	<p>To be understood as the assembly of the machine to be in a “ready-to-run” state. This does not include preparation of the site/floor, cleaning of the machine or the running of electrical, pneumatic or dust extraction services to the site. Customer is responsible for all necessary electrical, pneumatic and dust extraction hook-up to machine.</p> <p>Should our technician require assistance for the assembly of the machine, the purchaser will supply the necessary manpower and handling equipment.</p>
OPERATOR TRAINING:	Once the necessary electrical/pneumatic and dust extraction services have been provided and the machine is in a “ready-to-run” state, an SCM Group Canada service technician will test-run, adjust as necessary and provide basic operator training for the person(s) who are to operate and maintain the machine.
SOFTWARE TRAINING:	Should the machine purchased include software, basic courtesy training will be included with software.
WARRANTY:	<p>From the date of start-up a period of 1 year mechanical, electronic and electrical parts. Labor will be covered for one year. The warranty will apply to those items that are not regular wear items (i.e. belts, bearings).</p> <p>If all payments, including final payment are not received by SCM Group Canada Inc. as per the payment terms stated in this contract, the warranty immediately becomes null and void.</p>
TERMS:	<p>30% Deposit with order (non-refundable)</p> <p>70% Prior to delivery</p>

Terms are subject to credit verification by management. Sales contract MAA (Machine Acquisition Agreement) will be signed by an authorized person of the Company.

Our prices are based on current costs and are, of necessity subject to adjustment for any variations in factory list, exchange, duties and taxes as prevailing at time of invoice. Federal and Provincial Sales Taxes extra, if applicable. Prices are valid for 30 days.

Please note our literature (pamphlet) may show European features, which are not included in our quotation. SCM Group Canada Inc. is bound only by the Sales Order and Quotation signed by both parties at the bottom of all pages of these documents.

No verbal contracts in any way are deemed acceptable. By the signing and acceptance of this quotation, the buyer acknowledges that he fully understands what is included in the document.

Customer Signature

SCM GROUP CANADA-SALES REP.

This Price Quotation is for discussion purposes only and is not a legally binding agreement or contract standing alone. This Price Quotation is not a valid or binding obligation unless a Machinery Acquisition Agreement for the acquisition of the Machinery that specifically incorporates this Price Quotation ("MAA") is also