



TWO STAGE DUST COLLECTOR 10-810

OPERATING MAINTENANCE INSTRUCTIONS



FEATURES

- Excellent for collecting the large chips which will drop into the garbage can before reaching the impeller.
- The filter bag filters out the remaining sawdust down to 5 microns.
- With the cyclone effect fitting onto a standard garbage can there is no longer a need to dump the chips and dust from the collection bag to a disposable bag.
- Simply set the garbage can on the curb with the lid to be emptied.
- 5 micron filter bag as standard accessory.
- 45 gallon (55 gallon U.S.) drums not included.
- Overall height 121 1/4" (3080 mm).
- Mobile base for garbage can included.

SPECIFICATIONS

AIR SPEED	41 M/SEC
AIR DELIVERY	80 M ³ /MIN
AIR FLOW CAPACITY	2800 CFM
AIR SUCTION	8" (203 mm) x 1 hole
FILTER BAG	Ø24" x 70 7/8" (Ø610 x 1800 mm)
SPACE OCCUPIED	64" x 55" x 110 1/4" (1630 x 1400 x 2800 mm)
PACKING SIZE	51" x 34 1/4" x 28 3/8" (1300 x 870 x 720 mm)
MOTOR	3 HP
NET WEIGHT	550 LBS (250 Kg)
GROSS WEIGHT	616 LBS (280 Kg)

SAFETY RULES

READ CAREFULLY BEFORE OPERATING THE MACHINE

"WARNING" When using electric tools basic safety precautions should always be followed to reduce the risk of fire, electric shock and personal injury, including the following.

1. KEEP WORK AREA CLEAR
2. CONSIDER WORK AREA ENVIRONMENT
 - Do not expose tools to rain
 - Do not use tools in damp or wet locations
 - Keep work area well lit
 - Do not use tools in the presence of flammable liquids or gases
3. GUARD AGAINST ELECTRIC SHOCK
 - Avoid body contact with earthed or grounded surfaces
4. KEEP OTHER PERSONS AWAY
 - Do not let persons especially children, not involved in the work touch the tool or the extension cord and keep them away from the work area
5. STORE IDLE TOOLS
 - When not in use, tools should be stored in a dry locked-up place, out of reach of children
6. DO NOT FORCE THE TOOL
 - It will do the job better and safer at the rate for which it was intended
7. USE THE RIGHT TOOL
 - Do not force small tools to do the job of a heavy duty tool
 - Do not use tools for purposes not intended for example do not use circular saws to cut tree limbs or logs
8. DO NOT ABUSE THE CORD
 - Never yank the cord to disconnect it from the socket. Keep the cord away from heat, oil and sharp edges
9. SECURE WORK
 - Where possible use clamps or a vice to hold the work. It is safer than using your hand
10. DO NOT OVERREACH
 - Keep proper footing and balance at all times
11. MAINTAIN TOOLS WITH CARE
 - Keep cutting tools sharp and clean for better and safer performance
 - Follow instructions for lubricating and changing accessories
 - Inspect tool cords periodically and if damaged have them repaired by an authorized service facility
 - Inspect extension cords periodically and replace if damaged
 - Keep handles dry, clean and free from oil and grease
12. DISCONNECT TOOLS
 - When not in use, before servicing and when changing accessories such as blades, bits and cutters, disconnect tools from the power supply
13. AVOID UNINTENTIONAL STARTING
 - Ensure switch is in "off" position when plugging in
14. USE OUTDOOR EXTENSION LEADS
 - When the tool is used outdoors, use only extension cords intended for outdoor use and so marked
15. STAY ALERT
 - Watch what you are joining, use common sense and do not operate the tool when you are tired
16. CHECK DAMAGED PARTS
 - Before further use of tool, it should be carefully checked to determine that it will operate properly and perform its intended function
 - Check for alignment of moving parts, binding of moving parts, breakage of parts, mounting and any other conditions that may affect its operation
 - A guard or other part that is damaged should be properly repaired or replaced by an authorized service center unless otherwise indicated in this instruction manual
 - Have defective switches replaced by an authorized service center.
 - Do not use the tool if the switch does not turn it on and off
17. - The use of any accessory or attachment other than one recommended in this instruction manual may present a risk of personal injury.
18. HAVE YOUR TOOL REPAIRED BY A QUALIFIED PERSON
 - This electric tool complies with the relevant safety rules. Repairs should only be carried out by qualified persons by using original spare parts, otherwise this may result in considerable danger to the user.

Woodworking can be dangerous if safe and proper operating procedures are not followed. As with all machinery, there are certain hazards involved with the operation of the product. Using the machine with respect and caution will considerably lessen the possibility of personal injury. However, if normal safety precautions are overlooked or ignored, personal injury to the operator may result. Safety equipment such as guards, push sticks, hold-downs, featherboards, goggles, dust masks and hearing protection can reduce your potential for injury. But even the best guard will not make up for poor judgment, carelessness or inattention. Always use common sense and exercise caution in the workshop. If a procedure feels dangerous, don't try it. Figure out an alternative procedure that feels safer. REMEMBER: Your personal safety is your responsibility.

This machine was designed for certain applications only. GENERAL INTERNATIONAL strongly recommends that this machine not be modified and/or used for any application other than that for which it was designed. If you have any questions relative to a particular application, DO NOT use the machine until you have first contacted GENERAL INTERNATIONAL to determine if it can or should be performed on the product.

1. READ and understand instruction literature before operating product.
2. FOLLOW all local electrical and safety codes, as well as some relevant CSA standards. All electrical connections and wiring should be performed by qualified personnel only.
3. TO AVOID electrical shock, do not expose to rain or use in damp locations. Store machine indoors. Use for dry pick-up only.
4. UNPLUG machine from power source before servicing, unclogging or cleaning unit.
5. DUST generated by certain woods and wood products can be hazardous to your health. always wear eye protection and use face or dust mask in dust-laden environments.
6. REPLACE or repair damaged or worn cord immediately.
7. PROTECT the power cable and never allow the cable to come in contact with sharp objects.
8. DO NOT kink power cable and never allow the cable to come in contact with oil, grease, hot surfaces or chemicals.
9. MAKE CERTAIN that the power source conforms to the requirements of your equipment.
10. THERE is a high speed blower fan inside the blower housing that can amputate fingers, grab loose clothes or neckties. DO NOT insert fingers or any foreign object into the blower housing.

GENERAL ® INTERNATIONAL guarantee

All component parts of GENERAL INTERNATIONAL machinery are carefully inspected during all production stages and each machine is thoroughly inspected upon completion of assembly. Because of quality, GENERAL INTERNATIONAL agrees to repair or replace any genuine part or parts which, upon examination, proves to be defective in workmanship or material within a period of 24 months from date of purchase. In order to obtain warranty, all defective parts must be returned pre-paid to GENERAL INTERNATIONAL MFG. Co Ltd. Repairs made without our written authorization voids all guarantees.

2 STAGE DUST COLLECTOR 10-810

GENERAL® INTERNATIONAL 2-Stage Dust Collectors are carefully tested and inspected before shipment and if properly used will give perfect results. However, a reasonable amount of care and attention is necessary to ensure perfect performance and accurate work. It is imperative that you take a few moments to familiarise yourself with these instructions, as they will no doubt save you a lot of time and trouble.



UNPACKING AND ASSEMBLY

1. Unpack the shipping container with care.
2. Check nothing missing for the component listed in the assembly drawing.
3. Assembly the dust collector by following the drawing of the assembly draw.
4. Contact local agent for any problem of assembly and missing part.

Warning! Do not connect the dust collector to the power source until machine is completely assembled and you have read and understand the entire instruction manual.

HANDLING AND TRANSPORTATION

The net weight of this machine is about 550 LBS (250 kg). We recommend to move and assemble it with forklift truck.

ELECTRICAL CONNECTION / DISCONNECTION

1. ELECTRICAL CONNECTION

A - The hand-operated power disconnection device or the plug is recommended to be provided before the connection of power supply.

B - For the protection of control device, we recommend the operator to use 20 Amp time lag fuse, if an extension cord is used, use only 3-wire extension cords which have 3-prong grounding type plugs and matching receptacle which will accept the machine's plug.

2. ELECTRICAL DISCONNECTION

A - The disconnection is carried out by hand-operated disconnecting device.

B - Be sure to disconnect this machine from power source, when you want to stop the job, maintenance, and adjustment.

3. GROUNDING

In the event of a malfunction or breakdown, grounding provides a path of least resistance for electric current to reduce the risk of electric shock. This machine is equipped with an electric cord having an equipment-grounding conductor and a grounding plug. The plug must be plugged into a matching outlet that is properly installed and grounded in accordance with all local codes and ordinances.

WARNING!

DO NOT DISCONNECT GROUNDING TERMINAL BEFORE DISCONNECTING POWER SOURCE.

OPERATIONS

Note: This dust collector may produce a slight odor for the first couple hours of operation due to the protective coating which is applied to internal components. This odor will dissipate and should be disregarded.

This dust collector is designed to help maintain clean, safe conditions around dust creating machine in work shop and factory. Dust collector work by moving larger volume of air at lower suction pressure than vacuum cleaner. These unit is not designed to be used as high suction vacuum cleaners.

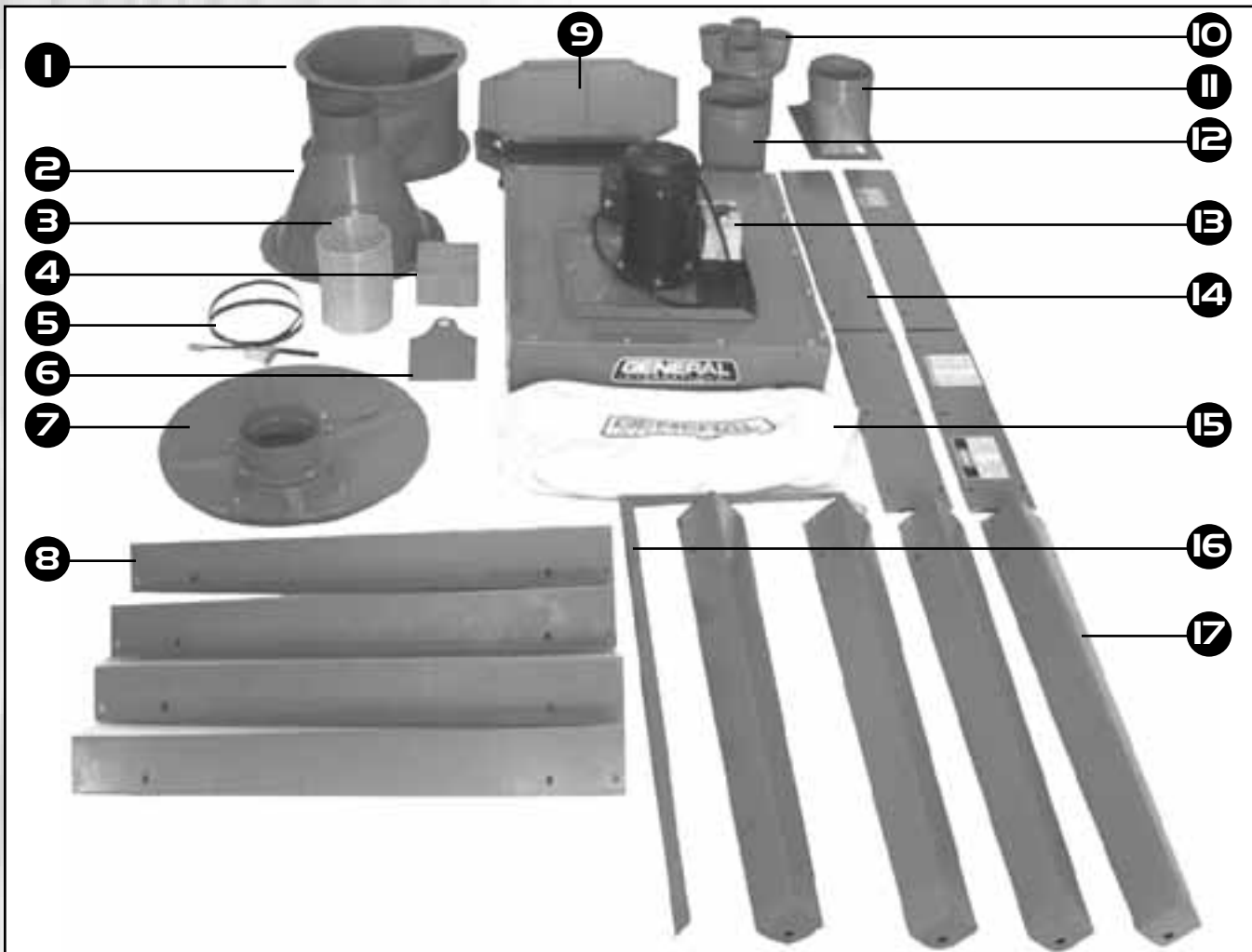
WARNING!

THE BLOWER HOUSING CONTAINS A HIGH SPEED RADIAL FAN THAT CAN AMPUTATE FINGERS, GRAB LOOSE CLOTHING AND NECKTIES, OR PROPEL DUST AT HIGH VELOCITY.

DO NOT OPERATE WITHOUT THE DISCHARGE GUARD AND DUST BAG IN POSITION.

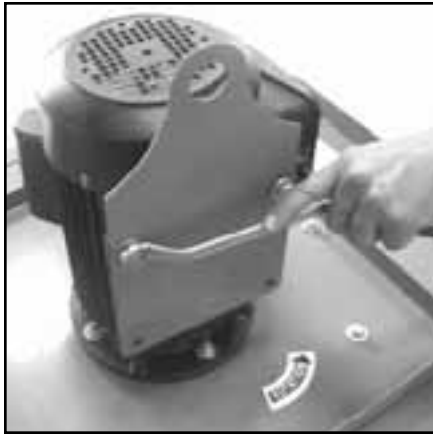
ASSEMBLY DRAWING & INSTRUCTIONS

Remove the dust collector components from the shipping containers. Please check parts list for missing or damaged parts.

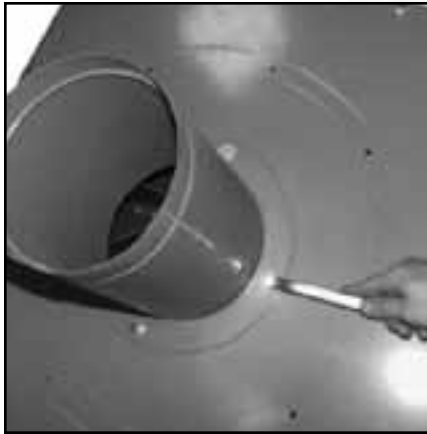


1.	DRUM	1 piece
2.	CYCLONE SEPARATOR	1 piece
3.	7" FLEXIBLE HOSE	1 piece
4.	HARDWARE PACKAGE	1 piece
5.	Ø 61 CM BAG BAND	1 piece
6.	MOTOR BASE	1 piece
7.	COVER	1 piece
8.	UPPER LEG	4 pieces
9.	DRUM BASE	2 pieces

10.	Ø 4" X 4 INLET	1 piece
11.	Ø 8" OUTLET	1 piece
12.	AIR FLOW PIPE	1 piece
13.	BLOWER HOUSING	1 piece
14.	SUPPORT BRACKET	4 pieces
15.	5 MICRON FILTER BAG	1 piece
16.	BAG HANGER	1 piece
17.	LOWER LEG	4 pieces



1. Fasten the motor base to motor with four 3/8" x 1 inch-long screws, four 3/8" flat washers, and four 3/8" nuts.



2. Fasten air flow pipe to blower housing with four 3/8" flat washer and four 3/8" x 1 inch-long screws.



3. Remove the paper backing and start the gasket material around the outer edge of drum and continue until a complete circle.



4. Fasten drum to blower housing with ten 3/8" flat washer and ten 3/8" screws.

IMPORTANT: drum can be rotated to any position best suited for the inlet, however, please do not position drum so inlet will interfere with four leg mounting lugs.



5. Remove the paper backing and start the gasket material around the outer edge of drum and continue until a complete circle.



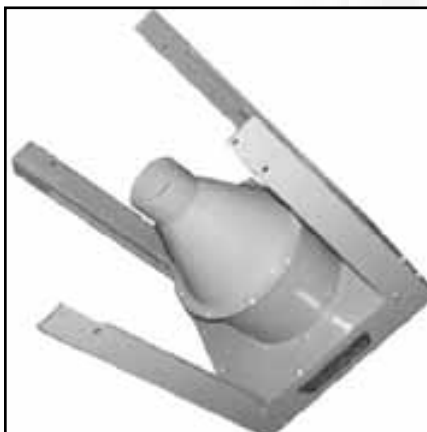
6. Fasten the cyclone separator with drum in ten 3/8" screws, twenty 3/8" flat washer and ten 3/8" hex nuts. Flat washer should be used on two side of flange.



7. Assemble one leg section to blower housing and fasten with four 3/8" x 1 inch-long screw, four flat washers.

NOTE: Do not completely tighten hardware at this time.

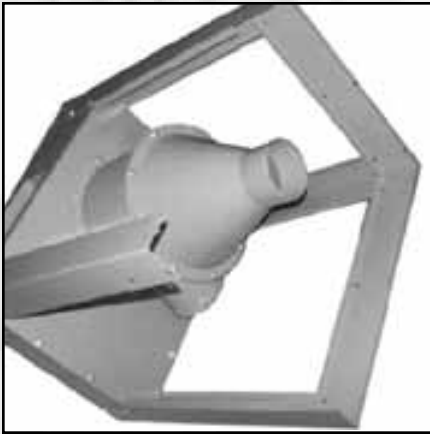
8. Assemble remaining three legs to blower housing in the same manner.



9. Illustrates upper legs assembled to blower housing.



10. Place one support bracket on the inside of two upper legs. Do not use any screw at this time.



11. Place another support bracket on the inside of two legs.



12. Place one lower leg to the outside of upper leg and support bracket.



13. Make sure the lower leg on the outside of upper leg and support bracket on the inside of upper leg. Fasten upper leg, lower leg and support bracket with four 3/8" x 1 inch-long screws, eight 3/8" flat washers and four 3/8" hex nut.



14. Attach the remaining brackets and lower legs to upper legs assemblies in the same manner.

LIFTING THE DUST COLLECTOR

THE DUST COLLECTOR CAN BE RAISED TECHNICALLY OR MANUALLY, BUT WE STRONGLY RECOMMEND USING LIFT TRUCK WITH GUIDE ROPES TO SET THE UNIT UPRIGHT.

IMPORTANT: Carefully loosen mounting hardware at least enough to adjust the dust collector, mounting four legs to floor surface. And then tighten all legs and foot mounting hardware after dust collector is level with the floor surface.

DO NOT ASSEMBLE CASTERS TO THE FEET AS THEY CAN CREATE HAZARD.



15. Remove the paper backing and start the gasket material around the outer edge of outlet and continue until a complete turn.



16. Position outlet to the blower housing, and align holes. Fasten with ten 3/8" x 1 inch-long screws and ten 3/8" flat washer.



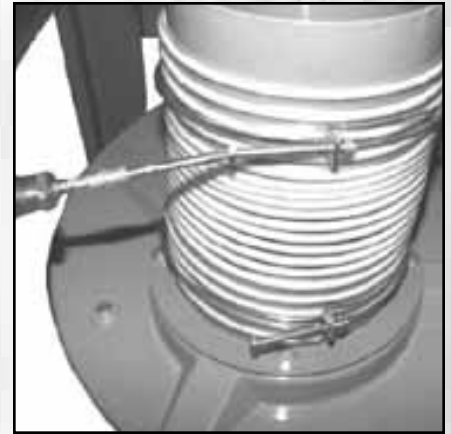
17. Position the 4 inch x 4 holes inlet housing to 8 inch inlet of blower housing. Align holes in inlet housing with pre-drilled holes in inlet and fasten with three pan head screws.



18. Position rubber gasket on the outer edge of hole of collecting drum cap and hose connector on the rubber gasket.



19. Fasten hose connector to cover with four 5/16 X 1" screw, four 5/16" flat washer, four 5/16:" lock washer and four 5/16" hex nut.

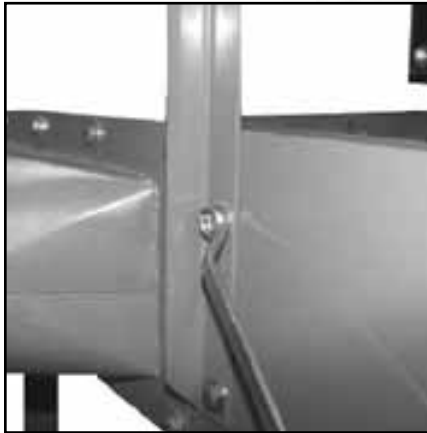


20. Assemble hose over bottom outlet of cyclone separator and tighten clamp.

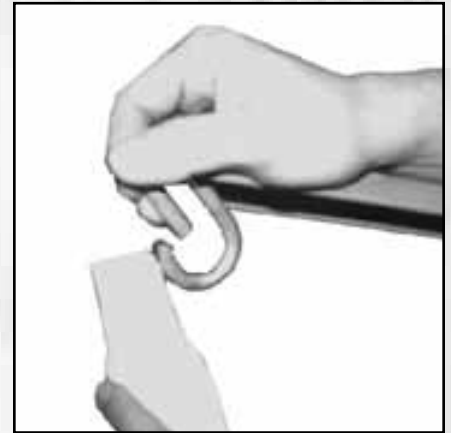
21. Assemble hose over hose connector, slide clamp downward over flange and tighten screw.



22. Assemble switch panel on the support bracket with two 3/8" x 3/4" screws, four 3/8" flat washer and two 3/8" hex nut.



23. Assemble bag hanger to blower housing with two 3/8" x 3/4" screws, and two 3/8" flat wahser.



24. Attach eyelet which on top filter bag to hanger hook and lock it.



25. Place inlet of filter bag to 8" outlet and tighten it with 8" bag band.



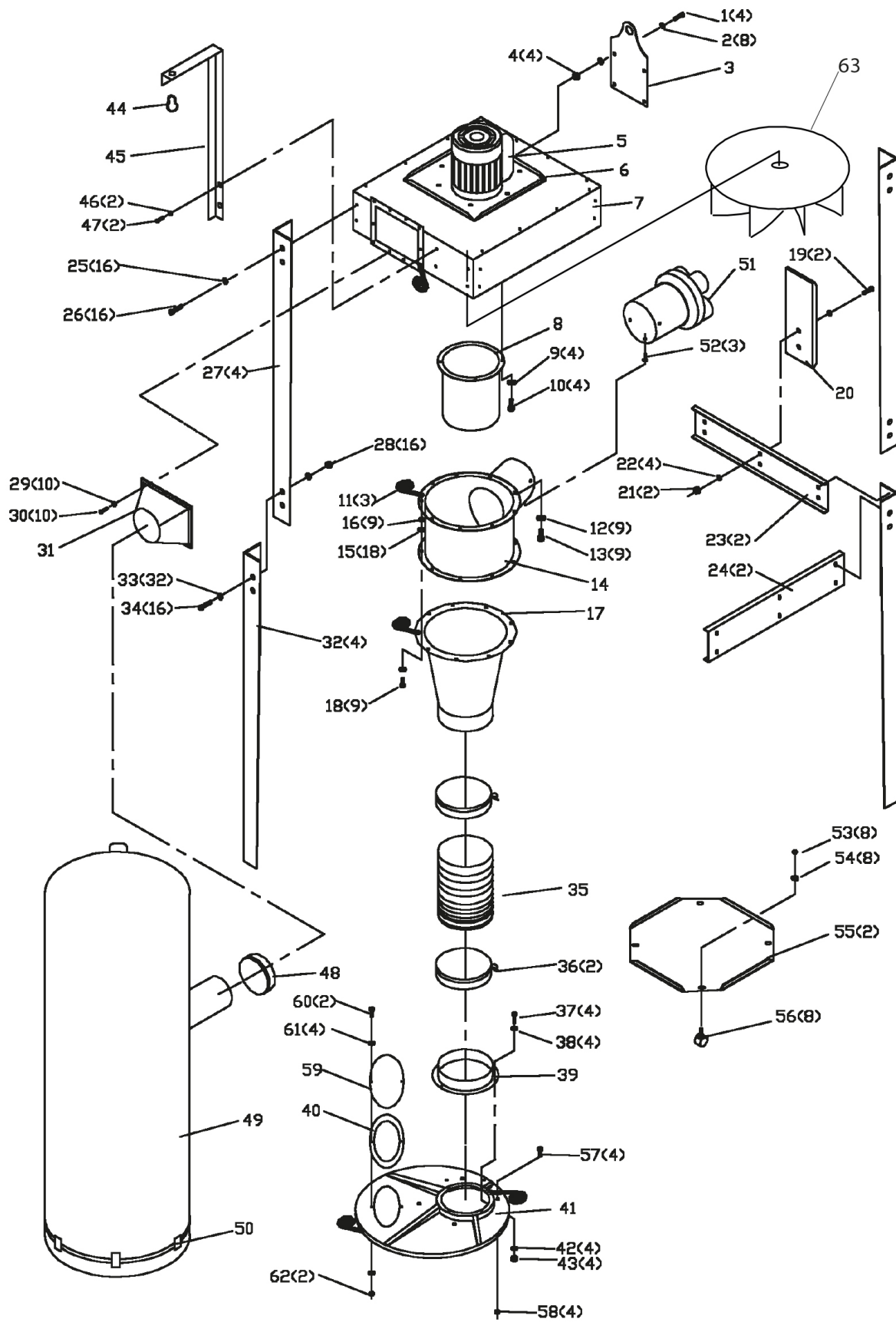
26. Assemble the wheel to collecting drum base with 3/8" hex nut and 3/8" flat washer.

27. Assemble remaining seven wheels to 2 pieces of collecting drum base in the same manner.



28. Position bag filter on 50 gallon drum and tighten it with bag band as shown.

ASSEMBLY DRAWING IO-810

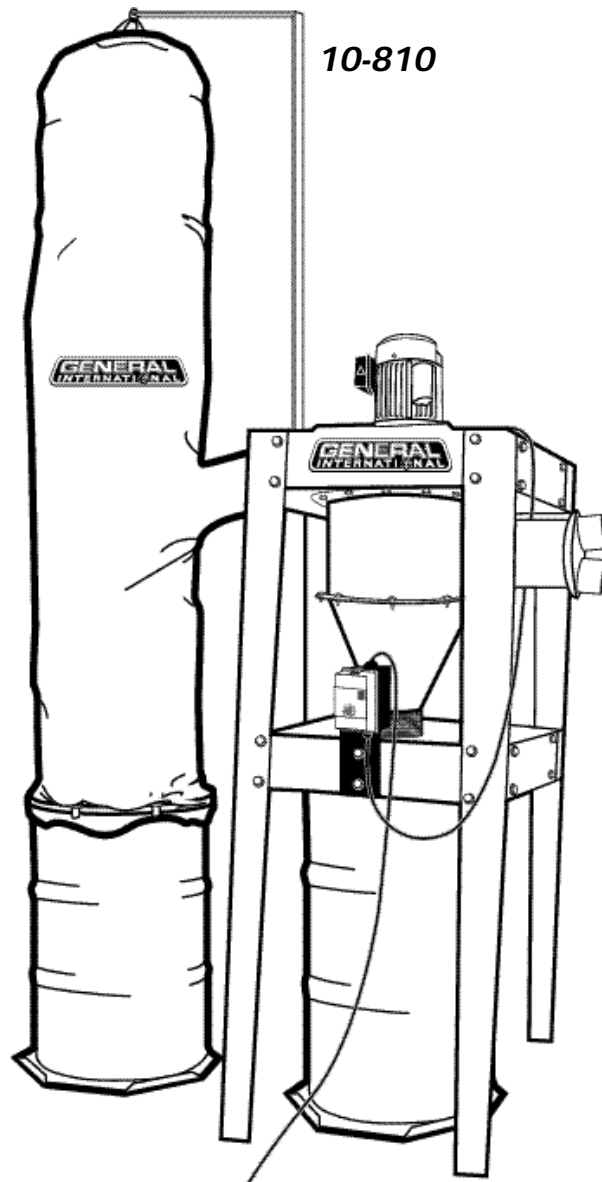


**PARTS LIST
10-810**

REF. NO.	DESCRIPTION	QTY	REF. NO.	DESCRIPTION	QTY
1	5/16" x 3/4" HD HEX SCREW	4	32	LOWER LEG	4
2	5/16" FLAT WASHER	8	33	5/16" FLAT WASHER	32
3	MOTOR BASE	1	34	5/16" x 1" HD HEX SCREW	16
4	5/16" HEX NUT	4	35	Ø 7" FLEXIBLE HOSE	1
5	MOTOR	1	36	Ø 7" HOSE CLAMP	2
6	BLOWER COVER	1	37	5/16" x 3/4" HD HEX SCREW	4
7	BLOWER HOUSING	1	38	5/16" FLAT WASHER	4
8	AIR FLOW PIPE	1	39	HOSE CONNECTOR	1
9	5/16" FLAT WASHER	4	40	RUBBER GASKET	1
10	5/16" x 3/4" HD HEX SCREW	4	41	COVER	1
11	GASKET TAPE	3	42	5/16" LOCK WASHER	4
12	5/16" FLAT WASHER	9	43	5/16" HEX NUT	4
13	5/16" x 3/4" HD HEX SCREW	9	44	HOOK	1
14	DRUM	1	45	BAG HANGER	1
15	5/16" FLAT WASHER	18	46	5/16" FLAT WASHER	2
16	5/16" HEX NUT	9	47	5/16" x 1" HD HEX SCREW	2
17	CYCLONE SEPARATOR	1	48	Ø 8" BAG BAND	1
18	5/16" x 1" HD HEX SCREW	9	49	FILTER BAG	1
19	5/16" x 3/4" HD HEX SCREW	2	50	Ø 61 CM BAG BAND	1
20	SWITCH PANEL	1	51	Ø 4" INLET	1
21	5/16" HEX NUT	2	52	M4.2 PAN HEAD SCREW	3
22	5/16" FLAT WASHER	4	53	3/8" HEX NUT	8
23	SUPPORT BRACKET(S)	2	54	3/8" LOCK WASHER	8
24	SUPPORT BRACKET(L)	2	55	BASE	2
25	5/16" FLAT WASHER	16	56	WHEELS	8
26	5/16" x 1" HD HEX SCREW	16	57	5/16" x 3/4" HD HEX SCREW	4
27	UPPER LEG	4	58	5/16" HEX NUT	4
28	5/16" HEX NUT	16	59	COVER PLATE	1
29	5/16" FLAT WASHER	10	60	3/8" x 3/4" HD HEX SCREW	2
30	3/8" x 3/4" HD HEX SCREW	10	61	3/8" FLAT WASHER	4
31	Ø 8" OUTLET	1	62	3/8" HEX NUT	2
			63	IMPELLER	1

NOTES





8360, Champ-d'Eau, Montreal (Quebec)
Canada H1P 1Y3

Tel.: (514) 326-1161

Fax : (514) 326-5555

www.general.ca

IMPORTANT: When ordering replacement parts, always give the model number, serial number of the machine and part number. Also a brief description of each item and quantity desired.