

Edge banders for the advanced joinery.

SCM's objective is to guarantee customers high quality technologies which meet their requirements in such a way as to make SCM the partner for any needs.

me range

Flexibility in edge banding.

automatic edge banders

me 40
page 4



me 35
page 5



me 28t
page 6



me 25
page 6



me 22
page 7



me 20
page 7



manual edge bander and trimming machine

e 20
page 20



t 20
page 24



automatic
edge banders
me 28t
me 25
me 22
me 20



		me 28t	me 25	me 22	me 20
Thickness of rolled edges	mm	0,4 ÷ 3	0,4 ÷ 3	0,4 ÷ 2	0,4 ÷ 2
Max. thickness of edges in strips (* End-Cutting unit excluded)	mm	5	5	5*	5*
Min. ÷ max. panel height	mm	12 ÷ 50	12 ÷ 50	12 ÷ 50	12 ÷ 50
Min. panels length/width with rolled edges	mm	190 / 110	190 / 65	190 / 65	180 / 65
Feed speed	m/min	7	7	7	6
Find the complete technical specification at page 18					



Gluing Unit
efficiency



"Radius" End-Cutter
brilliant idea



Trimming Unit
excellent finishing



Finishing Units
superior quality



PLC Control Panel
simple to use

Automatic edge bander with glue pot to edge band, with great flexibility, with melamine edges, PVC and ABS up to 3 mm and wooden strips up to 5 mm.

automatic
edge banders
electronic
controls

edge banding technology... at your fingertips

"eye-S" Compact Console.

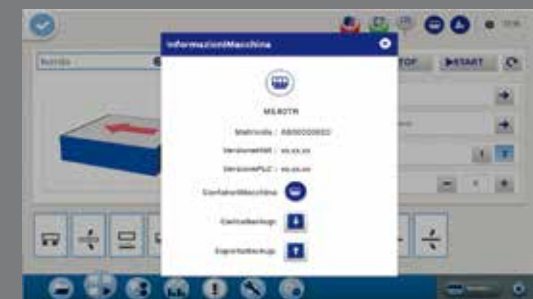
me 40/me 35

Optimal managing of the machine thanks to the new 10" touch screen control panel with **Maestro** active edge, operator interface, where all of the machine functions are graphically shown. Three working modes are available: manual, program and job order.



Immediate and intuitive panel programming thanks to the adaptive 3D design of the processing with real time preview.

No possibility of error with the machining guidance system that suggests the correct machine set up to the operator.





Maestro active edge

Maestro active is the new operator interface software which has been unified across all SCM technologies. A single operator can easily and confidently run multiple machines due to controller and interface consistency: regardless the machine, Maestro active maintains the same *look&feel*, with many identical icons and navigation buttons, thus ensuring the same approach to interaction.

EASE OF USE

The new interface has been specifically designed and optimized for immediate use via touch screen. Graphics have been redesigned for simple and comfortable navigation, with tablet-like icons on touch screen controller.

"ZERO" ERRORS

Improved productivity thanks to guided procedures that reduce the possibility of error from the operator's side.

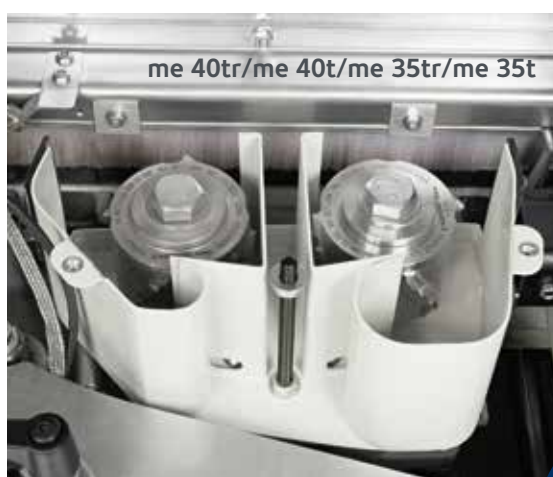


PLC Control Panel.

me 28t/me 25/me 22/me 20

Simple and intuitive, it enables an easy selection of all the main functions and guides the operator during maintenance, cleaning and diagnostic operations.

automatic edge banders operating groups



designed for
a perfect finish

Panel Feed Speed

By Track (me 40/me 35).

High productivity by the track feed speed. The encoder for feeding panel control (me 40) ensures the total working cycle control.

By Conveyor (me 28t/ me 25/ me 22/me 20).

The very best finishing of the panel edge is also guaranteed by the panel conveyor (exclusive solution), which prevents the panel having the feed affected by the typical pulses generated by the pinion of a traditional feed track and ensures a smooth and linear panel movement.

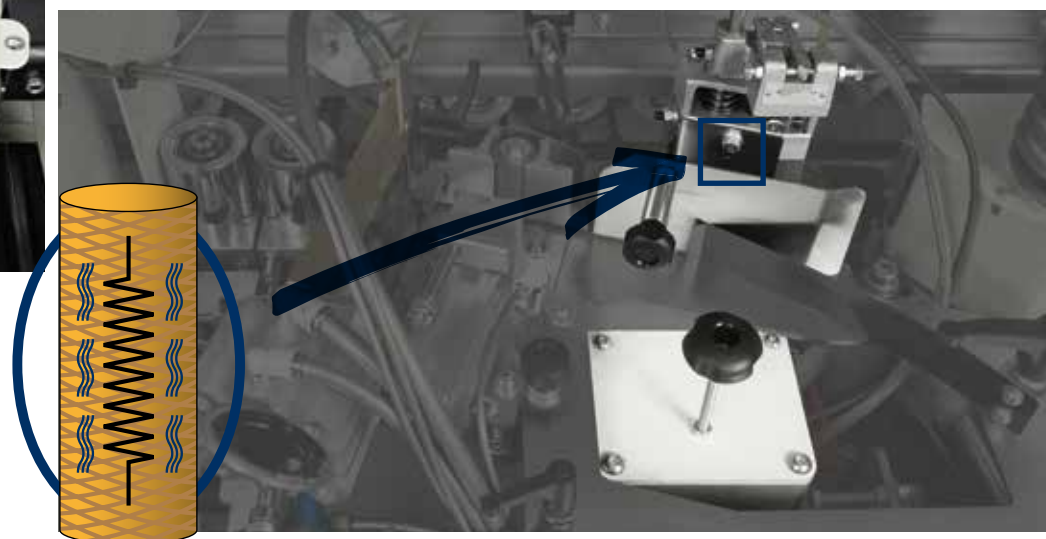
perfect edge joint line

Pre-Milling Unit.

me 40tr/me 40t/me 35tr/me 35t/me 28t

Panel edge surface without any imperfections before the gluing operation. It utilizes 2 tools (1 tool for me 28t) with opposing rotation and timed intervention that, through the removal operation, corrects any panel imperfections caused by the saw cutting process and panel storage. The independent exhaust system and the air blowing device removes dust and chips from the panel.

- Diamond cutters available as standard feature



ideal edge application

Gluing Unit.

The glue is heated rapidly and evenly by the resistances. The **automatic lowering of the glue temperature** after a temporary halt in production when using the machine avoids burning of the glue. A new **innovative system of self-lubrication of the glue pot**, enables a more extensive use of the edge banding machine without the necessity of lubrication. Two rollers press the edge banding evenly and efficiently on to the panel edge. The glue spreading roller with electrical resistance inside provides a uniform glue spread and always at the maximum working temperature even on panels at the maximum working height.

Glue pot rapid unlocking and PU glue pot are available as an option (me 40/me 35).

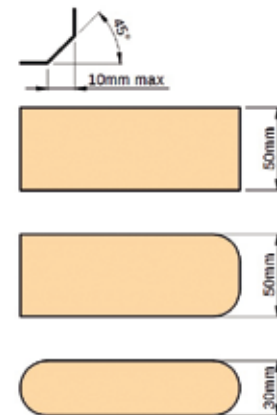
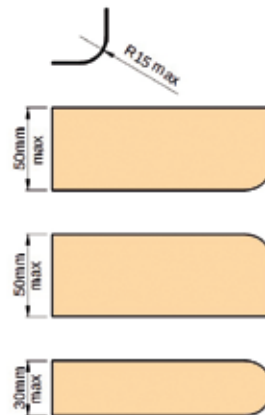
always accurate when cutting

End-Cutting Unit.

me 40/me 35: the unit is equipped with a blade and a high frequency motor to provide the **best finishing quality** of the machined edge. Furthermore, the absence of belts or other driving systems prevents any vibration assuring **the best results at all times**. (A)

me 28t/me 25: optimal accuracy offered by the unit, with a cutter and an independent asynchronous motor. (B)

me 22/me 20: the efficient cutter ensures cutting always accurate. The reference is taken directly on the panel itself; consequently it doesn't require any adjustment. (C)



technologically advanced solutions

Rounding Unit.

me 40tr/me 35tr

It carries out the rounding of thin and thick edges up to 3 mm, for the best panel finish quality.

automatic edge banders operating groups



me 28t



me 40t/me 35t



brilliant idea

End-Cutting Unit with "Radius".

me 40t/me 35t/me 28t

The unit (optional for me 28t) allows you to make a radius on the corners of the edged panel without the need for the operator to have to finish by hand at a later stage: brilliant idea to a finished product of high quality.

quality finishing and
versatility

Trimming Unit.

me 40/me 35: very high edge quality finishing with **the rotating copiers.**

The high frequency motors generate high cutter rotating speed, reducing to a minimum any marks left from trimming and guaranteeing the absence of vibrations. (A)

me 28t/me 25 ed me 22/me 20: the unit functions with slide copying to align perfectly to the work piece. (B) The cutters are designed for straight or radius trimming of any type of edge, whether it is thick or thin, made of PVC, ABS, melamine, laminate or wood. The edge thickness is easily set by means of two numerical readouts.



A



B





automatic edge banders optional operating groups



high finish quality

Panel Heating Devices.

me 40/me 35/me 28t

They considerably improve the gluing quality by heating the panel before the glue application.

The IR lamp is ideal for those who work in cold environments (me 40/me 35).



ease-of-use

Automatic Loading for Edges in Strips.

me 40/me 35/me 28t/me 25

The solid wood strips are automatically loaded and synchronized with the introduction of the panels into the machine.



maximum efficiency

Glue Pot for PUR Glue with Rapid Purging System.

me 40/me 35

It is ideal to work with polyurethane glue or when using glues of different colors. The new **rapid purging system** highly increases the machine productivity, reducing downtimes for cleaning and glue replacement operations.





perfect radius on pvc/abs edges

Edge Scraping Unit.

me 40/me 35/me 28t/me 25/me 22

High finishing quality of plastic material edges thanks to the radius knives that ensure the complete elimination of any marks left from the trimming unit tools, all equipped with a **front and vertical disc copiers (me 40/me 35)**, and a user-friendly device for exclusion of the unit when it is not in use.

The **numerical indicator for the horizontal adjustment (me 40/me 35)** enables a quick positioning of the unit during the processing of edges with different thicknesses.

me 28t/me 25/me 22



optimal edge cleaning

Glue Scraping Unit.

me 40/me 35/me 28t/me 25/me 22

It eliminates any excess glue on the panel/edge joint.

The **rotating copying device (me 40/me 35)** allows to perform even the most delicate panels.

me 40/me 35



reliable technology

Nesting Copying Devices.

me 40/me 35

The nesting copying devices, for the trimming unit and the edge scraping unit, enable to machine without any problem panels coming from "nesting" production cycle (with seats for hinges executed before the edge banding phase).

automatic edge banders optional operating groups

perfect finish quality
**Spry-mist Device and Anti-adhesive
Unit for Edge Finish.**
The units improve the panel
cleaning and polishing.



optimal finishing

Brushing Unit.

me 40/me 35/me 28t/me 25
With tilted, vertically adjustable motors
to optimize the cleaning/polishing
action on the panel edge.



innovation at
everybody's reach

Grooving Unit.

me 40/me 35

The optional unit is able to perform
a slot on the panel directly on the
edging process, **without having
to sacrifice the finishing and
cleaning units.**

ergonomic

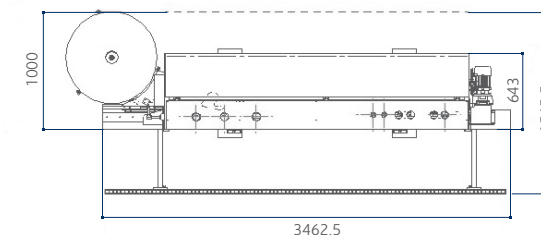
Lighting of the Machine Interior.

me 40/me 35

The **high efficiency LED lamp** improves the view of the operating units inside the machine without needing to open its door. This device is particularly useful for a safe observation of the machine during the processing.

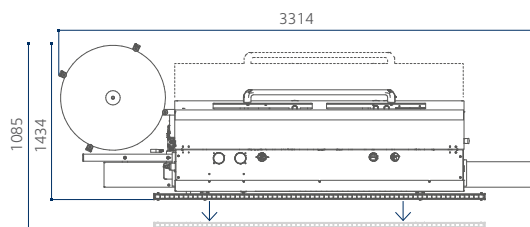


automatic edge banders technical data

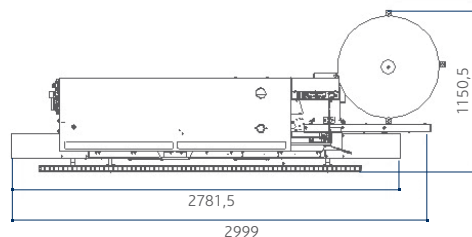


me 40

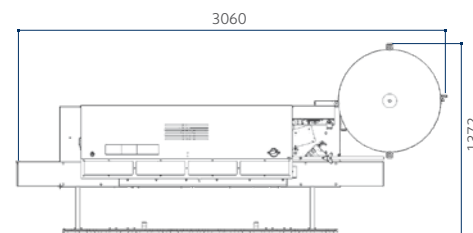
TECHNICAL DATA		me 40	me 35	me 28t	me 25	me 22	me 20
Worktable dimensions	mm	3465 x 710	3000 x 525	2800 x 570	2600 x 530	2600 x 530	1950 x 180
Worktable height	mm	875	904	904	904	904	904
Thickness of rolled edges	mm	0,4 ÷ 3	0,4 ÷ 3	0,4 ÷ 3	0,4 ÷ 3	0,4 ÷ 2	0,4 ÷ 2
Thickness of edges in strips <i>(*not valid for me 35tr)</i>	mm	5	5*	5	5	2	2
Min. ÷ max. panel height	mm	8 ÷ 50	8 ÷ 50	12 ÷ 50	12 ÷ 50	12 ÷ 50	12 ÷ 50
Min. panels length / width with rolled edges	mm	190 / 110	190 / 110	190 / 110	190 / 65	190 / 65	180 / 65
Min. panel length cut only on the front	mm	120	120	120	120	120	120
Feed speed	m/min	9	7	7	7	7	6
Feeder motor power (S1)	kW	0,55	0,55	0,55	0,55	0,55	0,25
Pneumatic operating pressure	bar	6,5	6,5	6,5	6,5	6,5	6,5
Working temperature	°C	20 ÷ 190	20 ÷ 190	20 ÷ 190	20 ÷ 190	20 ÷ 190	20 ÷ 190
pre-milling unit (me 40tr/me 40t/me 35tr/me 35t/me 28t)							
Motor power (S1)	kW	2,2	2,2	2,2	-	-	-
Cutters rotating speed	rpm	7.200	7.200	7.200	-	-	-
Diamonds cutters (standard)		N.2 Ø 80 mm H=56 Z2	N.2 Ø 80 mm H=56 Z2	N.1 Ø 80 mm H=56 Z2	-	-	-
Stock removals	mm	0 ÷ 2	0,5 / 1 / 1,5 / 2	0,5 / 1 / 1,5 / 2	-	-	-
gluing unit							
Motor power (S1)	kW	0,18	0,18	0,18	0,18	0,18	0,18
Glue capacity	kg	~ 0,8	~ 0,8	~ 0,8	~ 0,8	~ 0,8	~ 0,8
end-cutting unit							
Motor power <i>(*high frequency motor)</i>	kW	0,19*	0,19*	0,37	0,37	-	-
End-cutting blade		Ø 125 mm Z20	Ø 125 mm Z20	Ø 90 mm Z20	Ø 90 mm Z20	knives	knives
Blade rotating speed	rpm	12.000	12.000	12.000	12.000	-	-
rounding unit							
Motor power (S1)	kW	0,35	0,35	-	-	-	-
Cutter		Ø 58 mm Z4	Ø 58 mm Z4	-	-	-	-
Cutter rotating speed	rpm	12.000	12.000	-	-	-	-
trimming unit							
Upper and lower motor power <i>(*high frequency motors)</i>	kW	2 x 0,35*	2 x 0,35*	0,75	0,75	0,55	0,55
Diamond cutters		Ø 55,3 mm Z3	Ø 55,3 mm Z3	Ø 75 mm Z4	Ø 75 mm Z4	Ø 75 mm Z4	Ø 75 mm Z4
Cutters rotating speed	rpm	12.000	12.000	9.000	12.000	12.000	12.000
additional technical features							
Exhaust outlets pre-milling unit, number / diameter	n./mm	60	2 / 80	80	-	-	-
Exhaust outlet gluing unit, diameter	mm	80	60	60	60	60	60
Exhaust outlets trimming unit, number / diameter	n./mm	60	2 / 60	-	-	-	-
Exhaust outlet on base structure, diameter	mm	-	-	120	120	120	120



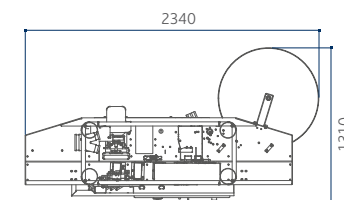
me 35



me28t



me25
me22



me 20

MAIN OPTIONAL DEVICES

	me 40	me 35	me 28t	me 25	me 22	me 20
Anti-adhesive Unit	O	O	-	-	-	-
Pre-Milling Unit	S ³⁻⁴	S ³⁻⁴	S	-	-	-
Panel Heating System	O	O	O	-	-	-
IR Lamp	O	O	-	-	-	-
Automatic Loading for Edges in Strips	S	S	S	S	S	S
Automatic Loading for Edges in Strips with Storage	O	O	O	O	-	-
Standard Gluing Unit	S	S	S	S	S	S
Glue Pot for PUR Glue with Rapid Purging System	O	O	-	-	-	-
End-Cutting Unit with Shear Device	-	-	-	-	S	S
End-Cutting Unit with Blade	S	S	S	S	-	-
End-Cutting Unit with "Radius"	S ³	S ^{3-*}	O	-	-	-
Rounding Unit	S ⁴	S ^{4-*}	-	-	-	-
Trimming Unit	S	S	S	S	S	S
Nesting Copying Device for Trimming Unit	O	O	-	-	-	-
Edge Scraping Unit	O	O	S	S	O	-
Nesting Copying Device for Edge Scraping Unit	O	O	-	-	-	-
Spry-mist Device for Edge Finish	O	-	-	-	-	-
Glue Scraping Unit	O	O	S ¹	S ¹	O	-
Brushing Unit	O	O	S ²	S ²	O	-
Grooving Unit	O	O	-	-	-	-
Lighting of the Machine Interior	O	O	-	-	-	-

¹ RC version

² SP version

³ T version

⁴ TR version

* instead of the standard End-Cutting Unit

S Standard

O Option