

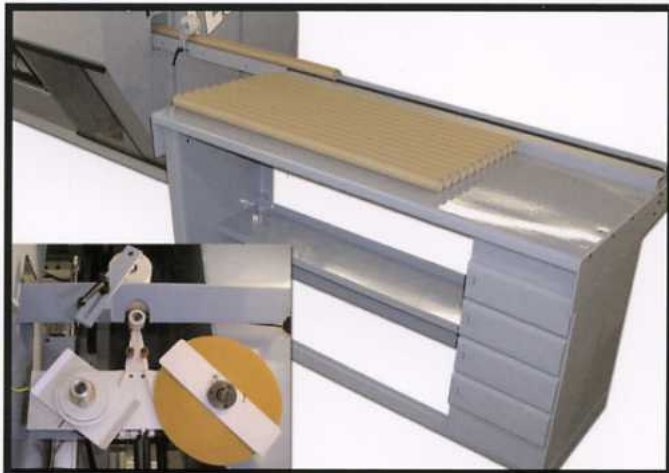
THE JENNERJAHN JLS

Productive Innovation

Jennerjahn
Machine

www.jennerjahn.com





Cores are loaded on the optional offset staging table and automatically indexed to the core infeed conveyor. A larger capacity core hopper is also available as an option. Photo inset shows an optional tape to core system that secures the tails to the cores with an adhesive.

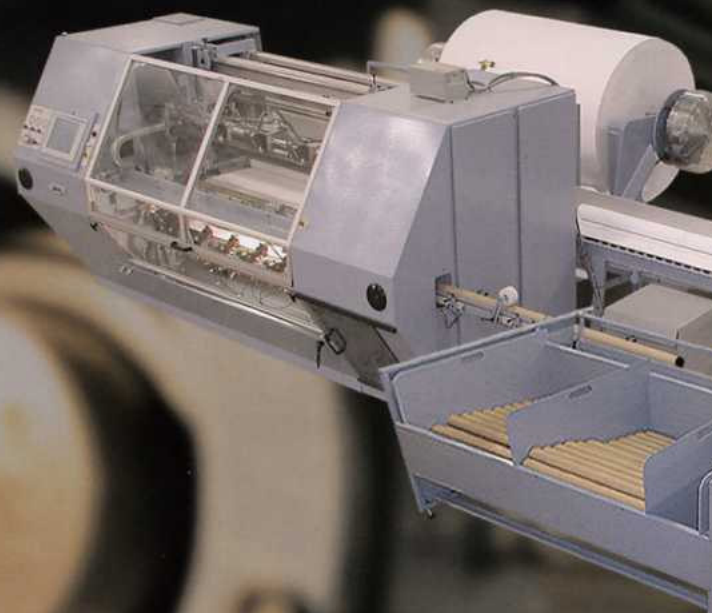


The autoloader transfers the cores to the winding station utilizing a pick and place vacuum device. The machine will continue to operate in a fully automatic mode as long as cores are in the hopper and the unwind stand is loaded with product.



Jennerjahn's shaftless rewind system eliminates the need for any rewind mandrels. Chucks are activated to secure the cores during the winding process. Chuck tips for 2 - 4 inch O.D. cores can be easily interchanged. Custom sizes are also available.

Productive



JLS Fully Automatic Slitter/Rewinder

Jennerjahn Machine designed their first wide format slitter/rewinder in 1998 at the request of a converter who was seeking a faster and more efficient way to produce plotter, ink jet, counter and engineering rolls.

The JLS Slitter/Rewinder is an updated version of that machine and our newest offering in our highly productive line of converting equipment. This machine represents a new and more efficient design that cleverly incorporates the latest technology to make the industry's most productive wide format machine even better.

This new technology combined with our superior slitting and rewinding technique, our unique but simple shaftless rewind, and our automated roll removal and tail sealing system equates to the industry's most flexible and productive machine.

Because Jennerjahn Machine has the ability to supply quality, custom solutions, this machine's

Innovation

Automated Rewinder

high productivity and superior flexibility can be supplied in a variety of configurations that will fit nearly any company's budget.

Once the machine is set up, our fully automated version consistently produces product without any operator involvement.

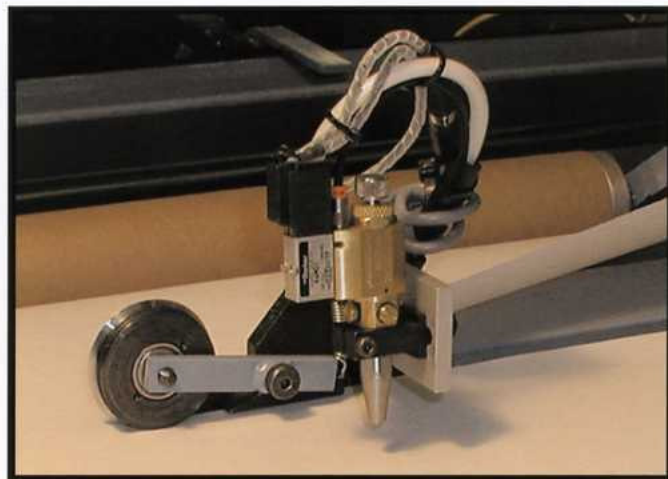
The machine comes standard with over a dozen set-up videos. With a touch of a button, the operator can review a setup right from the operator interface screen.

JLS Standard Specifications

Maximum Web Width:	73" (1854mm)
Maximum Rewind Diameter:	18" (457mm)
Rewind Core O.D.:	2"- 4" (50.8-101.6mm)

Custom Specifications & Options Are Available.

<u>Roll Length</u>	<u>Cycle Time</u>
150 ft.	23.5 sec.
300 ft.	27.5 sec.
500 ft.	34.0 sec.
1000 ft.	55.0 sec.



The streamlined automatic tail cut and glue system provides a shear cut and effective glued seal of the finished rolls. Razor cut and pneumatic-powered rotary blade tail cut systems can also be used to cut a variety of films, non-wovens and house wrap type materials.



An automatic tabbing system can be used to apply pressure sensitive labels to seal the tails of each finished roll. The operator can easily change the number or position of the tabs from the operator interface touch screen.



Once the finished rolls have been sealed, they are automatically transferred from the machine onto a heavy-duty conveyor system and carried to the packing table.

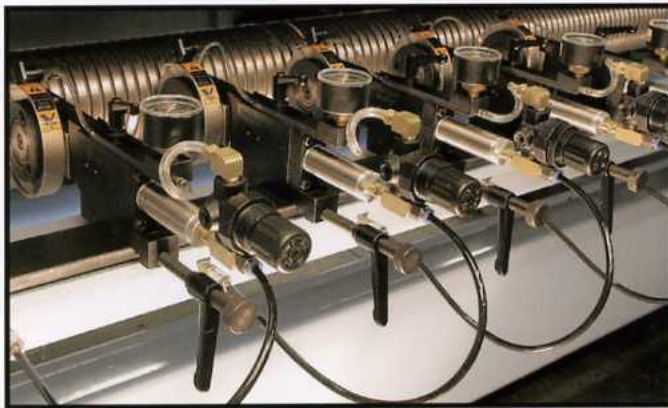


The JLS Slitter/Rewinder can be supplied in a variety of configurations and customized to your specifications.

A Jennerjahn Shaftless Unwind Stand comes standard with every JLS slitter/rewinder.

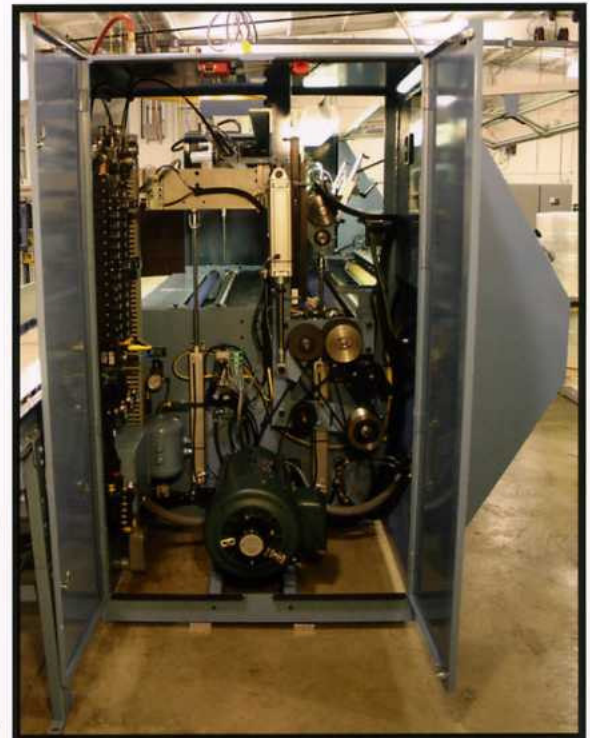
The master roll width can range between 24" to 74" with a maximum roll diameter of 60".

The back of the machine is guarded with perimeter fences and a light curtain to allow easy access to the unwind stand during mill roll changes.



EMT knives are pneumatically activated and can be easily adjusted in 1/2 inch increments along the web to provide a superior cut. Alternative knives and cut width increments are available.

Double doors located on each side of the slitter/rewinder allow quick and easy access for operators and maintenance personnel to all areas of the machine. To insure a safe environment, safety interlocks are used on all doors. This will prevent the machine from running if a door has been left open.



A touch screen operator interface and computer maintenance port have been added to assist with machine setup, operation, troubleshooting and preventative maintenance. With a touch of a button, the operator can review over a dozen setup videos, assembly prints, product menu run lists and much more.



901 Massachusetts Avenue / P.O. Box 379 Matthews, Indiana 46957 U.S.A.

Phone: 765-998-2733 Fax: 765-998-2468

sales@jennerjahn.com service@jennerjahn.com