

CONCRETE BATCH PLANTS

SPECIFICATIONS FOR COMANCHE BATCH PLANT

- THREE COMPARTMENT 59 CU.YD (80 TONS)
- CLAMSHELL TYPE GATE WITH REPLACEABLE GREASE-TYPE PIVOT PINS AND BRASS BUSHING FOR EACH BIN
- AIR CYLINDER AND SOLENOID FOR EACH OVERHEAD BIN GATE
- 12 CU. YD. BATCHER WITH SINGLE DISCHARGE GATE
- AIR CYLINDER WITH INCHING SOLENOID FOR AGGREGATE BATCHER
- AIR VIBRATOR WITH SOLENOID FOR BATCHER
- 30" X 40'-0" CONVEYOR WITH 15 HP DRIVE
- CEMA "B" CLASS IDLERS FOR CONVEYOR
- 3" TURBINE TYPE WATER METER WITH PLUSE HEAD INLET WATER STRAINER AND VALVE
- 10 HP AIR COMPRESSOR WITH 120 GALLON STORAGE TANK
- REQUIRED AIR LINE FILTER, LUBRICATOR AND REGULATORS FOR AIR COMPONENTS
- ENCLOSURE FOR SOLENOIDS EACH EQUIPPED WITH SAFETY CUTOFF VALVES
- NEMA 4 ENCLOSURE, MOTOR STARTER AND MAIN DISCONNECT
- SOLENOID VALVES PRE-WIRED AT FACTORY
- HEAVY-DUTY TUBULAR SUPPORT FRAME

OPTIONS

- OVERHEAD STORAGE TO SIX COMPARTMENTS
- OVERHEAD STORAGE CAPACITY TO 205 TONS
- 30" X 50'-0" CONVEYOR FOR ADDITIONAL DISCHARGE HEIGHT
- BIN LEVEL INDICATORS
- MANUAL AND AUTOMATIC CONTROL SYSTEMS
- DIGITAL READ-OUT FOR WEIGHT BIN
- WEIGHTED WATER SYSTEM IN LIEU OF METERED
- 15 HP AIR COMPRESSOR WITH AFTER COOLER AND AUTOMATIC DRAIN
- CENTRAL LUBRICATION SYSTEM
- HEAP PLATES FOR OVERHEAD BINS
- TURNHEAD WITH SAFETY DECK AND CONTROLS
- ELECTRIC VIBRATORS
- URETHANE OR AR STEEL BIN AND BATCHER WEAR LINERS
- CUSTOM DESIGNED EQUIPMENT FOR SPECIAL APPLICATIONS

SPECIFICATIONS FOR APACHE BATCH PLANT

- THREE COMPARTMENT 59 CU.YD (80 TONS)
- CLAMSHELL TYPE GATE WITH REPLACEABLE GREASE-TYPE PIVOT PINS AND BRASS BUSHING FOR EACH BIN
- AIR CYLINDER AND SOLENOID FOR EACH OVERHEAD BIN GATE
- 12 CU. YD. BATCHER WITH DOUBLE DISCHARGE GATE
- TWIN AIR CYLINDERS WITH INCHING SOLENOID FOR AGGREGATE BATCHER
- AIR VIBRATOR WITH SOLENOID FOR BATCHER
- 30" X 40'-0" CONVEYOR WITH 15 HP DRIVE
- CEMA "B" CLASS IDLERS FOR CONVEYOR
- 3" TURBINE TYPE WATER METER WITH PLUSE HEAD INLET WATER STRAINER AND VALVE
- 10 HP AIR COMPRESSOR WITH 120 GALLON STORAGE TANK
- REQUIRED AIR LINE FILTER, LUBRICATOR AND REGULATORS FOR AIR COMPONENTS
- ENCLOSURE FOR SOLENOIDS EACH EQUIPPED WITH SAFETY CUTOFF VALVES
- NEMA 4 ENCLOSURE, MOTOR STARTER AND MAIN DISCONNECT
- SOLENOID VALVES PRE-WIRED AT FACTORY
- HEAVY-DUTY TUBULAR SUPPORT FRAME

OPTIONS

- OVERHEAD STORAGE TO SIX COMPARTMENTS
- OVERHEAD STORAGE CAPACITY TO 180 TONS
- 30" X 50'-0" CONVEYOR FOR ADDITIONAL DISCHARGE HEIGHT
- BIN LEVEL INDICATORS
- MANUAL AND AUTOMATIC CONTROL SYSTEMS
- DIGITAL READ-OUT FOR WEIGHT BIN
- WEIGHTED WATER SYSTEM IN LIEU OF METERED
- 15 HP AIR COMPRESSOR WITH AFTER COOLER AND AUTOMATIC DRAIN
- CENTRAL LUBRICATION SYSTEM
- HEAP PLATES FOR OVERHEAD BINS
- TURNHEAD WITH SAFETY DECK AND CONTROLS
- ELECTRIC VIBRATORS
- URETHANE OR AR STEEL BIN AND BATCHER WEAR LINERS
- TRANSPORTATION SYSTEM FOR PORTABLE APPLICATIONS
- CUSTOM DESIGNED EQUIPMENT FOR SPECIAL APPLICATIONS

**Liddell
Industries, Inc.**
4306 U.S. 377
Brownwood, TX 76801



(866) **817-7838**

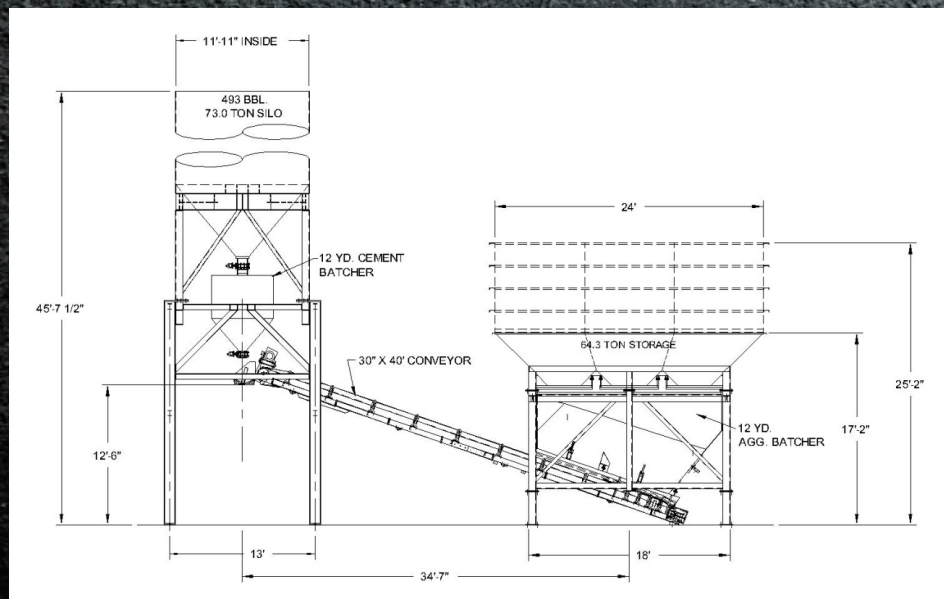
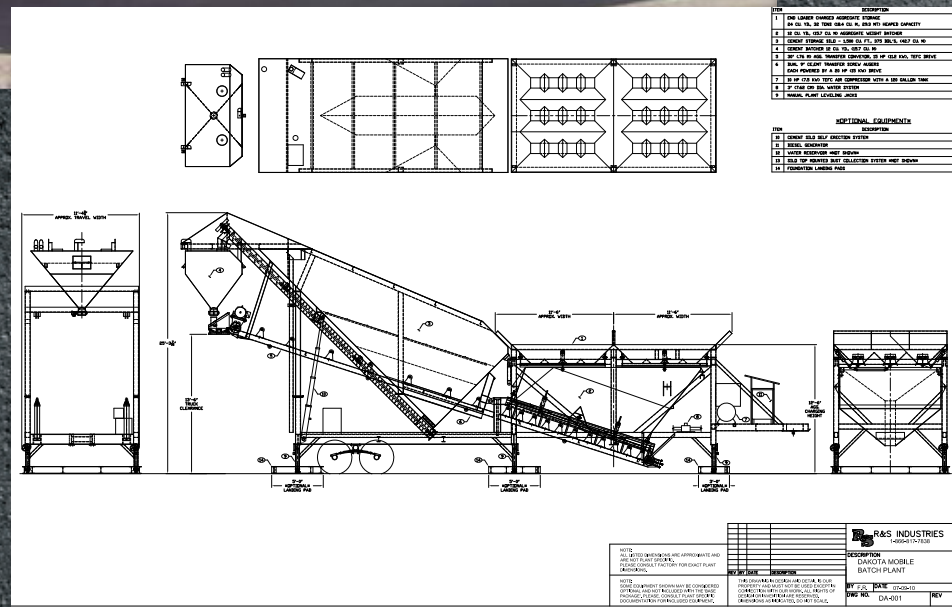
www.liddellindustries.com

Brownwood, Texas

www.liddellindustries.com



DAKOTA



APACHE



LIDDELL

CONCRETE BATCH PLANTS

Loadcraft specializes in total design and manufacturing of 250-2000HP Drilling and Workover Rigs, as well as Trailers, Dollies, Beams, and Multi-Axle Components to support the Heavy Haul and Oilfield Transportation Industries, and Concrete Batch Plants.

Our world class machine shop can also build or repair any type of oilfield, wind energy, or other mechanical products with quality and excellence.

MISSION STATEMENT

Our goal is to build the best American product, with the best people, for the best customers all around the world. We seek to promote human relationships through business relationships, with people from different cultures, with different Faiths, from all different parts of the world, as well as with the people in our very midst. Our very top priority is to daily, demonstrate the character of Christ in our business and personal lives, without being dogmatic or offensive.



**115 COMANCHE BATCH PLANT
720 ARROWHEAD SILO**



**APACHE BATCH PLANT
943 ARROWHEAD SILO
& 720 AUXILIARY SILO**

