



:JETI 3020 TITAN

The ultimate upgradeable high resolution production UV-inkjetprinter with Flat To Roll option.

The :Jeti Titan challenges perceptions of what a printer can do for your business, delivering high resolution quality, high production speeds and uniquely the ability to increase the speed and capabilities of your Titan as your business grows.

The Titan range starts with a 16 head unit delivering an impressive 1,087 sqft/hr (101 m²/hr) and is field upgradeable with white, light colours, orange and more CMYK heads, to a massive 48 heads, giving 2,282 sqft/hr (212 m²/hr).

Titan offers different levels of speed and capability, allowing you to tune your Titan to your exact business needs.

Moreover the Titan has a Flat to Roll option that will give you the ability to print roll materials with the same high quality and resolution.

You win a big new contract and need more capacity or even higher quality images for art reproduction, POP, etc... Simply upgrade your Titan quickly and efficiently in your facility. Titan's unique field upgradeability, until now only available on the :M-Press, allows you to maximize your return on investment by allowing you to protect your original investment when you upgrade.

Allureas

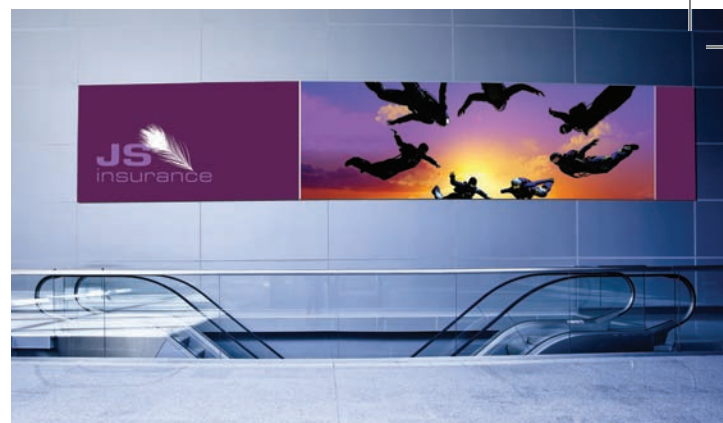
In-store Communication

No compromise on image quality

The Titan delivers no compromise high resolution - 8 pico liter at a native 600 dpi and can deliver 1200 dpi for photorealistic image quality and fine text down to 4pt positive and negative whilst still delivering intense band free solids.

With this new head technology you will be able to satisfy even the most demanding customers. With up to 48 print heads, the Titan can give you the flexibility of multi colour, gamut expanding colour or white ink allowing increased flexibility and broadening the applications you can support.





Outdoor Communication

Protect your investment – say goodbye to forklift upgrades

We understand that a high volume inkjet printer is a strategic investment for your business, what you do not want is to have to replace it when your business needs change before you have amortised that investment. As your business grows your strategy needs to evolve to suit changed circumstances. With the Titan you can either grow your business by upgrading to a higher level of productivity, or you can tune your Titan to your growing business needs. The entry level unit can be upgraded to a variety of different configurations. Depending on your applications, your customers' demands or your business plans you can choose to upgrade different ranges of speed and or functionalities. Upgrading is fast and efficient; we can install any of the upgrades in your premises and have you back and fully operational with your upgraded capacity, operational extremely fast. Here is an overview of the amazing range of possibilities that you can have with the Titan.

Choose your ideal :Jeti 3020 Titan configuration

1	16 Ricoh Heads	CMYK	Entry level high quality printing
2	20 Ricoh Heads	CMYK W	High quality printing with white
3	32 Ricoh Heads	CMYK	Very high speed CMYK printing
4	36 Ricoh Heads	CMYK W	Very high speed CMYK printing with white
5	40 Ricoh Heads	CMYK W W	Very high speed CMYK printing with enhanced white throughput
6	48 Ricoh Heads	CMYK Ic Im	Very high speed printing with light colours
7	48 Ricoh Heads	CMYK Orange W	Very high speed with broader gamut and white



Outdoor Communication



In-store Communication



Outdoor Communication



In-house Decoration

Extended light colour printing

The addition of light cyan and light magenta will expand your range of colour gradations. You will be able to print more grey levels than before for more realistic, smoother skin tones and subtle dégradées. Adding light cyan and light magenta enhances the print quality considerably, producing a more photo-realistic image. If high level art, fashion and cosmetics are your market, this is the upgrade for you.

In-line White ink printing

Imagine being able to print on any flat object or media, regardless of base colour.

White ink capability offers a print shop owner the ability to sell high value, backlit graphics and window clings on rigid and flexible media. White ink also gives printers with flatbed printers the ability to create specialty applications on almost any media or object. Doors, wood, glass, plexi-glass, tiles, stone, cardboard, metals – the list is endless. The Titan allows you to run single white, pre- and/or post white according to your application. White ink printing - it's real and it's profitable, and if you print window graphics for retail, it's a must-have capability.

Extended colour printing

Extending the colour range with orange considerably expands the colour gamut of your printer for better colour reproduction, allowing you to hit more spot, Pantone™ and corporate colours accurately. Designers can more closely render in print what they conceived in their mind and you can achieve colours that previously needed screen or offset printing to satisfy print buyers. For ultimate colour range this is the option to choose.



In-house Decoration

Robust mechanicals for accurate print results

The :Jeti 3020 Titan is built on a new robust steel framed platform with advanced linear motion technology to achieve the greater accuracy needed for accurate 8 pico liter drop placement. Completely redesigned from the ground up, the Titan includes the latest in advanced digital encoders and linear motors to deliver unparalleled dot placement accuracy to match the quality the market needs today and with tomorrow in mind. The latest safety features and enhanced UV light screening makes the Titan not just the most reliable but the safest new partner for your business.

Advanced Electronics

The new electronics platform on the :Jeti 3020 Titan is designed for the future. With processor upgrade capability the Titan has the power to keep your system running at top speed into the future. This power is not just for imaging, the Titan also features automatic head height adjustment so as you switch substrates the Titan adjusts as well with no loss of time.

The laser media height detection system can automate the set up of new medias and check for damaged board edges. In-line shuttle safety sensors protect the printheads from inadvertent strikes.

Multiple board

With the :Jeti 3020 Titan you can print multiple boards simultaneously, saving time and boosting productivity. Print three 61 x 41 inch boards side by side at the same time. Retractable register pins help the operator to position the rigid material perfectly in place, accurately and consistently board after board. The flatbed architecture can print anything flat up to two inches (5 cm) thick with a maximum dimension of 2m x 3m.



In-house Decoration

FTR (Flat to Roll) Option for more flexibility

The Flat to Roll option gives you the ability to print roll materials with the same high quality and resolution as rigid materials, without losing speed, enabling you to print banners. The FTR option can handle rolls up to 250 lbs (113 kg) so you can buy media economically and compete in more markets.



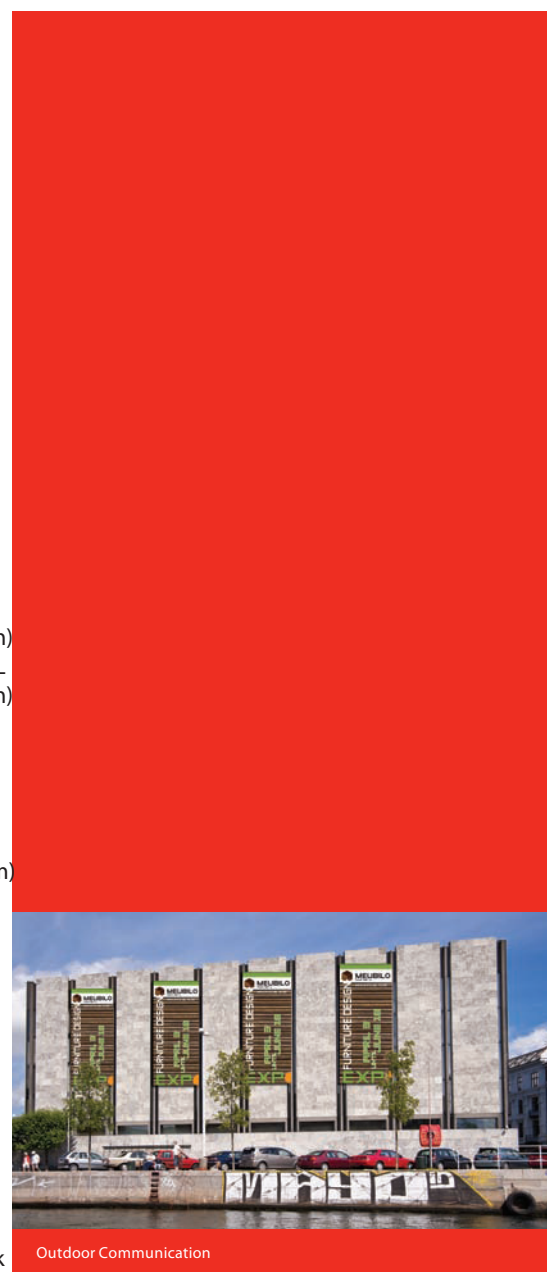
:Jeti 3020 Titan in its FTR configuration.



:Jeti 3020 Titan FTR

:JETI 3020 Titan

	Technical specifications
Head Technology	16, 20, 32, 36, 40, 48 Ricoh Piezoelectric Generation 4 heads
Print Resolution	Prints high quality up to 1200 dpi
Media Dimensions	Max size: 124 x 81 inches (3.15 x 2.05 m)
Printing Area	Flatbed: 122" x 79" (310 cm x 200 cm) Rolls: 126" (320 cm)
Max thickness	2" (5 cm)
Media Types	Reinforced vinyl, pressure sensitive vinyl, canvas, fabrics, foamboard, corrugated board, lenticular, tile, drywall, glass, sheet metal, paper and more
Printing Speeds	Up to 2,282ft ² /hr (212 m ² /hr)
Weight	Titan only Weight: 8,850 lbs (4,014 kg) Add 2,600 lbs (1,179kg) for crating Titan FTR only Weight: 1,308 lbs (593 kg)
Dimensions	Uncrated Dimensions 77.5" H x 95.5" W x 258" L (197 cm x 243 cm x 655 cm) Crated Dimensions: 86" H x 101.5" W x 264.5" L (218 cm x 258 cm x 672 cm) Titan with FTR Dimensions: 77.5" H x 167" W x 258" L (197 cm x 424 cm x 655 cm) FTR only Crated dimensions: 38" H x 83.5" W x 177" L (96.5 cm x 212.1 cm x 450 cm)
Power Consumption	25 KVA (35A)
Electrical Requirements	400Y / 230V, 3 Phase 50/60 Hz
Rips	All our printers come with a wide choice of Rips depending on your applications and your existing workflow
Compressed Air	100 PSI minimum - 150 PSI (7-10 bar) maximum with a 10 gallon (40 liter tank) 15 cfm peak
Inks	Inks Shelf life is 1 year for UV Inks
Services	Please contact your local dealer to learn about Agfa Graphics' Global Services Support Network



Outdoor Communication