

# • Jeti Titan S

# • Jeti Titan HS

The next generation of the industry-leading true flatbed at an unequalled price/productivity ratio.

# Jeti Titan S / HS

**Ultra-reliable 6-color true flatbed UV inkjet wide-format printer bringing superb quality and speed at the sharpest price**



In-store communications - forex

The new Jeti Titan S and HS true flatbed six-color UV-inkjet printers for indoor and outdoor applications combine exceptional print quality and high speed for an unbeatable price/performance solution. The robust build quality engines incorporate the latest generation in inkjet print heads (Ricoh Gen 5) and come with double white as standard. While the Jeti Titan S is equipped with one row of print heads, the Jeti Titan HS has two rows offering even higher productivity.

The Jeti Titan S and HS have a 'flat-to-roll' option that will give you the ability to print flexible media up to 3.2m (126") wide with the same high quality and resolution.

All Jeti printers are part of a complete package which also includes Asanti workflow and dedicated inks – all designed to work together to ensure the best results and maximum productivity for a predictable income.



Outdoor communication - banner



In-house decoration - canvas

### **Modular head configuration with field upgradeability**

The Jeti Titan S (S for speed) features a single row of heads with 6 colors plus white, yet is field upgradeable to two rows of 6 colors plus white, thus becoming a Jeti Titan HS (high speed). Under the hood are the latest generation inkjet print heads, the Ricoh Gen 5 (1,280 nozzles vs. 384 in Gen 4).

### **Full speed 6-color printing with white on board**

Both the Jeti Titan S and HS come standard with full-speed six-color printing (high fidelity CMYKLcLm). The addition of light cyan and light magenta expand the range of color gradations, making it possible to print more grey levels for more realistic, smoother skin tones and subtle dégradées, producing more photorealistic images. This is extremely interesting for high-value work like POP viewed at close range or if high-level art, fashion or cosmetics are your market.

Also default in both models is (pre- and post) white printing, which is supported in different modes, and can include overprint, under-print, spot, under-spot, fill and over-spot for rigids and pre-white for roll media.



In-house decoration - dibond





### Reliable white ink system

The Jeti Titan's white ink system is designed to eliminate the resettling problems associated with the components of white ink.

The white ink bulk tank is in constant motion using a stirring mechanism. Constant circulation flow through the lines all the way to the heads is maintained at an optimized ink temperature to keep nozzles from clogging.

### Unparalleled print quality

With its highly accurate drop placement and a 7 pico liter spot size, the Jeti Titan S/HS takes the high quality of the previous Jeti Titan engines a step further still. It can print fine text down to 4pt positive and negative and delivers six-color high-fidelity printing at 720 x 1200 dpi for photorealistic image quality.

It is therefore ideal for the production of close-viewed output such as quality point-of-purchase as well as high resolution backlit applications (day-and-night). Additionally, the printer is designed for high productivity wide-format applications such as general displays.

### True flatbed with robust industrial build

The Jeti Titan S and HS have a 2 x 3m true flatbed design for optimum registration and repeatability. The moving table concept uses the latest generation of Ricoh Gen 5 print heads, motion drive and curing technology. The printers' frames are based on tubular solid steel for seven day/three shift endurance.



In-house decoration - Wood



In-house decoration - Foamboard



In-Store communication - Textile

**Flat-to-roll option for even more flexibility**

Giving you even more production flexibility, the 'flat-to-roll' (FTR) option makes it possible to print roll material up to 3.2m (126") wide with the same high quality and resolution as rigid materials. The FTR option can handle rolls up to 250 lbs (113 kg) so you can buy media economically and compete in even more markets.

**Dedicated inks**

The Jeti Titan engines work perfectly together with Agfa Graphics' fast-curing Anuvia UV-curable inks that are designed specifically for high-end production platforms. Anuvia inks offer great resistance to chemicals and abrasions and they give you good adhesion on the substrate. Their sharp, vibrant colors combine high fade resistance and excellent lightfastness.

The Jeti Titans support the full range of industry standard rigid and flexible media.

**High-tech knowledge always at your finger points**

The flagship of Agfa Graphics' inkjet portfolio builds on our extensive R&D knowledge and is serviced by one of the industry's most comprehensive support organizations.



FTR (Flat-to-Roll) option





In-house decoration - Forex

### Advanced electronics

The new electronics platform in the Jeti Titans is designed for the future, with many features that optimize the engines' printing performance:

### Anti-static reliable printing

Surface static energy is a known adversary in UV printing. Undesirable effects include "misting", dust artifacts, fuzzy images and type or even "ghosted" images. Many of today's rigid media are susceptible to static charge, especially in the dry colder months. No need to worry about this with the Jeti Titan S and HS' antistatic system. Mounted right on the carriage to pass over your media before jetting, both negatively and positively charged areas of your media are neutralized.

### Auto head height prevents head impact

Adjusting the carriage height to account for the differences in media thickness can be a time-consuming task. Not doing it can lead to head strikes though, while over-compensating by raising the heads will impact image quality. With the auto head height system, an optical laser mounted on the carriage is used to measure the high point on the media's surface. The software then automatically adjusts the carriage height to optimize image quality while eliminating the risk of head strikes due to imperfect media.



In-house decoration - dibond



Outdoor communication - banner



In-Store communication - Foamboard



### Shuttle safety sensors

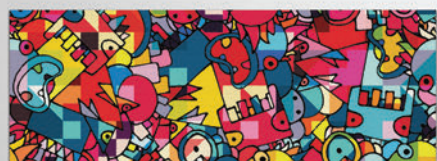
The in-line shuttle safety sensors prevent print heads from touching the substrate. This will prevent damage to the precious heads in case you are working with media that are susceptible to temperature, light conditions or to humidity for instance.

The media detection sensor instantly detects any obstacle in the carriage's path. When activated, the auto-recovery function takes over and re-homes the carriage and table, so you are printing again right away. Whether operator error has left an obstruction in the imaging area, or tape or media has curled, your investment will be protected by an instant braking of the carriage to avoid head replacement, repairs and downtime.

### Advanced GUI design

The industry-renowned intuitive GUI of Agfa Graphics' printers provides the ultimate in functionality: scaling, stepping, reprints etc – default delivered with Asanti Render and designed to integrate with the full Asanti workflow, while also being open to third-party RIPs.

Asanti workflow is a new concept for wide format printing job management. Asanti workflow provides new time saving functionalities such as the ability to prepare future jobs while printing other jobs, keeping track of copies printed for billing and inventory management, attaching notes with special instructions to the job and many more features.



In-house decoration - canvas



## Jeti Titan S & Jeti Titan HS

### MEDIA DIMENSIONS

- Flatbed: 122" x 79" (309 cm x 200 cm)
- Rolls: 126" (320 cm)

### PRINTING AREA

- Flatbed: 122" x 79" (309 cm x 200 cm)
- Rolls: 122" (309 cm)

### MEDIA TYPES

Reinforced vinyl, pressure sensitive vinyl, canvas, fabrics, foamboard, corrugated board, lenticular, tile, drywall, glass, sheet metal, paper and more

### MAX THICKNESS

2" (5 cm)

### PRINTING SPEEDS

Up to 1,723 ft<sup>2</sup>/hr (160 m<sup>2</sup>/hr)

### COMPRESSED AIR

100 PSI minimum - 150 PSI (7-10 bar) maximum with a 10 gallon (40 liter tank) 15 cfm peak

### IMAGE QUALITY

Prints high quality up to 720 x 1200 dpi

### INKS

Anuvia inks  
CMYK LcLm  
White  
Inks Shelf life is 1 year for UV Inks

### HEADS

Piezoelectric Ricoh Gen 5 heads

### DIMENSIONS

- 77.5" H x 95.5" W x 258" L  
(197 cm x 243 cm x 655 cm)
- Jeti Titan S / HS with FTR Dimensions  
77.5" H x 167" W x 258" L  
(197 cm x 424 cm x 655 cm)

### WEIGHT

- Jeti Titan S / HS only  
8,850 lbs (4,014 kg)
- Jeti Titan S / HS FTR only  
1,308 lbs (593 kg)

### ELECTRICITY - POWER CONSUMPTION

400Y / 230V, 3 Phase 50/60 Hz  
25 KVA (35A)