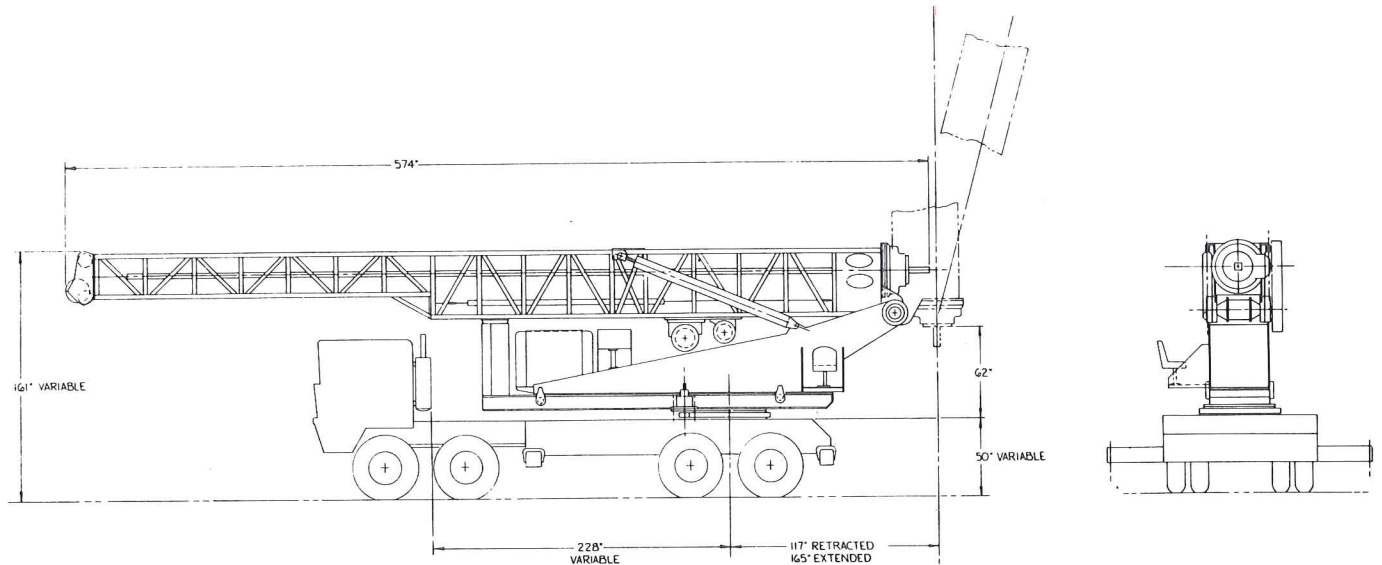




# MODEL 3000 - CARRIER MOUNTED



**POWER UNIT**—Detroit Diesel, 190 bhp at 2500 rpm with Allison torque-converter driven, powershift transmission, 4 speeds forward and 1 reverse, oil cooled.

**SWING**—360 degree with hydraulic swivel.

**HYDRAULIC SLIDE (Radial Positioning)**—46 inches [116.84 cm].

**KELLY CROWD**—24,000 lbs. [10,886.4 kg] (30,000 lbs. [13,608 kg] optional).

**AUXILIARY WINCH**—11,000 lbs. [4,989.6 kg] capacity.

**ROTARY TORQUE**—100,000 + ft. lbs. [135,600 Nm] max. (theo.).

**ROTARY SPEED**—200 + rpm max. (theo.).

**ROTARY DRIVE**—Watson roller clutch type, providing free kelly feed with torque applied.

**DRILL DEPTH**—105 ft. [32.004 m] with 3 piece kelly (35 ft. [10.668 m] with one piece, 65 ft. [19.812 m] with 2 piece are optional).

**APPROXIMATE DRILL UNIT WEIGHT**—40,000 lbs. [18,144 kg].

**LINE PULL (Kelly)**—20,000 lbs. [9,072 kg] on grooved drum (24,000 lbs. [10,886.4 kg] on bare drum).

**MOUNTED**—On a suitable crane carrier with integral outriggers.

**WATSON, INC.**

P.O. Box 11006 • 4015 S. Freeway • Fort Worth, Texas 76110 U.S.A.  
(817) 927-8486 • CABLE WAMCO • TWX 910-893-4025 • WATSON FTW

**INDUSTRY'S INTERNATIONAL STANDARD OF EXCELLENCE**

