



HCM

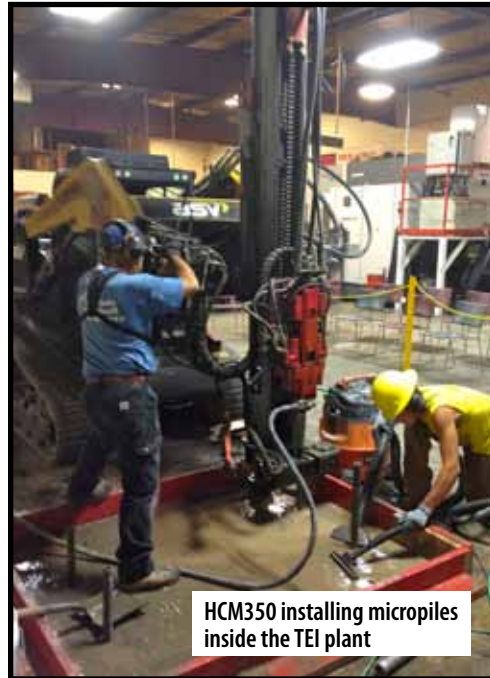
HYDRAULIC DRILLING ATTACHMENT FOR SKID STEER LOADERS

Ground Engineering, Rock Drilling, Fencing

HCM | HYDRAULIC DRILLING ATTACHMENT FOR SKID STEER LOADERS



Optional clamp and breaker



HCM350 installing micropiles inside the TEI plant



HCM Working on a Barge



RDS550 rotary head

Standard Features of the HCM:

- TEI Patented Drifters or Rotary Heads
- TEI Cylinder or Chain Style Feed System
- HCM Mount with 360-degree Positioning
- Manually Operated Hydraulic Controls

Optional Features of the HCM:

- Radio Controlled Hydraulic Valves
- Single Hydraulic Foot Clamp
- Double Clamp and Breaker
- Dust Suppression System

HCM | HYDRAULIC DRILLING ATTACHMENT FOR SKID STEER LOADERS



Manual Hydraulic Controls



Universal Mounting Bracket



HCM Mining on the Surface



HCM Mining Underground



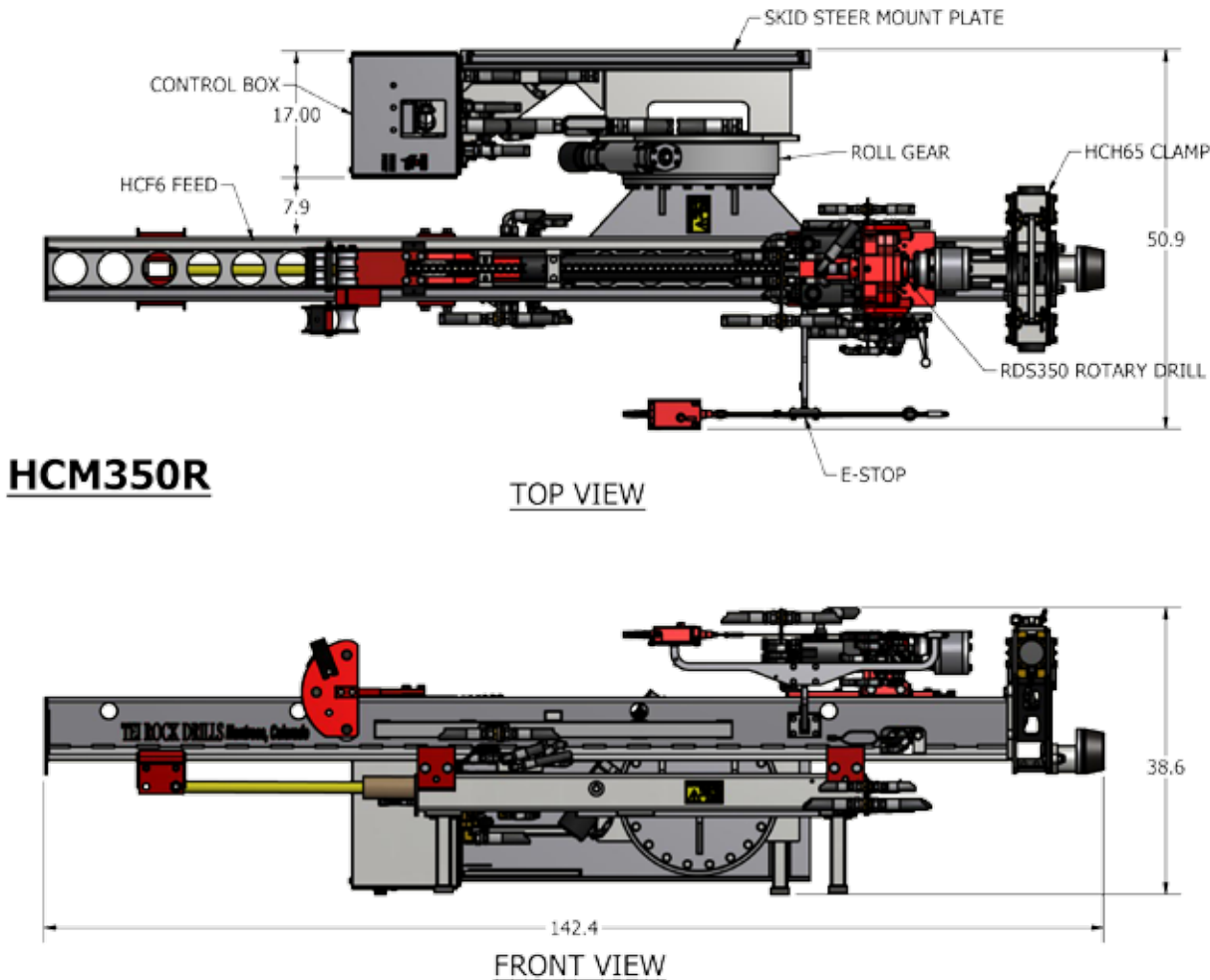
HCM Installing Marine Pile
with Radio Remote

The HCM Skid Steer Drill is designed to maximize the utility of these popular machines. Manufactured with the universal mounting plate the HCM fits most any model of skid steer. The HCM uses either TEI's patented drifters or the RDS line of rotary heads. With so many options for drill heads the HCM is capable of most popular drilling methods. Grouted Hollow Bars, Augers, Coring, Rock Drilling and Mud Rotary are just a few of the applications available on the HCM.

HCM

|

HYDRAULIC DRILLING ATTACHMENT FOR SKID STEER LOADERS



HCM DRILL TOOL WITH HCF6 FEED

	US	METRIC
HCM350 System Flow and Pressure	35 GPM @ 2250 PSI	132 LPM @ 155 BAR
HCM350R System Flow and Pressure	25 GPM @ 3000 PSI	95 LPM @ 207 BAR
HCM350 Hole Size	1.375" to 3.0"	35mm to 76mm
HCM350R Hole Size	2.75" to 8.0"	70mm to 203mm
HCF6 Drill Length	9.8 feet	3.0 meters
HCF6 Travel	6.0 feet	1.83 meters
HCF6 Pullback	4900 lbs.	2222 kgs.
Approximate Drill Tool Weight	2200 lbs.	997 kgs.

ALL ATTACHMENT CARRIERS MUST BE PLUMBED WITH LOW PRESSURE RETURN AUXILIARY HYDRAULICS.
AN ADDITIONAL HYDRAULIC OIL COOLER IS RECOMMENDED FOR PRODUCTION DRILLING.