

MAIT

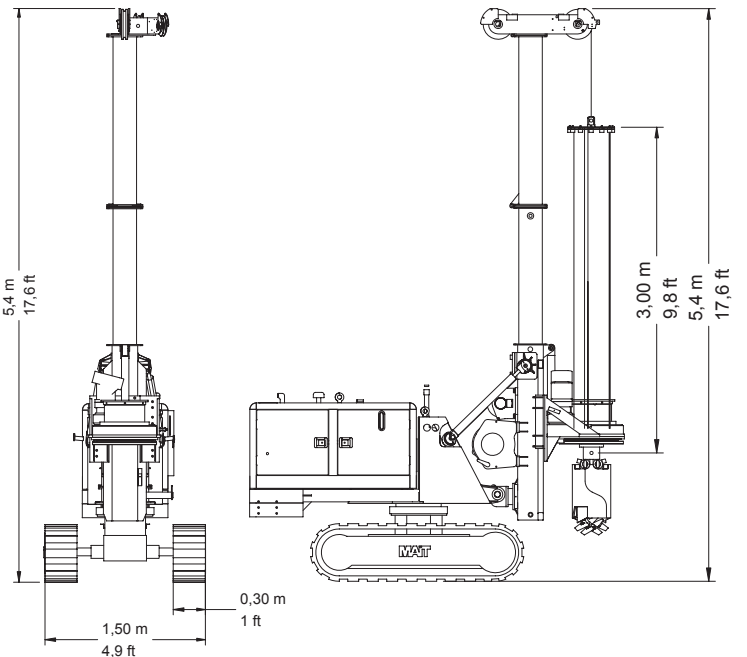
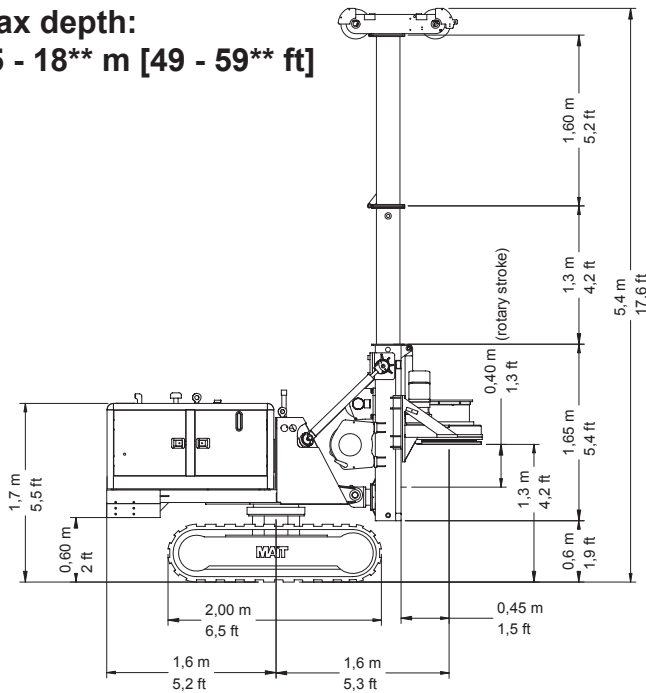
BABY DRILL



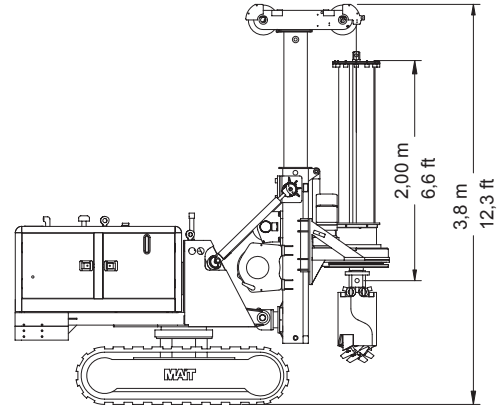
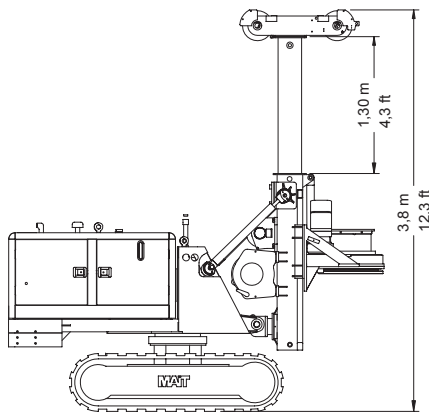


WORKING CONFIGURATIONS

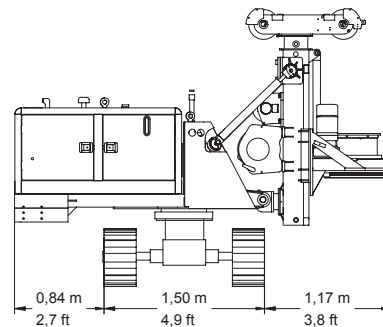
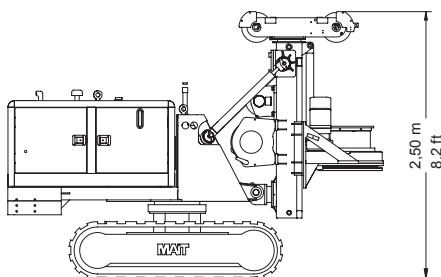
Max depth:
15 - 18** m [49 - 59** ft]



Max depth:
12 m [39 ft]



Max depth:
6 m [20 ft]



The **BABY DRILL** is the most perfect limited access rig on the market. This rig can get in areas where large machines only dream of entering such as inside elevator shafts, inside buildings, and under low roof and low headroom conditions.

With it's very compact size, it can enter through a 3.3 ft wide door. The **BABY DRILL** is operated by wireless remote controlled which allows the operator to maneuver the machine from a distance.

Technical Data

Rotary:

Nominal torque	17,5 KNm	12,900 lbsft
Max nominal pulldown	40 KN	9,000 lbs
Max nominal pullback	23 KN	5,175 lbs
Unloading speed	80 rpm	

Winches:

Main winch nominal pullback	25 KN	5,625 lbs
Auxiliary winch nominal pullback	10 KN	2,250 lbs

Diesel Engine:

YANMAR*

Power	28,8 KW @ 2.400 rpm	39 HP @ 2,400 rpm
Hydraulic oil tank	70 liters	18.5 gal
Fuel Tank	48 liters	12.7 gal

Expandable Crawler:

Length	2.000 mm	6.5 ft
Width	1.000 - 1.500 mm	3.3 - 4.9 ft
Shoes	300 mm	1 ft

Approx. Weight:	5,4 tons	11,900 lbs
------------------------	----------	------------

* upon request with 30 KW electric motor

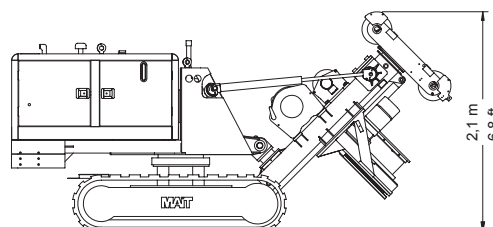
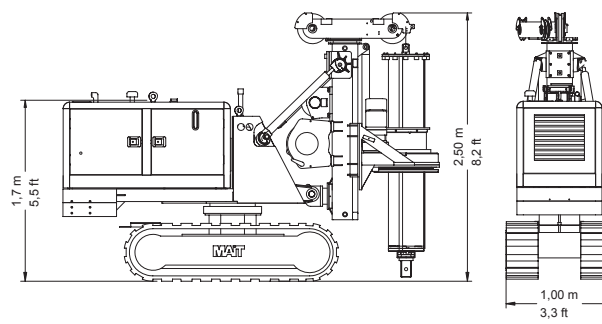
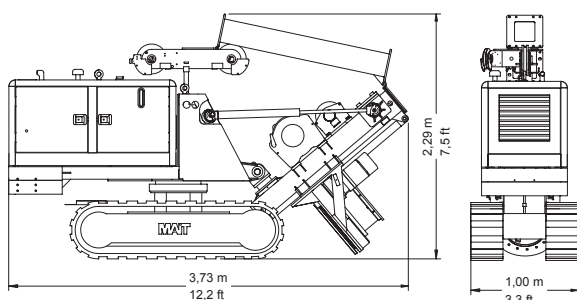
Working Characteristics

Works with Augers & Buckets:

Max diameter	400 / 600 mm	15 / 24 in
Depths	12 - 15 - 18** m	39 - 49 - 59** ft

** with friction kelly bar

TRANSPORT CONFIGURATIONS

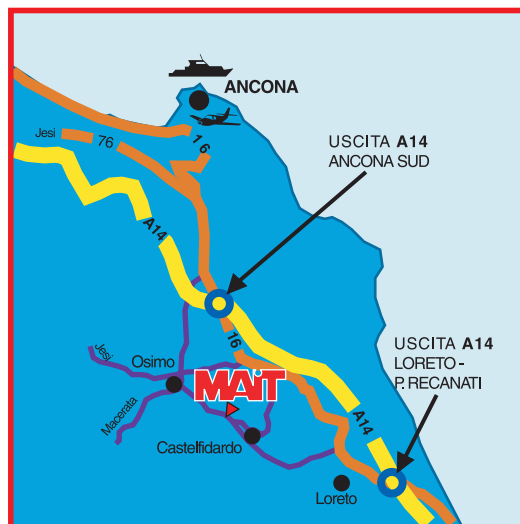


The power pack can easily be dismounted from the machine and left outside of the building in order to protect the operators from being intoxicated by the engine's emissions.

Another special feature of the BABY DRILL is that the mast is telescopic which allows the BABY DRILL to reduce or increase it's height according to the headroom and kelly bar requirements.

The BABY DRILL can be equipped with steel crawlers or upon request with rubber tracked crawlers.





MAIT also manufactures:

- Hydraulic drilling rigs of every size:
 - for piling, diaphragm walls, continuous flight augers;
 - for water wells;
 - for soil investigation, consolidation, civil engineering;
 - jet-grouting;
- Casing oscillator;
- Power pack;
- Casing tubes;
- Augers and buckets;
- Hydraulic grabs for diaphragm walls;
- Continuous flight auger;
- Tremie pipes;
- Drilling tools and accessories;



MAIT S.p.A. DRILLING RIGS

Via Flaminia Seconda n° 149/153

P.O. Box 1040 – 60027 OSIMO (AN) ITALY

Tel.: +39 071 7822186 – Fax: +39 071 780535

Web: <http://www.mait.it> – e-mail: info@mait.it