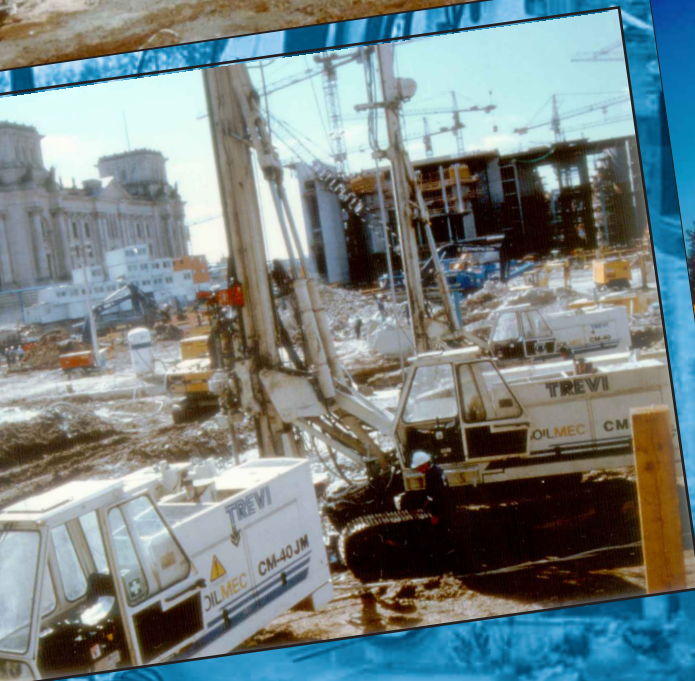


CM-40JM

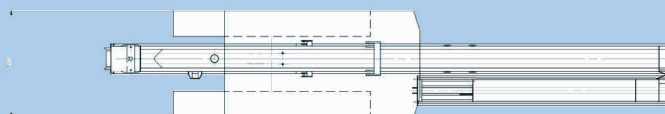
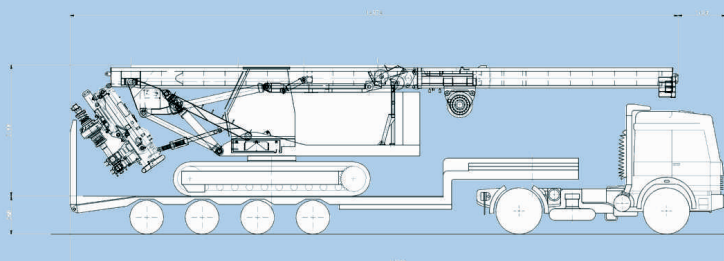
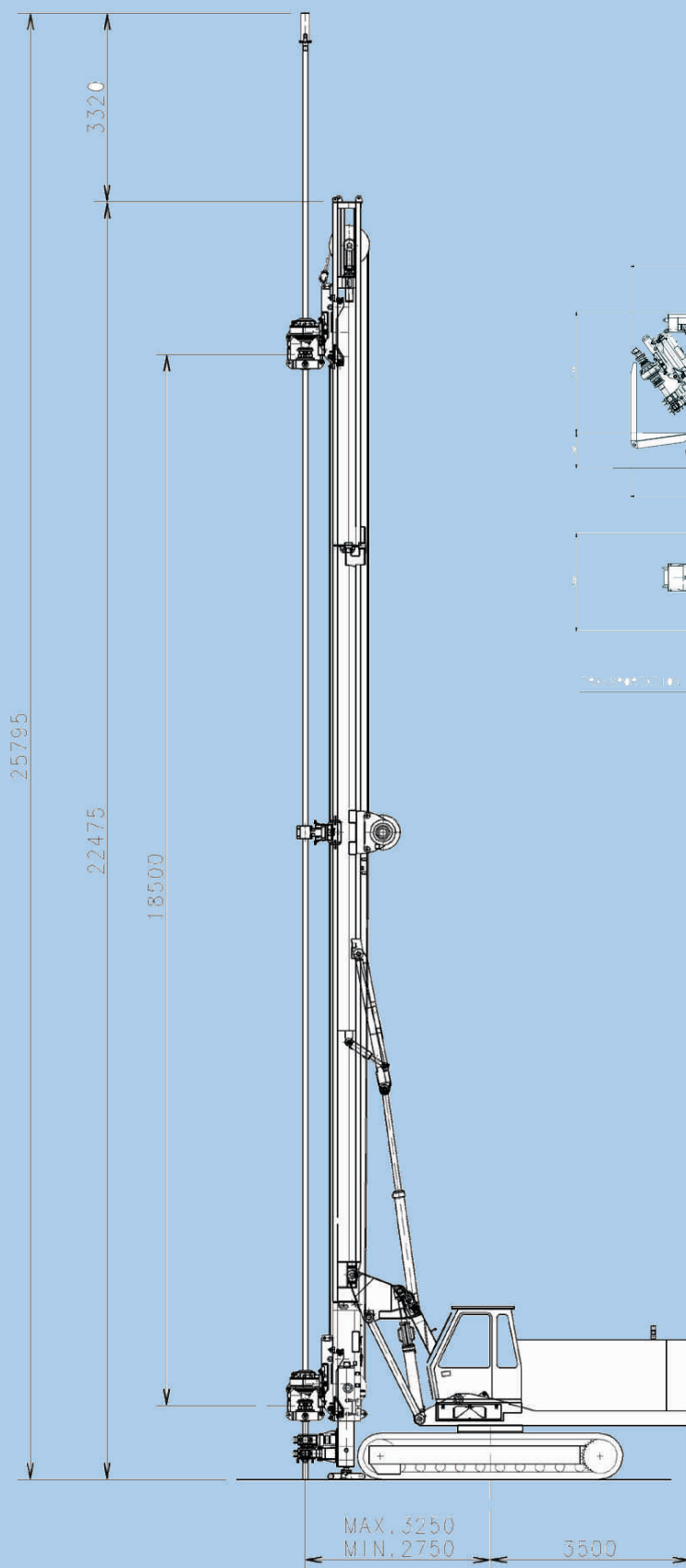
Attrez. per Micropali, Jet Grouting, Dreni
Micropile, Jet-Grouting, Drains equipment



SOILMEC 

Attrez. per Micropali , Jet Grouting, Dreni Micropile, Jet-Grouting, Drains equipment

SINGLE ROD INJECTION - 22000 MAX DEPTH OF TREATMENT



TRANSPORTED IN 10000 LBS. (4500 KG) - 10000 LBS. (4500 KG)

Service winch

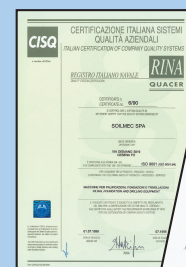
| | | |
|--------------------------------------|-------|----|
| Max pull (on 1 st layer) | kN | 24 |
| Max speed (on 3 rd layer) | m/min | 92 |
| Rope diameter | mm | 22 |
| Rope length | m | 69 |

Clamp and joint breaker

| | | |
|-------------------------------|-------|--------|
| Nominal size | mm | 60-315 |
| Max clamping force (setting) | kN | 192 |
| Max breaking torque (setting) | daN.m | 4380 |

Total weight

| | | |
|------------------------|----|--------|
| Standard configuration | kg | 35.000 |
|------------------------|----|--------|



Sistema di Qualità Certificato
Certified Quality System

Dal 1990 la Soilmec si è uniformata alle normative previste dal Sistema di Qualità ISO 9001/UNI 29001. In 1990 Soilmec was awarded the certification of its own Quality System to ISO 9001/UNI 29001 series standards.

CM-40JM

The **CM-40JM** is designed to provide a comprehensive response to the growing demand of installing micropiles and performing jet grouting treatments with main larger diameters and depths.

Main characteristic :

- ▶ **Depth of 51 m** without manual operations;
- ▶ **Fully self-erecting 23 m long mast;**
- ▶ **Rotary feed stroke: 18.5 m;**
- ▶ **Rotary torque: 2400 kgm;**
- ▶ **Rod feeder for 2 x 16 m rods;**
- ▶ **70 % increase in output** thanks to reduction in downtime;
- ▶ **60 % reduction in assembly** and disassembly times on appropriate sites.

Additional technical features

Two hydraulic power pumps (180 + 180 l/min) with variable displacement and constant power.

Load sensing hydraulic system, reducing pump delivery by 90% when the levers and controls are in neutral position sending the oil to the discharge outlet.

This leads to reduced fuel consumption, less load loss in the hydraulic circuit, lower temperature, longer pump life and reduced noise levels.

All the movements are controlled by **electro-hydraulic proportional joysticks**, allowing the operator to work in the easiest way.

Hydraulic rotary table with variable-displacement motor and epicyclic reduction gear.

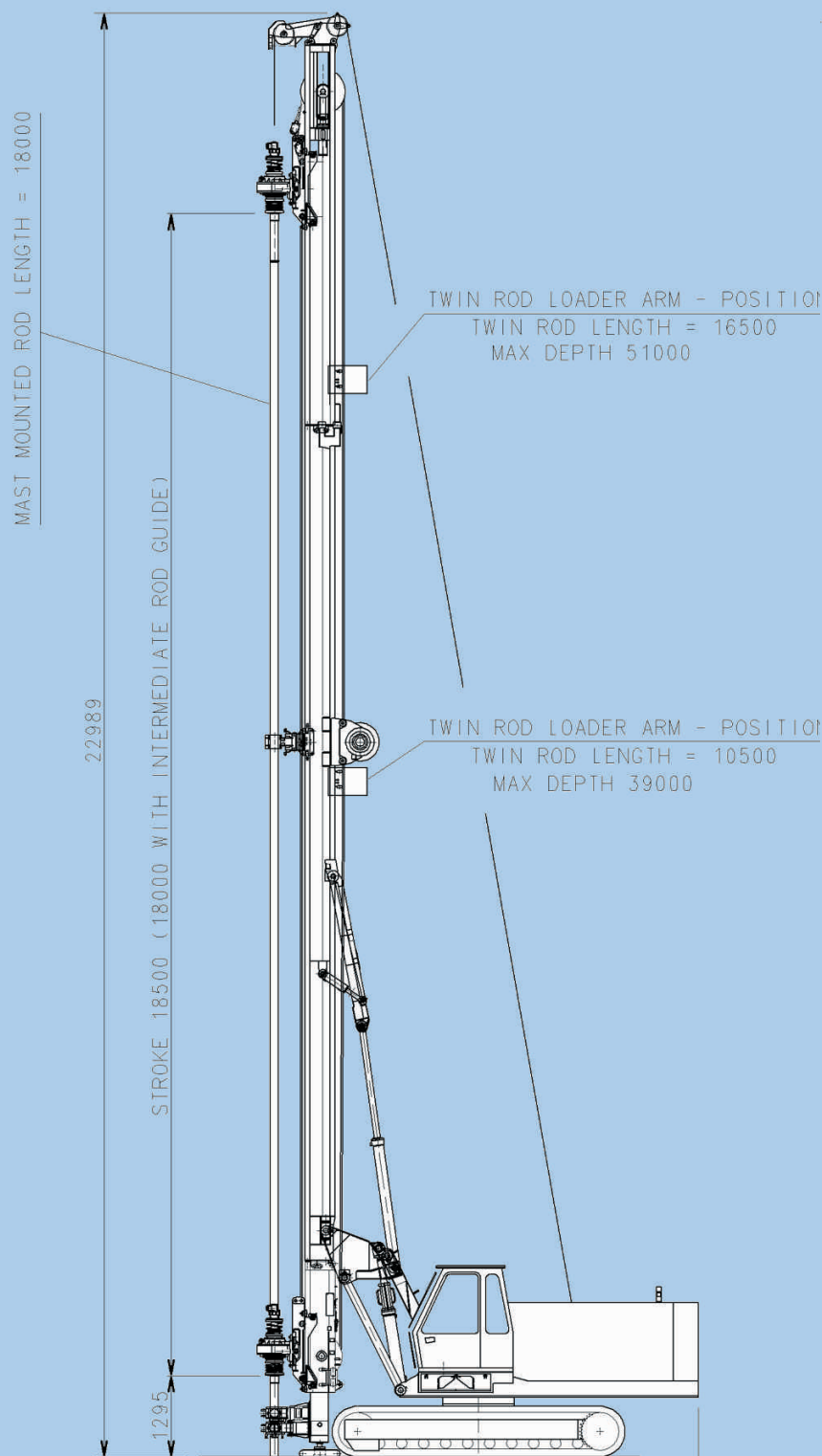
- **max. torque: 2400 kgm**
- **4 speeds: 0 + 38; 0 + 63; 0 + 125; 0 + 191 rpm.**
- **internal passage for jet grouting: 106 mm**
- **clamp and joint breaker for rods max dia. 315 mm**

Cable pull-down by 10 ton winch with twin drum and adjustable speed from 0 to 20 m/min for drilling operations and 0-32 m/min for jet grouting injections.

Possibility to install rod feeder with double rotary and top hammer.

Mobile control board with delivery and pressure selectors and on/off electrical controls.

Side sliding cabin (upon request).



| Diesel Engine | | CUMMINS 6BTA 5.9 |
|----------------------------|---------|----------------------|
| Rated Power | kW (HP) | 132 (177) @ 2500 rpm |
| Crawler undercarriage | | |
| Length | mm | 4650 |
| Width | mm | 2500/3800 |
| Shoe width | mm | 600 |
| Travelling speed | km/h | 2 |
| Ground pressure | MPa | 0.079 |
| Max traction force | kN | 297 |
| Rotary head | | |
| Max nominal torque | daN.m | 2400 |
| Max speed | rpm | 191 |
| Mast | | |
| Feed stroke | mm | 18500 |
| Max feed force | kN | 100 |
| Max hoist pull | kN | 100 |
| Max speed (fast operation) | m/min | 20 |

Tutti i diritti tecnici sono da considerare indicativi.
La SOILMEC si riserva la facoltà di modificarli opportunamente.

All technical data are purely indicative and subject to change without notice.

- 1** Turret CUMMINS diesel engine and sound proofed canopy.
- 2** Winch units (22,900 lbs e 9,200 lbs)
- 3** Parallelogram system allowing radius adjustment always maintaining the mast in vertical position.
- 4** Self-erecting mast withstanding the full torque all over the length.
- 5** Cathead.
- 6** Cable pull down: 18,5 m stroke
- 7** Carousel (2 x 16 m rods)
- 8** Clamp and joint breaker for rods
- 9** Side sliding cabin
- 10** Undercarriage with expandable tracks from 2,5 m to 3,6 m

