



LÖDRIL



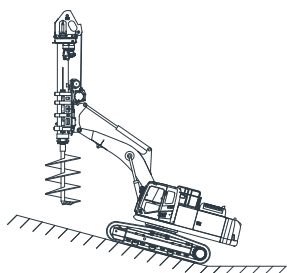
Foundation Drilling Equipment Manufacturing

## THE LōDRIL GETS YOU THE JOBS YOUR COMPETITORS CAN'T GET

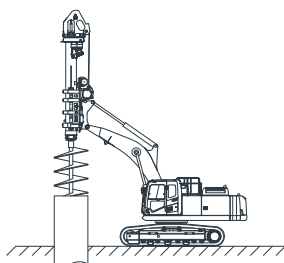
The LōDril® is a versatile, powerful excavator-mounted foundation drill for traditional and extreme jobs.

Its telescoping kelly bars allow you to drill to depths of 90 feet (27 meters) under severe overhead restrictions with a very low profile attachment—even in the most unfriendly conditions. We'll build your LōDril to the specific requirements of your job—but it'll take you far beyond that. We've built more than 600 LōDrils, and 99 percent of them are still in use today, including the first one! Whether you purchase a new excavator or mount it on an existing one in your fleet, your LōDril will be engineered for the base machine that makes the most sense for you. Look to LōDril for extreme projects like:

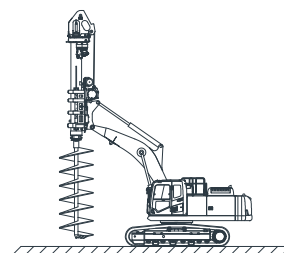
- + Inside buildings
  - + Large diameter holes
  - + On slopes
- + On uneven or rough terrain
  - + Over casing
  - + Over obstacles
- + Under bridges
  - + Under power lines



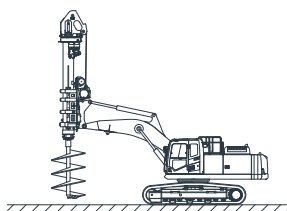
**ON SLOPE DRILLING**



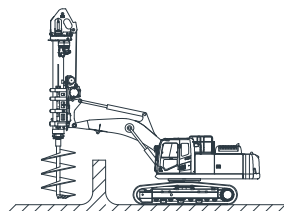
**DRILLING WITH CASING**



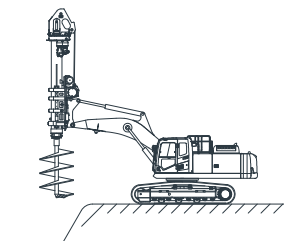
**LONG AUGER DRILLING**



**LOW OVERHEAD DRILLING**



**OVER OBSTACLE DRILLING**



**UNEVEN TERRAIN DRILLING**

**HYDRAULIC TORQUE  
UP TO 65,000 FT-  
LBS (95 KN-M) PLUS  
DRILLING DEPTHS  
OF UP TO 90 FEET  
(27 METERS)**

## FIND THE LÖDRIL RIG THAT'S RIGHT FOR YOU

LÖDRIL SPECS	Units	DH15	DH20	DH30	DH40	DH60
Rotary torque (max) <sup>1</sup>	ft-lbs	15,000	21,500	30,000	43,000	65,000
	kN-m	20	30	40	60	95
Kelly winch line pull (first layer, max)	lbs	8,000	12,000	18,000	25,000*	30,000*
	kN	35	53	80	110*	130*
Hole diameter <sup>2</sup>	in	36	48	60	84	108
	mm	900	1,200	1,500	2,100	2,700
Drill speed range (LHS) <sup>3</sup>	RPM	30/60/100	30/60/100	40/100/140*	30/60/100	30/60/100
Hole depth (max) <sup>4</sup>	ft	80	80	80	80	90
	m	24	24	24	24	27
Attachment height <sup>4</sup>	ft	9-21	10-21	16-26	14-26	17-32
	m	2.7-6.4	3.0-6.4	4.9-8.0	4.3-8.0	5.2-9.8
Excavator weight class x 1000 <sup>5</sup>	lbs	16-35	35-50	50-65	50-65	70-95
	kg	7-15	15-22	22-29	22-29	32-43

### LöDril upgrades

- + Kelly bar upgrades, with a choice of three grades of material
- + Kelly winch upgrade to a larger winch for maximum hoisting
- + Add a service winch to make tool changes quick and convenient
- + Round, self-locking kellys to increase crowd force in hard drilling conditions
- + Reaction jack in combination with round, self-locking kellys to handle tough rock
- + Power line detector that sounds when you're close to live overhead lines
- + Boom modification to maximize the size of the LöDril you can put on a smaller excavator
- + Telescoping boom to work out further beyond the tracks or increase crowd force and flexibility
- + Quick disconnect to easily remove the LöDril from the excavator

**Need more options? We'll custom engineer the right rig for you.**

\*With upgrade

<sup>1</sup>Running torque at low drill speed

<sup>2</sup>Dependent on ground conditions, tooling and operation

<sup>3</sup>Dependent on excavator

<sup>4</sup>LöDril configuration specific

<sup>5</sup>Excavator modifications may be required



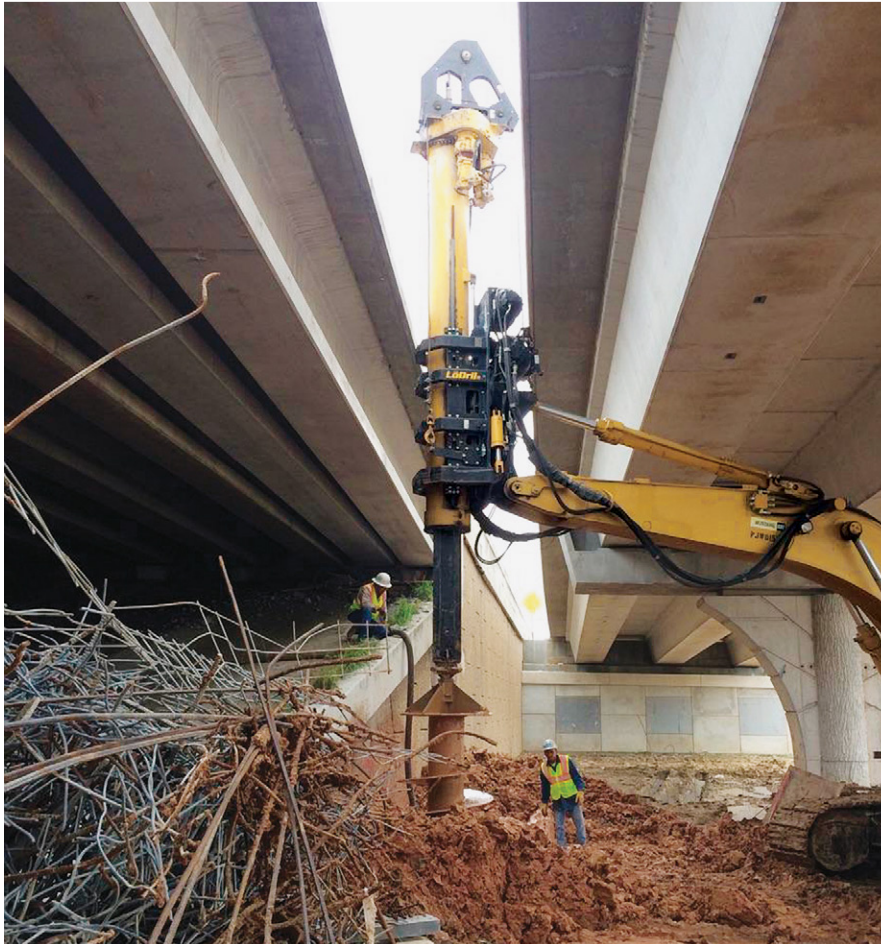


**“IF YOU WANT TO BE WOWED, THEN YOU NEED TO  
ADD A LÖDRIL TO YOUR FLEET.”**

Gene E. Sheedy, President, Midwest Drilling Foundations & Engineering, Inc.















**Give us a call**

Toll free (888) 569-3745

Local (208) 687-3311

Fax (208) 687-4153

New Zealand/Australia

+61 408 805 757

**24/7 service**

Toll free (888) 569-3745

Local (208) 687-3311

After hours (208) 446-4691

**Send us an email**

Sales: [sales@bayshoresystems.com](mailto:sales@bayshoresystems.com)

Customer service: [service@bayshoresystems.com](mailto:service@bayshoresystems.com)

**Stop by for a visit**

Bay Shore Systems, Inc.

14206 North Ohio Street

Rathdrum, ID 83858

[bayshoresystems.com](http://bayshoresystems.com)

**US Offices:** Houston, TX | Dallas, TX | Miami, FL | Atlanta, GA | Boston, MA | Rathdrum, ID (*headquarters*)

**International Office:** Sydney, Australia