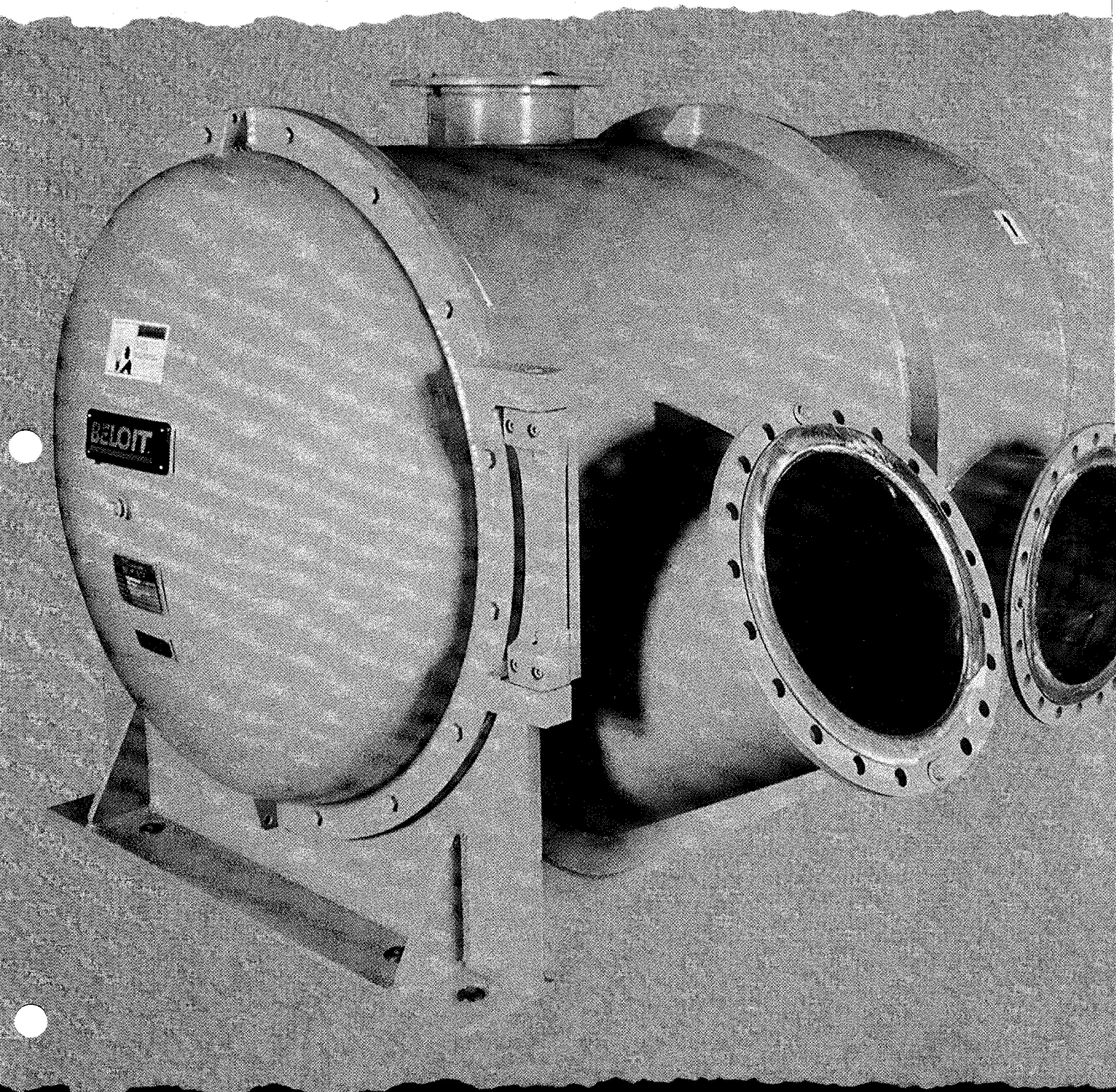


Beloit Fiber Systems BelPurge II™ Detrasher

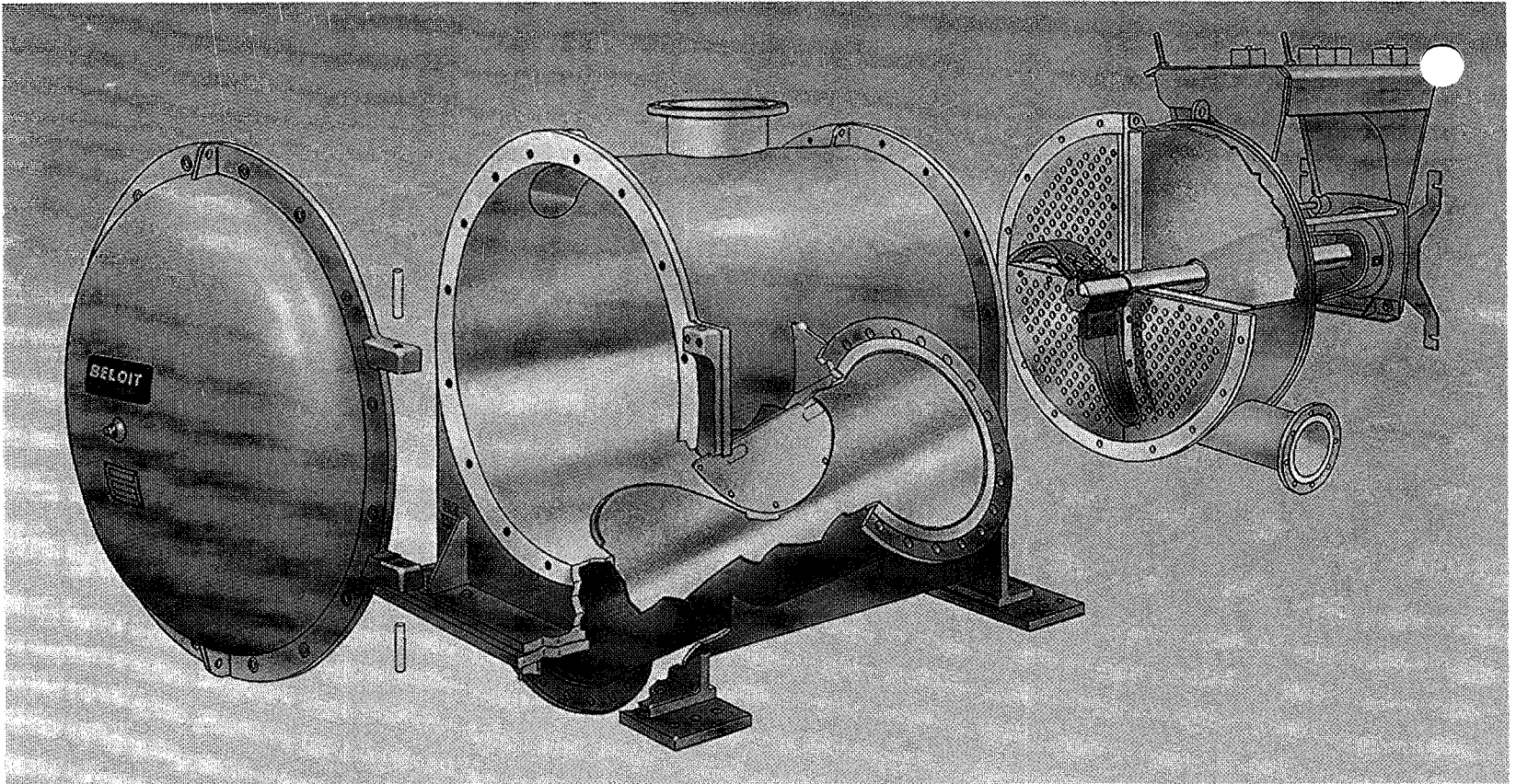
Separates contaminants from
usable fiber in batch and
continuous pulping.

BELOIT CORPORATION

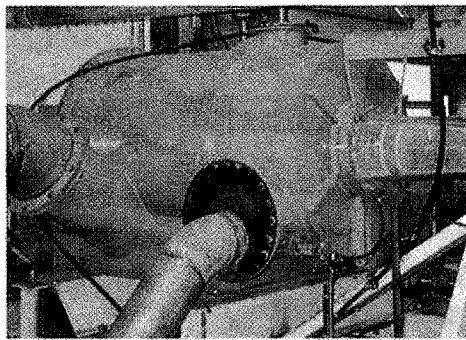


Innovation, not imitation™

BelPurge process design improves fiber recovery



The technologically advanced Beloit BelPurge II Detrasher efficiently separates usable fiber from both lightweight contaminants and heavy rejects in recycled fiber systems. The optional integral heavy-weight junk trap removes heavy contaminants — reducing wear while increasing pulper up time. The BelPurge II design also features a hinged front access door and segmented extraction grate for ease of maintenance, as well as a bolted extraction chamber that can be removed in one piece. And the BelPurge drive features an integral motor mount to reduce floor space requirements.



To find out how the BelPurge II Detrasher can add defibering capacity to your pulping system, call your Beloit representative today.

The BelPurge II Detrasher adds defibering capacity to your pulping system at minimal cost.

- Constructed of 304L or 316L stainless steel
- Strategically located lightweight reject connection bleeds rejects to a dewatering device for increased pulper up time
- Integral heavyweight junk trap quickly removes heavy contaminants, thereby reducing impeller wear
- Rotor blades fulfill low or high intensity defibering requirements
- Improved fiber recovery
- Hinged front access door for easy inspection
- Segmented extraction grate and removable extraction chamber for easy maintenance

BELOIT CORPORATION

BELOIT FIBER SYSTEMS DIVISION, 401 SOUTH STREET
DALTON, MASSACHUSETTS U.S.A. 01226 PHONE: 413/443-5621