



SPINEL 3G

MOBILE SURGICAL FLUOROSCOPIC
X-RAY SYSTEM

The Power of Passion

GEMSS

High Performance Surgical C-arm

The rapidly changing Surgical Imaging market demands increased functionality and improved clinical applications, and the SPINEL 3G high performance surgical C-arm delivers in every detail, from its highly-attractive, modern appearance to its advanced engineering.

Additional sub- handles and a minimized footprint; intuitive pictographic UI; superior image quality from the smallest detail to L-spine lateral projection AND lower dose, these are just a few of the advances of the SPINEL 3G.

◀ High resolution B/W 19" LCD Medical grade monitors

◀ High-dynamic CCD camera for high resolution.

◀ A larger 800mm(31.50 inch) free space and extended 135° [90° -45°] orbital rotation simplified positioning

◀ Highly compact design for improved mobility and powerful 12KW HF generator

◀ High performance Rotating Anode X-ray tube

Optimized Workflow

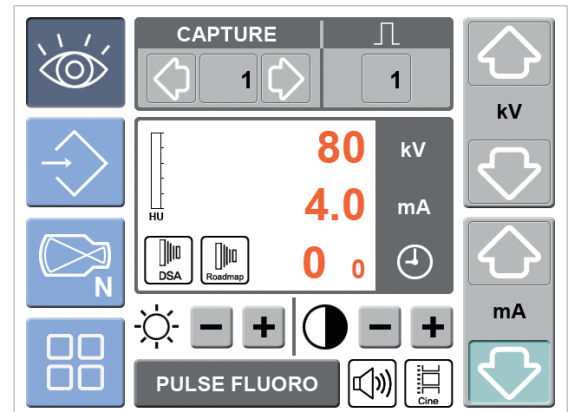
- Intuitive pictographic UI on Touch-screen OP panel
- Additional sub-handles for enhanced mobility
- Compact design provides more free space for operation
- Motorized up & down monitor cart for easier viewing
- Capable of long time and multi-frame recording
- Supporting multi-selection of frames / sec[1,2,4,8,15,25]

* Thermal printer

* indicates optional item



Simple touchscreen menu makes remote access to service quickly



Op UI

Specifications at a Glance



✓ 12kw, High Frequency Generator



✓ 1K x1K High Resolution CCD Camera



✓ 135° Wide Orbital Rotation With Large SID Distance



✓ Touch Screen C-arm Control



✓ High Performance Rotating Anode X-ray Tube



✓ Display Of AKR And Cumulative Air Kerma [mGy/min. and mGy]



✓ Lowering Dosage
-Virtual collimator
[In optimized workflow]
-Pulse mode



✓ High Resolution B/W 19" LCD Medical Grade Monitors
-1,000cd/m²



✓ Stability
-H.U.Display



✓ Convenience
-Single power input
-Sub-handles
-Automatic monitor up/down
-3rd monitor
-foot switch



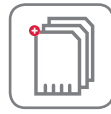
✓ Easy Archiving And Documentation
-DICOM 3.0
-CD/DVD Burner
-DICOM Paper print support
-USB Port

Smart CX-View



Database Management

- More convenient search & save capabilities
- Manage patient information
- Before & after surgery comparison



Unlimited Image Memory

- Unlimited patient capacity
- Unlimited study images



Versatile Diagnostic Tools

- Zoom, contrast, reverse, invert
- Filtering, edge enhancement
- Annotation



PACS Connectivity With DICOM 3.0

- Store and print, modality worklist management
- MPPS, storage commitment, and Import & export

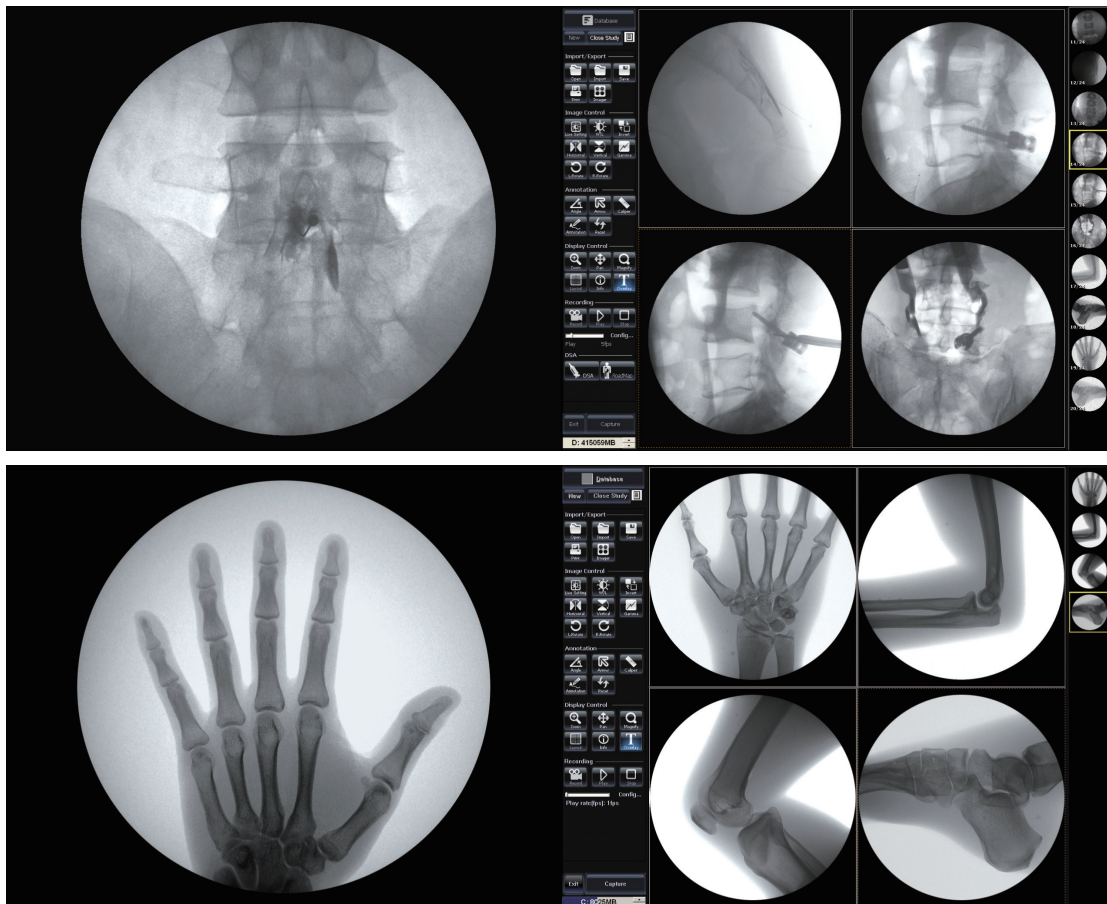
High-quality Imaging

Wide exposure range[0.2~10mA]

Improved penetration of dense anatomy with high mA (up to 20) in Boost mode

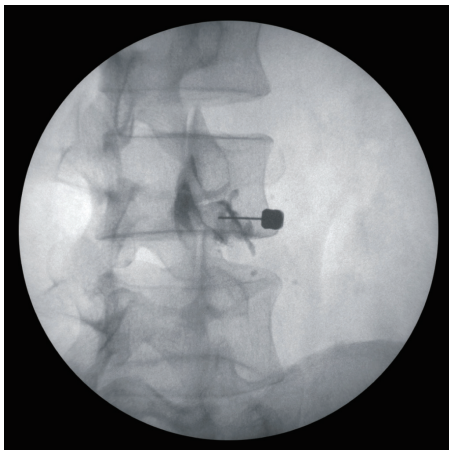
Pulse technology supports 30 FPS [frames / sec] for more precise operation

Smart ABC [Auto Brightness Control]



Applications

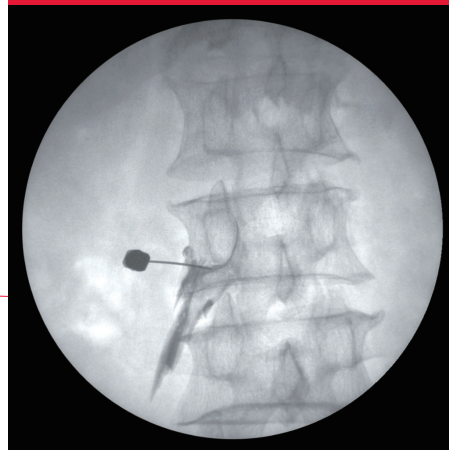
- General Surgery
- Orthopedic Surgery
- Neurology
- Urology
- Rehabilitation



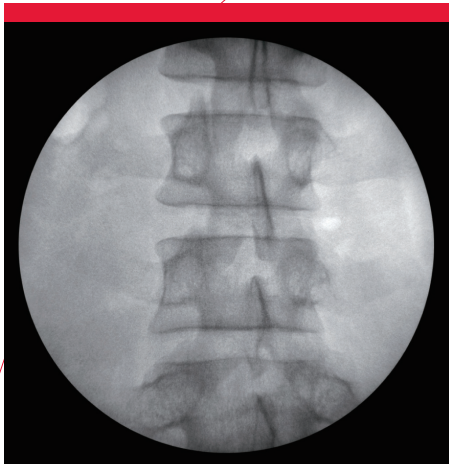
Pain Management



Pain Management



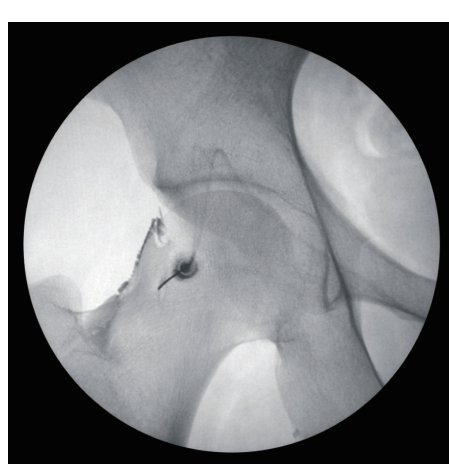
Spine



Spine



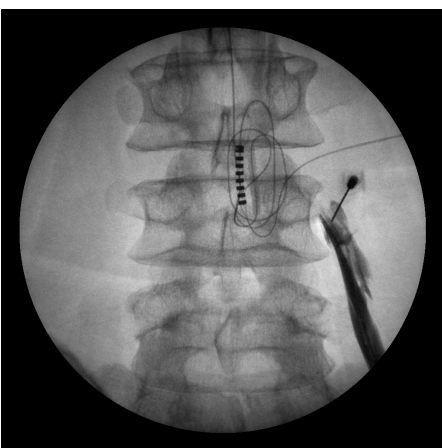
Orthopedics



Orthopedics



Thoracic Verte

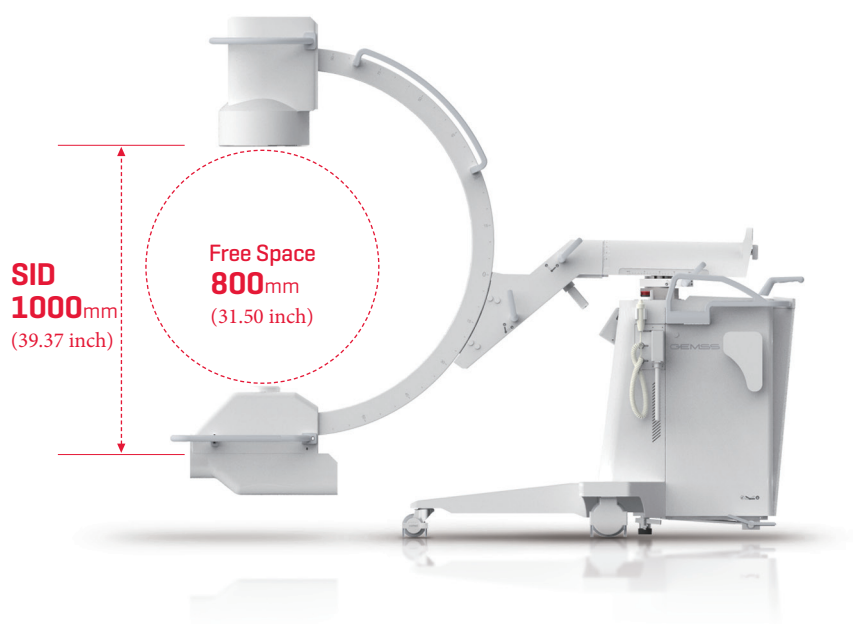
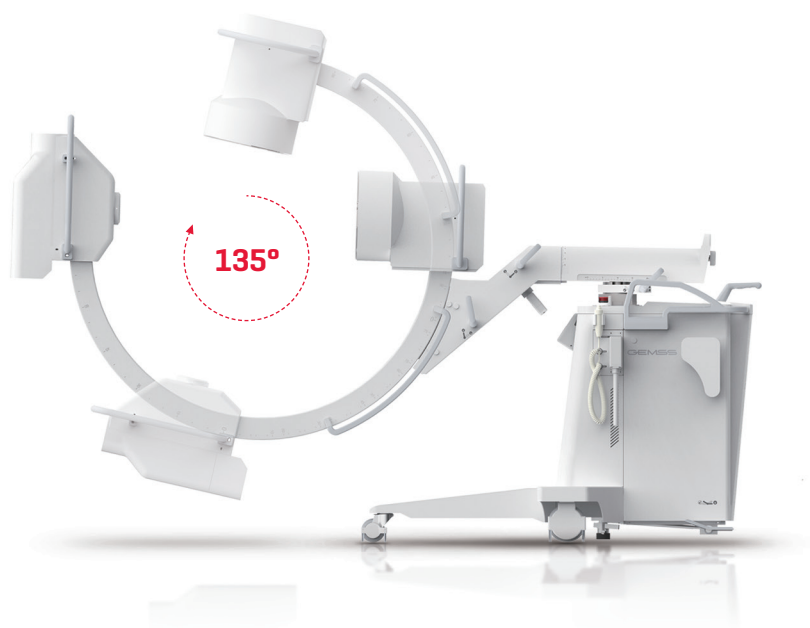


L-spine pain management



Cervical Block

Flexible Movement



GEMSS

GEMSS NORTHAMERICA INC.

www.gemss-northamerica.com

SPINEL3G-NA-1507

©GEMSS MEDICAL SYSTEMS reserves the right to make any changes in design and specifications contained herein without prior notice and will not be liable for any consequences resulting from the use of this publication. Any technical data contained in this document may vary within defined tolerances. Original images always lose a certain amount of data when reproduced. Please contact your local GEMSS sales representative for the most current information.