

Highest quality Specimen X-ray images.  
Integrated HD Optical Camera.  
Accurate specimen orientation.

# The XPERT® 40

## Specimen Radiography System

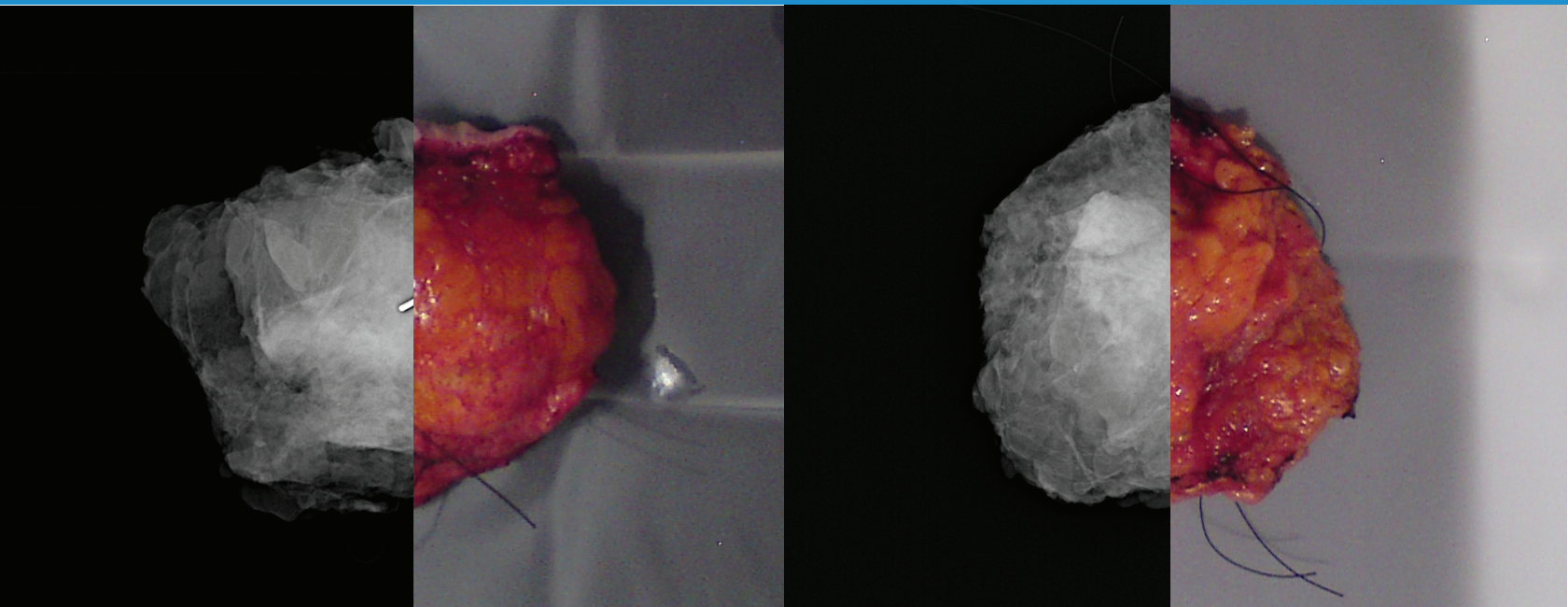
**Whether in the biopsy suite,**  
the pathology lab, or the OR  
**nothing beats the XPERT® 40**  
Specimen Radiography System  
**in terms of versatility and speed.**

### **XPERT® 40 System Capabilities:**

- Includes an integrated high resolution optical camera for correlation of gross anatomy with X-ray image.
- Provides unprecedented specimen visualization with digital mammography quality.
- Easy to use, with a touchscreen option and a full suite of annotation tools.
- Mobile design allows easy transport between departments.
- Uses most common specimen containers to reduce cost and preserve specimen integrity for pathology.
- Provides 2.3x magnification for increased visibility to detect the smallest abnormalities.
- Automatic Specimen Alert pro-actively alerts you if a specimen has not been removed from the chamber

# The XPERT® 40

## Specimen Radiography System



### Specifications

Detector Size	5" x 6" (12 cm x 15 cm)
Spatial Resolution	10 lp/mm, contact mode 15 lp/mm, 1.5x mag mode 20 lp/mm, 2x mag mode
Energy Range	10-50 kV
Tube Current	up to 1.0 mA
Window Filtration	0.005" beryllium
Focal Spot	50 µm, nominal
Power	90-250 VAC, 50/60 Hz, 500 VA
Wireless Connectivity	Standard
DICOM Interface	Annotate, Store, Print, and Modality Work List
Size (W x D x H)	23" x 23" x 50" (58 x 58 x 127 cm)
Weight	250 lbs. (136 kg)



**KUBTEC**  
MEDICAL IMAGING

WWW.KUBTEC.COM [f](#) [t](#) [in](#) [v](#)

Complies with U.S. FDA, Canadian and European requirements. Specifications subject to change without notice. Kubtec, the Kubtec logo, and XPERT are registered trademarks of KUB Technologies, Inc. M1243D-0918