



ORTHOscan

IMAGING EXCELLENCE



ORTHOscan MOBILE DI

Digital Diagnostic Imaging and Fluoroscopy

PORTABLE, LIGHT WEIGHT

Offers mobility between patient rooms and satellite offices

TABLET INTERFACE

Introduces tablet technology for input and display functions

OPTIMAL POSITIONING

Enables access to shoulders, weight-bearing knee/foot views

EXTREMITY IMAGING

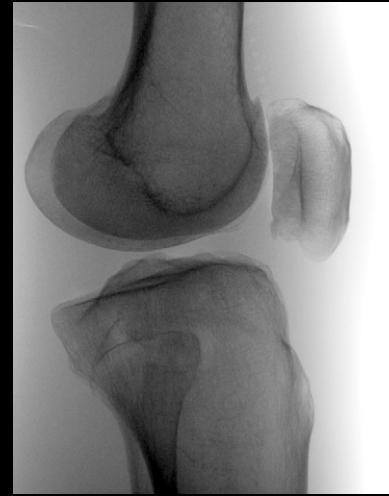
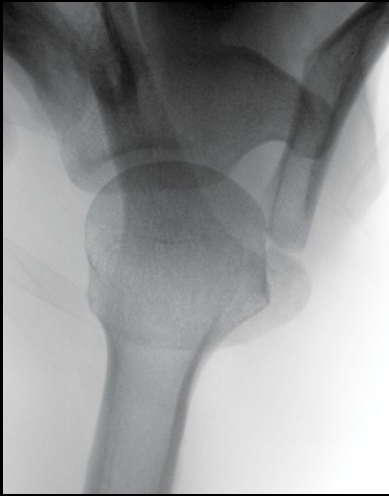
Adjustment free imaging for varying anatomy and motion

CONNECTIVITY

Wireless communication, DICOM, EMR, and USB capabilities

FLAT DETECTOR TECHNOLOGY

Exceptional image quality with improved dose efficiency



IMAGING

Temporary image hold: 512 images
 Snapshot capabilities
 Frame rate: 30fps
 Automatic adaptive noise suppression
 4 mode manual noise suppression
 Edge enhancement
 Laser alignment device
 Sterile field controls

DOCUMENTATION

DICOM 3.0 compliant
 Wireless communication
 USB 2.0 ports
 Image capacity: 8000
 EMR Image Link

FLAT DETECTOR

Detector resolution: 2k x 1.5k
 Nominal width: 6" (15cm)
 Useful array: 145mm x 115mm
 Pixel spacing: 75 microns
 DQE at 59.5 keV(IEC standard): 70%
 Field of view: 6" (15cm) x 5" (12cm)
 and 4.5" (11cm) x 4" (10cm)

X-RAY MONOBLOCK

Focal spot: 50 microns
 kV range: 40 - 78kVp
 mA range: 0.04 - 0.160mA

DISPLAY

20.1" non-surgical monitor
 or
 Non-diagnostic tablet

MOBILE DI DIMENSIONS

Weight: approx. 35lbs (15kg)
 Height: 25" (64cm)
 Width: 12" (30cm)
 Depth: 19" (48cm)
 Free Space: 13.8" (35cm)

ACCESSORY CART DIMENSIONS

Weight: approx. 96lbs (44kg)
 Height: 66" (168cm)
 Width: 24" (61cm)
 Depth: 39" (99cm)