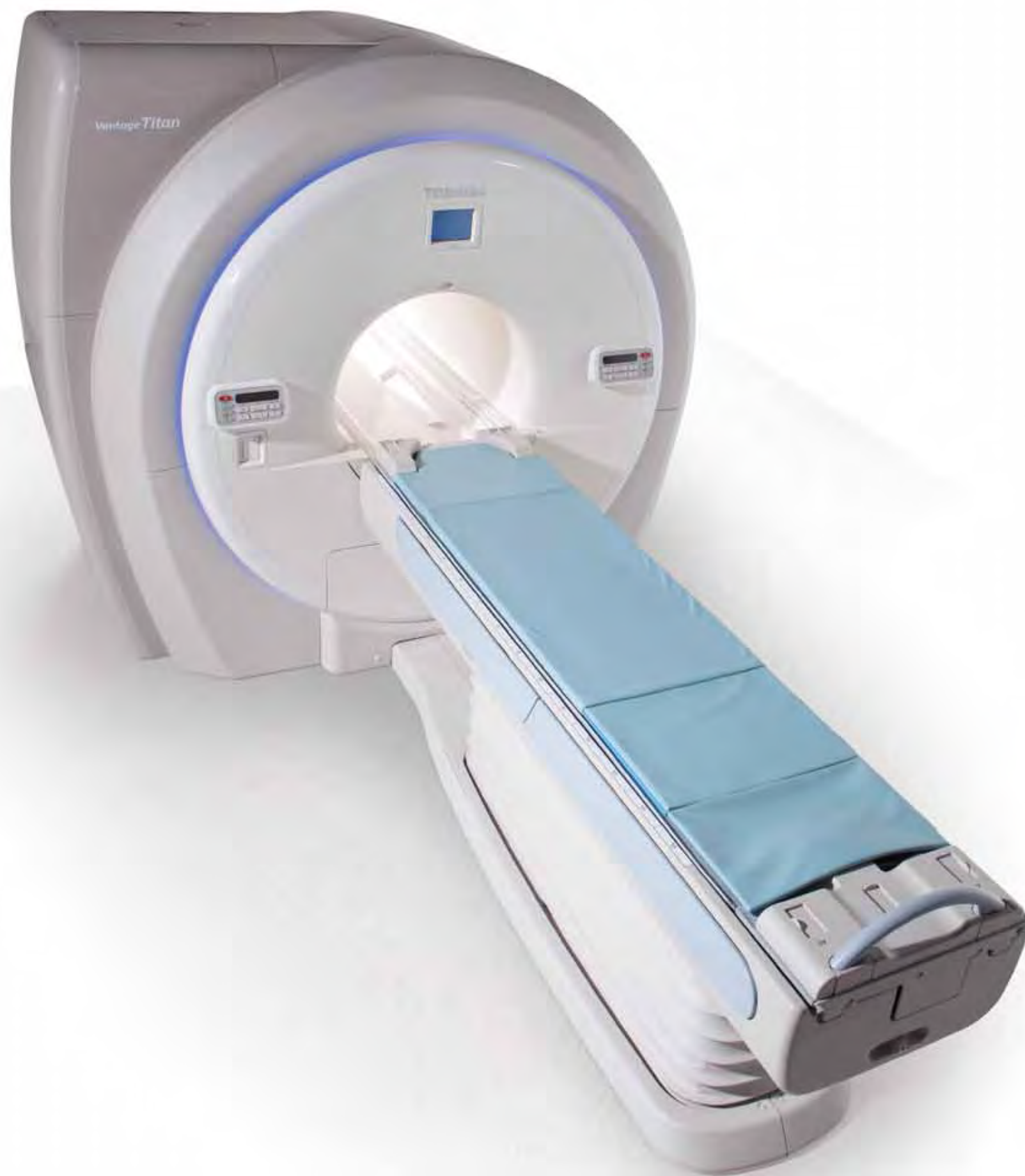


Vantage Titan™ 1.5T MR.
The Intelligent Choice.





Scalable. M-Powered. Performance.

Vantage Titan MR is designed to satisfy the demands of today's challenging clinical environment, addressing the requirements of patients, clinicians, technologists and administrators in a single, scalable and powerful MR platform. With a spacious, lighted gantry and the industry's quietest MR, patients are relaxed and ready for their exam. Technologists have greater clinical confidence as the most advanced MR technology on the market guides them through even the most complex exams. And administrators and clinicians alike see the value in the industry's leading high-resolution, non-contrast technology. These are just a few of the features you'll find in the Vantage Titan family of MR scanners from Toshiba.

Vantage Titan.

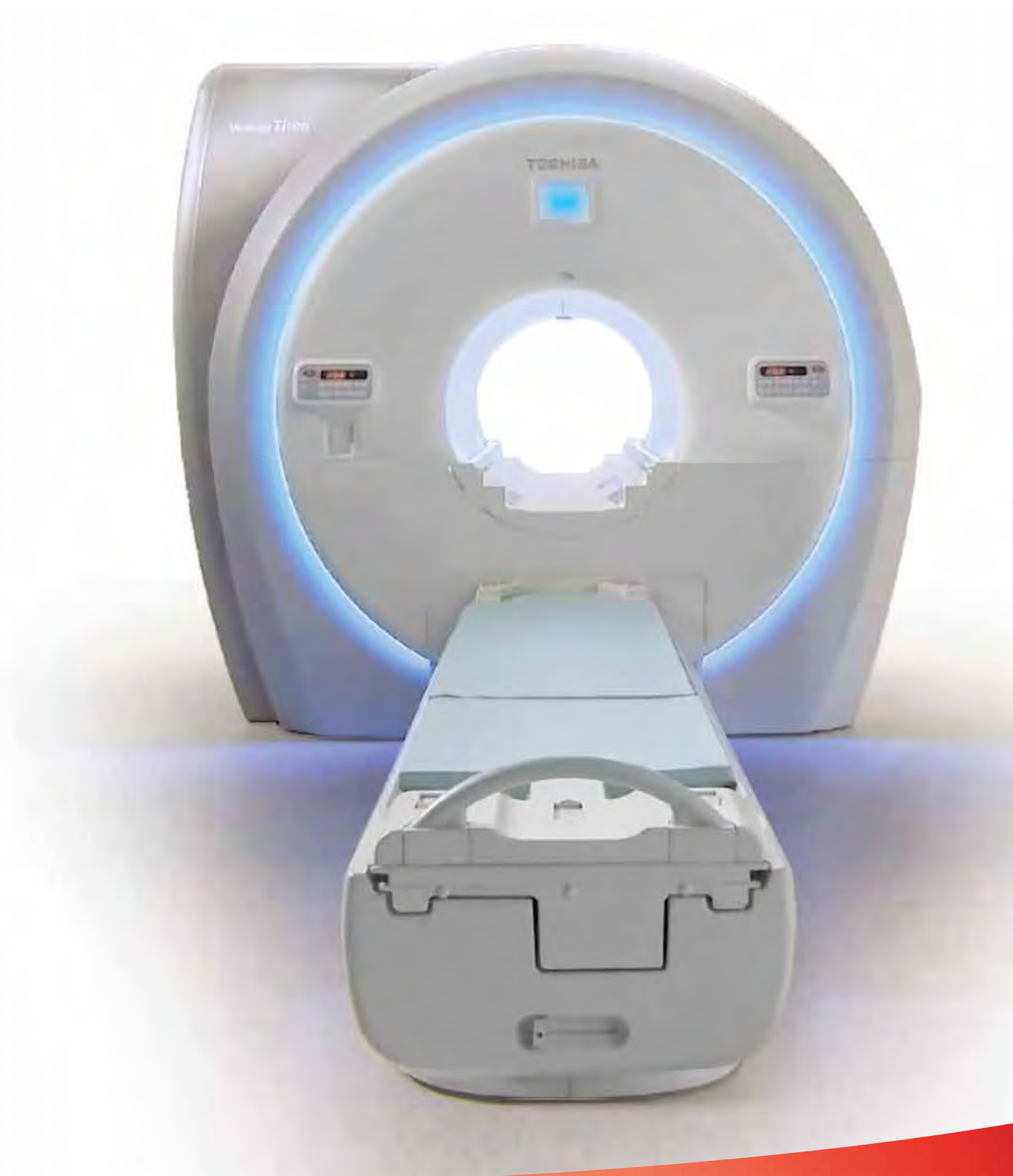
The Ultimate, Patient-Friendly MR.

Vantage Titan MR enhances comfort and compliance with a unique range of exclusive, patient-friendly features that create a safe and pleasant scanning environment, resulting in faster exams. Raising throughput and productivity, these features ensure patient satisfaction and help increase referrals from physicians.





- An inviting, softly lit gantry creates a calming atmosphere to help relieve patient anxiety
- The industry's widest aperture, ultra-short, open-bore design with the largest clinical field-of-view, accommodates larger patients, reduces claustrophobia and increases exam acceptance
- Exclusive, patented Pianissimo™ technology reduces acoustic noise by up to 90%, creating the quietest scanning environment available
- Complete scalability allows Vantage Titan to cover a wide variety of patients and procedures as your clinical needs grow



Scalability. It Just Makes Sense.

Vantage Titan is the only solution that lets you easily move to an advanced platform when you're ready. And because the magnet isn't changed – it's field-upgradable – there's minimum downtime for your facility. It's the best way to do more with less in today's healthcare environment. We think the best way to describe it is, well, intelligent.



Multiple Systems. One Solution.

The scalable Vantage Titan MR series consists of three configurations:

- Vantage Titan 8-channel with Octave SPEEDER™ coils
- Vantage Titan 16-channel with Atlas SPEEDER™ coils
- Vantage Titan 32-channel with Atlas SPEEDER™ coils

The 8-channel Vantage Titan MR solution can meet your need for higher performance today with the same comprehensive suite of applications available on both the 16- and 32-channel systems. With the ability to easily upgrade in the future, you can make the move to Vantage Titan MR with confidence, knowing you've made the right decision for today and tomorrow.



M-Powered. Fewer Steps to Greater Productivity.

It's always full speed ahead with Vantage Titan MR and Toshiba's proprietary M-Power interface with Pathfinder, CardioLine and NeuroLine – an extensive selection of streamlined, workflow-enhancing applications.



M-Power. As Easy as 1-2-3.

M-Power makes Toshiba’s sophisticated suite of MR software remarkably easy to learn and use, enabling technologists access to its full range of functionality. Starting the first scan with three quick steps reduces the patient’s anxiety while they wait for the exam to begin. M-Power allows you to accommodate a higher patient volume while offering a wider range of clinical applications.

Designed by technologists for technologists, M-Power provides easy access to Vantage Titan MR’s full range of functionality and streamlines throughput by allowing complete scanning and post-processing in three easy steps.



Advanced Post-Processing

Advanced post-processing applications have been developed with a streamlined workflow for operators. fMRI, Spectroscopy, Diffusion Tensor Imaging and Diffusion Tensor Tractography applications can be accessed on the main console using the following simple, three-step process. These optional applications can be added as your clinical practice grows.



M-Power automates workflow to get you from imaging to post-processing quickly, easily and accurately.

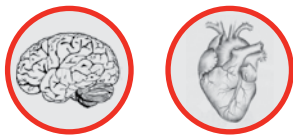
Pathfinder

Pathfinder automatically and efficiently guides technologists through pre-configured scan parameters and processing, which optimizes outcomes by eliminating unnecessary steps.

- Selects anatomical region and protocol and starts scan
- Aligns anatomic feature, performs in-line advanced processing and transfers data to PACS and other DICOM workstations

CardioLine and NeuroLine

CardioLine and NeuroLine software increases overall departmental efficiency by giving operators access to a series of automated scan protocols that standardize acquisition and review of routine exams with a single mouse click. Complex cardiac exams even become routine with built-in intelligence from CardioLine and NeuroLine.



Performance. Essential to Department Productivity.

Vantage Titan MR provides dynamic RF solutions tailored to your facility, which make it easy to satisfy your scanning needs today and protect your investment in technology for tomorrow.



A Robust Range of Advanced Features.

Vantage Titan MR configurations share enhanced features that distinguish them from other systems.

- Four generations of non-contrast techniques increase patient safety by capturing the highest quality MR angiography images, eliminating the need for laboratory tests and leading to fewer interruptions of patient schedules due to complications
- Reduced power consumption
- M-Power software platform
- Integrated coil technology that adjusts automatically to system configuration and exam being performed

MR in a Class All its Own.

Featuring advancements in every aspect of its design and construction, Vantage Titan MR boasts a wide array of industry leading achievements.

- First scalable, wide-bore solution that satisfies the wide range of facility requirements
- First wide-bore MR system featuring fully integrated coils and the largest clinical field-of-view
- First MR scanner with an active hardware solution for acoustic noise reduction
- Most extensive selection of non-contrast MRA techniques available



Right-Sized for Facilities and the Environment.



Not only does Vantage Titan MR lower the price of ownership and streamline workflow to increase productivity, it also decreases operating costs with new, eco-friendly features that reduce power consumption by nearly 15,000 kWh per unit, per year.*



**In typical clinical practice.*

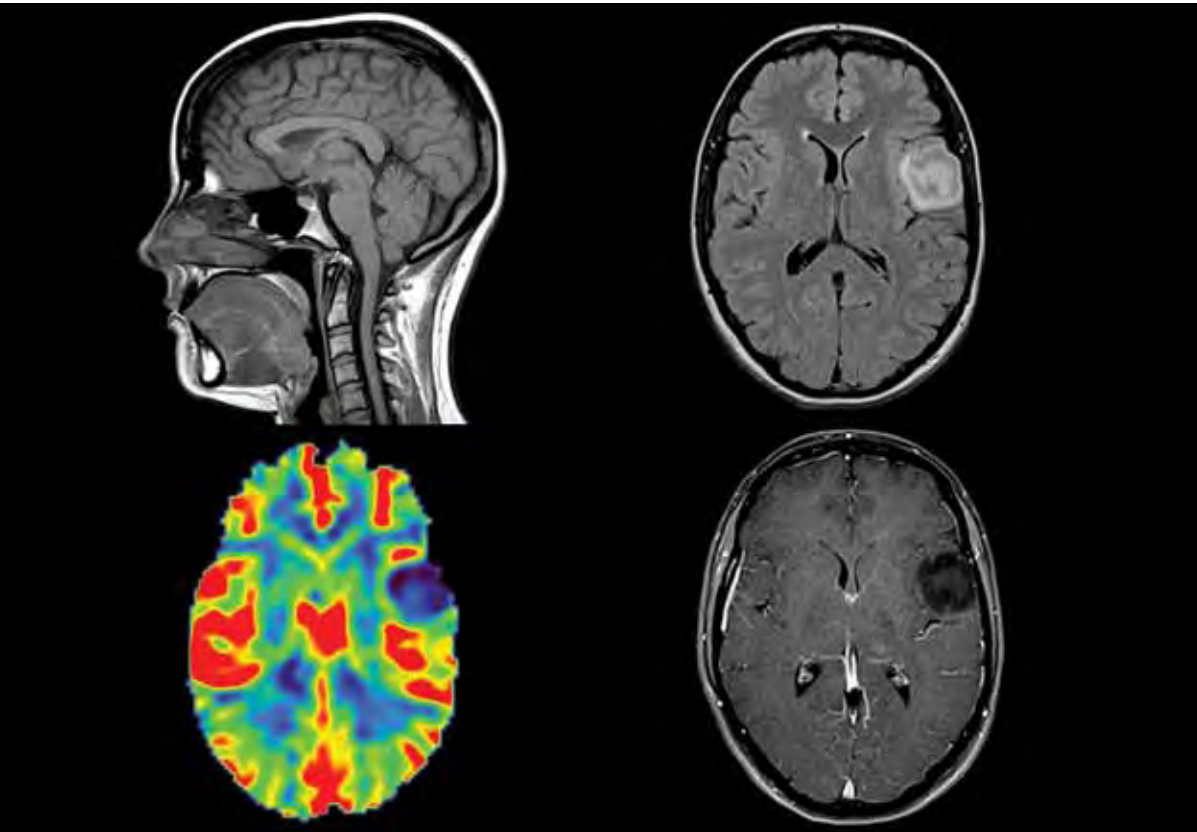
Unequaled Training & Education.

At Toshiba's Institute for Advanced Imaging, we believe the best medical imaging products should be operated by the most knowledgeable professionals, and it's for that reason that we offer our customers in-depth training and education at our state-of-the-art facilities located in Southern California. You can purchase education events with your system and customize education and training programs designed to achieve staff proficiency, starting the moment your equipment goes live.

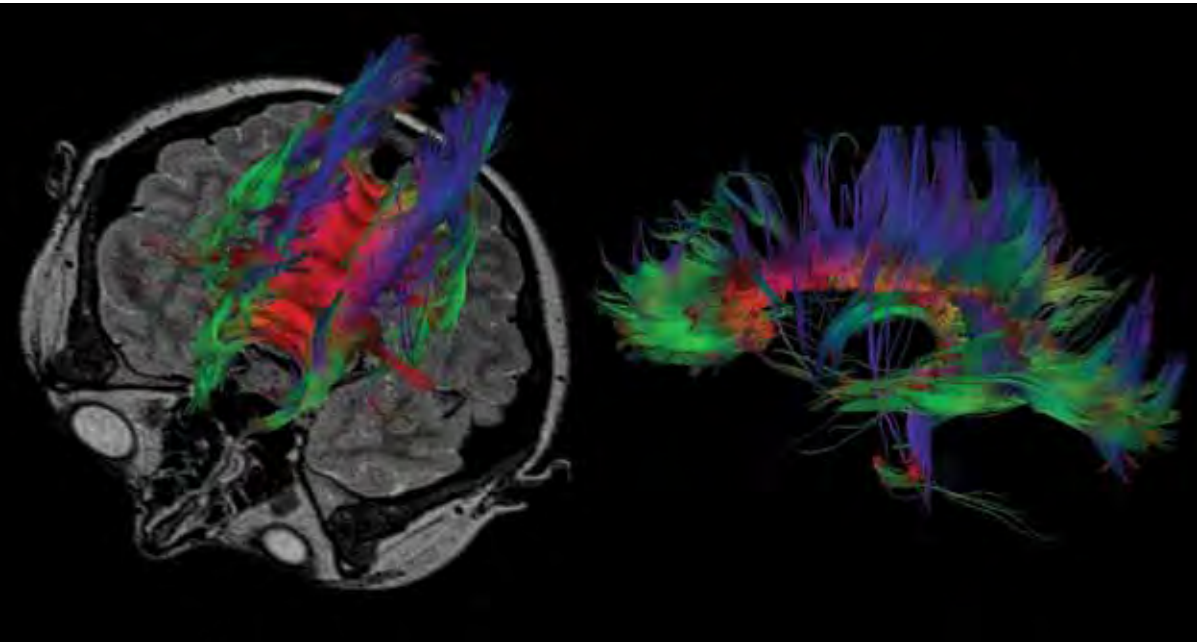
- A global network of facilities provide training that meets stringent guidelines for clinical competence to help ensure consistent results and more rapid diagnoses
- The Toshiba Institute of Advanced Imaging located in Irvine, CA, offers classroom instruction coupled with hands-on experience
- The newly opened MR Research Center provides unparalleled customer access to the latest products and technology
- On-site training and follow-up visits by Toshiba training professionals help facilities maintain and add new competencies
- Accessible 24/7, an extensive library of Continuing Education and CME-accredited courses are conveniently available on-line



Image Gallery



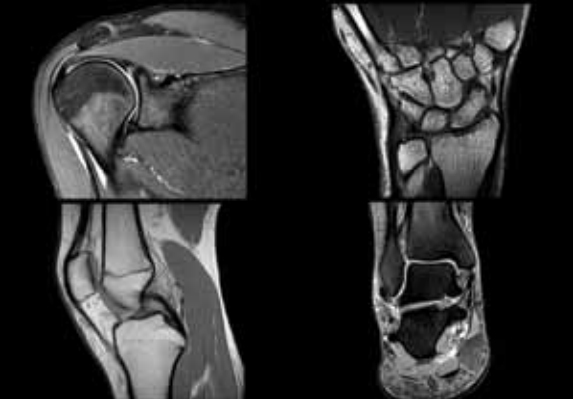
High-resolution brain images acquired with integrated coil technology and advanced post-processing using M-Power.



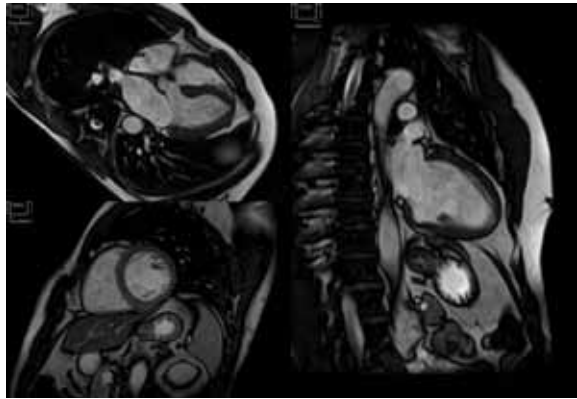
Advanced Diffusion Tensor Tractography post-processing using M-Power.



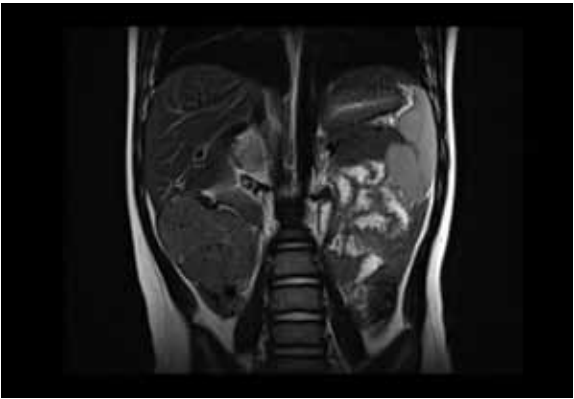
Advanced non-contrast MR angiography images depicting complex vasculature.



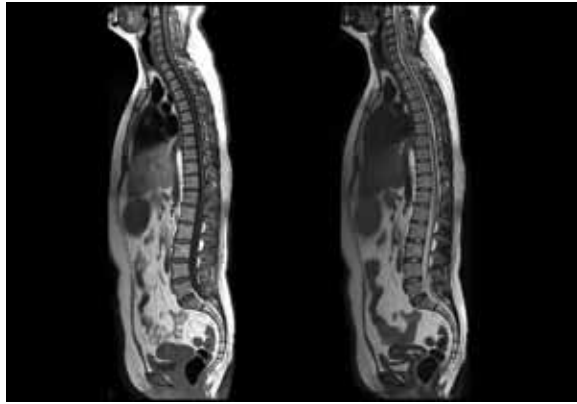
Flexible coil configurations allow for off-center, fat saturation and high-resolution orthopedic imaging.



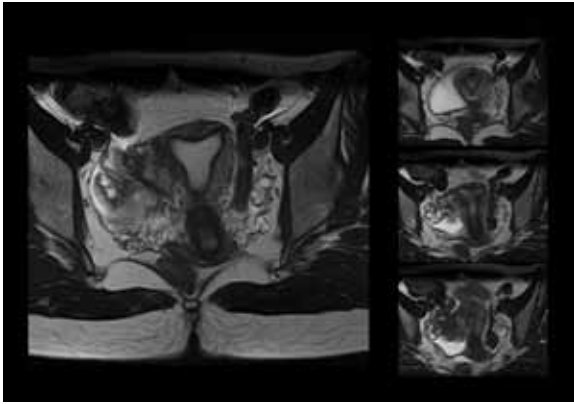
Superior homogeneity provides the optimal environment for SSFP cine cardiac imaging.



Abdominal image of a 3-year-old pediatric patient obtained using a 16-element flexible coil showing an abdominal mass.



Sagittal T1 and T2 whole spine imaging using Octave integrated spine coil.



High-resolution female pelvis utilizing Octave SPEEDER and 16-channel flex coil.

LEADING INNOVATION

For more than 130 years, Toshiba has been a world leader in developing technology to improve the quality of life. Some 50,000 global patents demonstrate that rich history of leading innovation. It might surprise you to learn some of the things we've invented.

1915 First X-ray tube	1995 First real-time CT fluoro	2007 First dynamic volume CT scanner
1970 First color video phone	1995 First DVD	2010 First 3D TV (without glasses)
1973 First real-time ultrasound system	1996 First quiet MRI	2011 First 3D ultrasound volume rendering
1985 First slip-ring CT scanner	1999 First 0.5 mm multidetector CT	
1985 First laptop computer	2004 First 64 row multidetector CT	

AWARD-WINNING SERVICE AND SUPPORT

Developed with customer input, Toshiba's innovative support programs have resulted in greater satisfaction when using our MR systems as reflected in customer surveys time after time.

InTouch Center™

A centralized service facility that provides applications and service support expertise for Vantage Titan customers 24 hours a day, seven days a week.

InnerVision® Plus

Monitored around the clock, remote system diagnostics help identify problems and provide potential solutions before care is interrupted or an engineer can arrive.

InTouch Agreements

Tailored to meet specific customer requirements, these range from an a la carte approach that helps manage risk to full security agreements that provide complete system protection.

Technical Assistance

Customer support specialists are available 24/7 to identify and resolve technical issues in real time. Application specialists are also available to assist staff with protocol and image quality issues.

Local Customer Teams

A single call mobilizes a local team of Toshiba Customer Engineers. Averaging 10 years of experience with Toshiba and 105 hours of specialized training per year, they can quickly resolve almost any performance issue.

Parts Support

A complete inventory of Vantage Titan product parts is ready for shipment when and where they're needed, any time day or night.



TOSHIBA AMERICA MEDICAL SYSTEMS, INC.

2441 Michelle Drive, Tustin CA 92780 / 800.421.1968

©Toshiba Medical Systems Corporation 2012. All rights reserved.
 Made for Life, Pianissimo Atlas SPEEDER, Octave SPEEDER and Vantage Titan are trademarks of Toshiba Medical Systems Corporation.
 InTouch Center is a trademark of Toshiba America Information Systems.
 InnerVision is a registered trademark of Toshiba America Medical Systems, Inc.
 Design and specifications are subject to change without notice.



MCAMR0065EB