

## INTRODUCING

# STREAMLINE

X-Ray imaging tables from Surgical Tables Inc.

### DESIGN

This table line is designed for high patient throughput for surgery centers, pain management, and other multidisciplinary medical facilities.

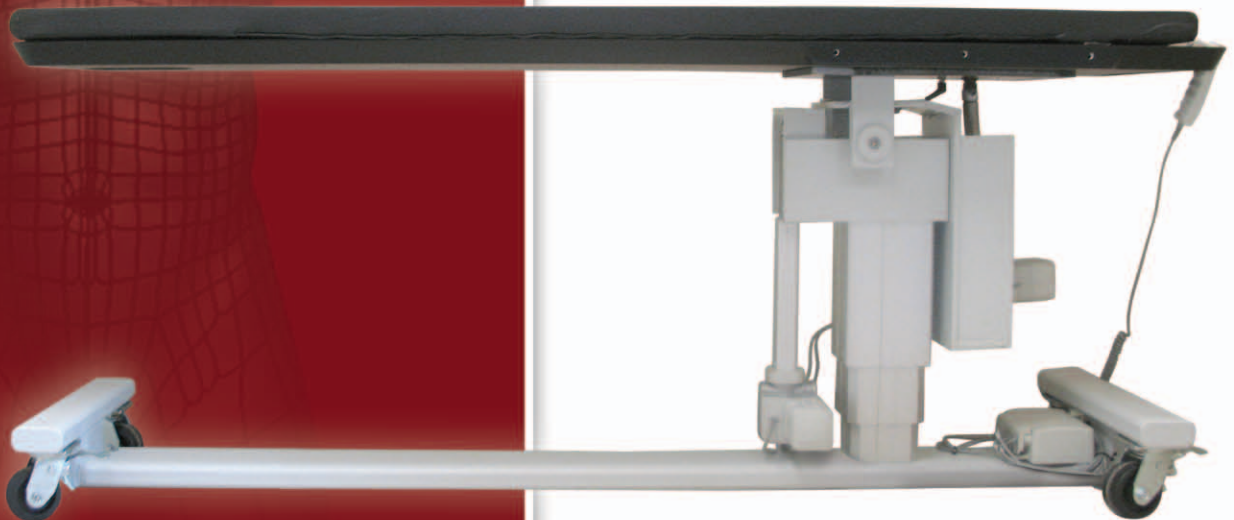
### VALUE

The Streamline series is the lowest priced table in the imaging table industry. This line along with the best selling Max series and EconoMax series tables, makes STI the company with the most table options to choose from in the medical table business.



***Carbon fiber diving board style imaging table***

*"absolutely the best price and value in the table industry"*

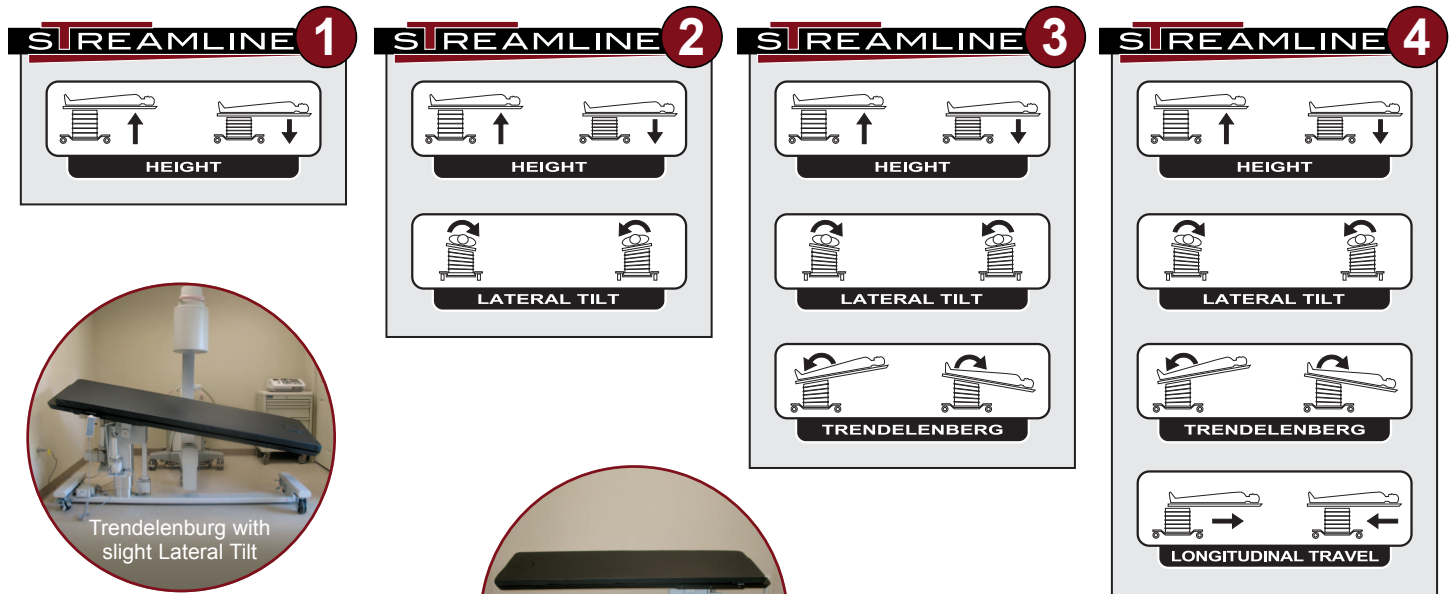


### FEATURES

- Diving board style for easy c-arm access
- Large patient capacity – 500 pound load
- 2" patient high quality comfort pad
- Facial Cut-out for prone procedures
- Light weight - easy to physically move the table
- 24" top eliminates need for arm boards
- Simple to use top quality wheel locks
- Easy patient transfer to table



Integrity Medical Systems, Inc.  
13831 Jetport Commerce Pkwy  
Fort Myers, FL 33913  
239.454.9555/800.722.3646  
[www.integritymed.com](http://www.integritymed.com)



Carbon fiber top of 24" width eliminates need for armboards and 84" length can accommodate even the tallest patients

Facial Access Hole

2" thick high quality patient comfort pad

Easy to use handswitch with power on indicator

High end actuator motor can lift over 500 pound load

Diving board style easy c-arm access

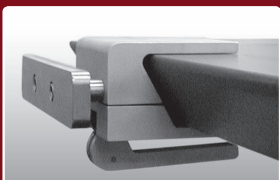


Lightweight which makes it easy for staff to move the table around the room or room to room



## OPTIONS ▼

### MODULAR SIDE RAIL SYSTEM



### SURGICAL ARMBOARDS (Removeable armboard rotates 180 degrees)



### PROCEDURAL ARMBOARDS (Each armboard rotates 180 degrees)



### CERVICAL IMAGING PLATFORM



### FOOT CONTROLS

