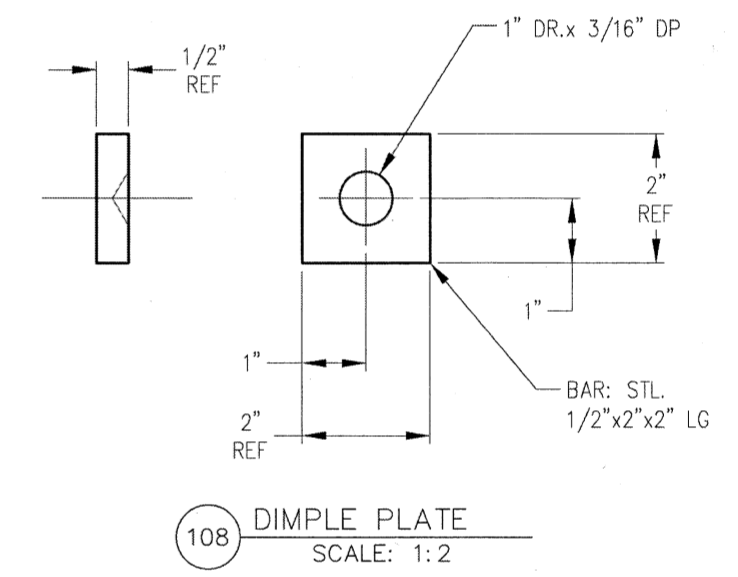
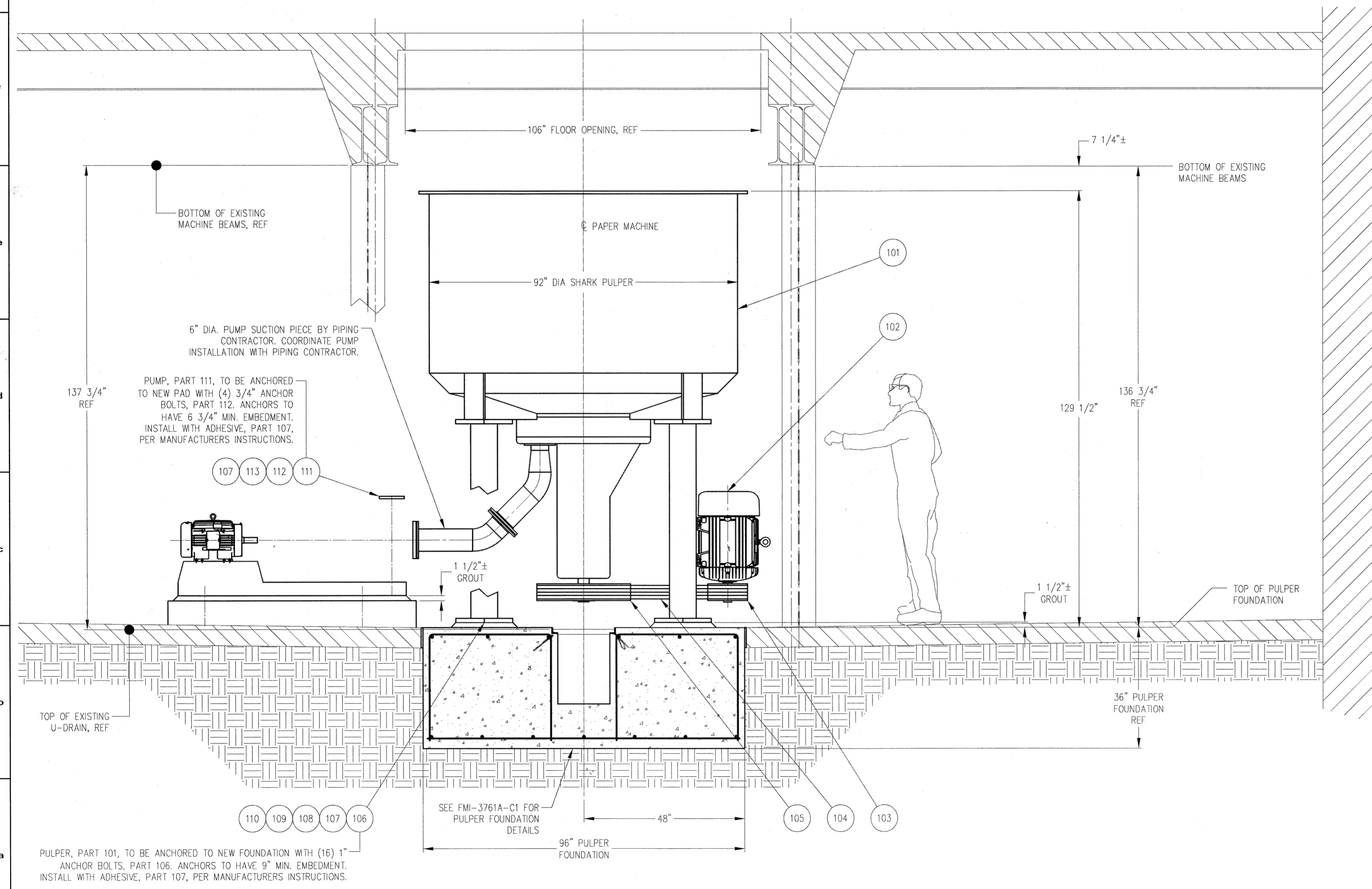



PARTS LIST				
PART	QTY	MATL	DESCRIPTION	REMARKS
101	1	FAB	BELOIT SHARK PULPER	FMI-3761A-D4
102	1	---	75 HP, 1750 RPM, 575V, TEFC MOTOR	BY OWNER
103	1	---	DRIVE PULLEY- 5V, 5 GROOVE, 11.70 P.D.	BY OWNER
104	5	---	BELTS- ULTRA-V COB VX #5VX1500	BY OWNER
105	1	---	DRIVEN PULLEY- 5V, 5 GROOVE, 27.90 P.D.	BY OWNER
106	16	S/S	THREADED ROD, 1"-8 x 14" LG.	BY CONTRACTOR
107	A/R	---	HILTI HIT-HY 200 2-PART ADHESIVE	BY CONTRACTOR
108	16	S/S	HEX NUT, 1"-8	BY CONTRACTOR
109	4	STL	DIMPLE PLATE (SEE DETAIL)	BY CONTRACTOR
110	4	STL	SQ HD SET SCR: 3/4-10x4" LG	BY CONTRACTOR
111	1	---	GOULDS 3175 3x6-12 PUMP W/ 20 HP MTR.	BY OWNER
112	4	S/S	THREADED ROD, 3/4"-10 x 12" LG.	BY CONTRACTOR
113	4	S/S	HEX NUT, 3/4"-10	BY CONTRACTOR



"PRELIMINARY"
NOT TO BE USED FOR CONSTRUCTION

WET END PULPER INSTALLATION - ELEVATION (LOOKING TOWARDS WET END)

REV	DESCRIPTION	BY	DATE	CHK'D	APP'D
 FiberMark NATURALLY CREATIVE™					
architecture • engineering • management 166 east street, pittsfield, ma 01201 (413) 443-2374 fax (413) 443-6057 team@edm-ae.com					
DATE: 10-30-14	SCALE: 3/4"=1'-0"	DSGN: KPG	DRWN: KPG	CHK'D:	APP'D:
PROJECT: FITCHBURG PAPER MACHINE UPGRADES					
TITLE: WET END PULPER INSTALLATION ASSEMBLY - ELEVATION				DRAWING No: FMI-3761A-A1	REV: SHT. 1 of 2