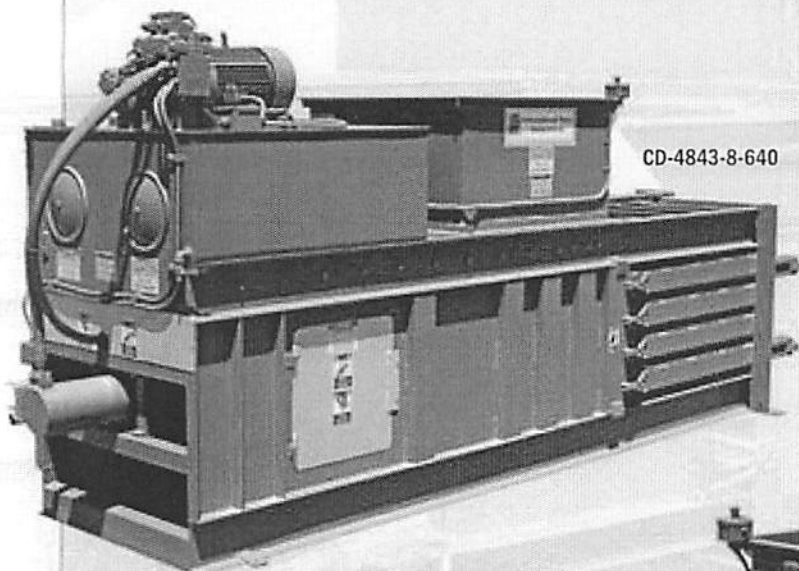


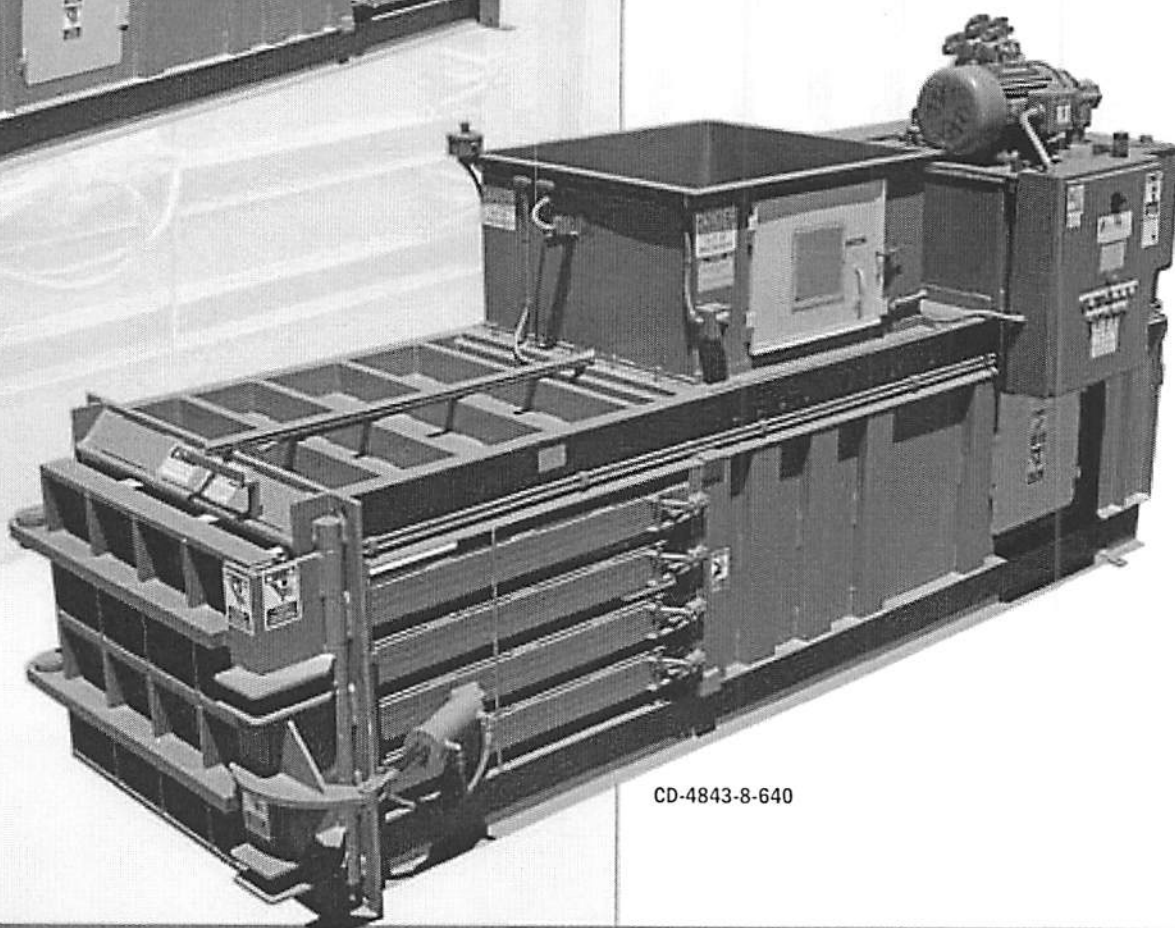
CD Series

Closed Door Balers

IBC has been a leader in the closed door baler market for over 50 years. We offer the widest range of chamber sizes and feed openings to accommodate most applications. IBC closed door units can handle a wide range of products, and can be application-engineered toward your specific product.



CD-4843-8-640

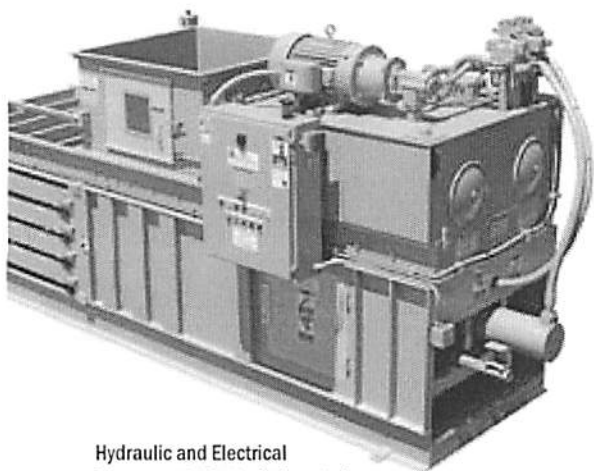


CD-4843-8-640



INTERNATIONAL BALER CORPORATION

Features:



Hydraulic and Electrical
Components Centrally Located

CD Series

- Heavy duty welded construction
- Heavy duty hydraulic system with TEFC motor
- Integrated disconnect providing for lock-out/tag-out procedures
- Adjustable striker
- Spring-loaded retractable bale retainer dogs
- Automatic Cycling
- Multi-material capabilities
- PLC equipped electrical panel UL Listed
- Easy bale tie-off
- Adjustable photo cell control
- Meets or exceeds all current ANSI X 245.5 safety standards
- Safety release "Hydraulic Operated Clam-shell" door lock
- Easy to operate controls

Closed Door Series Specs

MODEL	CD - 30X30	CD - 30X36	CD - 30X43	CD - 43X43	CD - 48X43
Cylinder	4	6 / 7	7 / 8 / 9 / 10	8 / 9 / 10	8 / 9 / 10
HP	10	20 / 30	30 / 40 / 50	40 / 50	40 / 50
Force	37,699	84,823 / 115,453	115,453 / 150,800 / 190,852 / 235,620	150,800 / 190,852 / 235,620	150,800 / 190,852 / 235,620
PSI	43	79 / 107	89 / 117 / 148 / 183	62 / 82 / 103 / 127	73 / 92 / 114
Cycle Time	16	From 10 - 18 Seconds			
Feed Opening	30 x 28	50 x 28	50 x 28	50 x 41	50 x 46
Bale Size	30 x 30 x 42	30 x 36 x 60/72	30 x 43 x 60/72	43 x 43 x 60/72	48 x 43 x 60/72

*Standard 3000 PSI *Regen Optional

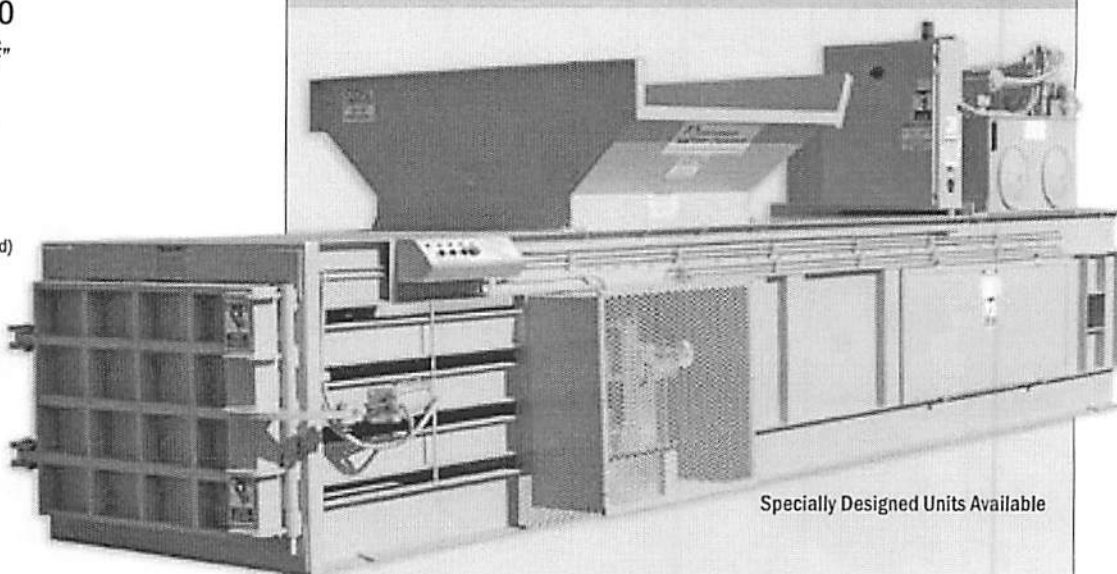
CD 3036 - 6 - 7 30 - 30

"A" "B" "C" "D" "E" "F"

A=Series = CD
B=Baler Cross Section = 3036
C=Cylinder = 6
D=Bale Length = 72
E=Horse Power = 30
F=Optional Feed Opening = 30 x 28
(If no number= Feed Opening Standard)

CD Feed Opening Options

3036: 30 x 30 x 28
3043: 30 x 30 x 28
4343: 60 x 60 x 41
4843: 60 x 60 x 46



Specially Designed Units Available

INTERNATIONAL BALER CORPORATION

5400 Rio Grande Avenue, Jacksonville, Florida 32254
P.O. Box 6922, Jacksonville, Florida 32236
(904) 358-3812 * (800) 231-9286 * Fax (904) 358-7013



As part of our continuing product improvement and quality assurance programs, specifications are subject to change without notice and without incurring responsibility to units previously sold.

VISIT US ON THE WEB: www.intl-baler.com
Or email us at: sales@intl-baler.com