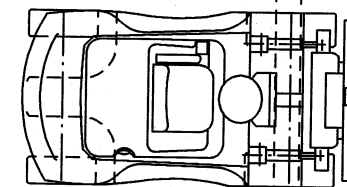


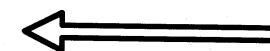
SECTION A-A

scale 1:75

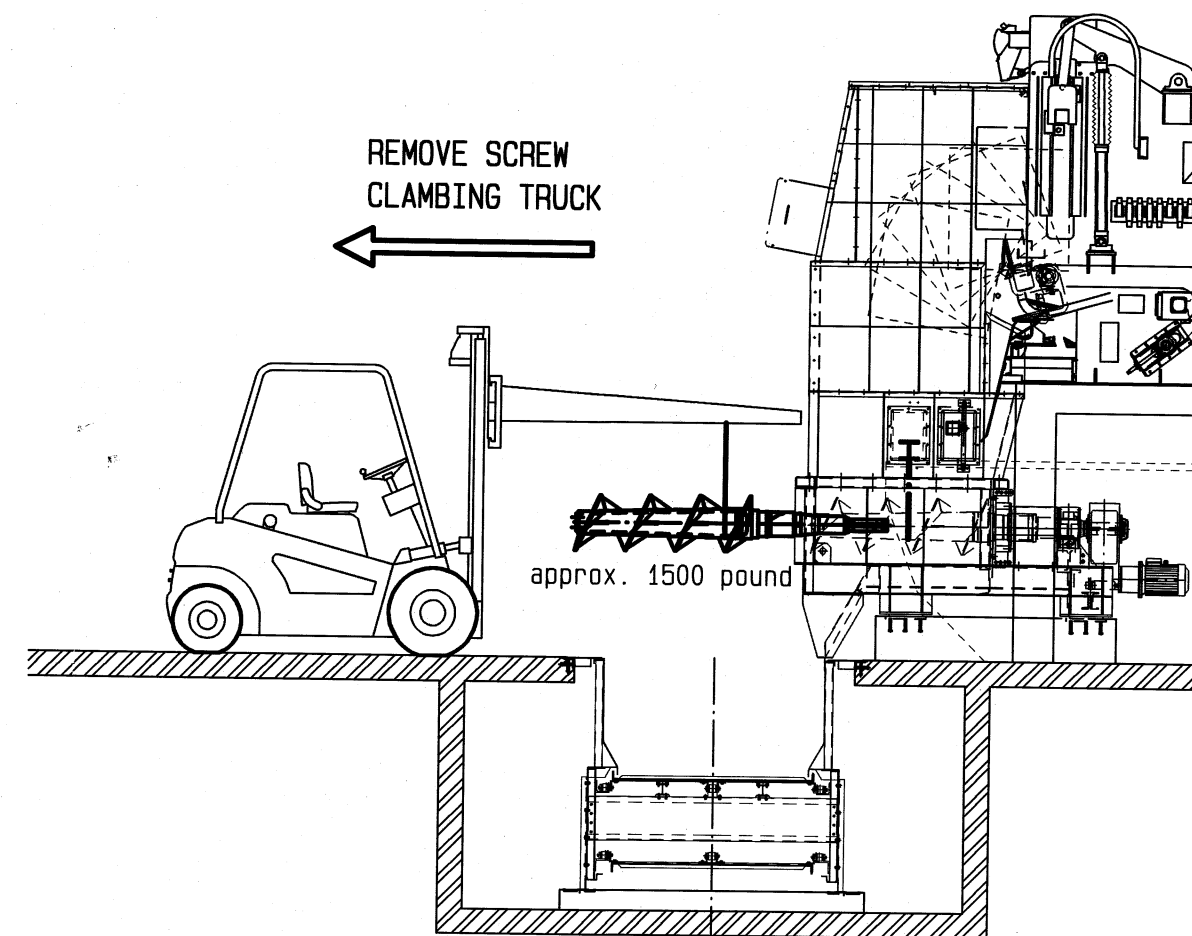
REMOVE WITH
CLAMMING TRUCK



REMOVE SCREW
CLAMMING TRUCK



approx. 1500 pound



PROJECT INFORMATION

ABGS Project No. AFCP-001
Alliance Forest Products US Corp.
Coosa Pines, ALABAMA
PO No.: 445007

Recycled Fiber Plant Project

REMOVING SCREW SHAFTS:

- 1) remove gear reducers
- 2) unbend fastening of plummer block and flange bearing
- 3) support screw shaft on rail beam or on balebreaker casing box
- 4) remove plummer block and flange bearing
- 5) remove screw shaft with high lift truck

scale

1:75

DETAIL REMOVING
BALE BREAKER SCREW

drawg. no.:

zkma_demontageD

AFP US DWG-No.:
CR-93-M-0041

This drawing is protected by copyright

and placed at the disposal of the recipient for personal use only.
It must not be copied or duplicated by any means whatever or brought
to the attention of, forwarded or made available to third parties,
particularly competitors, without our prior written consent.
Copyright violations on the part of the recipient or third parties are
punishable offences under civil and criminal law. The drawing must be
returned at our request