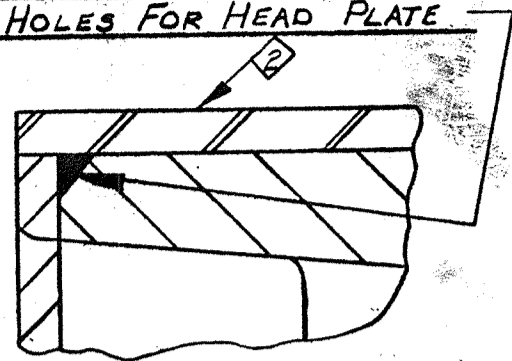
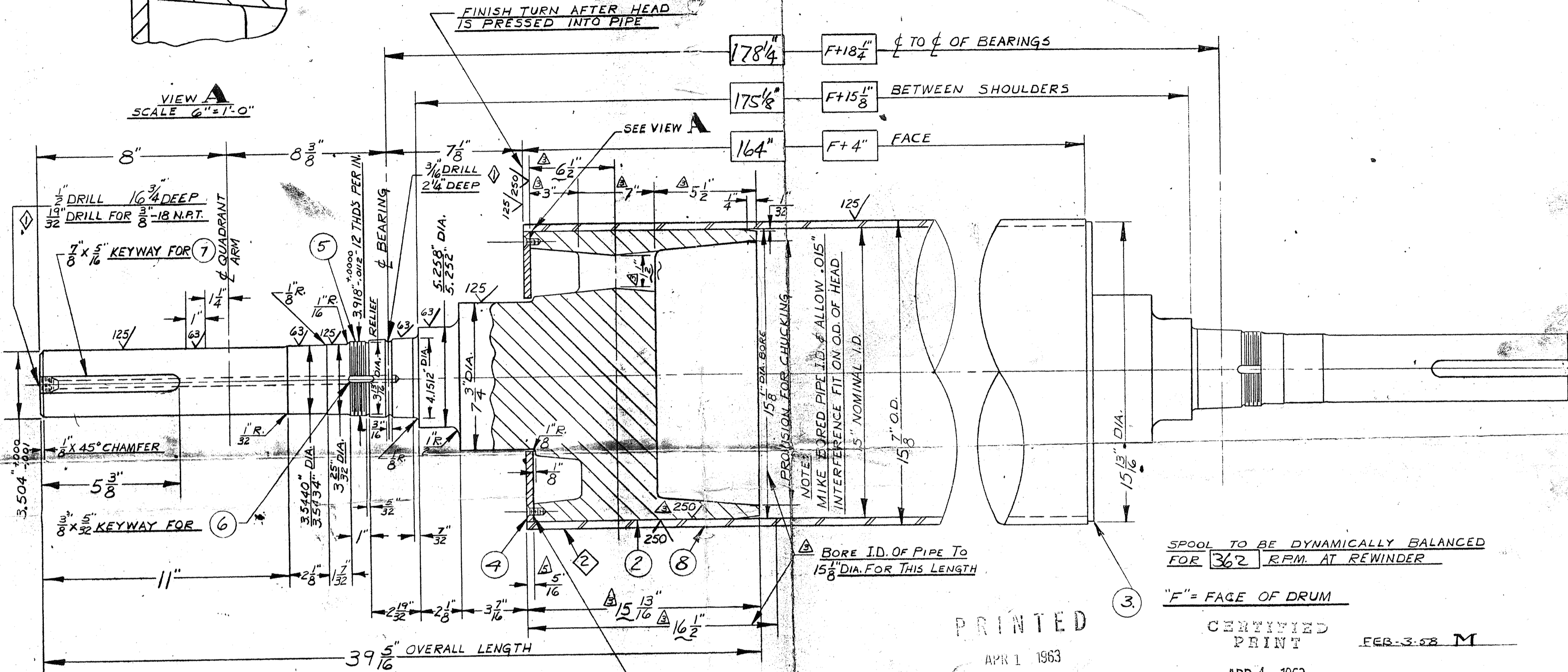


NOTCH HEAD 6 PLACES APPROX. 1/4" X 2" LONG
EQUALLY SPACED FOR WELD, EACH END -
TO MISS TAPPED HOLES FOR HEAD PLATE



VIEW A
SCALE 6"=1'-0"

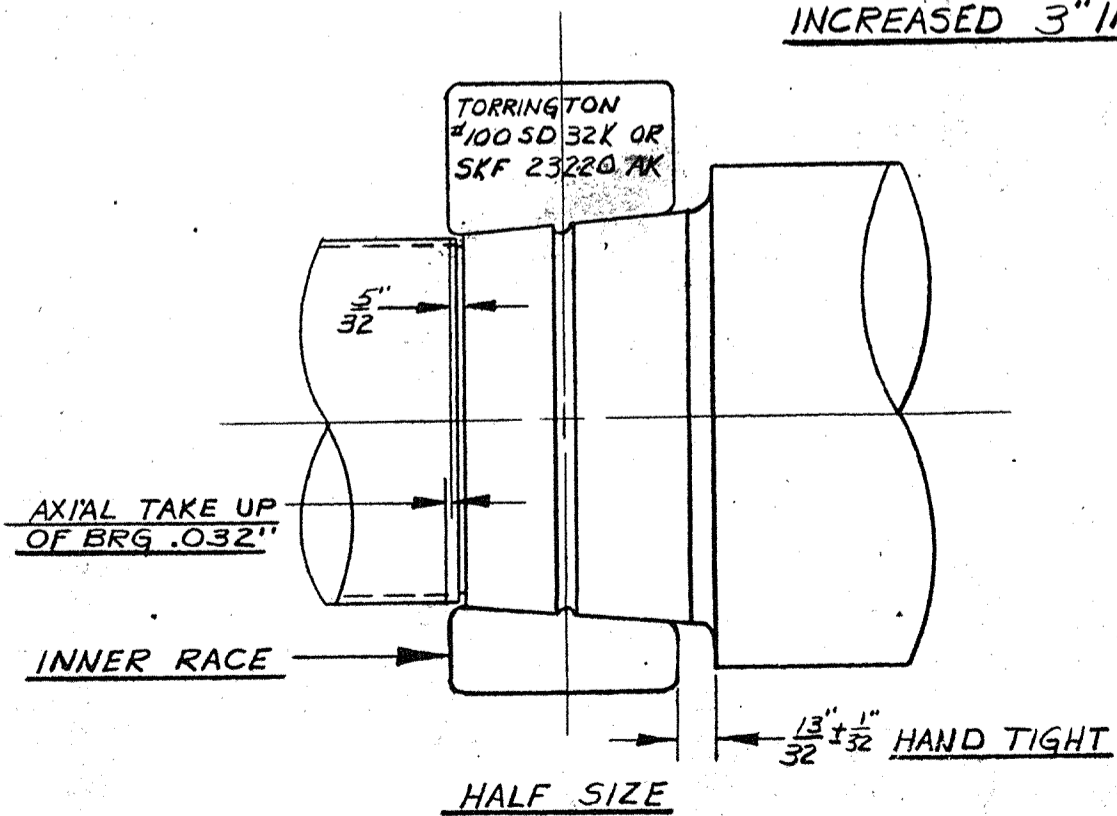


NOTE:
THIS IS A STD. ROLL HD.
INCREASED 3" IN LENGTH

3/8" TAP - 3/4" DEEP - 4 HOLES
EQUALLY SPACED ON 14 1/4" B.C.

NOTE:
THIS SPOOL TO BE USED WITH
14" COUPLING ONLY DWG. NO. C-2035

FIT IN PIPE 3" LONGER THAN STD



REF. D-131-417

ALL FINISHES DESIGNATED BY A. S. A. STANDARDS IN MICRO-
INCHES. ANGULAR TOLERANCE ± 1/2°. MACHINED FRACTIONAL
DIMENSIONS ± .015" UNLESS OTHERWISE SPECIFIED

SPOOL TO BE DYNAMICALLY BALANCED
FOR 362 RPM. AT REWINDER

"F" = FACE OF DRUM

PRINTED

APR 1 1963

THE BLACK-CLAWSON CO.

CERTIFIED
PRINT

FEB-3-58 M

APR 4 1963

BLACK-CLAWSON CO.

5-7936

QTY	UNIT	MATERIAL	DESCRIPTION
4	8	1	STEEL 16" O.D. PIPE 1/2" WALL (64 1/2) (F+4) + 1/2"
8	7	2	STEEL STD KEY 7/8" X 5/8" X 5 3/8" LONG
8	6	2	PURCH. LOCKWASHER #W-20
8	5	2	PURCH. LOCKNUT #AN-20
4	4	1	B-4026 HD. PLATE 15 1/16" O.D. X 5/16" THICK
4	3	1	B-4026 HD. PLATE - 15 13/16" O.D. X 5/16" THICK
8	2	2	#11 BLY. INTEGRAL HD. & JOURNAL - PATT. 36519A
4	1	1	ASS'Y 15 1/8" DIA. REEL SPOOL

DATE	SYM.	REVISION	BY	APP'D.	ORDER NO.	TOTAL REQ.	ITEM NO.	NO. REQ.	MATERIAL DRW. NO.	DESCRIPTION
8-3-61	△	HD. PLATE RECESSED								
1-5-59	△	PATT. 36519A WAS 31838 ALT. 2								
12-9-58	△	PATT. ALT. TO INCREASE HD. FIT FROM 12 1/2" TO 15 1/2" NOTE # 1	DJ	A. H. L.						
2-12-57	◇	WELD 4 PLACES ADD OF STUD REMOVED	BGS							
12-26-56	◇	DRILLED HOLES ADDED	DRH	BGS						

BLACK-CLAWSON
PAPER MACHINE DIVISION
WATERTOWN, NEW YORK
CUSTOMER CONTAINER CORP.
DATE 10-23-56
ASSY. 299C-107
SCALE 3"=1'-0"
197-C-112