

Vacuum Conveyor System

Powder Handling Solution



Application field

Dispensing area

Process area

Tableting

...

The VCS conveyor is the right solution wherever there is a powder that has to be moved against gravity without any demixing risk.

Main Characteristics

The VCS conveyor system consists of 4 main blocks :

Power head

Stainless Steel Filter

Vessel

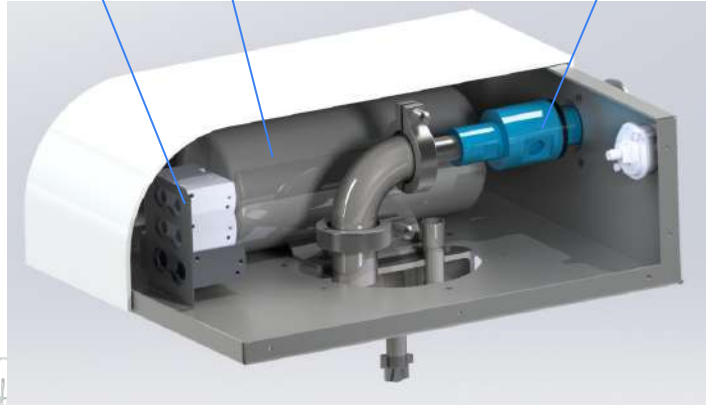
Discharge valve

Power Head

Electro-Valves

Filter Washing
Air vessel

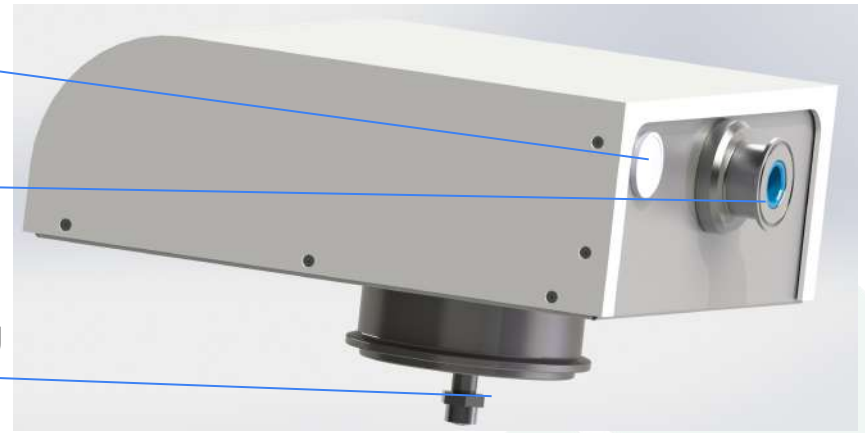
Venturi Ejector



Pressure
Indicator

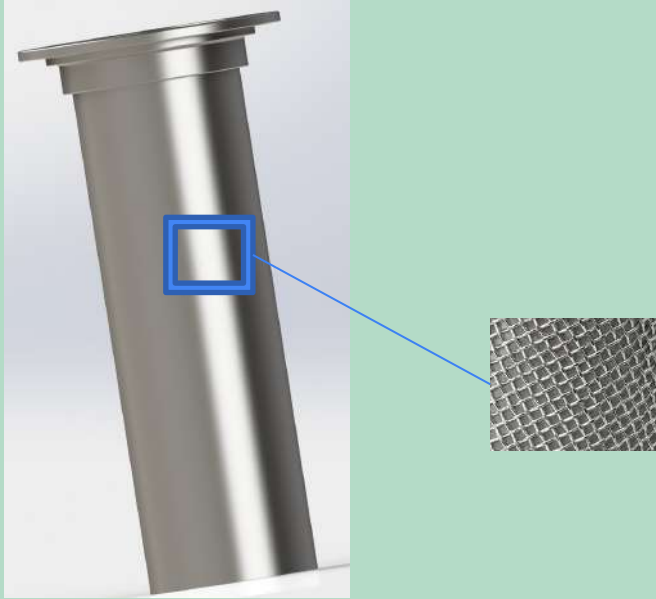
Exhaust air
Connection

Filter Washing
Air Nozzle



- Only one side for connections IN/OUT
- Stainless Steel air vessel for counter flow washing cycle on the filter
- Adjustable geometry of the Venturi ejector
- Manifold of the air distribution
- Triclamp connection to the main vessel

Stainless Steel Filter



- Multi layer filter
- Filtration level up to 5 μm
- Stainless Steel Aisi 316 L
- High efficiency
- High cleanability

Vessel

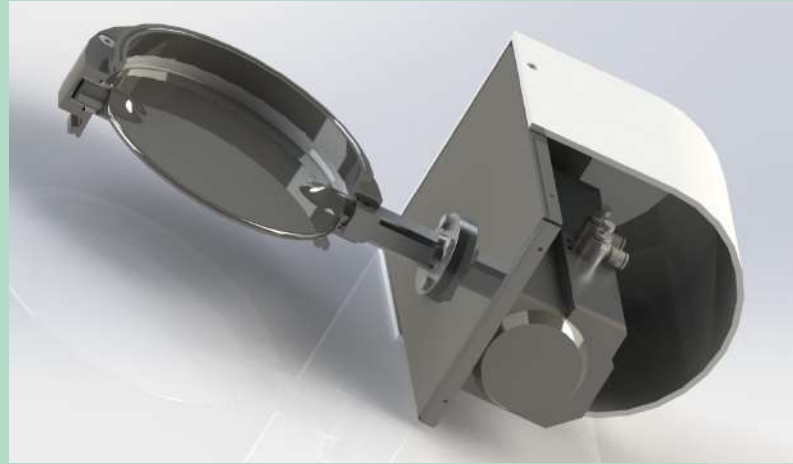
- Stainless steel Aisi 316 L
- Three different sizes: DN150, DN200, DN250
- High quality surface finishing.
 - Inside: mirror polished $Ra < 0,5 \mu m$
 - Outside: Satin finished $Ra < 1,2 \mu m$
- All Grounded weldings
- Triclamp connection on both sides
- Powder inlet 2" TC BS 4825-3



- Simple and clean design

Discharge Valve

- Sanitary butterfly valve
- Triclamp connections on both sides
- FDA approved gasket: Silicone, EPDM, Viton
- Pneumatic actuator for motion control
- TC connection between actuator and valve
- White lexan cover



Control Panel

- Wall mounted or through the wall installation
- PLC Siemens technology
- Scalable automation control
- Stainless Steel carpentry

Options

- The **Suction Lance** is a Sanitary Aspiration Lance DN 50 made of AISI 316 st. st. Mirror Polished with Ground Welds. The Lance is complete with an adjustable feeding element for secondary air to fluidise the product at the entry of the pipe. The Lance is complete with a TC for connection to the Flexible Hose.
- A **Flexible Hose** is supplied according to the distance between the discharge point and the loading point (in the basic supply 4 metres have been included). The material of the hose is “food grade” certified, with wire for earthing. The diameter of the Flexible Hose is 2” TC.

Options

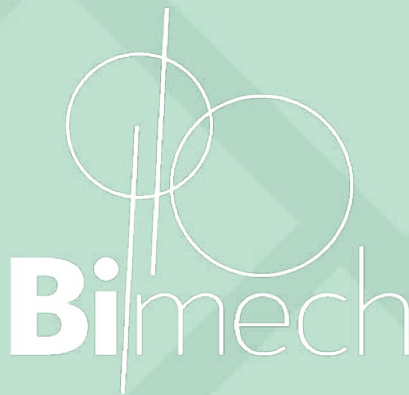
- CIP and SIP version;
- Atex 2G/D version
- Inertized version
- Pneumatic control panel with ATEX components inside

Some Example





Omp
gruppo omp



OMP S.p.A Società soggetta a direzione e coordinamento della Meccanica CT s.r.l.

Sede Legale Via Di Pietro Adalgiso, 1 – 66100 Chieti (CH)
www.gruppomp.com
C.F. - P.IVA 0243736 0692
e-mail: info@ompspa.eu
Cap. Soc. Euro 800.000,00 i.v. - C.C.I.A.A. CHIETI REA n.178909

Sede Operativa Divisione 1

Via Di Pietro Adalgiso, 1 66100 Chieti (CH)
Tel. +39 0871.565624
Fax. +39 0871.551110

Sede Operativa Divisione 2 & Bimech S.r.l.

Nucleo industriale PRT, C.da Saletti, 66020 Paglieta (CH)
Tel. +39 0871.565624
Fax. +39 0871.551110