

# EDGETEQ T-100 / T-200

**Easy to use and enable precise processing.**

Our flexible machines love your edge.



# Shaped parts and straight edges

## EDGETEQ T-200 – „one“ machine for all cases

**THE FLEXIBLE MACHINE CONCEPT.** The EDGETEQ T-200 represents a flexible machine concept. The aim of the development was to present a machine for the

standard processing of shaped parts as well as to enable processing of smaller quantities of straight workpiece edges economically and safely.



### DIRECT GLUE APPLICATION

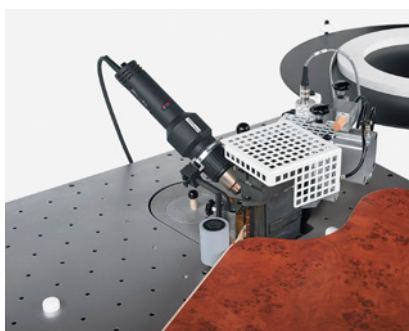
The EDGETEQ T-200 is characterized by the application of adhesive to the edge material. The roller material can be cut to length either via foot switches or, in the case of mass production, by entering the edge length in the length counter. During processing, the workpiece rests on individually positionable distance cams and can thus be precisely edged without a template. Thanks to the flexibility of the EDGETEQ T-200, this applies to both shaped parts and straight parts.

### EDGETEQ T-100

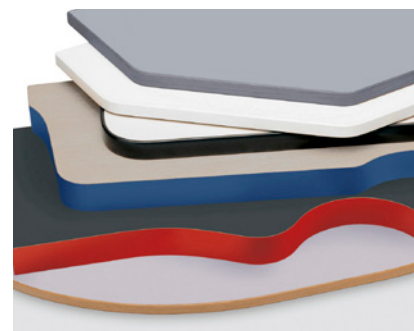
Workpiece thickness	10 - 55 mm
Workpiece width	min. 30 mm
Edge length	min. 180 mm
Edge thickness	0,5 - 3 mm
Coil cut-off	0,5 - 1,0 mm (Edge height max. 60 mm)
Coil cut-off	1,0 - 3,0 mm (Edge height max. 30 mm)
Feed speed	variable 3,0 - 9,0 m/min
Working height	925 mm
Machine dimensions LxW	2078 mm x 1186 mm
Electrics	400 V – 3 Ph – 50 Hz
Pneumatic	6 bar
Weight	approx. 280 kg



**Intuitive operation via 3,5“ touch display.**



**Additional heating unit (optional)**  
To pre-heat thick PVC-edges.



# Flush trimming of shaped parts

## EDGETEQ T-100 – reliable – efficient

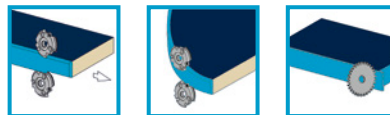
The EDGETEQ T-100 has been conceived as complementary to the contour edge banding machine EDGETEQ T-200. The main application of the T-100 is shaped workpieces, where

internal as well as external radii can be processed. Also straight workpieces can be easily processed.



### SHAPED WORKPIECE TRIMMING TECHNOLOGY

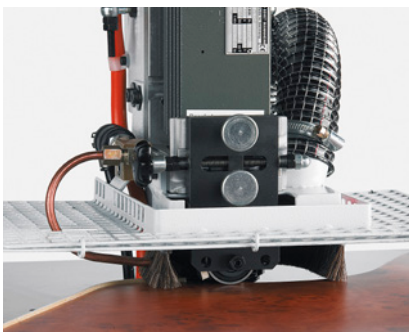
For small shops the EDGETEQ T-100 is offering a flexible and cost effective solution for their trimming requirements. In order to process internal and external shapes, the trimming motors are mounted vertically.



EDGETEQ T-100	
Workpiece thickness (Radius trimming)	16 - 55 mm
Workpiece thickness (chamfer trimming)	16 - 55 mm
Workpiece width	min. 30 mm
Edge thickness	max. 3 mm
Extraction	1 x Ø 80 mm
Working height	925 mm
Machine dimensions LxW	1130 mm x 765 mm
Electric	400 V – 3 Ph – 50 Hz
Pneumatic	6 bar
Weight	approx. 250 kg

Modern 12.000 rpm trimming motors, based on frequency-inverter-technology for maximum output. The standard machine is fully equipped to cover the entire range of trimming work on different workpieces. A centric copywheel and a fine adjustable top and bottom tracing device ensure optimum accuracy and perfect trimming results.

Subject to technical changes. Individual machine images can contain options.



#### Contour-trimming

Constant trimming results through the use of precise ball bearings to trace the workpieces.



#### End trimming unit EK 13 for EDGETEQ T-100 and EDGETEQ T-200 (optional)

For the exact end trimming of over hanging edge materials on shaped and straight workpieces.



**HOMAG Group AG**

[info@homag.com](mailto:info@homag.com)  
[www.homag.com](http://www.homag.com)

**YOUR SOLUTION**