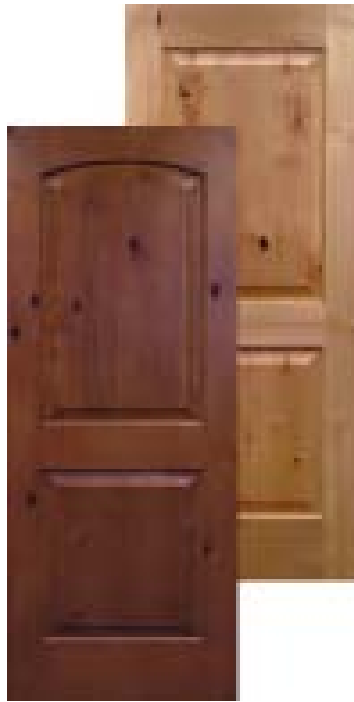
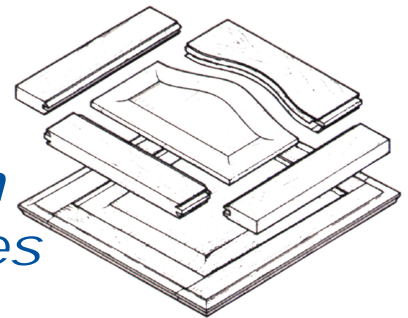


A Unique LOOK 2720

UNIQUE
MACHINE & TOOL CO.



*The **2720 M Series**
One machine, **with**
So many possibilities*



*The Unique Model 2720 is a single end machine designed for high quality production of cabinet and passage doors, as well as furniture & window parts. Its motor(s) are easily programmed for multiple cuts with hogging and finishing cuts to eliminate tear-out and extend tool life. The optional automatic tool changer **minimizes the chance of operator error and** increases productivity.*

4232 E. Magnolia St., Phoenix, Arizona 85034 U.S.A. Ph: (602) 470-1911 Fax: (602) 470-1916

Website: www.uniquemachine.com E-mail: sales@uniquemachine.com

A Unique LOOK 2720

UNIQUE
MACHINE & TOOL CO.

construction



It all starts with a one piece precision welded frame.



The frame is then loaded on an American made Haas CNC for precision machining. This Haas CNC is located at the Unique factory and is the largest CNC in the state of Arizona.



The frame is then painted and the assembly begins. Here you can see the precision THK rails and bearings that are used to provide precise and smooth motion for a perfect cut.

4232 E. Magnolia St., Phoenix, Arizona 85034 U.S.A. Ph: (602) 470-1911 Fax: (602) 470-1916

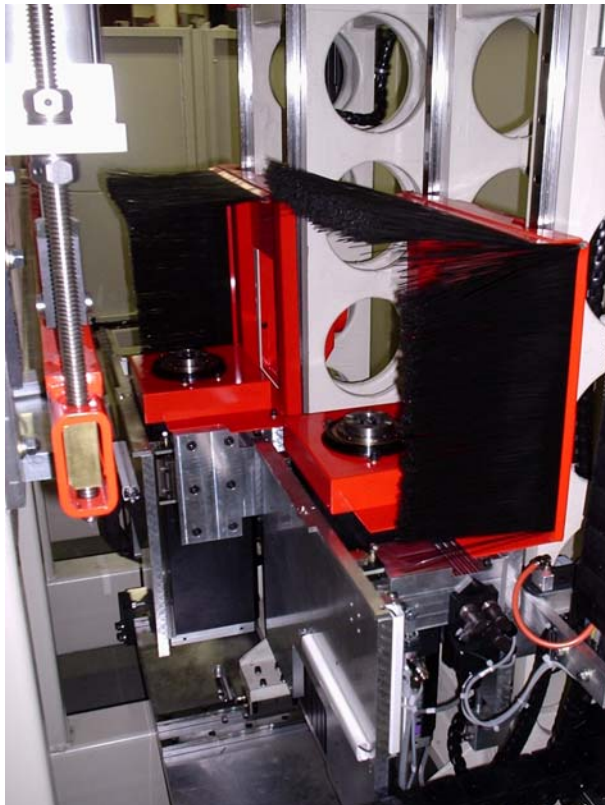
Website: www.uniquemachine.com E-mail: sales@uniquemachine.com

A Unique LOOK 2720

UNIQUE
MACHINE & TOOL CO.



THK guides and bearings are mounted to heavy cast iron columns to control the Z stroke on the machine



The machine can be equipped with 1 or 2 motors. A 10hp direct drive Himmel motor with 5" stack height is standard. A 14hp HSK quick change electro spindle is optional but very popular.



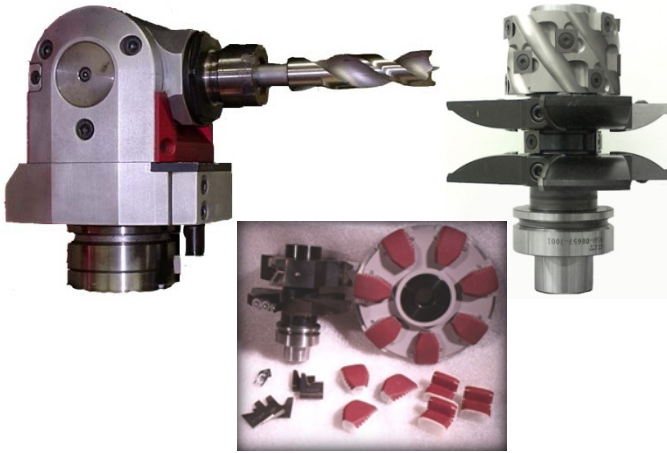
Included with the HSK option is an 18 position tool changer. Combine that with the ability to stack tools on the HSK arbors and a single machine can hold up to 54 tools.

4232 E. Magnolia St., Phoenix, Arizona 85034 U.S.A. Ph: (602) 470-1911 Fax: (602) 470-1916

Website: www.uniquemachine.com E-mail: sales@uniquemachine.com

A Unique LOOK 2720

UNIQUE MACHINE & TOOL CO.



The HSK option also adds the ability to use an aggregate drill head for the drilling of dowel holes in rails and stiles. With fully programmable spindle speeds, the use of profile sanding heads makes this a complete work station for door machining.



Unique uses a heavy pressure beam with large pneumatic cylinders for part hold down. There is no need for expensive vacuum pumps to ensure your parts are held properly.



Simple & easy part placement. After choosing what part you will be running, a pneumatic fence pops up for part placement and for end coping a squaring bar is used. There is no need for fancy lasers and expensive pods that are easily damaged if not positioned correctly



*Squaring bar / **stop** used for end coping & **fast** repeat part placement **to skip the measure and Go!***

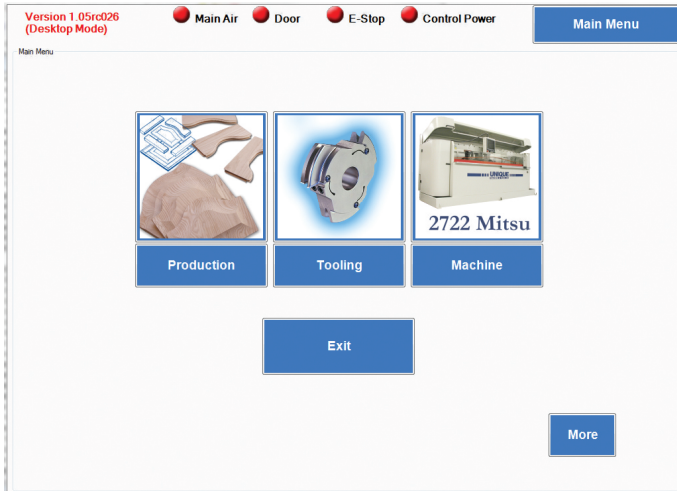
4232 E. Magnolia St., Phoenix, Arizona 85034 U.S.A. Ph: (602) 470-1911 Fax: (602) 470-1916

Website: www.uniquemachine.com E-mail: sales@uniquemachine.com

A Unique LOOK 2720

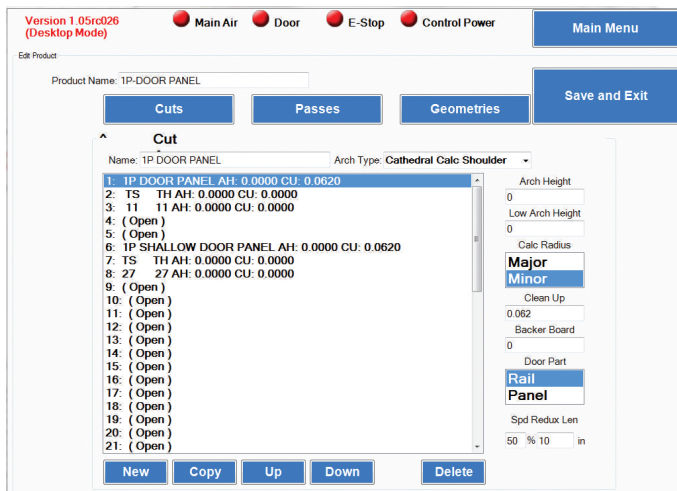
UNIQUE MACHINE & TOOL CO.

software



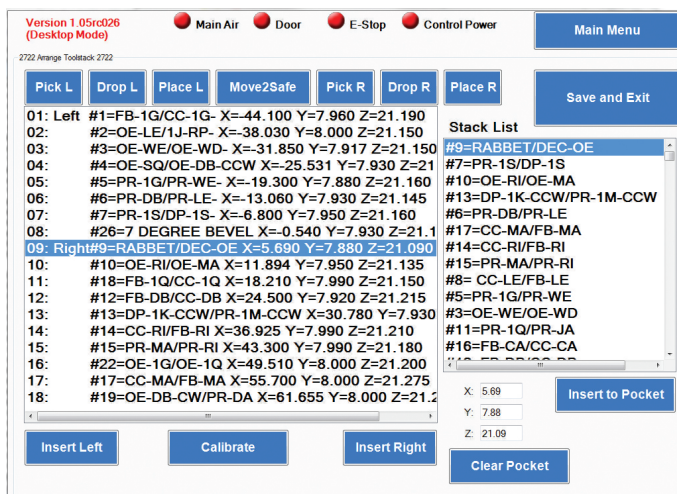
Unique developed **its** own machine software for one specific purpose. Making doors

Our statement "We make doors our business" really shows in the ease of use of the 2720 machine & software that is provided. Developed **by Unique with the assistance of clients in the field using previous versions of this and similar unique machine models**



From the main screen (top) there are 3 simple choices. Make product, setup the machine, or setup tooling.

From the "Product" selection **screen** you just touch the product you wish to make and hit either new cut or copy cut for multiple parts.



From the tooling menu you can see it is as easy as drag and drop to add your saved tools to the tool changer. There is a **huge library capacity** of tools that **be created and saved by the user.**

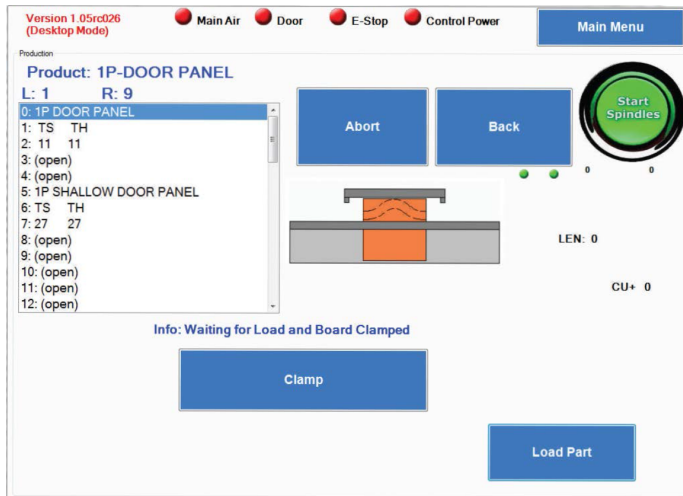
4232 E. Magnolia St., Phoenix, Arizona 85034 U.S.A. Ph: (602) 470-1911 Fax: (602) 470-1916

Website: www.unique-machine.com E-mail: sales@unique-machine.com

A Unique LOOK 2720

UNIQUE MACHINE & TOOL CO.

software



Once cuts are programmed and saved, they can easily be recalled and ran by any operator that knows the name of the product and can load the part on the table correctly. Once part is clamped by hitting the clamp button and the cycle is started the machine will then find the part, measure the part, cut with correct tool body, cut with correct RPM and cut direction



Software contains on screen diagnostics to assist in troubleshooting any machine issues. In the picture to the left the machine does not have any tools loaded so the machine gives an error as it cannot cut without tools.

4232 E. Magnolia St., Phoenix, Arizona 85034 U.S.A. Ph: (602) 470-1911 Fax: (602) 470-1916

Website: www.uniquemachine.com E-mail: sales@uniquemachine.com

A Unique LOOK 2720

UNIQUE MACHINE & TOOL CO.

components

Controls Engineering - UL508A Certified Assembly



Providing Unique Solutions
Since 1969



Providing Unique Solutions
Since 1969

Solid state Computer:

- Greater resilience to physical vibration, shock, and extreme temperature fluctuations
- Absence of moving parts means no mechanical wear-out
 - Higher capacity storage and data integrity
- Integrated error detection and correction mechanism, and technology improves data reliability
- These computers ship with solid-state drives.
This operating system minimizes the memory consumption of a solid state drive, while still allowing for a flexible operating system

In cabinet I/O:

- Communication interface network with built-in power supply converts 24V DC power to 5V DC backplane power helps maximize I/O performance
- Both horizontal and vertical mounting options available (no de-rating required) delivers added versatility and flexibility
- Compact design makes installation easier in limited panel space

Servo Control Platform:

- Modular design for easy installation, Extremely reliable & field proven product holds strong in the worst of environments
- Removable wiring system for economic system commissioning, troubleshooting, calibration, and diagnostics saves valuable time and money
- Set address for Servo Drives and Go, programming each servo drive is not required
16 Axis controller is used across multiple platforms at Unique for increased continuity

4232 E. Magnolia St., Phoenix, Arizona 85034 U.S.A. Ph: (602) 470-1911 Fax: (602) 470-1916

Website: www.uniquemachine.com E-mail: sales@uniquemachine.com

components

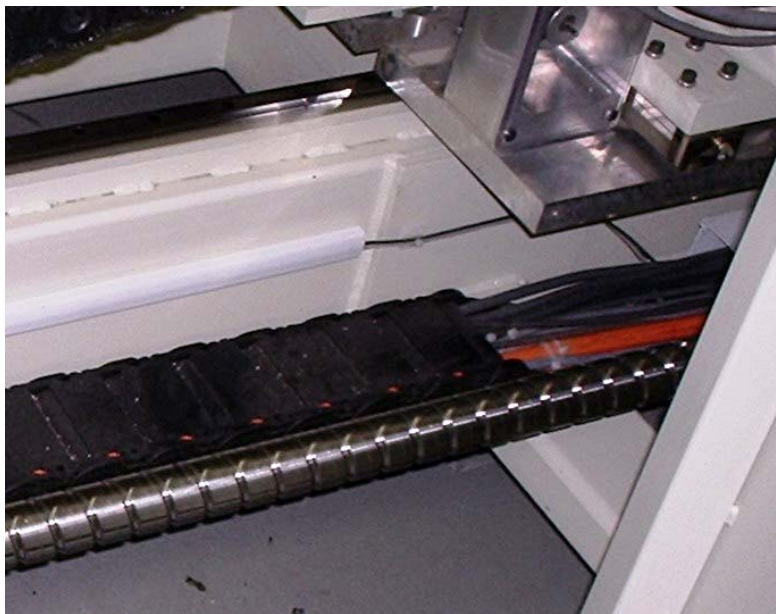
Ballscrews

Optimized design for high reliability. Use of computer simulation and FEM analysis, the cool type ballscrew features well thermal protection and high reliability.

Promote higher speed rotation and extra high Dm-N value (up to 200,000) Cool type ballscrew will eliminate high-speed rotation aftereffect, i. e., thermal problem, and promote higher speed rotation.

Prevent thermal distortion. Optimized heat transfer design to minimize heat generation and prevent thermal distortion.

Strengthen durability When operating repeatedly, friction between balls cause heat generation. That may be made balls oxidized or decarburized, and shortened the service life. Cool type ballscrew will strengthen durability under a cooling environment.



Extended lubricant life cycle. When using lubrication, minimum heat generation further inhibits deterioration in the quality of lubrication and extends the lubricant life cycle.

Keep temperature uniform and reduce warm-up time When high-speed operation, nut and shaft cooling effect indeed keep feed-system temperature constant and reduce warm-up time.

Higher feeding accuracy

Cooling effect of cool type ballscrew will stabilize against thermal expansion and equalize feeding accuracy.