

# DRILLTEQ D-110

**Drilling. Dowelling. Everything under control.**  
Our entry-level machine for horizontal drilling.





## Drilling and doweling – and always keeping a tight grip on everything.

Whether as individual machine or complementary product in connection with a CNC processing center – the DRILLTEQ D-110 has two tasks: horizontal drilling and doweling. And that makes the machine more efficient than ever before.

### YOUR SOLUTION

### MORE: HOMAG.COM



DRILLTEQ D-110

### CONTENTS

- 04 Highlights
- 06 Standards
- 08 Hardware – Software
- 09 Everything at a glance
- 10 Life Cycle Services
- 11 Technical Data



**Ergonomic machine operation**

- powerTouch monitor ergonomically adjustable in height
- Operating unit with keyboard tray and monitor
- Simple and individual adjustment to the relevant body size

**The highlights at a glance:**

- **Incredibly fast...**  
High-speed drilling and dowel insertion aggregate for accurate drill holes and precise positioning of dowels
- **Keeping a tight grip...**  
By using up to 8 clamping cylinders, adjustable to length and thickness, any workpiece is held firmly
- **Beneficial...**  
The lowerable center stop allows for flexible handling of workpieces thereby ensuring an optimum two-field operation
- **Established all over the world...**  
The powerful HOMAG Group software woodWOP



**High-speed doweling and drilling unit**

- For precise processing while drilling and doweling horizontally



**High-speed drilling spindles**

- 3 spindles can be called up individually, in a grid of 32 mm (optional)



**Fixed setting**

- Toggle switch for selecting the speed for the drill feed
- Setting 1 = max. speed of the drill feed
- Setting 2 = adjustable speed of the drill feed via potentiometer (e.g. for solid wood)



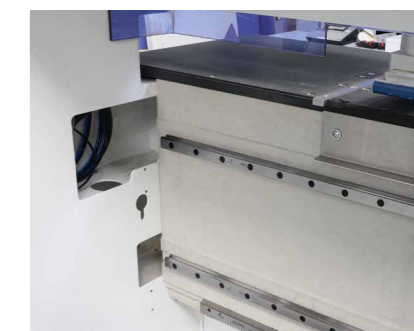
**Low-pressure glue pump**

- Double membrane pump, low-noise level and compact
- Standardised technology can be applied across all series



**Vibrating conveyor (option)**

- For automatic and reliable feed of standard dowels with dimensions 8x30 mm or 8x35 mm
- Other dowel dimensions on request



**Delivers what it promises**

- Strong steel frame construction combined with highly rigid vibration-absorbing machine bed consisting of fiber-reinforced SORB TECH mineral mixture
- High frame weight with minimal installation space ensures high absorption behavior by vibrations

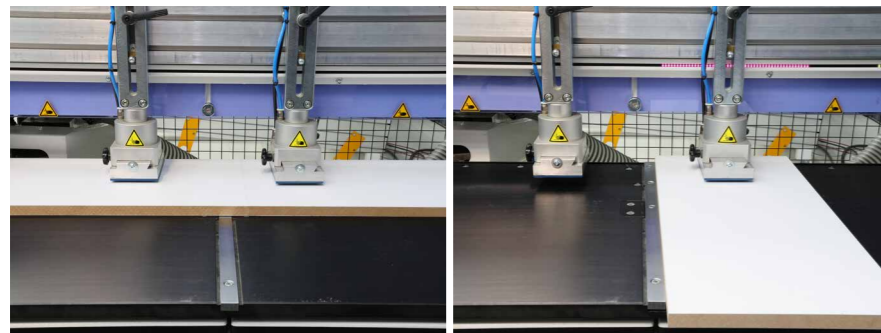
# All inclusive – Hardware

**WITH THE DRILLTEQ D-110 YOU ARE PROVIDED WITH TOP-QUALITY EQUIPMENT FROM THE VERY BEGINNING.**  
 Excellent processing quality is guaranteed in the long term by including fundamental technology already in the standard.



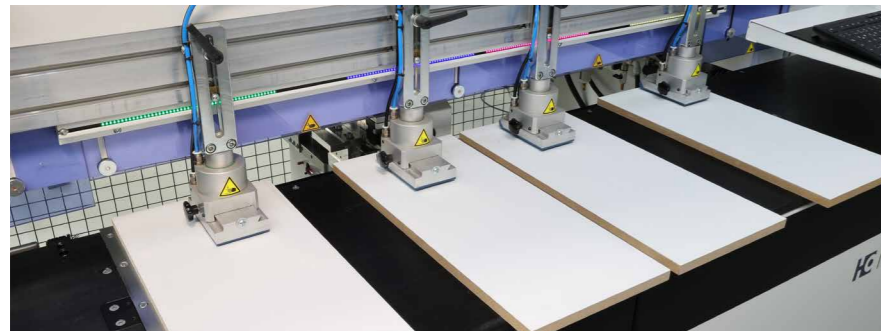
**Adjustable clamping cylinders**

- Up to 8 adjustable clamping cylinders enable a secure and gentle fixing of the workpieces



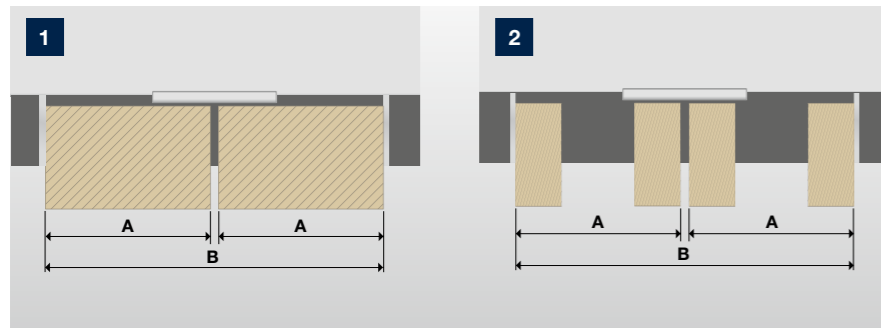
**Center stop**

- For flexible handling of workpieces
- Pneumatically lowerable
- Picture right: Active center stop



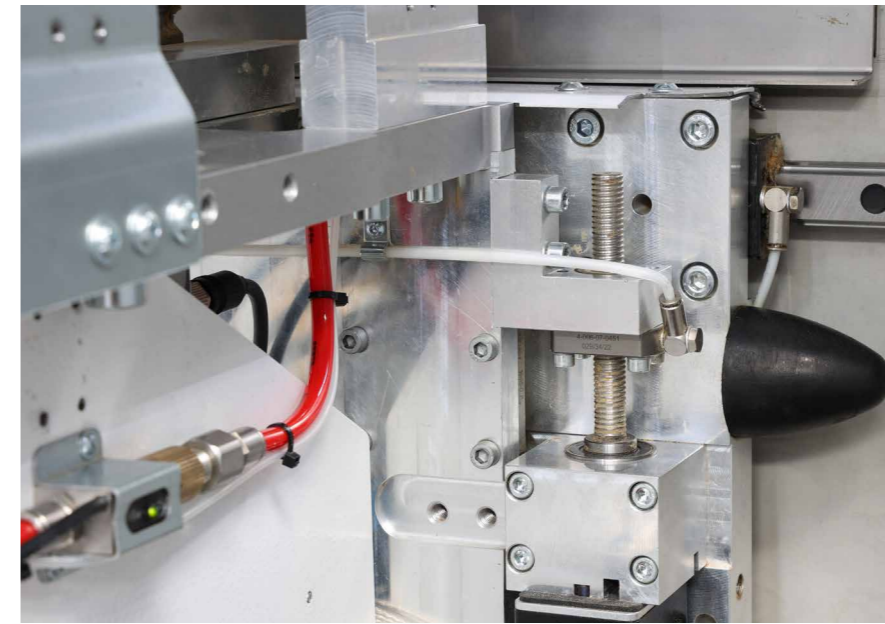
**Lateral stops**

- Pneumatically lowerable
- Allows the placement of workpieces > 1,250 mm (or 2,800 mm)



**Alternate operation**

- Depending on the workpiece dimensions the DRILLTEQ D-110 machines can be fed with up to 4 workpieces
- Illustration 1: **A:** 600 mm | **B:** 1.250 mm
- Illustration 2: **A:** 1.380 mm | **B:** 2.800 mm



**Servomotor-driven height adjustment of the drilling in Z-direction**

- For adaptation to workpiece thicknesses in the range of 10 – 60 mm



**Servomotorized adjustment of the depth in Y-direction**

- Precise adjustment of the drilling depth

## intelliGuide Classic

**Your benefit**

- Increased efficiency by faster operating procedures
- Error prevention by continuous visual control
- Improved ease of use



**OPTICAL LED ASSISTANCE SYSTEM** to assist the machine operator in the processing of workpieces. The LED bar lights in the areas where the workpieces are to be positioned. The length of the illuminated areas corresponds to the length of the workpieces to be positioned. Once the positioning is correct, the color of the LED bar changes.

# Hardware – Software

WITH THIS SOFTWARE PACKAGE YOU ARE »READY TO RACE«. You will receive one of the most established CNC programming systems, the woodWOP software, which has proven itself by more than 40,000 installations worldwide.



### Machine operation

- Modern and simple control of the machine functions
- 24"-TFT-Display
- Provision of teleservice capability
- USB frontside bus
- Ethernet connection 10/100 Mbit

### woodWOP

- Worldwide established CNC programming system – already more than 40,000 installations
- More safety and control in programming by 3D-presentations of all relevant elements

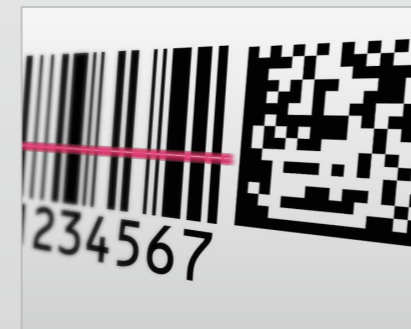
Please use our website!

Worldwide largest forum for woodWOP:  
forum.homag.com



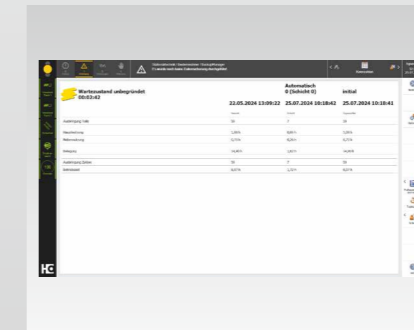
### Further software options

- woodWOP for external PC
- woodAssembler



### Barcode connection (optional)

- Barcodescanner / -software
- Supported barcodes: 1D – Barcode, 2D – Data Matrix Code
- Every workpiece is exactly identified for the further workpiece flow



### Machine Data Recording

- Collecting and evaluating machine states via time meter and event meter



### tapio-ready

- Simply "connect" the machine with tapio to use all innovative digital tapio products
- The free use of tapio MachineBoard is included in the standard

# Everything at a glance...

|                   | Length of the processing field |          | Drilling gear             |                            | Control of the axes |                     |                     | Features      |             |                                   |                    |                        |             |                   |   |                        |                    |                  |                                  |                         |                       |                          |
|-------------------|--------------------------------|----------|---------------------------|----------------------------|---------------------|---------------------|---------------------|---------------|-------------|-----------------------------------|--------------------|------------------------|-------------|-------------------|---|------------------------|--------------------|------------------|----------------------------------|-------------------------|-----------------------|--------------------------|
|                   | 1,250 mm                       | 2,800 mm | Horizontal with 1 spindle | Horizontal with 3 spindles | X axis              | Y axis <sup>1</sup> | Z axis <sup>1</sup> | Doweling unit | Gluing unit | Cleaning device for glue injector | Vibrating conveyor | Low-pressure glue pump | tapio-ready | Glue flow control | Pneumatic feed throttle for the drilling feed | Barcode reading system | X-measuring system | Air-conditioning | Special dimensions of the dowels | Add. doweling aggregate | Add. doweling chamber | Add. vibrations conveyor |
| DRILLTEQ D-110/12 | ✓                              | -        | ✓                         | ○                          | CNC                 | autom.              | autom.              | ○             | ○           | ○                                 | ○                  | ○                      | ✓           | ○                 | ✓   | ○                      | ○                  | ○                | ○                                | ○                       | ○                     | ○                        |
| DRILLTEQ D-110/28 | -                              | ✓        | ✓                         | ○                          | CNC                 | autom.              | autom.              | ○             | ○           | ○                                 | ○                  | ○                      | ✓           | ○                 | ✓   | ○                      | ○                  | ○                | ○                                | ○                       | ○                     | ○                        |

<sup>1</sup> Self-rigging / automatically adjustable

### Fast support:

94% resolution rate  
via our hotline

### Close to you:

1,350 service experts worldwide

### We get things moving:

Over 1,000 worldwide spare parts  
shipments each day

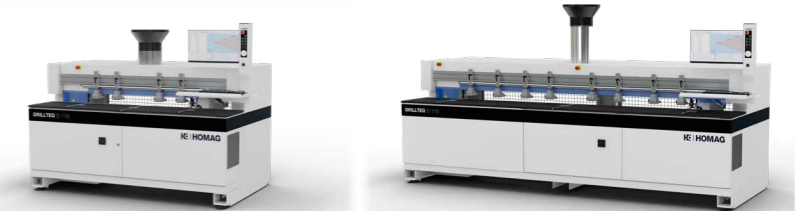
### No one else has that:

Electronic documentation on over  
150,000 machines, available in 28  
languages

## LIFE CYCLE SERVICES

**Improved performance, more efficient processes, faster help, assurance of availability and smarter working.**

VAL YOU comes from VALUE ADDED. Our objective is derived from this name: We create added value for your business by helping you get the most out of your processes. Every day.



### TECHNICAL DATA

| DRILLTEQ D-110            |        | 1.250         | 2.800         |
|---------------------------|--------|---------------|---------------|
| Workpiece length          | mm     | 20–1.250      | 20–2.800      |
| Workpiece width           | mm     | 20–800        | 20–800        |
| Workpiece thickness       | mm     | 10–60         | 10–60         |
| Compressed air connection | Zoll   | R 1/2"        | R 1/2"        |
| Compressed air            | bar    | min. 7        | min. 7        |
| Total connected voltage   | kW     | ca. 4,5       | ca. 4,5       |
| Extraction connection     | mm     | 1 x Ø 80      | 1 x Ø 80      |
| Extraction speed          | m/sek. | 30            | 30            |
| Supply voltage            | A      | 10            | 10            |
| Total machine weight      | kg     | ca. 1.100     | ca. 1.500     |
| Installation dimensions   |        |               |               |
| L                         | mm     | 2.400         | 3.955         |
| W                         | mm     | 1.460         | 1.460         |
| H                         | mm     | 1.790 (2.420) | 1.790 (2.420) |

\* Width incl. control panel



**HOMAG Group AG**

info@homag.com  
www.homag.com

**YOUR SOLUTION**