

# JSM

## The price-performance winner



The JSM is an affordable all-round machine for **small** and **medium-sized craft businesses** with high demands on surface quality. It is available in two different working widths and three equipment packages. Depending on the package, it is ideal for **solid wood, veneer** and **lacquer sanding**.

- Available with 1-3 units
- Four pre-defined configurations, from standard to advanced
- **Calibration, finish sanding and intermediate lacquer sanding**
- **Panel cleaning**
- **Panels, solid wood or veneered workpieces**



Normal production volumes



Working width:  
1,100 & 1,350 mm



Max. units: 1-3



Stand-alone solution



Working from above

# JSM

Up to **3** heads in a single machine frame.

A working width **1,100** mm  
or **1,350** mm.

**4** head combination.

4

5

## Technical data

The JSM, with up to 3 heads and a working width of 1,100 or 1,350 mm, is configurable for various types of applications.

JSM					
Configuration	Number of heads	Working width mm/inches	Abrasive belt width mm/inches	Abrasive belt length mm/inches	Workpiece thickness min. – max. mm/inches
JSM.1 C	1	1,100/43" 1,350/53"	1,120/44" 1,380/54"	2,150/85"	3-160 / 1/8-6.3"
JSM.2 RC	2	1,100/43" 1,350/53"	1,120/44" 1,380/54"	2,150/85"	3-160 / 1/8-6.3"
JSM.3 RRC	3	1,100/43" 1,350/53"	1,120/44" 1,380/54"	2,150/85"	3-160 / 1/8-6.3"
JSM.3 MRC	3	1,100/43" 1,350/53"	1,120/44" 1,380/54"	2,150/85"	3-160 / 1/8-6.3"
JSM.3 RRH	3	1,100/43" 1,350/53"	1,120/44" 1,380/54"	2,150/85"	3-160 / 1/8-6.3"

JSM

2



- 1** Safe, secure workpiece transport ensured by high-quality, long-lasting rubberized rollers
- 2** Integrated switch cabinet
- 3** 15.6" touchscreen operator terminal.
- 4** Doors on the belt changing side with window insert. This enables operators to view the process
- 5** The drive motors are located in the lower part of the machine, requiring no additional space and protected from dust.

Compressed air consumption bar / max l / min (without options)	Dust extraction approx. m <sup>3</sup> /h (without options)	Length / Width / Height mm	Weight approx. kg
5.5 bar / 50 l/min	1,020/1,850	1,520/1,730/2,030 1,520/1,980/2,030	1,350/1,580
5.5 bar / 50 l/min	2,040/3,680	2,020/1,730/2,030 2,020/1,980/2,030	1,980/2,250
5.5 bar / 50 l/min	3,060/5,510	2,720/1,730/2,030 2,720/1,980/2,030	2,500/2,930
5.5 bar / 50 l/min	4,080/7,350	2,720/1,730/2,030 2,720/1,980/2,030	3,150/3,690
5.5 bar / 50 l/min	3,060/5,510	2,720/1,730/2,030 2,720/1,980/2,030	2,500/2,930

# JSM

## POSSIBLE STANDARD CONFIGURATIONS



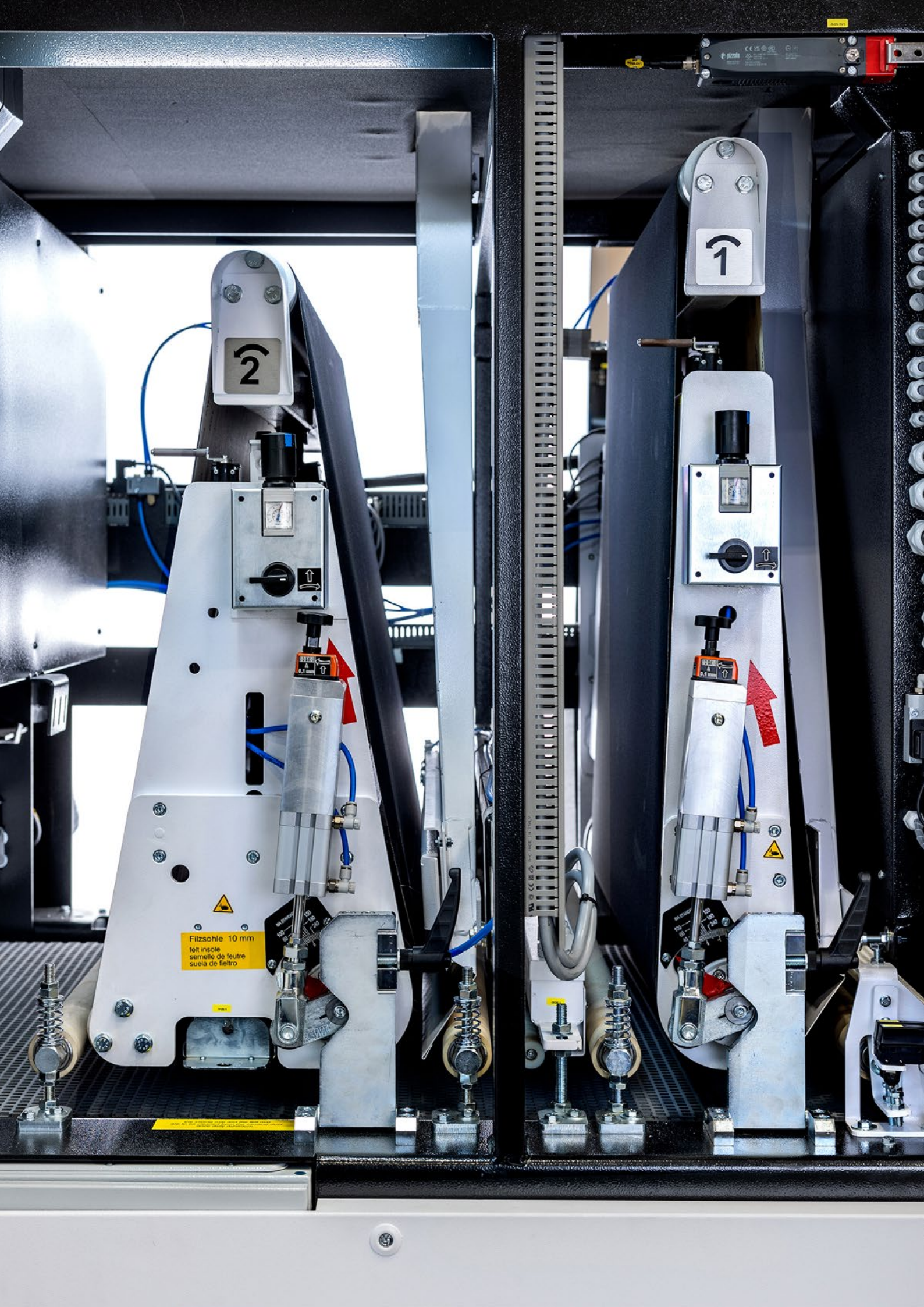
Configuration														
	C			RC			RRC			MRC		RRH		
Variant	Standard	Performance	Advanced	Standard	Performance	Advanced	Standard	Performance	Advanced	Standard	Standard PLUS	Standard	Performance	Advanced
Calibration	•	•	•	••	••	••	•••	•••	•••	•••	•••	•••	•••	•••
Solid Wood	•	•	•	••	••	••	•••	•••	•••	•••	•••	•••	•••	•••
Veneer sanding	-	••	••	-	••	••	-	••	••	•	•	-	••	••
Lacquer sanding	-	•	••	-	•	••	-	•	••	-	-	-	•	••

H= Longitudinal unit with pressure segment belt

C= Combi unit (longitudinal unit with calibration roller)

R= Roller unit

M= Cutter unit



2

1

Filtzsole 10 mm  
felt insole  
semelle de feutre  
suela de fieltro

READY  
0.5 mm

READY  
0.5 mm

READY  
0.5 mm

READY  
0.5 mm

READY  
0.5 mm

READY  
0.5 mm

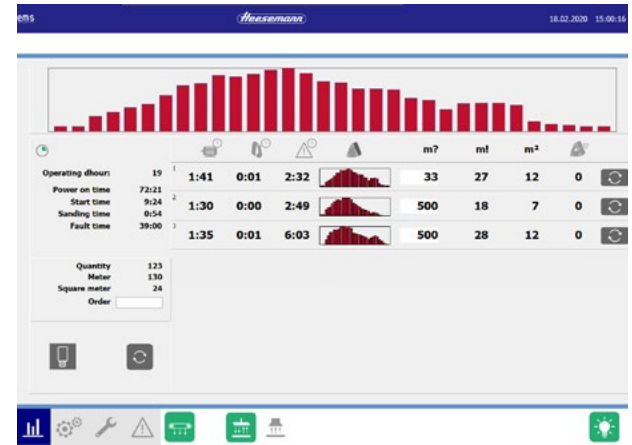
# AS STANDARD ALL INCLUSIVE

With the JSM, you are optimally equipped from the start. Even the standard models includes essential technologies that ensure consistently high processing quality over time.



## Roller table

- In the inlet and outlet
- Guarantee simple workpiece handling



JSM

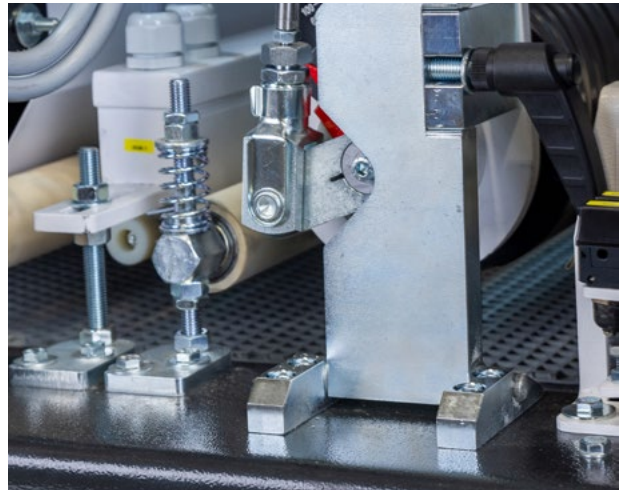
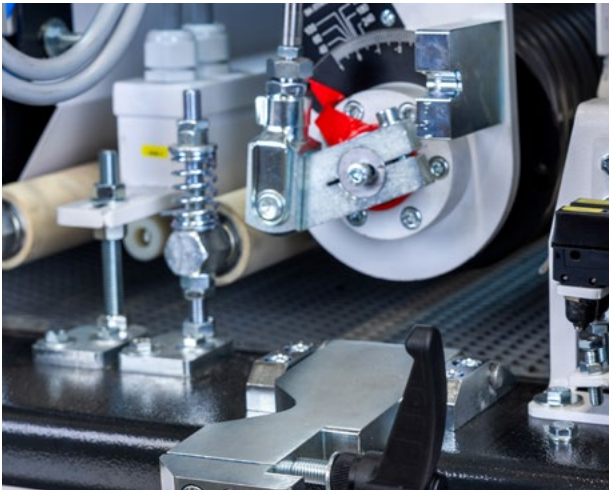
6

## 15.6" touch display

- User-friendly and ergonomic operation using the large 15.6" touch display
- Fast and precise touchscreen control
- Intuitive operation via clearly understandable icons (proven Heesemann user interface)

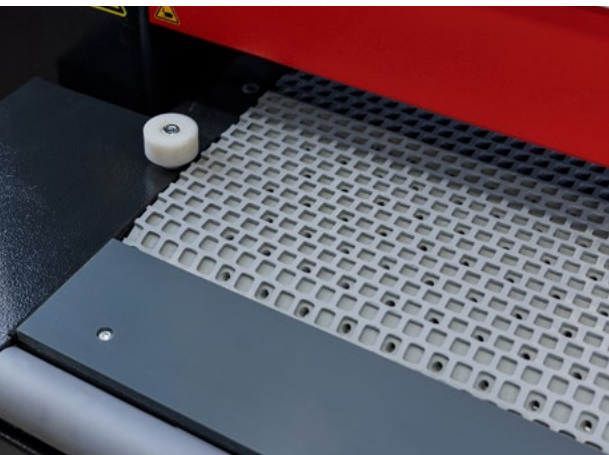
## Belt Manager

- Shows the abrasive belt wear across the working width
- Signals to the user when a belt change should take place



### Head locking

Safe and simple quick-lock heads to rapidly change the sanding belt



### Vacuum clamping system

- Safely transport small or lacquered workpieces



### Profiled contact rollers made of:

- Steel
- Rubberized in various Shore hardnesses

### Contactless sanding belt oscillation

- The sanding belt is controlled by means of light scanners
- This achieves extremely smooth oscillation

### Standard highlights include:

- Absolutely even, stable Heesemann transport table
- Energy-saving vacuum
- Maintenance-free electronic braking system

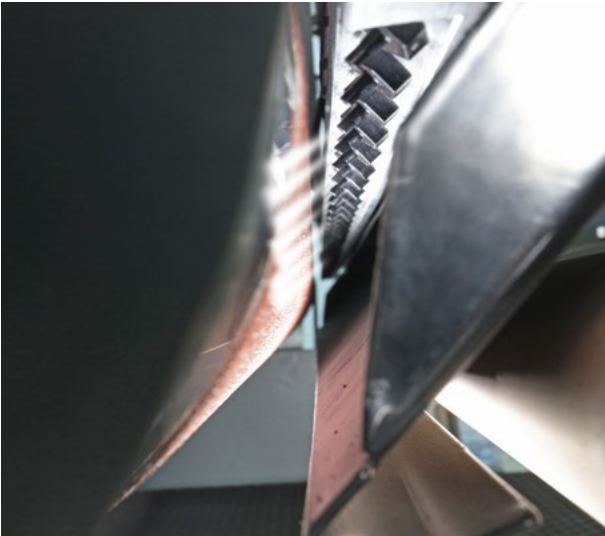
# LEVEL UP YOUR MACHINE

Level up your machine: The Performance and Advanced equipment packages offer useful additional features

<p><b>ADVANCED</b></p>	<ul style="list-style-type: none"> <li>• CSD <b>magnetic pressure beam system</b> for adaptable sanding</li> <li>• Sanding belt motor with frequency inverter for a infinitely variable <b>sanding belt speed</b> on all fine sanding units</li> <li>• <b>Sanding belt cleaning</b> in the immediate vicinity of the sanding level (oscillating belt cleaning device)</li> <li>• <b>Belt Manager</b> Software</li> <li>• <b>Vacuum table</b></li> <li>• <b>Vacuum blower</b></li> <li>• <b>Workpiece cleaning</b> in the outfeed (oscillation blower)</li> </ul>
<p><b>PERFORMANCE</b></p>	<ul style="list-style-type: none"> <li>• CSD <b>magnetic pressure beam system</b> for adaptable sanding</li> <li>• Sanding belt motor with frequency inverter for a infinitely variable <b>sanding belt speed</b> on all fine sanding units</li> <li>• <b>Sanding belt cleaning</b> in the immediate vicinity of the sanding level (oscillating belt cleaning device)</li> <li>• <b>Belt Manager</b> Software</li> </ul>
<p><b>STANDARD PLUS</b> (Only available in the MRC model)</p>	<ul style="list-style-type: none"> <li>• <b>acp:</b> Pneumatically controlled, non-segmented acp® pressure beam system</li> <li>• <b>Vacuum table</b></li> <li>• <b>Vacuum blower</b></li> <li>• <b>Workpiece cleaning</b> in the outfeed (oscillation blower)</li> </ul>
<p><b>STANDARD</b></p>	<ul style="list-style-type: none"> <li>• <b>acp:</b> Pneumatically controlled, non-segmented acp® pressure beam system</li> </ul>

# OPTIONAL EXTRAS THAT ARE REALLY WORTH IT!

Do you want to take things to the next level? Our optional extras offer you all the options you need to adapt your wide-belt sanding machine to your unique production needs.



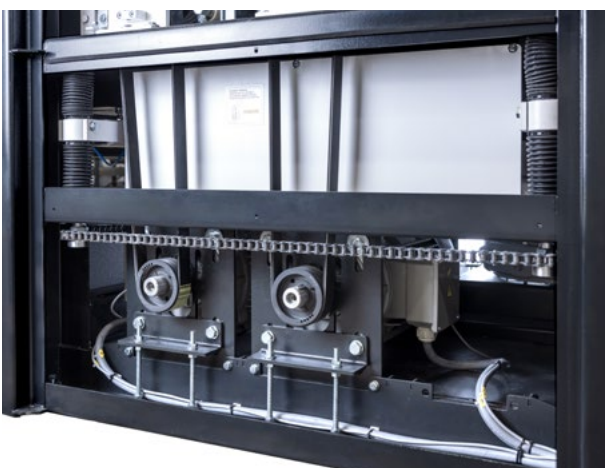
## **Air-jet belt blower**

- Integrated air-jet belt blower
- Workpiece-controlled for low compressed air consumption



## **Cutter head**

- High removal rate
- Can be pulled out to the side for easy tool changing



## **Steplessly variable cutting speed control**

- Speed control via frequency inverter
- Power transmission via poly-V-belt
- Applies to all fine sanding units
- Infinitely variable feed speed from 3-12 (option)

# HEESEMANN CSD<sup>®</sup> MAGNETIC PRESSURE BEAM

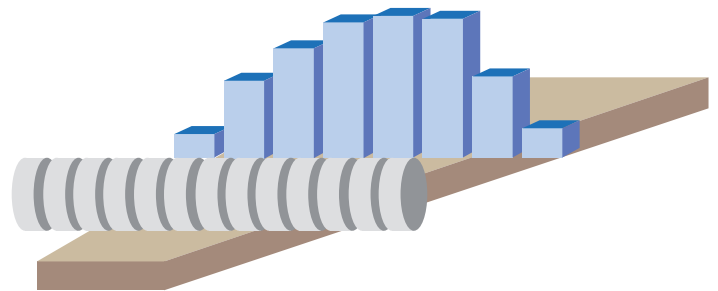


## Adaptive sanding for uniform surfaces

Precise control of the sanding pressure is crucial to achieve consistently high grinding quality. The computer-controlled selective pressure control of the CSD<sup>®</sup> magnetic pressure beam system enables the sanding pressure of each element on the pressure beam to be steplessly adjusted in a matter of milliseconds. Fine scanning on the infeed of the machine ensures the exact calculation of the required pressure.

This elastic pressure beam is capable of compensating for tolerances in the workpiece thickness of 2 mm and more, on a single workpiece and also between workpieces.

The magnetic CSD<sup>®</sup> pressure beam system eliminates the soiling of the pressure beam elements that can otherwise occur with pneumatically operated systems. The CSD<sup>®</sup> magnetic pressure beam is installed on all Heesemann cross sanding and longitudinal sanding units as a standard feature.



# HEESEMANN ENERGY MANAGEMENT SYSTEM (EMS)



## Benefits for the environment and users



With Heesemann's EMS energy-saving system, our environment and users benefit equally: Decreasing energy consumption reduces both the burden on the environment and your costs.

When no workpieces enter the machine, the drive motors in the units reduce speed. This significantly reduces the energy consumption of the machine depending on the workload. When new workpieces are run in, all motors are quickly started up again.

Karl Heesemann  
Maschinenfabrik GmbH & Co. KG  
Reuterstraße 15  
32547 Bad Oeynhausen

[verkauf@heesemann.de](mailto:verkauf@heesemann.de)  
[www.heesemann.de](http://www.heesemann.de)



2025-05