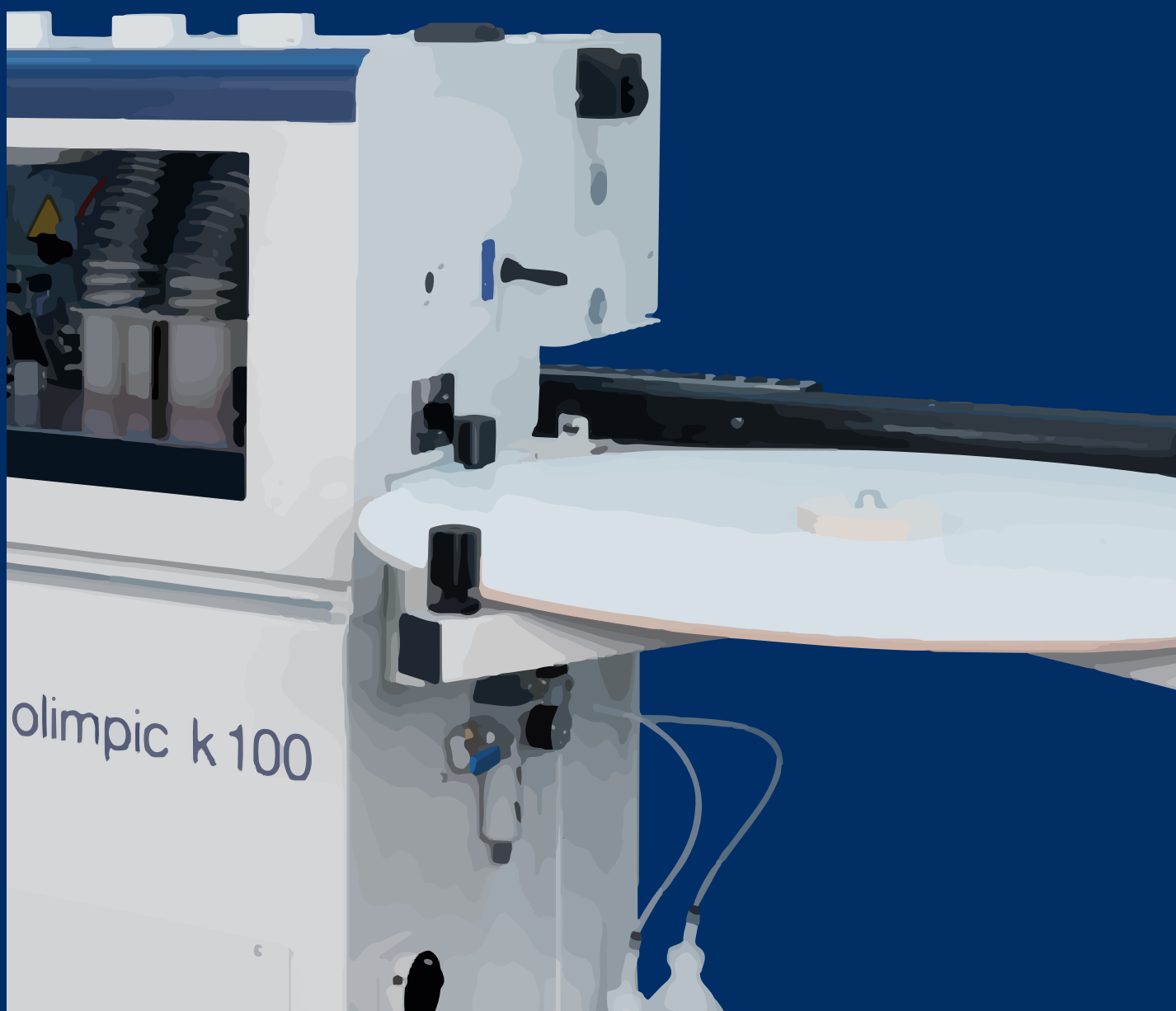


olimpic k 100

compact automatic edge bander



olimpic k100

compact automatic **edge bander**

High level of inclusive equipment, advanced technological solutions and typical features from higher range models guarantee the very best quality panels.

The features, coupled to its ease-of-use, make the olimpik k 100 the perfect edge bander for small woodworking and panel processing companies.



OLIMPIC		K 100
Panel thickness	mm	8 - 50
Edge thickness	mm	0,4 - 3 (5)
Feed speed	m/min	7
Compressed air	bar	6



- cutting
- edge banding**
- boring-routing
- calibrating-sanding
- assembling

olimpic k100

technological **advantages**



PANEL MOVEMENT SYSTEM: DESIGNED FOR A PERFECT FINISH

The **very best finishing of the panel edge** is also guaranteed by the panel conveying track, which prevents the panel having the feed affected by the typical pulse generated by the pinion of a traditional feed track.



toptech

VC-M GLUING UNIT:

SOLID WOOD EDGE BANDING UP TO 5 MM THICKNESS

The versatility of edge banding application allows the gluing, with automatic loading, of edge banding in strips up to 5mm thickness with a 50mm panel height (**the best performance in its category**).

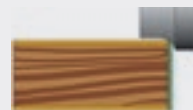


R-M TRIMMING GROUPS:

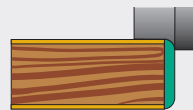
3 DIFFERENT MACHINING

Rapid machining changeover between thin, thick and solid wood edges due to the 3 manually selectable working positions and the "Combi" tool supplied as a standard feature.

"COMBI" TOOL



Thin edge



Thick edge



Solid wood



olimpic k100

operating groups

"ORION ONE" CONTROL SYSTEM: SIMPLE AND INTUITIVE MACHINE USE

The control with its buttons and customised graphics allows an error-free selection of the main machine functions.

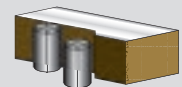
- visualisation of the main production data
- diagnostics to obtain a quick solution to any malfunctions



RT-M PANEL EDGE TRIMMING GROUP: A PERFECT EDGE JOINT LINE

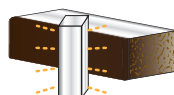
Surface without any imperfection on the panel edge before gluing. Utilizes 2 large diameter diamond tools (80 mm) with opposite rotation and timed intervention.

- panel edge trimming up to 2 mm thickness



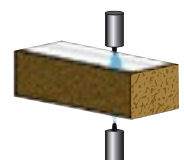
PANEL HEATING DEVICE

It improves the glue adhesion on the panel edge.



ANTI-ADHESIVE GROUP

The highest level of panel cleaning by utilising spray guns that prevent any sticking of excess glue on the upper and lower panel surfaces (opt.).

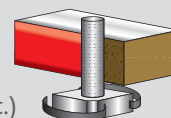




VC-M GLUING UNIT: PERFECT EDGE APPLICATION

Uniform and optimised glue application and an absence of excess glue on all types of materials due to the particular type of glue spreading roller utilised.

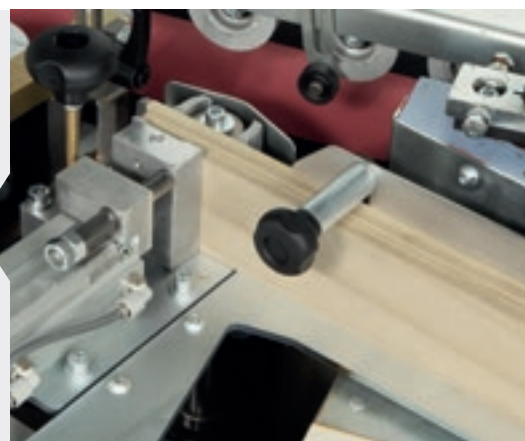
- automatic lowering of the glue temperature after a temporary halt in production when using the machine
- rapid glue pot substitution and double thermoregulation system for the use of 2 types of glue (opt.)



Quick locking system for glue pot change

KIT FOR MACHINING OF EDGES IN STRIPS

Automatic loading of edges in strips with thickness 0,4-5 mm (opt.)



K-1 END CUTTING GROUP:

ALWAYS GIVES THE BEST CUTTING QUALITY

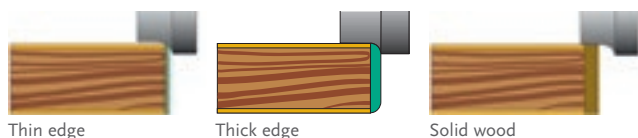
The best finishing quality in all edge banding operations utilising motors sliding on vibration free hardened, ground steel round bars and with the two blades with independent copying devices.



olimpic k100

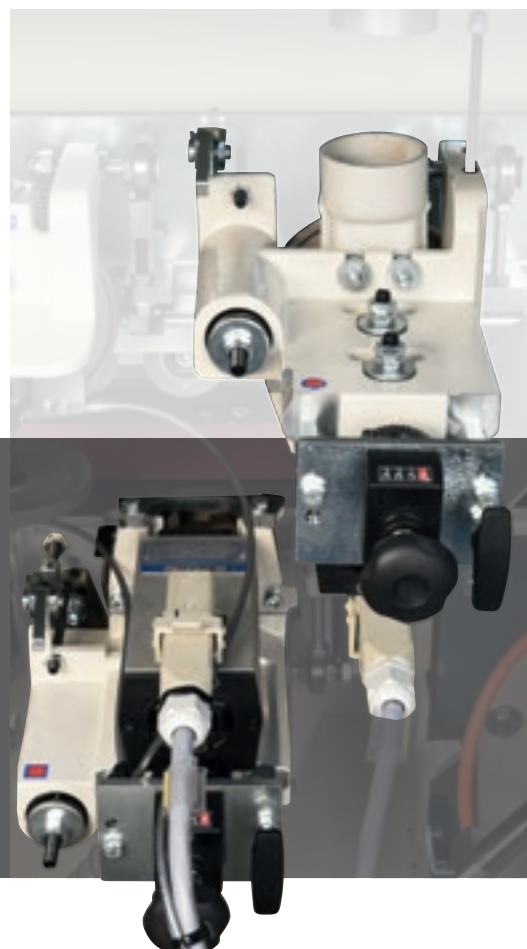
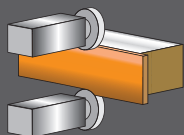
operating groups

“COMBI” TOOL



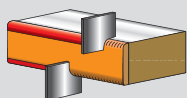
R-M TRIMMING GROUPS: 3 DIFFERENT MACHINING

Rapid machining changeover between thin, thick and solid wood edges due to the 3 manually selectable working positions and the “Combi” tool supplied as a standard feature.



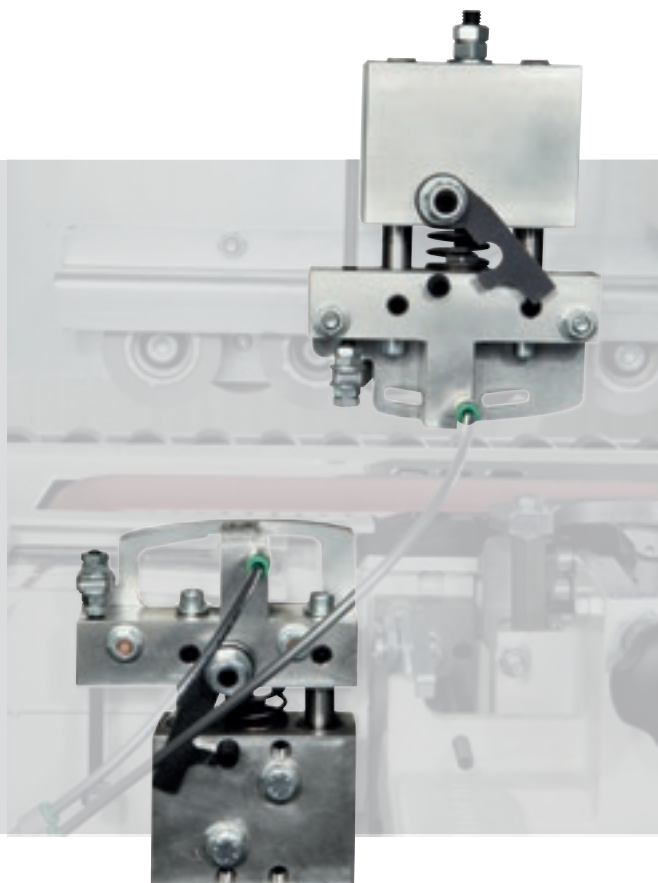
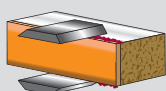
RAS-M EDGE SCRAPING UNIT: FOR PERFECT RADIUS EDGES ON PLASTIC MATERIALS

High finishing quality of plastic material edges due to the radius knives that ensures the complete **elimination of any marks** left from the trimming group tools (opt.).



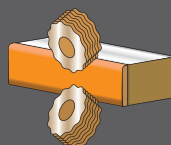
RC-M GLUE SCRAPING GROUP: CLEAN PANELS AND A PERFECT EDGE JOINT LINE

It eliminates any excess glue on the
panel/edge joint (opt.).



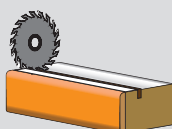
BRUSHING UNIT

Cleaning and polishing of the panel
edge (opt.).



"T-M" SPINDLE MOULDER UNIT

It carries out through grooves on the
upper panel side.

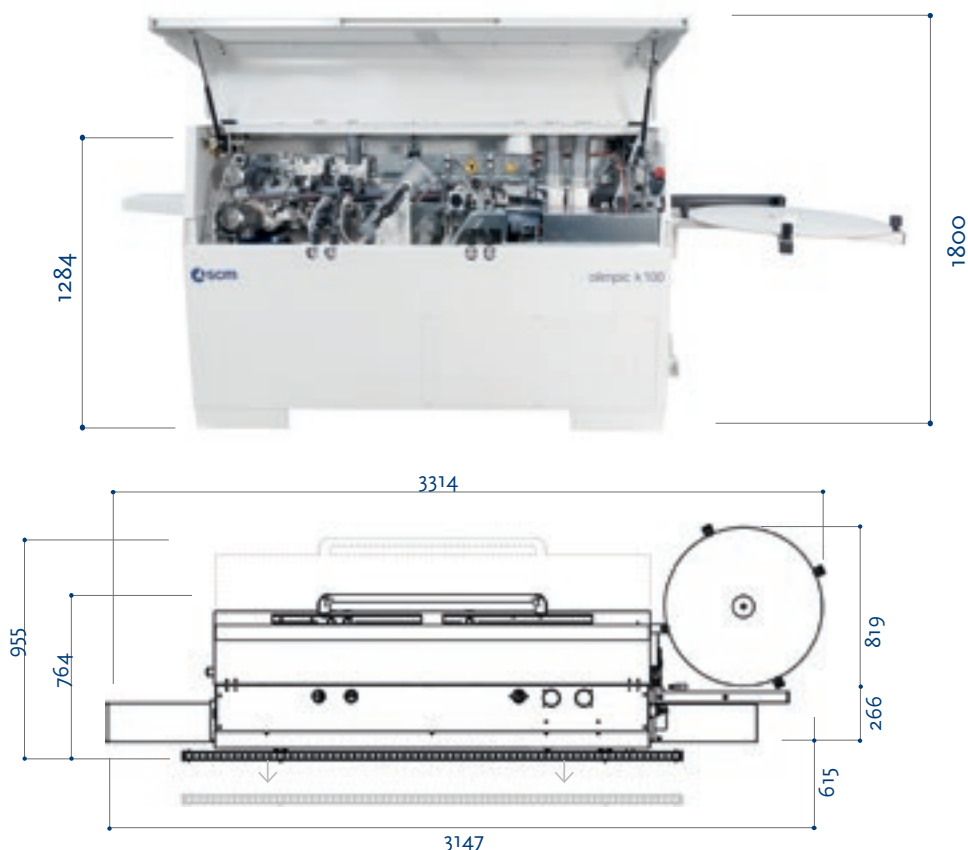


olimpic k100

technical data and configurations

OLIMPIC K100

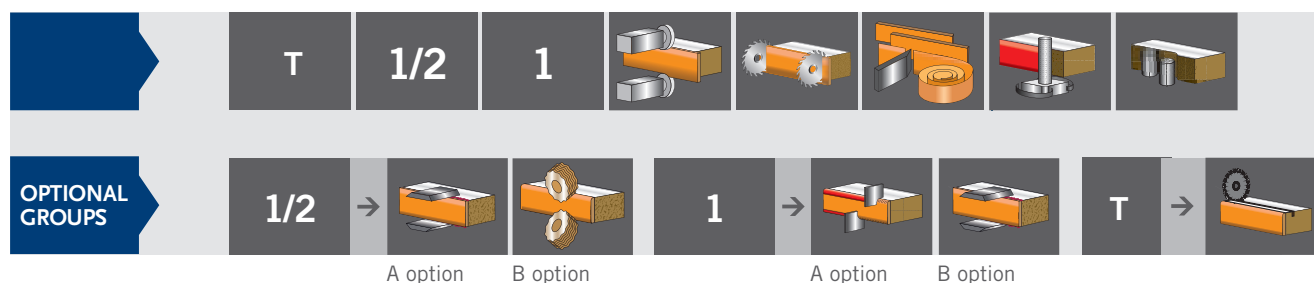
dimensions



Maximum noise levels measured according to the operating conditions established by EN ISO 18217:2015. Acoustic pressure in process 80 dbA (measured according to EN ISO 11202, uncertainty K = 2.5 dB). Acoustic power in process 99 dbA (measured according to EN ISO 3744, uncertainty K = 2 dB). Even if there is a correlation between above mentioned "conventional" noise emission values and average levels of personal exposure over eight hours of operators, these last also depend on the real operating conditions, duration of exposure, acoustic conditions of the working environment and presence of further noise sources, this means the number of machines and other adjacent processes.

OLIMPIC K100

available solutions



LOWER CONSUMPTION = LOWER COSTS

SavEnergy allows **the use of power only when it is required**, making things operate only when they are really necessary. It means the machine automatically enters "stand-by" mode when there are no panels to be machined at any particular time (opt.)

THE STRONGEST WOOD TECHNOLOGIES ARE IN OUR DNA

SCM. A HERITAGE OF SKILLS IN A UNIQUE BRAND

Over 65 years of success gives SCM the centre stage in woodworking technology. This heritage results from bringing together the best know-how in machining and systems for wood-based manufacturing. SCM is present all over the world, brought to you by the widest distribution network in the industry.

65 years history

3 main production sites in Italy

300.000 square metres of production space

17.000 machines manufactured per year

90% export

20 foreign branches

350 agents and dealers

500 support technicians

500 registered patents

In SCM's DNA also strength and solidity of a great Group. The SCM Group is a world leader, manufacturing industrial equipment and components for machining the widest range of materials.

SCM GROUP, A HIGHLY SKILLED TEAM EXPERT IN INDUSTRIAL MACHINES AND COMPONENTS

INDUSTRIAL MACHINERY

Stand-alone machines, integrated systems and services dedicated to processing a wide range of materials.



WOODWORKING TECHNOLOGIES



TECHNOLOGIES FOR PROCESSING
COMPOSITE MATERIALS, ALUMINIUM,
PLASTIC, GLASS, STONE, METAL

INDUSTRIAL COMPONENTS

Technological components for the Group's machines and systems, for those of third-parties and the machinery industry.



SPINDLES AND
TECHNOLOGICAL COMPONENTS



ELECTRIC PANELS



METALWORK



CAST IRON



The technical data can vary according to the requested machine composition. In this catalogue, machines are shown with options. The company reserves the right to modify technical specifications without prior notice; the modifications do not influence the safety foreseen by the CE Norms.



is more



SCM GROUP SPA

via Casale 450 - 47826 Villa Verucchio, Rimini - Italy
tel. +39 0541 6741111 - fax +39 0541 674274
scm@scmgroup.com
www.scmwood.com



00L0365569L