

***ECONOMICAL AND  
FOREST-FRIENDLY***

**WISENT**

**PONSSE**





PONSSE WISENT

# ***AN ECONOMIC PROFESSIONAL AT THINNING SITES***

PONSSE Wisent is gentle on thinning sites. Its agility and excellent visibility in all directions from the cabin reduce damage to standing trees. Being lightweight, it also reduces damage to the terrain while logging. It still offers an excellent load-carrying capacity and power that never runs out. Wisent is a small-sized machine with large properties, and with low emissions and costs.





# PONSSE WISENT

Thanks to its excellent weight distribution and geometry, PONSSE Wisent leaves minimal impact on the terrain and makes driving easy, even in dense and curvy thinning trails. Its rear wheels closely follow its front wheels. With the accuracy of the Wisent, operators can easily avoid damaging trees. All of this combined with the best ergonomics in the world and a modern engine, ensure that the operator can increase efficiency and reduce fuel consumption.

## CABIN AND CONTROL SYSTEM

The most spacious and comfortable cabin and the most ergonomic controls guarantee the best working comfort. PONSSE Opti information system is an advanced and easy-to-use interface for machine and work management.

## ENGINE AND HYDRAULICS

The Wisent is a powerful machine. The consistent power of the Mercedes-Benz / MTU engine is available over a broad rpm range. Its fast response to the throttle, steady torque and strong hydraulics make the machine easy to use.

## FRAME STRUCTURES AND FRAME OSCILLATION LOCK

The design of the Wisent frame focuses particularly on durability and ease of maintenance. In addition to reliability, the functional positioning and serviceability of components are typical characteristics of the structure.

## LONG BOGIE

A long bogie, a bogie option designed for harvesting in soft conditions, reduces the ground pressure of the machine significantly compared to a standard bogie when using tracks.



## POWER AND PRECISION

Wisent's strong hydraulics and precise feel, makes loading easy and reliable. The maximum reach of the loader extend all the way to 10 metres.

## ACTIVE CRANE

PONSSE Active Crane offers a new way of controlling the loader and boosting efficiency. It is a loader control system which the operator uses to control the grapple movement instead of individual functions, allowing the operator to concentrate efficiently on loader work. Active Crane is easily controlled using two levers, one of which controls the grapple height from the ground and the other controls the direction of movement. What is essential is that the operator does not need to control all the functions simultaneously. Once the appropriate grapple location has been given to the machine, it will perform the lift and use the boom and extension automatically. The operator can easily switch between Active Crane and conventional loader control with a push of a button. Active Crane is based on Ponsse's unique Sensor Module technology, which is used in the PONSSE Scorpion leveling system and the PONSSE Active Frame suspension system. This provides the Active Crane with easy maintenance and reliability.



## CABIN

# WORKPLACE WITH A VIEW

The Wisent has no obstacles to productivity in sight.

The PONSSE Wisent cabin is your vantage point to the latest in forest machine technology. It is a work environment for professionals who value comfort, safety and ergonomics.

The control devices are the best you will find in forest machines in terms of their ergonomics. The large cabin, expansive windows and thin window pillars ensure excellent visibility in all directions.

Optionally the cabin can also be equipped with the best forest machine seat in the world, PONSSE Seat.

## PONSSE SEAT\*

# UNBEATABLE COMFORT

THE ONLY SEAT ON THE MARKET SPECIALLY DESIGNED FOR FOREST MACHINE DRIVERS.

### COMFORT ABOVE ALL ELSE.

The breathable fabric and ergonomic seat supports, guarantee improved working comfort.

### DURABLE AND EASILY MAINTAINABLE FABRIC.

Seat fabric is especially durable and the dirt repellent surface makes cleaning effortless.



### DURABLE AND STABLE BASE.

A strong base provides the seat with superior reliability and stability. Thanks to the suspension specifically designed for forest machines, the PONSSE Seat decreases effectively swinging and impacts towards the operator.

### EASY ACCESS TO SEAT CONTROLS AND BASE.

All adjustment controls are conveniently located at the front of the seat cushion. The removable cushion gives easy access to the seat base for maintenance.

\* PONSSE Seat is available as option to all PONSSE machines.





**ACTIVE  
CARE**

#### **LESS SERVICE, MORE OPERATION**

The technology and hydraulics offer longer service intervals, increasing effective operating hours and reducing operating costs. Easy access to important components speeds up maintenance. In all PONSSE models special attention has been put into the positioning of components and service points, as well as the ease of maintenance, as requested by our customers.

#### **ENSURE MAXIMUM PRODUCTIVITY PONSSE**

Active Care service agreements offer the best possible service for forest machine entrepreneurs. You can focus on your logging, while Ponsse will make sure that the machine will maintain its performance and productivity from one logging site to the next. With the PONSSE Active Care service agreement, you can outsource the scheduled maintenance of your forest machine to Ponsse. Machines are maintained regularly by our professionals using only high-quality and original PONSSE parts, lubricants and filters to keep the machines in good operating condition to retain its value.

## **MERCEDES-BENZ ENGINES**

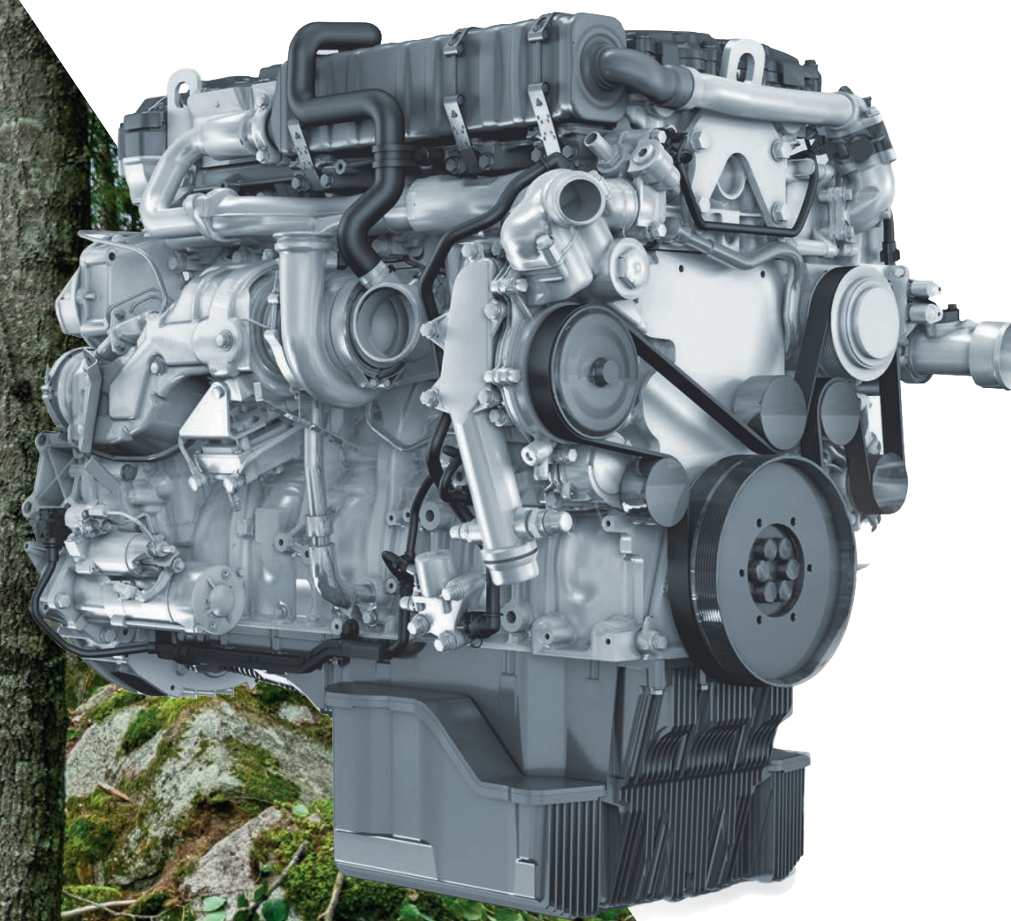
# ***CLEANER AND MORE EFFICIENT***

**Explosive power and increased torque. Lower emission level and fuel consumption.**

The new Mercedes-Benz/MTU STAGE V emission engines are efficient and economical. The torque has been increased, and maximum torque can be reached at lower engine speeds.

The Mercedes-Benz/MTU STAGE V emission engines are modern, emission engines with significantly lower particulate matter (PM) and nitrogen oxide (NOx) emissions compared to engines of the previous emission levels (STAGE III and IV). In addition to particulate matter, the STAGE V engines also now control particulate volume with a particulate filter (DPF).

*Outside Europe an EU Stage V/Tier 4F or Stage IIIA level Mercedes-Benz engines are used depending on market specific emission requirements.*





Our goal is to manufacture the most productive and economical forest machines on the market. We call this the **PONSSE Boost/Save** operating model.

At Ponsse, we have always put the customers first.

For decades now, we have been developing the world's best cut-to-length forest machines as well as related services and information systems. The users of the machines are the best specialists in their field, and we closely listen to their feedback. Together, we have managed to continue increasing the productivity and efficiency of harvesting and reduce the costs. This has been the result of long-term collaboration. However, we want to serve our customers even better.

Boost/Save means even more efficient products and better services for our customers. It means efficient and productive machines, agile product development, thorough training, comprehensive maintenance, original spare parts and the most modern information systems in the field.

Boost/Save means efficient and productive harvesting!

## PONSSE BOOST/SAVE ***POWER AND SAVINGS***



## PONSSE MANAGER ***REAL-TIME MANAGEMENT***

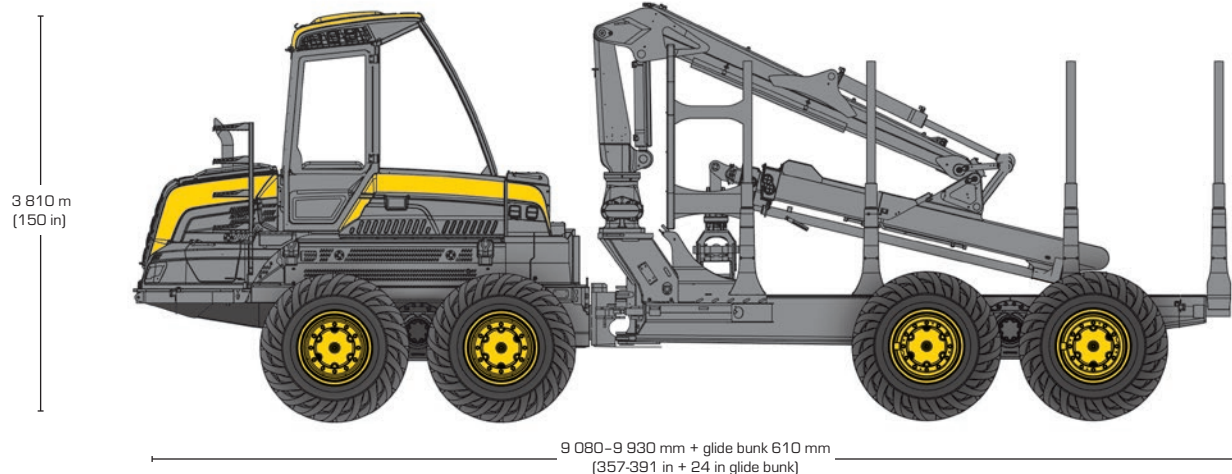
**PONSSE Manager connects forest machines to an information network.**

PONSSE Manager, the modern digitalization platform for forest machines, enables comprehensive services now and in the future. The easy-to-use tool offers assistance in harvesting equipment maintenance and work planning, along with providing access to functional and extensive reporting.

PONSSE Manager provides real-time information on equipment performance and work site status. The solution can be easily used via a smartphone, tablet or computer.



# PONSSE WISENT



## DIMENSIONS

Minimum weight:	16 300 kg (35,935 lbs)
Typical weight:	17 300 kg (38,139 lbs)
Length:	9 080–9 930 mm + glide bunk 610 mm (357–391 in + glide bunk 24 in)
Width:	2 690–2 840 mm (106–112 in)
Transportation height:	3 810 mm (150 in)
Ground clearance:	645 mm (25 in)
Steering angle:	± 44°
Outer turning radius:	7,5 m (25 ft)

## LOADER

### K70+

Lifting moment (gross):	106 kNm (78.1 lb-ft)
Reach:	M: 10 m (33 ft)

## TIRES

Front and rear:	26.5"
-----------------	-------

## GRAPPLE

Model:	Several different grapple alternatives
--------	--

## ENGINE

Model:	MB OM 934 LA EU Stage V MB OM 934 LA EU Stage V/Tier 4F MB OM 924 LA Stage IIIA
Power:	EU Stage V & EU Stage V/Tier 4F: 150 kW (204 hp) Stage IIIA: 145 kW (197 hp)
Torque:	1 200–1 600 rpm (EU Stage V & EU Stage V/Tier 4F: 850 Nm, Stage IIIA: 705 Nm)
Tractive force:	165 kN (37,093 lbf)
Driving speed:	0–20 km/h (0–12 mph)
Fuel tank volume:	150 l (40 gal US)

## HYDRAULIC SYSTEM

Control system:	PONSSE Opticontrol
Working pump:	145 cm³ (8.8 cu in)
Oil tank volume:	130 l (34.3 gal US)

## LOAD SPACE

Load carrying capacity:	12 000 kg (26,455 lbs)
Load space cross-section:	4,0–4,5 m² (43–48 sq ft)
Load space length:	4 190–5 040 mm + glide bunk 610 mm (165–198 in + glide bunk 24 in)

In addition to the comprehensive standard equipment, plenty of optional equipment is available for the PONSSE Wisent. Consult your nearest PONSSE retailer for more information on our standard and optional equipment.



### Ponsse Plc.

Ponssentie 22  
74200 Vieremä  
FINLAND  
Tel.: +358 20 768 800  
Fax: +358 20 768 8690  
www.ponsse.com

### Ponsse UK Ltd.

4 Annan Business Park  
Annan  
Dumfriesshire  
DG12 6TZ  
UNITED KINGDOM  
Tel. + 44 1461 207 510

### Ponsse Machines Ireland Ltd

Cappakeel, Emo  
Portlaoise  
R32NN28  
Laois  
IRELAND  
Tel. +353 57 863 3762

### Ponsse North America, Inc.

4400 International Lane  
Rhineland, WI 54501  
USA  
Tel. +1 715 369 4833  
Fax +1 715 369 4838



**A logger's best friend**  
[www.ponsse.com](http://www.ponsse.com)