

JOHNSON FORMING EQUIPMENT

(REF. JOHNSON QUOTE #Q87001)
OPTION #1FORMING EQUIPMENT TO CONSIST OF:

- (1) MODEL FB38 FORMING BOARD WITH THREE BLADES ON 8" CENTERS.
COMPLETE WITH: MOUNTINGS TO BELOIT BREAST ROLL REMOVER ARMS.
(1) SET OF (3) POLYETHYLENE FORMING BOARD BLADES WITH (1) 1.0" X 7.0" X 180" AND (2) 1.0" X 3.0" X 180".
(1) SET OF (3) DURA FORMING BOARD BLADES WITH CERAMIC OUTSERT EDGE.

- (3) MODEL ISF930W ISOFLU UNITS WITH (9) BLADES ON 3" CENTERS.
COMPLETE WITH: MOUNTINGS TO BELOIT FOURDRINIER T-SLOTS.

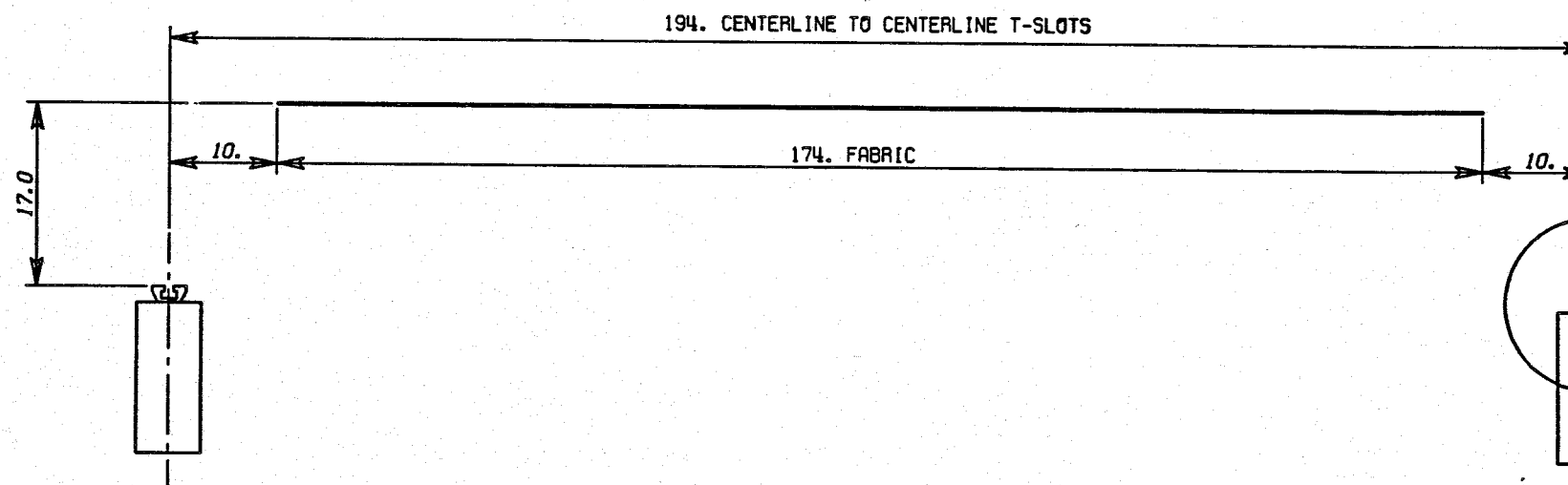
(3) MODEL ISF930 POLYETHYLENE ISOFLU COVERS WITH
(3) ORTHOFLO BLADES, (6) SPECIAL ISOFLU BLADES AND
(16) ADJUSTABLE DECKLES.

(3) MODEL ISF930 DURAMIC ISOFLU COVERS WITH
(3) DURAMIC ORTHOFLO BLADES, (6) SPECIAL
ISOFLU BLADES AND (16) ADJUSTABLE DECKLES.

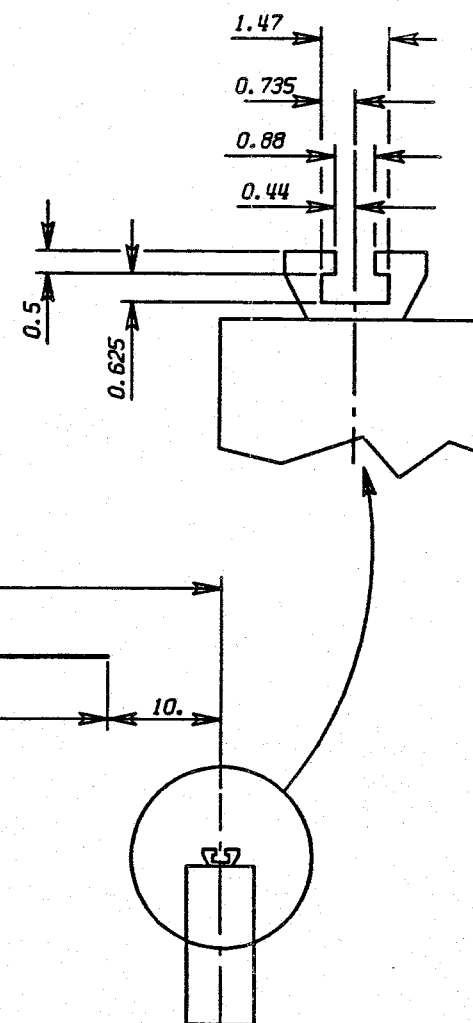
- (1) MODEL OF930W ORTHOFLO LOW VACUUM UNIT WITH (9) T-BARS ON 3" CENTERS.
COMPLETE WITH: MOUNTINGS TO BELOIT FOURDRINIER T-SLOTS.

(1) MODEL OF930 POLYETHYLENE ORTHOFLO COVER WITH
(9) BLADES (1.0" X 1.25" X 180") AND (16) ADJUSTABLE DECKLES.

(1) MODEL OF930 DURAMIC ORTHOFLO COVER WITH
(9) CERAMIC BLADES (1.7" X 1.5" X 180") AND (16) ADJUSTABLE DECKLES.

VACUUM BLOWER SYSTEM TO CONSIST OF:

- (1) MODEL TBA-24-15 HAUCK BLOWER CAPABLE OF EXTRACTING 1550 CFM @ 38" WATER COLUMN. (1) 15 HP 460 VOLT 60HZ TEFC MOTOR AT 3600 RPM.
(4) AUTOVAC 2 VACUUM CONTROLLERS.
(4) AIR/WATER SEPARATORS. (SEPARATOR MTGS. BY PURCHASER.)
(1) MODEL M600 (6) TUBE MANOMETER PANEL BOARD.
(1) VACUUM HEADER (10" DIA. X 10.').
AND NECESSARY VACUUM PIPING FROM FORMING EQUIPMENT TO SEPARATORS.



THIS PRINT IS THE PROPERTY OF BELOIT CORPORATION. THE INFORMATION THEREON IS SUBMITTED IN CONFIDENCE.

REVISION	PROCESS APPROVAL	ORDER NO. 85000	CUSTOMER NAME S.D. WARREN CO.		MACH. NO. 4	SHEET OF	REFERENCE DRAWING LC-1366-2-14-0	IDENTIFICATION NUMBER 248449D010	
		FILE NO.	MILL MUSKEGON, MICH.						
		DEPT. NO. 614	CHK'D. LAS	APP'D. 1 JMP					APP'D. 2 JMP
		DATE 6-4-87	TITLE JOHNSON FORMING EQUIPMENT						