

**Vetus EQ**  
Equine Ultrasound Image System

**Efficiency & Quality**



Q | Search Mindray Animal Medical

[www.mindrayanimal.com](http://www.mindrayanimal.com)  
[service@mindrayanimal.com](mailto:service@mindrayanimal.com)

P/N:ENG-Vetus EQ-210285X8P-20220913  
©2022 Shenzhen Mindray Animal Medical Technology Co., LTD. All rights reserved.



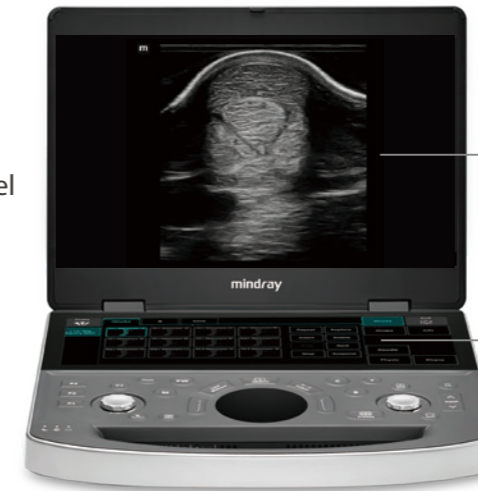
## Concise & Practical

### Innovative Design

- Intuitive touch interface
- Sealed touchpad
- Seamless design control panel

### Sturdy Construction

- Touchpad design prevent animal hairs
- Resist corrosion from harsh cleaning agents



15.6-inch high revolution color LED monitor, narrow border, wide view

12.3-inch high sensitivity anti-glare color touch screen

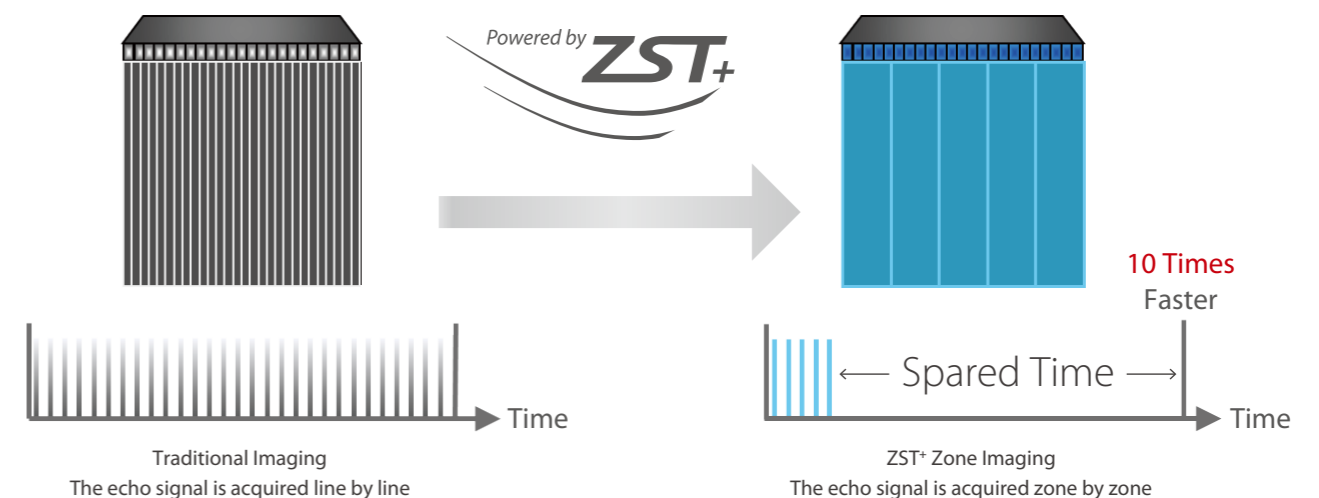


**3** Kg main unit    **44** mm thickness

Ultra **thin**    Ultra **light**

## Advanced ZST+ Imaging Platform

ZST+ has three core technologies: Zone Imaging, Zone Focusing, and Zone Processing, which greatly improved the imaging level of an ultrasound system in all directions, help equine practitioners see more precisely, comprehensively and quickly.



Mindray Animal Medical has been developing innovative and diversified ultrasound veterinary solutions since its inception. For years, Mindray Animal Medical always strives to be supportive of healthcare of varied species, including companion animals, rare animals, farm animals and any other ones.

Vetus EQ is a portable and practical color doppler ultrasound system customized for the equine diagnosis. Based on the revolutionary technology of ZST+ platform, Vetus EQ provides the professional solutions for ultrasonic examination of horses.

# Dedicated Equine Applications



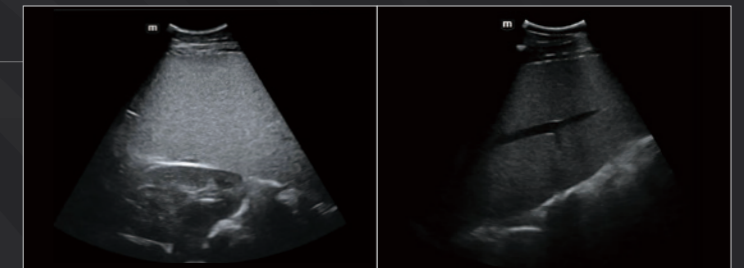
## iWorks dedicated procedure

Standard and simplified the workflow dedicated for equine application reduce 50% exam time, 80% keystrokes

## Abdomen Application



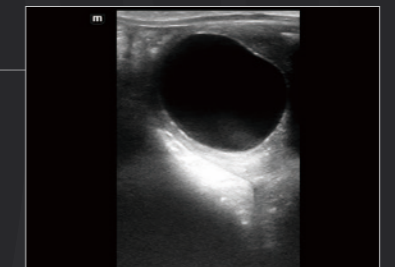
C5-1s  
Convex array transducer for equine abdominal scanning in big animals



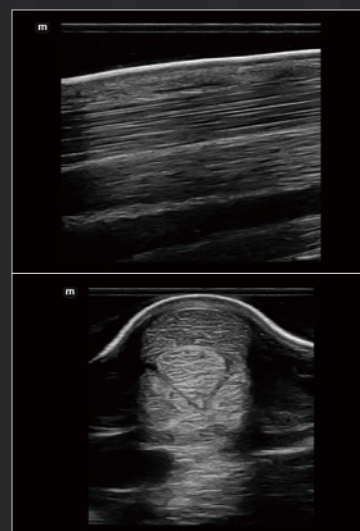
## Reproduction Application



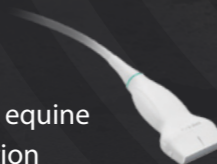
6LE5Vs  
Intrarectal linear array transducer



## MSK Application



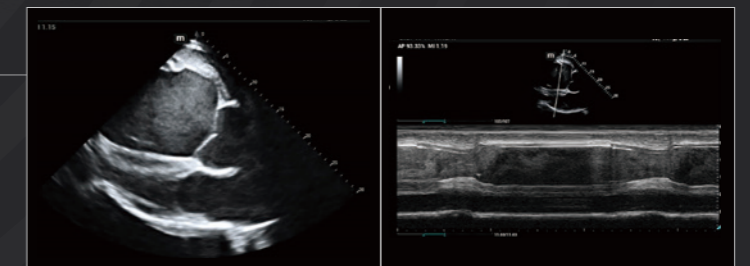
L13-3Ns  
Wide frequency range linear, for equine tendon application



## Cardiology Application



P4-2s  
Excellent penetration phased array for equine cardiology application



# Portable & Durable

## iCover—Protective Cover Set

Prevent dust, dirt and splash, anti accidental fall, pump and smash.



## U-bank

Main unit supports up to 8 hours of continuous scanning with U-bank.



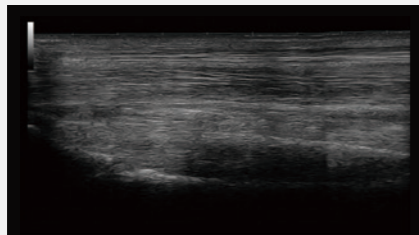
## Easy Backpack

Suitable and sturdy backpack for easy carriage especially in outside work conditions. Dedicated design of inner pockets for transducers, adapter modules, coupling gels and other tools.



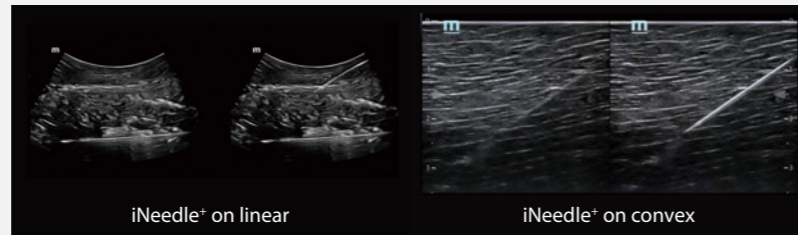
# Dedicated & Professional

## Tendon Application



**iScape**

iScape provides wide-view image to help measure the equine tendon length and evaluate its status.



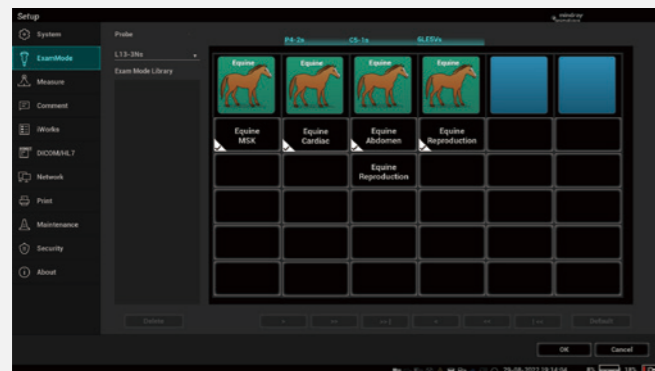
iNeedle+ on linear

iNeedle+ on convex

**iNeedle+**

iNeedle+ provide the equine practitioner with an easy tool for the operations: injection, aspiration, or biopsy.

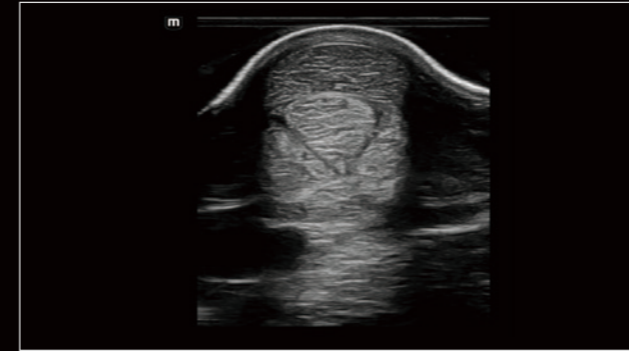
## Specific and Professional Presets



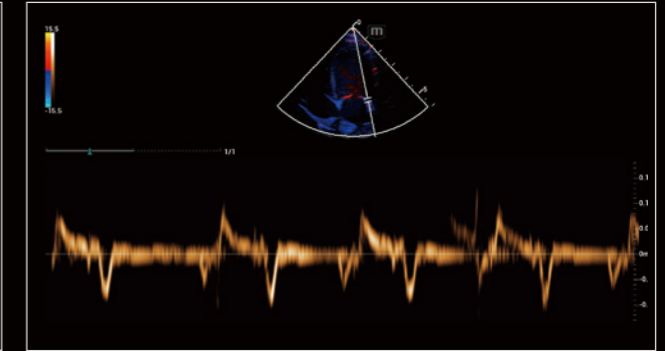
Focused on the equine ultrasound diagnosis demand, Vetus EQ developed a series of professional preset for different application scenarios:

- Equine MSK
- Equine Cardiac
- Equine Abdomen
- Equine Reproduction

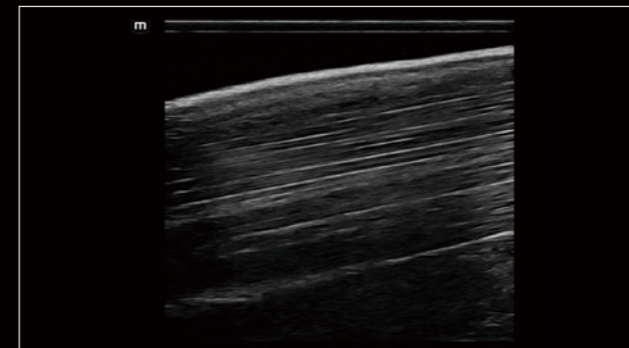
All above increase the efficiency and quality of equine practitioners' work.



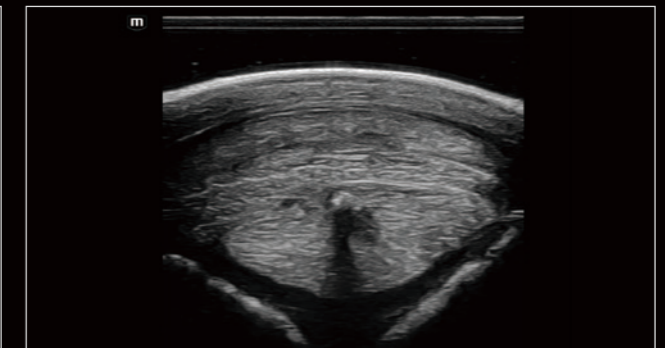
Equine Tendon



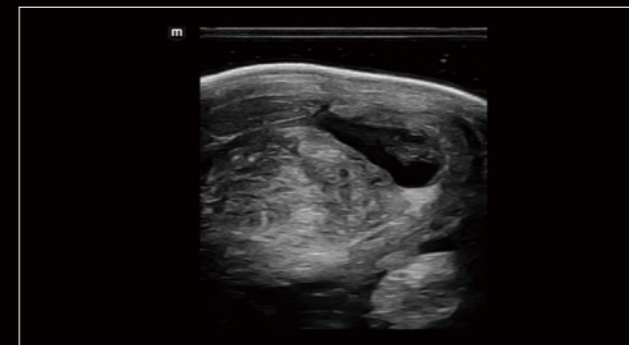
Equine Cardiac TVD



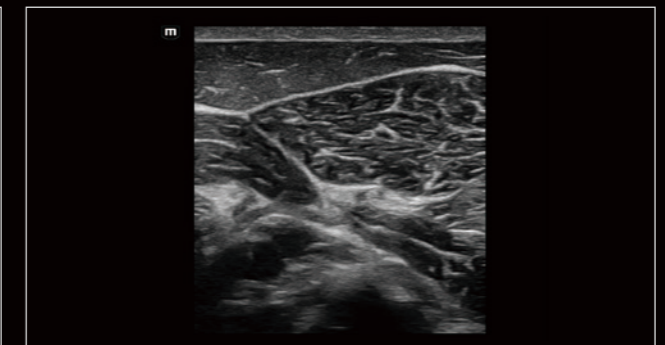
Equine Proximal Metacarpal Region



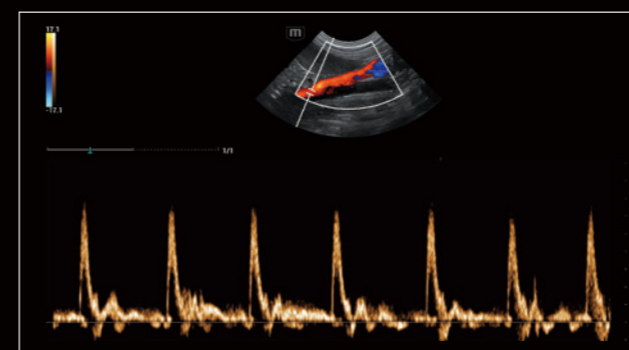
Tendon Calcification



Equine Tendon Hydrops



Equine Lumbar Muscle



Equine Abdominal Aorta Flow



Equine Spine