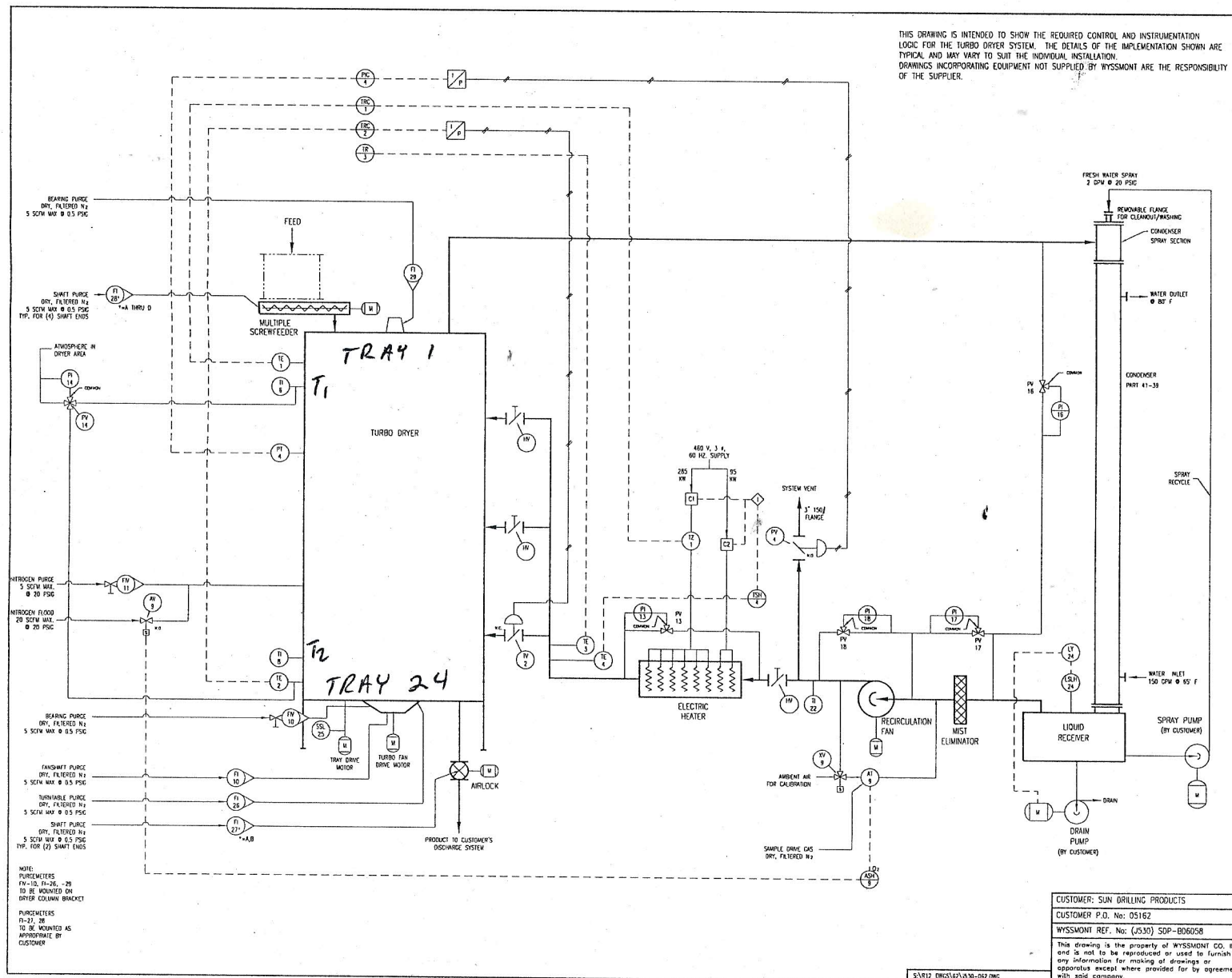


THIS DRAWING IS INTENDED TO SHOW THE REQUIRED CONTROL AND INSTRUMENTATION LOGIC FOR THE TURBO DRYER SYSTEM. THE DETAILS OF THE IMPLEMENTATION SHOWN ARE TYPICAL AND MAY VARY TO SUIT THE INDIVIDUAL INSTALLATION. DRAWINGS INCORPORATING EQUIPMENT NOT SUPPLIED BY WYSSMONT ARE THE RESPONSIBILITY OF THE SUPPLIER.



PT.	DESCRIPTION	QTY.	SYMBOL	REMARKS
1	PURGE/MEASUREMENT VALVE	1	PM-10	60-600 SCFH
2	DRIFT GAUGE	1	PI-14	1/2" 10-30 PSI 1/2" NPT CONNECTIONS
3	SELECTOR VALVE	5	PI-15, 16, 17, 18	1/4" NPT CONNECTIONS
5	DAMPERS ACTUATOR	1	IV-2	3 - 15 PSIG SUPPLY
6	TEMPERATURE RECORDING CONTROLLER	1	MC-1, 2, 3	
6B	THERMOCOUPLE TYPE J	3	TC-1, 2, 3	
7	1/2" TRANSDUCER	2		
8	TEMPERATURE LIMIT SWITCH	1	TSI-4	HIGH LIMIT
8B	THERMOCOUPLE TYPE J	1	TC-4	
10	PRESSURE INDICATING CONTROLLER	1	PIC-4	-0.25" TO +0.25" H.C.
10I	PRESSURE TRANSDUCER	1	PT-4	-0.25" TO +0.25" H.C.
11	VENT VALVE	1	PV-4	
	HEATER CONTACTOR	2	C1, C2	BY CUSTOMER
16	SCR CONTROLLER	1	IZ-1	
17	OXYGEN ANALYZER	1	ASH-9	0-21%
17T	OXYGEN TRANSMITTER	1	AT-9	0-21%
17T	OXYGEN TRANSMITTER CALIBRATION VALVE	1	CV-9	
18	INERT FLOOD VALVE	1	IV-9	
19	INERT GAS PURGE/MEASUREMENT VALVE	1	PM-11	60-600 SCFH
20	DIFFERENTIAL PRESSURE GAUGE	1	PI-13	
21	DIFFERENTIAL PRESSURE GAUGE	1	PI-16	
22	DIFFERENTIAL PRESSURE GAUGE	1	PI-17	
23	DIFFERENTIAL PRESSURE GAUGE	1	PI-18	
25	DUAL THERMOMETER	2	TM-6, 8	
26	DUAL THERMOMETER	1	TM-22	
31	PURGE/MEASUREMENT VALVE	9	PM-10, -20, -26, -27	
32	AIRLOCK SHAFT PURGE/MEASUREMENT VALVE	2	PI-22A, B	
34	LIQUID LEVEL SWITCH	1	LSLH-24	BY CUSTOMER
35	LIQUID LEVEL CONTROL RELAY	1	LY-24	BY CUSTOMER
21-30	TRAY DRIVE UNDER-SPEED SWITCH	1	SSL-25	

ABBREVIATIONS BY WYSSMONT UNLESS OTHERWISE NOTED.
 ALL INTERCONNECTING WIRING AND PIPING SUPPLIED AND INSTALLED BY CUSTOMER UNLESS OTHERWISE NOTED.
 ALL OUTBOARD TAPS ARE 1/2" NPT (COUPLING) UNLESS NOTED.

— PROCESS CONNECTION
 — PNEUMATIC SIGNAL
 - - - ELECTRICAL SIGNAL

○ LOCALLY MOUNTED DEVICE
 ⊖ PANEL MOUNTED DEVICE
 ⊖ ⊖ DEVICE MOUNTED INSIDE PANEL

CUSTOMER: SUN DRILLING PRODUCTS
 CUSTOMER P.O. No: 05162
 WYSSMONT REF. No: (J530) SDP-B06058
 This drawing is the property of WYSSMONT CO. INC. and is not to be reproduced or used to furnish any information for making of drawings or apparatus except where provided for by agreement with said company.

REV.	BY	DATE	DESCRIPTION	APPV'D.
1	VC	1-15-01	NITROGEN PRESSURE FOR FLOOD SUPPLY CORRECTED, HEATER CONTACTORS BY CUSTOMER, HEATER WATGAGE INDICATOR, SYNDEX ANALYZER EQUIPMENTS INSTALLED.	
TURBO DRYER INSTRUMENTATION AND CONTROL				
WYSSMONT™ COMPANY, Inc.				
FORT LEE, NEW JERSEY				
SCALE: NONE	REV.	DRAWN BY: VC 11/06		
DWG. NO. J530-062	A	CHECKED BY:		
		APPV'D. BY:		

S:\N12_0MG51\02\J530-062.DWG