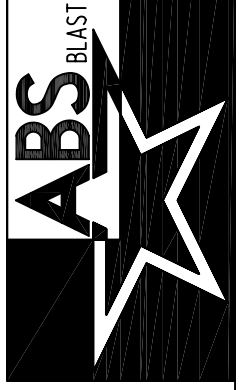
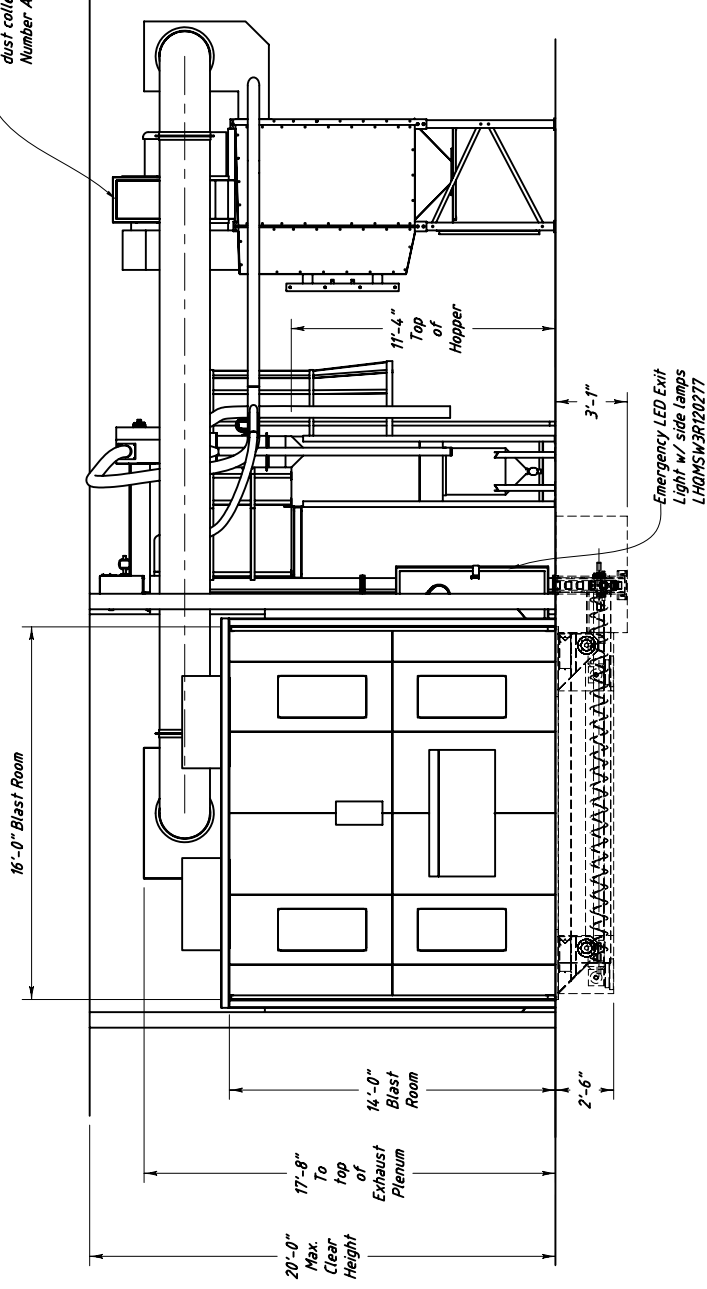


Plan View

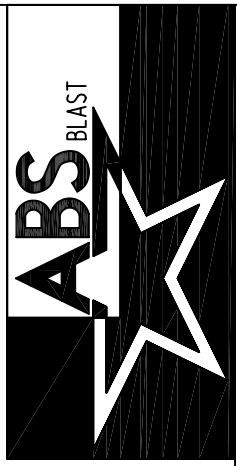
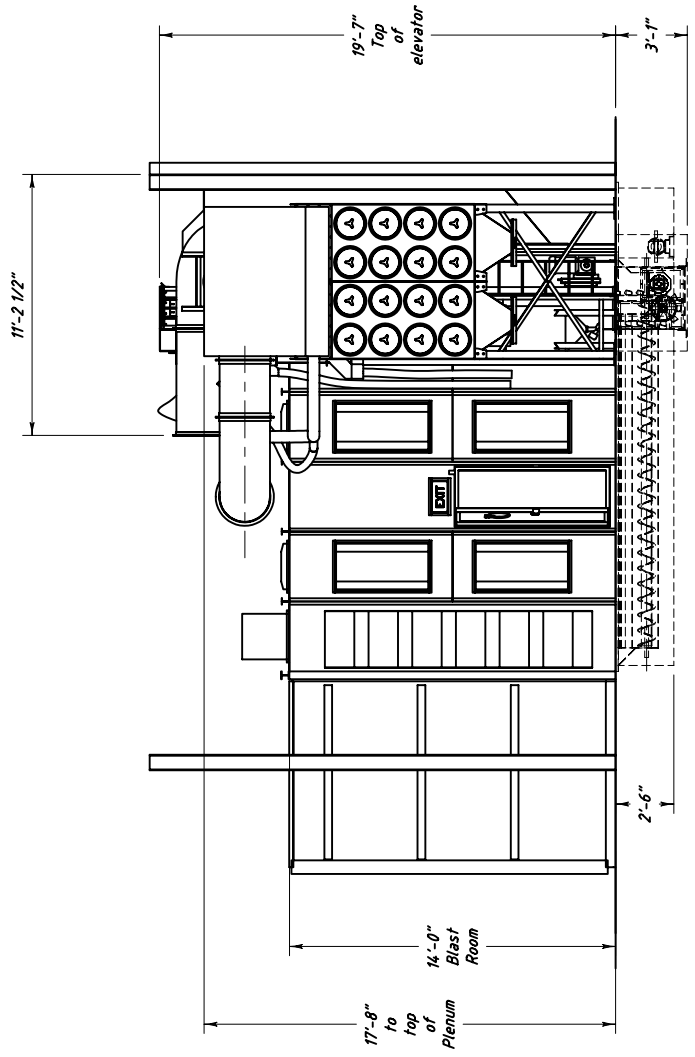
Alfa Laval 0814

13,940 CFM cartridge
dust collector, Model
Number ADFT 4-32



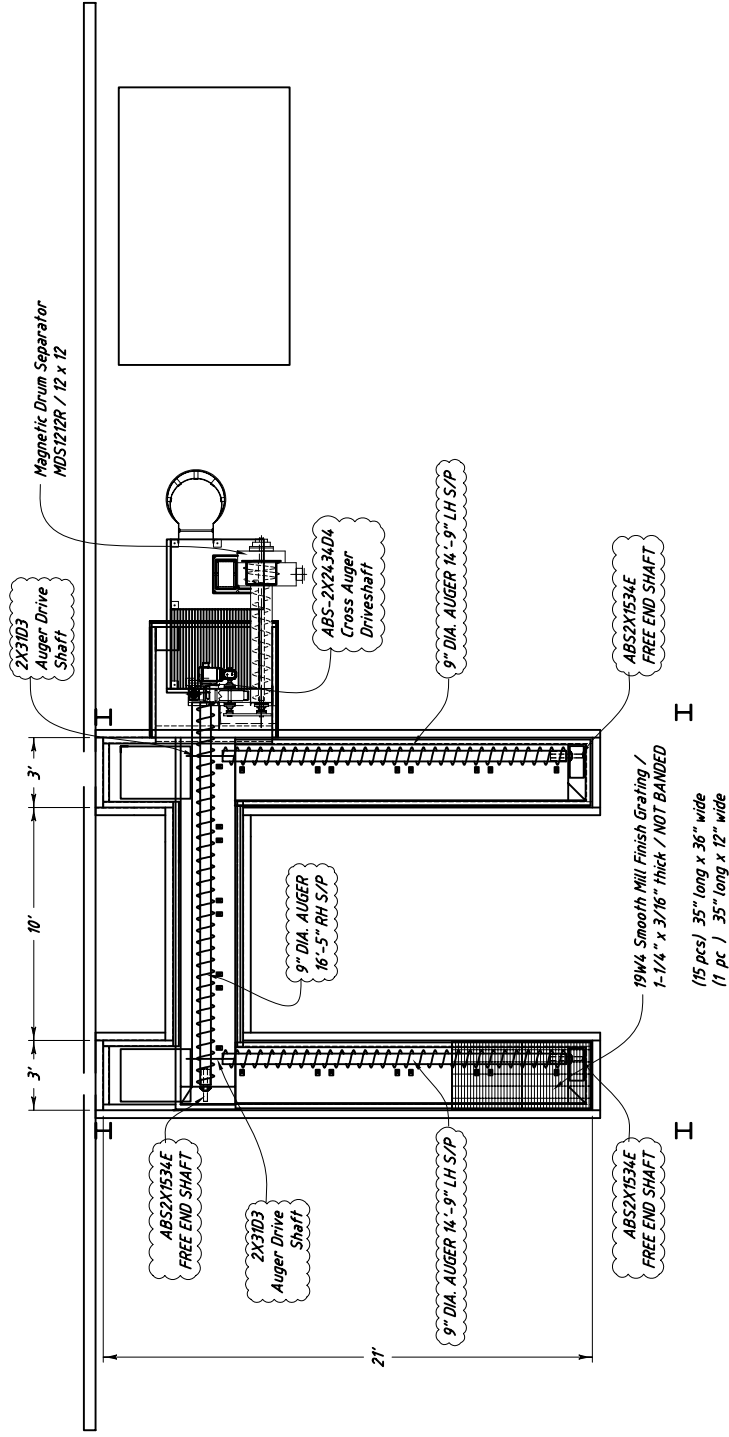
Front View

Alfa Laval 0814



Alfa Laval 0814

Side View



Alfa Laval 0814

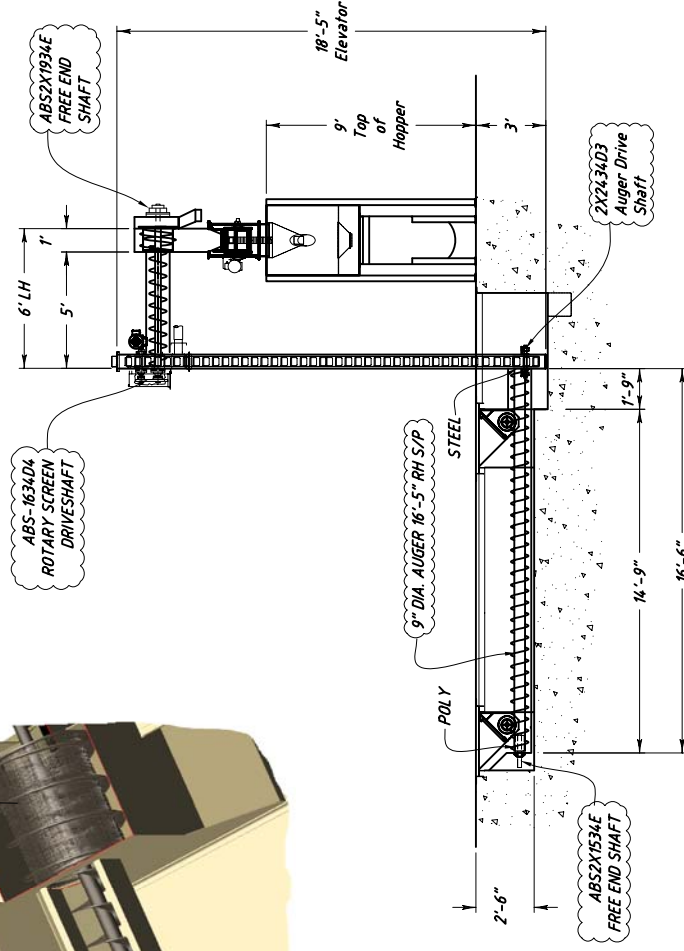
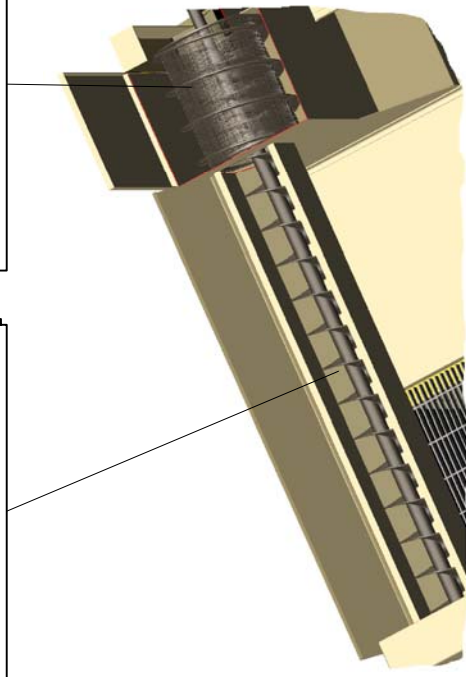
Auger/Shaft Specification

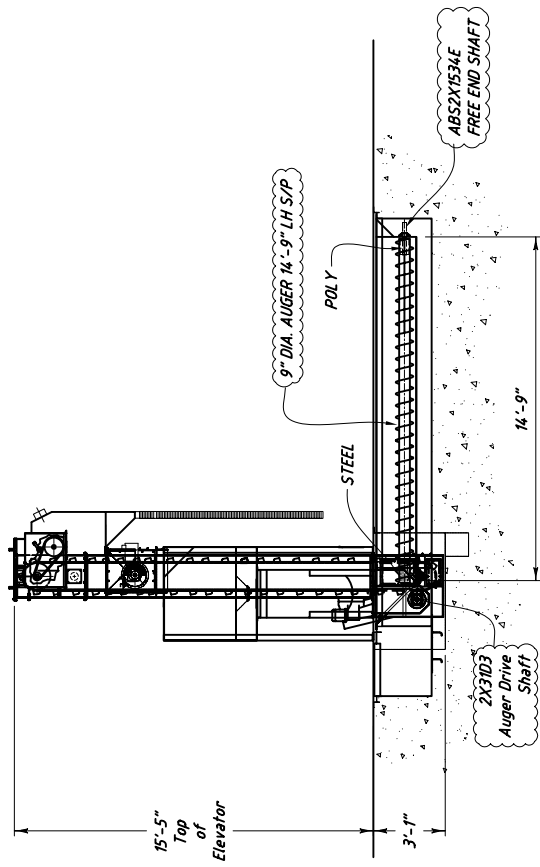
Separator Screw

9" and 15" dia. x 6 ft 0 in long LEFT Hand sectional screw starting at inlet end with 5 ft 2 in of 9" od x 6" pitch flights then balance (10") of 15" od x 5" pitch flights

Rotary Screen

15-1/2" ID x 1'-0" long perforated drum LEFT Hand NEW ABS DESIGN (06)

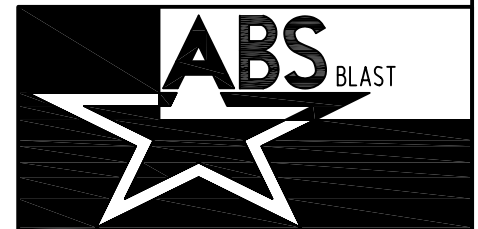
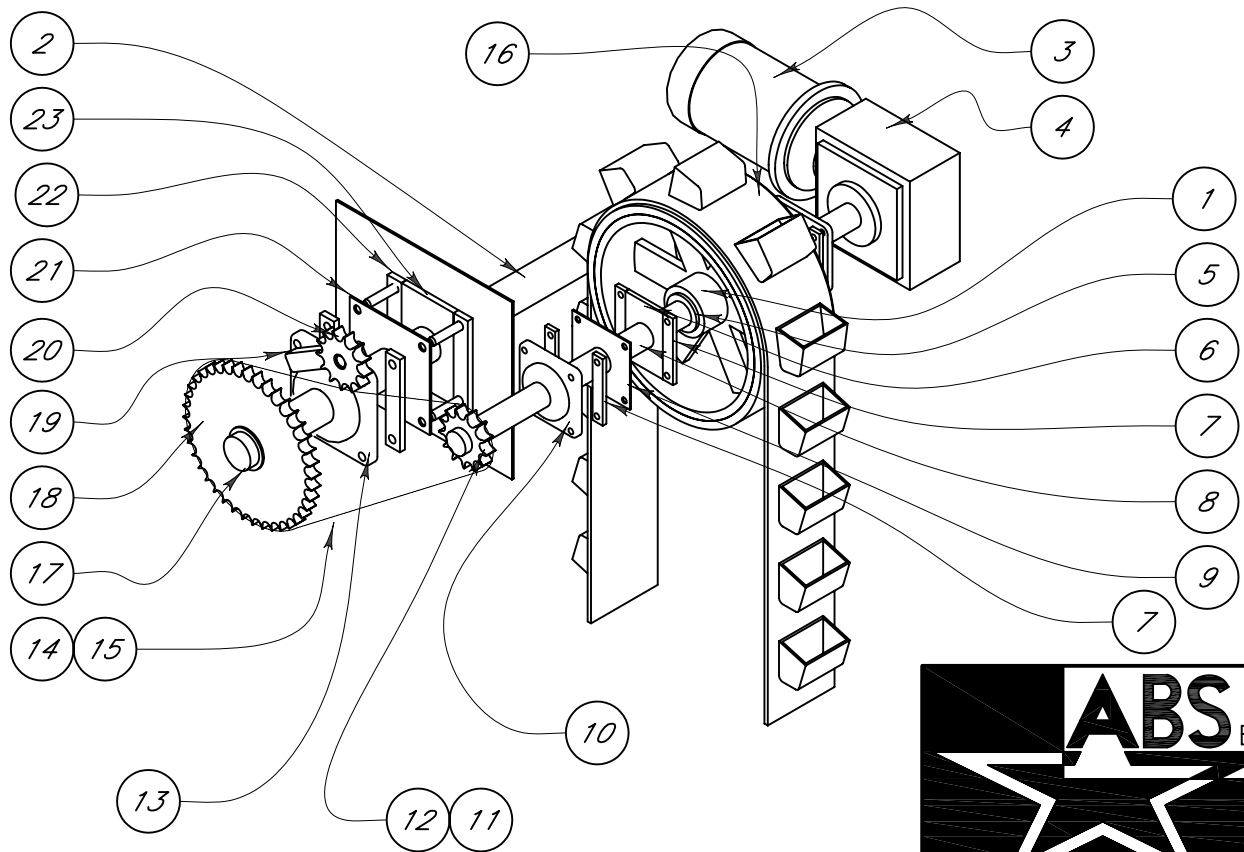




SECTION VIII

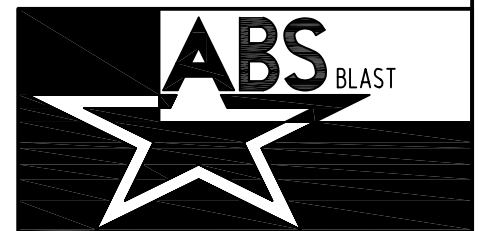
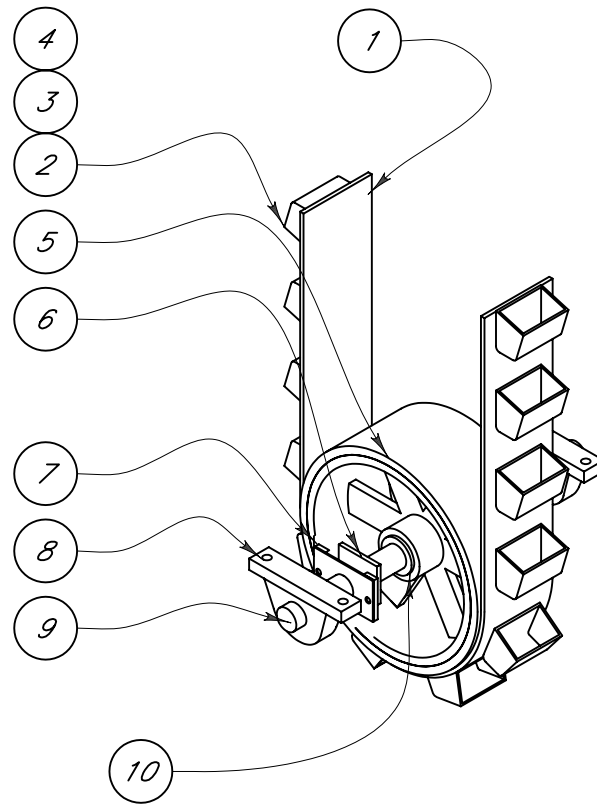
COMPONENT ASSEMBLY DRAWINGS

	Part no.	Qty.	Description
1	Lagged Pulley-12	1	5-1/4" W x 12" Od. Rubber lagged pulley
2	ABS2X1634D4	1	2 in x 16-3/4 in Shaft (Rotary screen drive shaft)
3	BAL-VM3558T	1	Baldor #VM3558T / 2 hp, 145 TC, TEFC, 3528M, F1, 3 phase 230/460, 60HZ, 1725 RPM, C face with no feet
4	REDBAL-HF92620B7H-SFL	1	Baldor Reducer HF-926-20-B7H-SFL 1- 7/16" hollow bore Sealed for life
5	BUSHSFX17/16	1	SF x 1- 7/16" Elevator Pulley Bushing/Quick Disconnect, Dodge
6	SEALFESH	2	Felt Seal for Elevator Head Shaft
7	Spacer Bar 1716BRG	8	Spacer Bar for 1- 7/16" Bearing
8	SH1716X24H	1	1- 7/16" x 24" Elevator Head Shaft
9	SRP-ELV-HD	2	5" x 5" x 10GA" Seal clamp plate
10	BRG1716FB	2	Dodge F4BSCM107 / 1- 7/16" Flange Bearing
11	SPK60P13H	1	SPK60P13H / #60 Drive Sprocket, Martin 00811673
12	BUSHP1X17/16	1	Martin 00810610 / P1 x 1- 7/16" Bushing
13	BRG2000FB	1	Dodge F4BSCM200 / 2" Flange Bearing
14	CH60	1	#60 Drive Chain / 10 ft box
15	CH60 C/L (Master)	1	#60 Full link 1)->12in Rotary screen
16	ELEVBLT	1	1/2in. x 5in. R30 elevator belt x 39 ft.-0in. Long.
17	BUSHQ1X2	1	Q1 x 2 Bushing, Martin 00810607
18	SPK60Q40	1	Martin 60Q40 Sprocket, 00811674
19	TENS SE15	1	Lovejoy #60 Chain Tensioner
20	SPK60BB15H	1	Martin Idler Sprocket / 60BB15H
21	SRP-2	1	Seal Retainer Plate for 2" Bearing, 10 gauge P & O
22	Spacer Bar 2FB	4	Spacer Bar for 2" Flange Bearing
23	SEALFE2	1	2" Flange Bearing Felt Seal



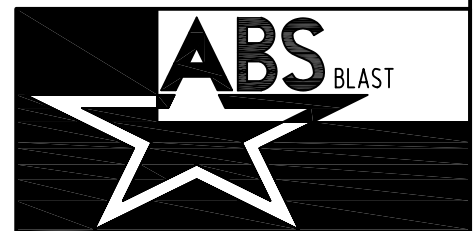
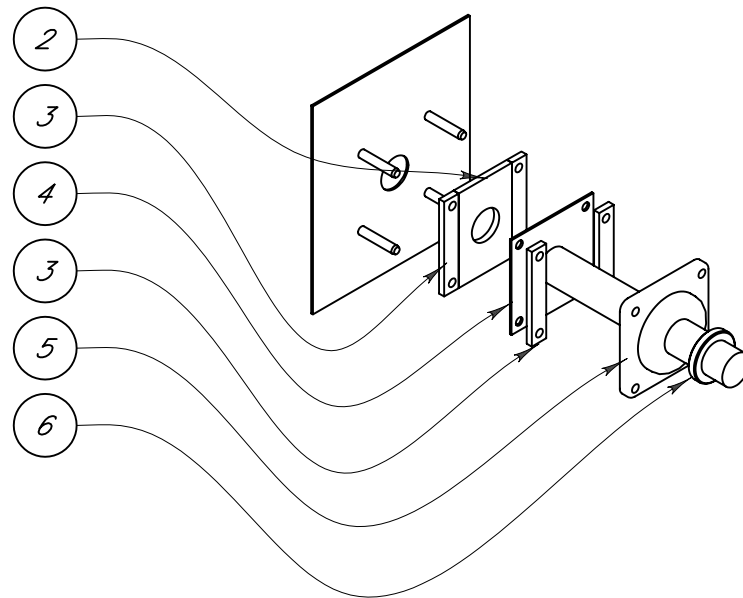
Elevator top assembly With Rotary Screen drive

	Part no.	Qty.	Description
1	ELEVBLT	1	1/2in. x 5in. R30 elevator belt x 39 ft.-0in. Long.
2	ELVBUCK4X234X3	91	Elevator Bucket, 4" wide x 2-3/4" deep x 3" long
3		182	1/4 x (1x) 1/4 Bolt bucket elevator
4		182	1/4 Nylock nut
5	PULLEY-12	1	5-1/4" W x 12" Od. Rubber lagged pulley
6	SEALFESB	2	Felt Seal for Elevator Boot Shaft
7	SRP-ELV-BT	2	Seal Retainer Plate for Elevator Boot, 10 gauge P & O
8	BRG1716PB	2	Dodge P2BSCM107 / 1- 7/16" Pillow Block Bearing
9	SH1716X15B	1	1- 7/16" x 15" elevator boot shaft
10	BUSHSFX17/16	1	SF x 1- 7/16" Elevator Pulley Bushing/ Quick Disconnect, Dodge



Elevator bottom assembly

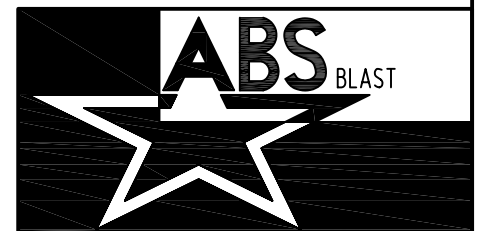
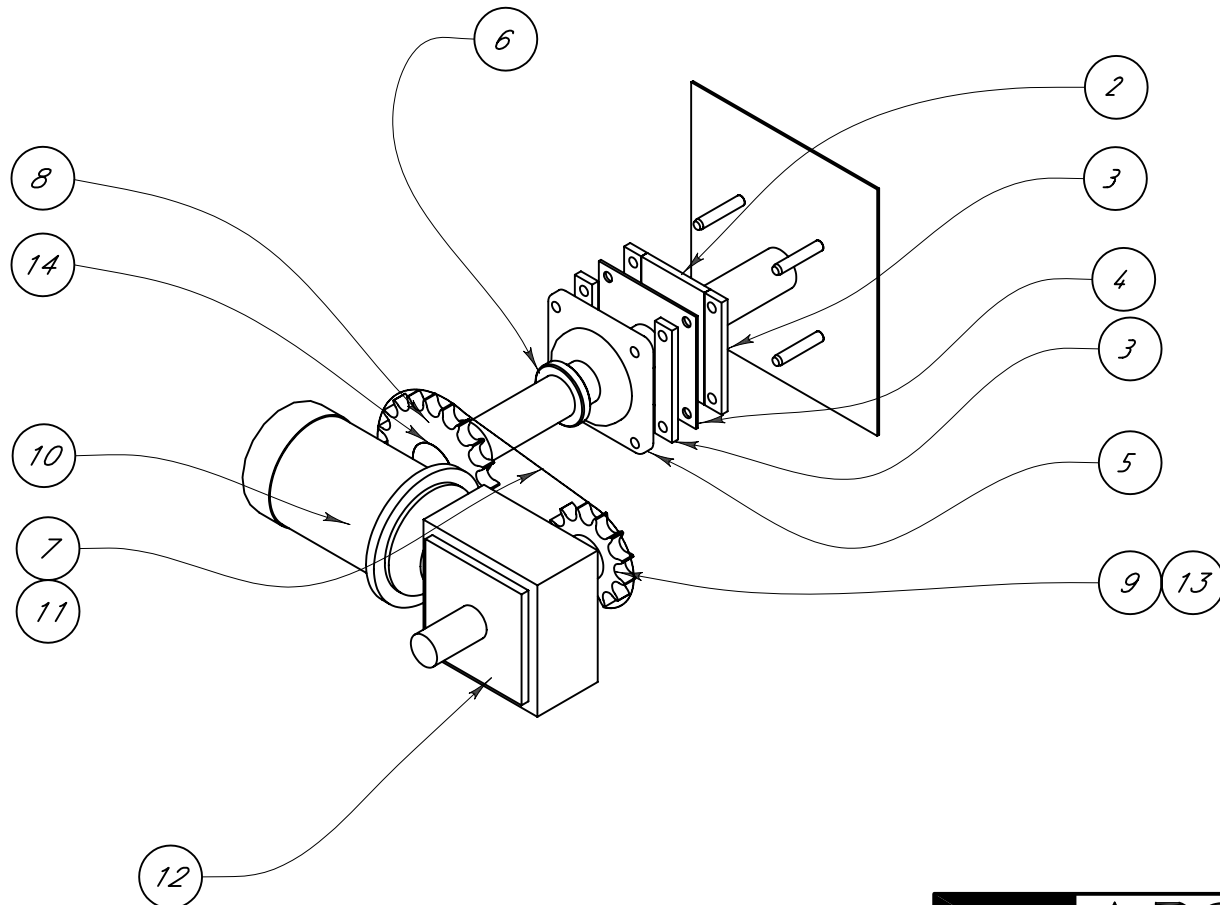
	<i>Part no.</i>	<i>Qty.</i>	<i>Description</i>
1	<i>Bolt Set</i>	2	<i>5/8-11 x 7" Grade 8 Hardened Bolt & Nut set for Auger Ends</i>
2	<i>SEALFE2</i>	1	<i>2" Flange Bearing Felt Seal</i>
3	<i>Spacer Bar 2FB</i>	4	<i>Spacer Bar for 2" Flange Bearing</i>
4	<i>SRP-2</i>	1	<i>Seal Retainer Plate for 2" Bearing, 10 gauge P & O</i>
5	<i>BRG2000FB</i>	1	<i>Dodge F4BSCM200 / 2" Flange Bearing</i>
6	<i>SPLIT COLLAR-2</i>	1	<i>2" Split Collar / SP32F</i>



Rotary Screen free end bearing assembly

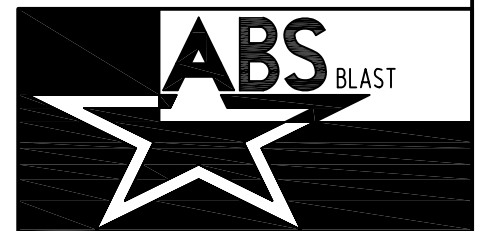
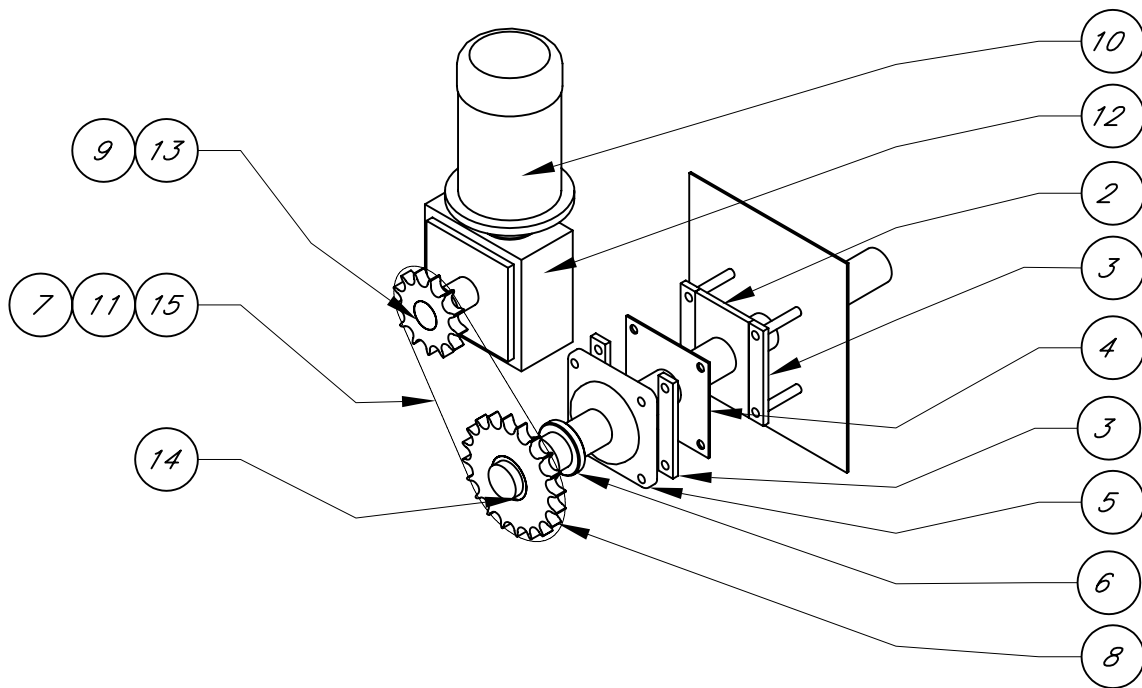
	Part no.	Qty.	Description
1	xBolt Set	2	5/8-11 x 7" Grade 8 Hardened Bolt & Nut set for Auger Ends
2	SEALFE2	1	2" Flange Bearing Felt Seal
3	Spacer Bar 2FB	4	Spacer Bar for 2" Flange Bearing
4	SRP-2	1	Seal Retainer Plate for 2" Bearing, 10 gauge P & O
5	BRG2000FB	1	Dodge F4BSCM200 / 2" Flange Bearing
6	SPLIT COLLAR-2	1	2" Split Collar / SP32F
7	CH80	1	#80 Chain
8	SPK80Q20H	1	Martin #80 Drive Sprocket / 80Q20H
9	SPK80P13H	1	Martin #80 Drive Sprocket / 80P13H
10	BAL-VM3611T	1	Baldor Motor #VM3611T / 3 hp, 182 TC, TEFC, 3 phase, 230/460, 60HZ, 1725 RPM, C face with no feet
11	CH80 C/L (Master)	1	#80 Chain / Connector (Master) Link
12	0220-63874	1	Hub City Gearbox: 384A 40/1 WR 182TC with double output shaft, 3/8" key, 0220-63874
13	BUSHP1X11/2	1	MAR00877140 / P1 x 1-1/2" Bushing
14	BUSHQ1X2	1	Q1 x 2 Bushing, Martin 00810607
15	CH80 O/L (Half)	1	#80 Chain / Offset (Half) Link

Quantities shown are for 1 (One) unit only.



3Hp Auger drive

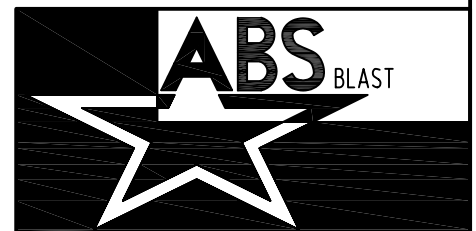
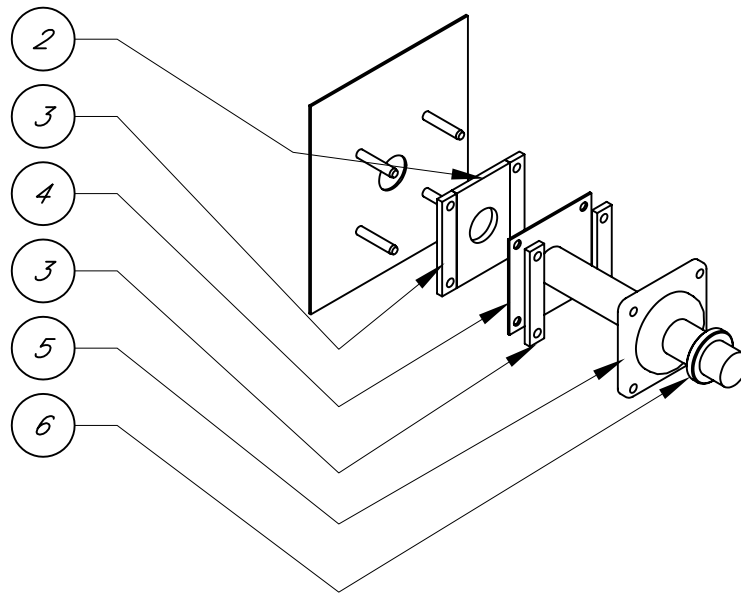
	Part no.	Qty.	Description
1	xBolt Set	2	5/8-11 x 7" Grade 8 Hardened Bolt & Nut set for Auger Ends
2	SEALFE2	1	2" Flange Bearing Felt Seal
3	Spacer Bar 2FB	4	Spacer Bar for 2" Flange Bearing
4	SRP-2	1	Seal Retainer Plate for 2" Bearing, 10 gauge P & O
5	BRG2000FB	1	Dodge F4BSCM200 / 2" Flange Bearing
6	SPLIT COLLAR-2	1	2" Split Collar / SP32F
7	CH80	1	#80 Drive Chain / 10 ft box
8	SPK80Q20H	1	Martin #80 Drive Sprocket / 80Q20H
9	SPK80P13H	1	Martin #80 Drive Sprocket / 80P13H
10	BAL-VM3611T	1	Baldor Motor #VM3611T / 3 hp, 182 TC, TEFC, 3 phase, 230/460, 60HZ, 1725 RPM, C face with no feet
11	CH80 C/L (Master)	1	#80 Chain / Connector (Master) Link
12	0221-14385	1	Hub City Gearbox: 384C 40/1 WR 182TC with Right Hand 5" Projection, 0221-14385
13	BUSHP1X1/2	1	MAR00877140 / P1 x 1-1/2" Bushing
14	BUSHQ1X2	1	Q1 x 2 Bushing, Martin 00810607
15	CH80 O/L (Half)	1	#80 Chain / Offset (Half) Link



3Hp RH Cross Auger drive

	<i>Part no.</i>	<i>Qty.</i>	<i>Description</i>
1	<i>Bolt Set</i>	2	<i>5/8-11 x 7" Grade 8 Hardened Bolt & Nut set for Auger Ends</i>
2	<i>SEALFE2</i>	1	<i>2" Flange Bearing Felt Seal</i>
3	<i>Spacer Bar 2FB</i>	4	<i>Spacer Bar for 2" Flange Bearing</i>
4	<i>SRP-2</i>	1	<i>Seal Retainer Plate for 2" Bearing, 10 gauge P & O</i>
5	<i>BRG2000FB</i>	1	<i>Dodge F4BSCM200 / 2" Flange Bearing</i>
6	<i>SPLIT COLLAR-2</i>	1	<i>2" Split Collar / SP32F</i>

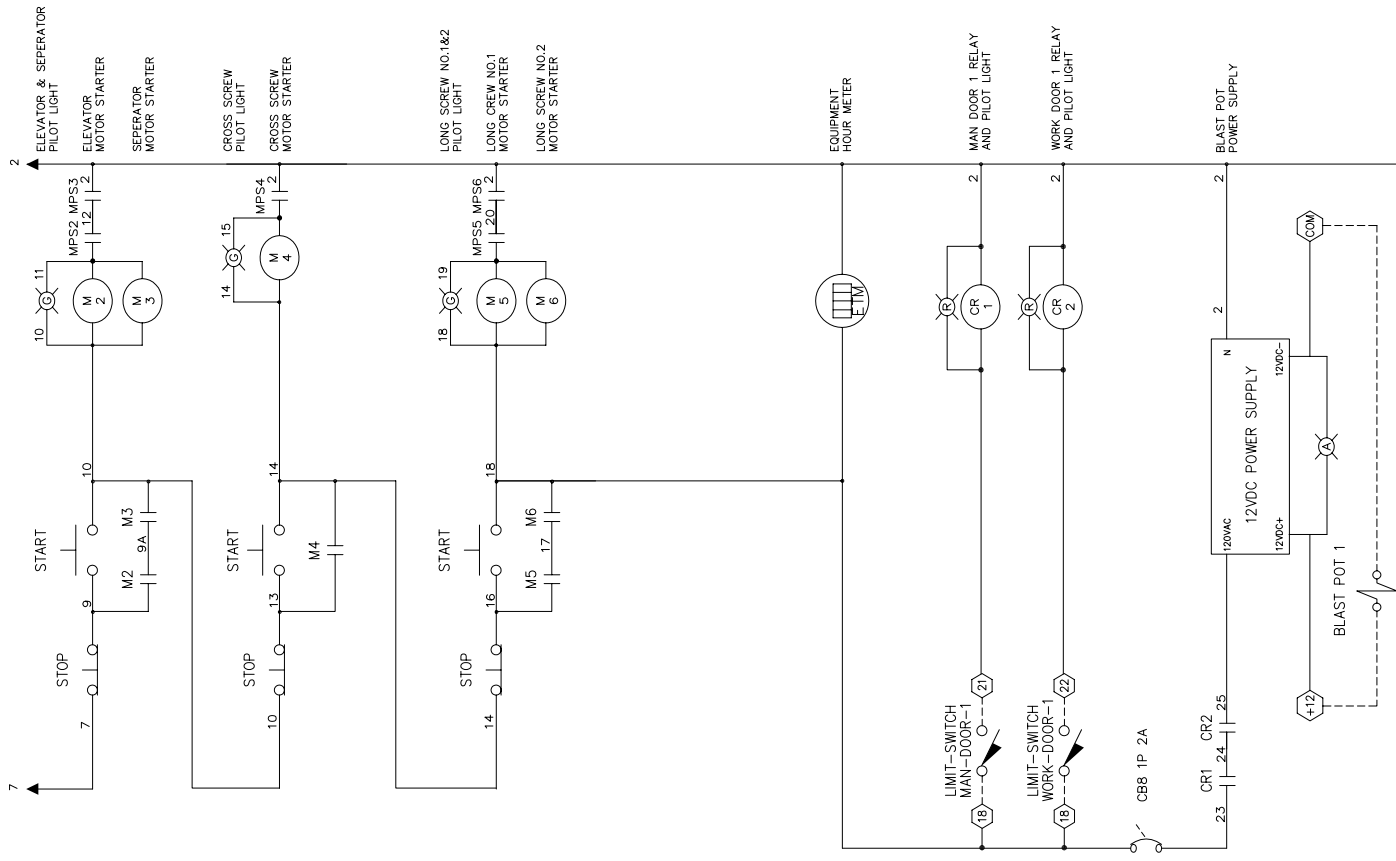
Quantities shown are for 1 (One) unit



Auger Free end bearing assembly

SECTION VIII

ELECTRIC PANEL DRAWING



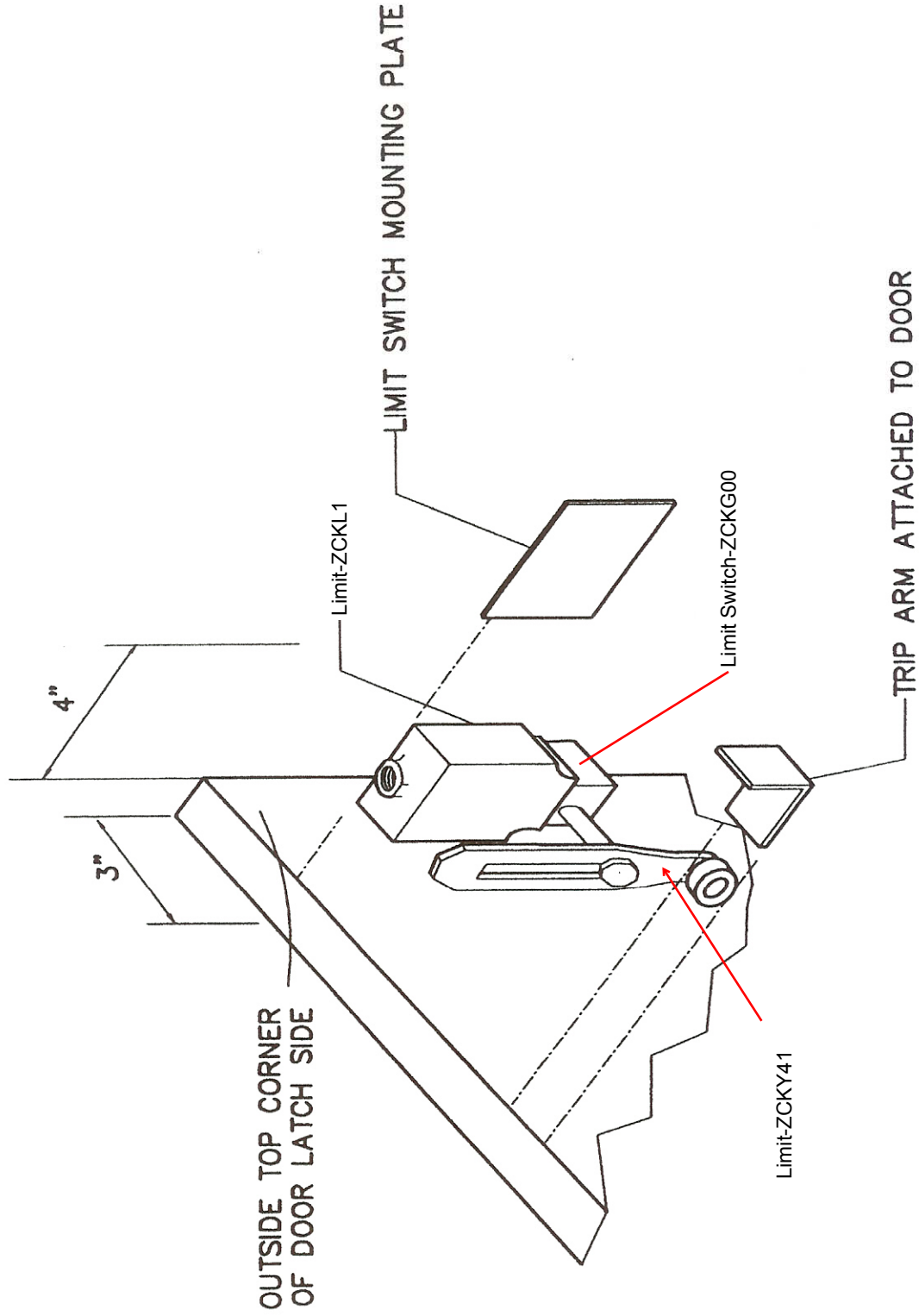
- 122 ELEVATOR & SEPERATOR PILOT LIGHT
- 123 ELEVATOR MOTOR STARTER
- 125 SEPERATOR MOTOR STARTER
- 126 CROSS SCREW PILOT LIGHT
- 127 CROSS SCREW MOTOR STARTER
- 128 LONG SCREW NO.1&2 PILOT LIGHT
- 129 LONG SCREW NO.1 MOTOR STARTER
- 130 LONG SCREW NO.2 MOTOR STARTER
- 131
- 132
- 133
- 134
- 135
- 136
- 137
- 138
- 139
- 140
- 141
- 142
- 143
- 144
- 145

NOTE: BLAST POT INTERLOCKED WITH DOOR LIMITS

SECTION VIII

DOOR LIMIT SWITCH

Abrasive Blast Systems, LLC
250 S. Shiloh Road, Bldg 3
Garland, TX 75042



TYPICAL DOOR LIMIT SWITCH

Instruction Bulletin

Replaces 6008344 REV. 1

Telemecanique XCK-L Limit Switch Compact, General Purpose

INTRODUCTION & SPECIFICATIONS

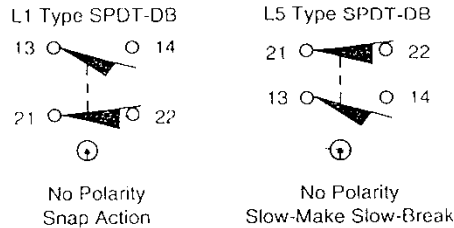
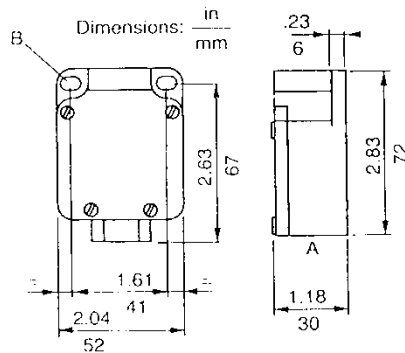


Figure 1: Wiring Diagrams



A = 0.5 in. (12.7 mm) NPT conduit opening
 B = 2 mounting holes
 0.20 x 0.24 in. (5.2 x 6.2 mm)

Figure 2: ZCK L1, L5 Dimensions

XCK-L limit switches are easy to install. The contact block is accessible from the front when the cover plate is removed, and can be wired or replaced in the field without removing the enclosure from its mounting. All contacts have captive riding saddle clamp terminals. The XCK-L switch is available in positive opening snap action (L1) and slow-make slow-break (L5) versions. 1 leads can be indexed to any of four positions. The standard side rotary switch is field convertible to clockwise/counterclockwise (CW/CCW) operation.

Table 1: General Specifications

Operating Temperature range	-13 to 158 °F (-25 to +70 °C) The minimum temperatures listed are based on the absence of freezing moisture or water
Enclosure rating	NEMA Type: 1, 2, 3, 4, 12 CENELEC Type: IP66
Housing	Diecast zinc alloy
Vibration resistance	25 G (10–500 Hz), conforming to IEC 68-2-6
Shock resistance	50 G, conforming to IEC 68-2-27
Repeatability	0.002 in. (0.05 mm)
Cable entry	1/2 in. NPT standard
Approvals	UL File E46410, CSA File LR44561, CE, VDE, CENELEC, ASA, DEMCO, NEMCO, and other international approvals

Table 2: Contact Characteristics

Rated thermal current	10 A
Rated insulation voltage	300 VAC and DC (A300 and Q300)
Contact resistance (max.)	25 mΩ
Cable (max.)	2 x #14 AWG (2.5 mm ²) per terminal
Short circuit protection	XCK-L limit switches comply with IEC 947-5-1 when protected with a 10 A fuse type SC, gl or N.

Table 3: Electrical Ratings: A300 (AC), Q300 (DC)

Contact Rating Designation	Thermal Continuous Test Current: A300 (AC) - 10 Amps, Q300 (DC) - 2.5 Amps															
	120 V		125 V		240 V		250 V		480 V		≤ 600 V		Maximum Volt Amp			
	M	B	M	B	M	B	M	B	M	B	M	B	M	B		
A300 (AC)	60	6.00	—	—	30	3.00	—	—	—	—	—	—	—	—	7200	720
Q300 (DC)	—	—	0.55	0.55	—	—	0.27	0.27	—	—	—	—	—	—	—	—

M = Make, B = Break

PROGRAMMING THE ROTARY HEAD

The ZCK G00 rotary head is field convertible to CW, CCW or CW/CCW (see Figure 3).

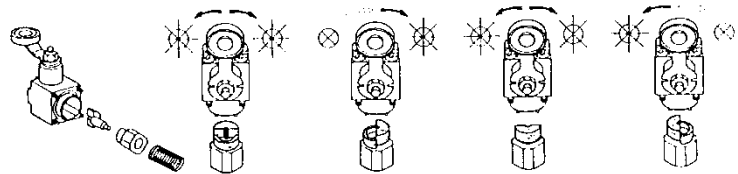


Figure 3: Converting the ZCK G00 Head

INSTALLATION AND APPLICATION

⚠ DANGER

HAZARDOUS VOLTAGE

Disconnect all power before working on equipment.

Electric shock will result in death or serious injury.

Dwelling Requirements

For applications requiring fast motions, select a cam that operates the limit switch long enough to actuate the relays, valves, etc.

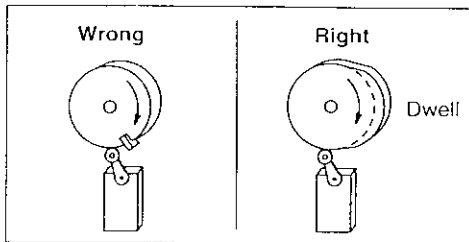


Figure 4: Using Dwell to Sustain Switch Operation

Lever Actuators

For limit switches with lever actuators, apply the actuating force as perpendicular to the lever as practical and perpendicular to the shaft axis (about which the lever rotates).

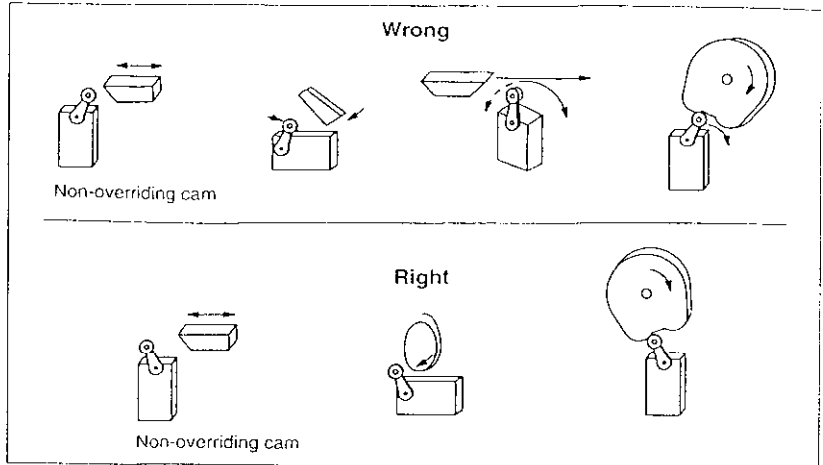


Figure 5: Examples of Actuating Force

Overtravel Limitations

Do not operate the limit switch beyond its overtravel limit position. Select an operating mechanism that ensures the limit switch operates within its range under all normal and emergency conditions. Do not use a limit switch as a mechanical stop.

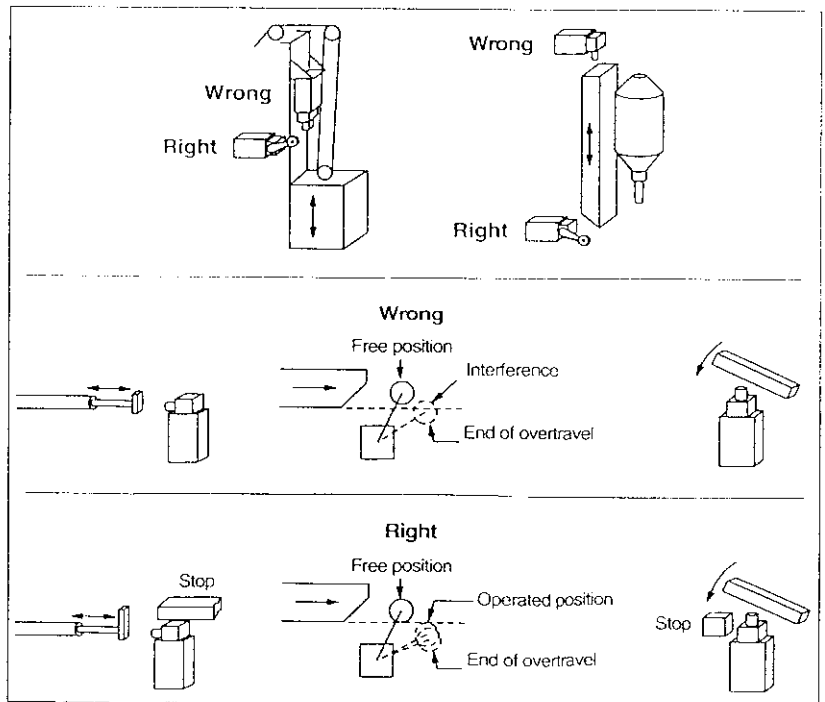



Figure 6: Preventing Overtravel

Square D Company
8001 Hwy 64 East
Knightdale, NC 27545 USA
(919) 266-3671
www.squared.com

Square D and  are registered trademarks of Square D Company.

Electrical equipment should be serviced only by qualified electrical maintenance personnel. No responsibility is assumed by Square D for any consequences arising out of the use of this material.