

D

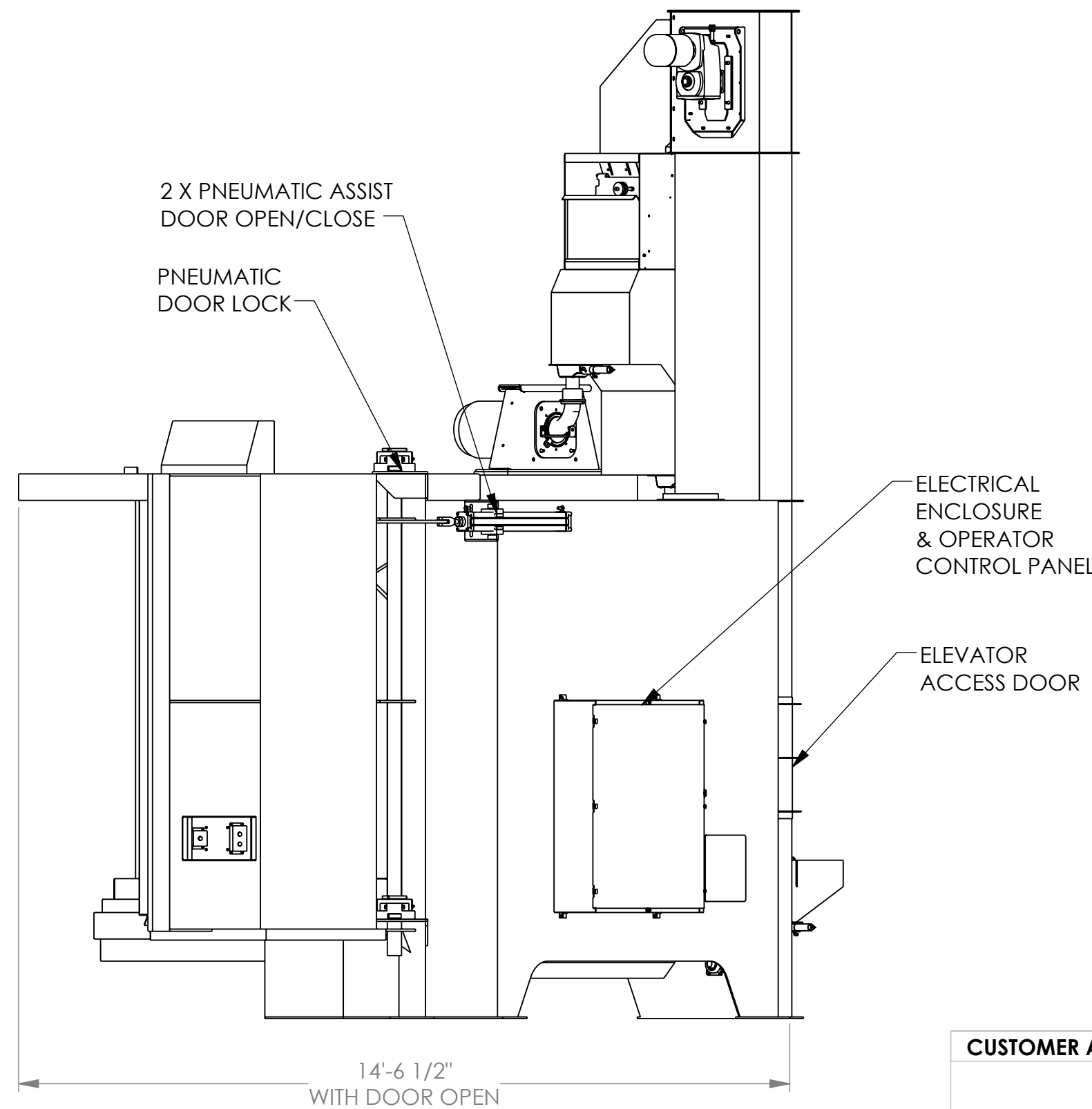
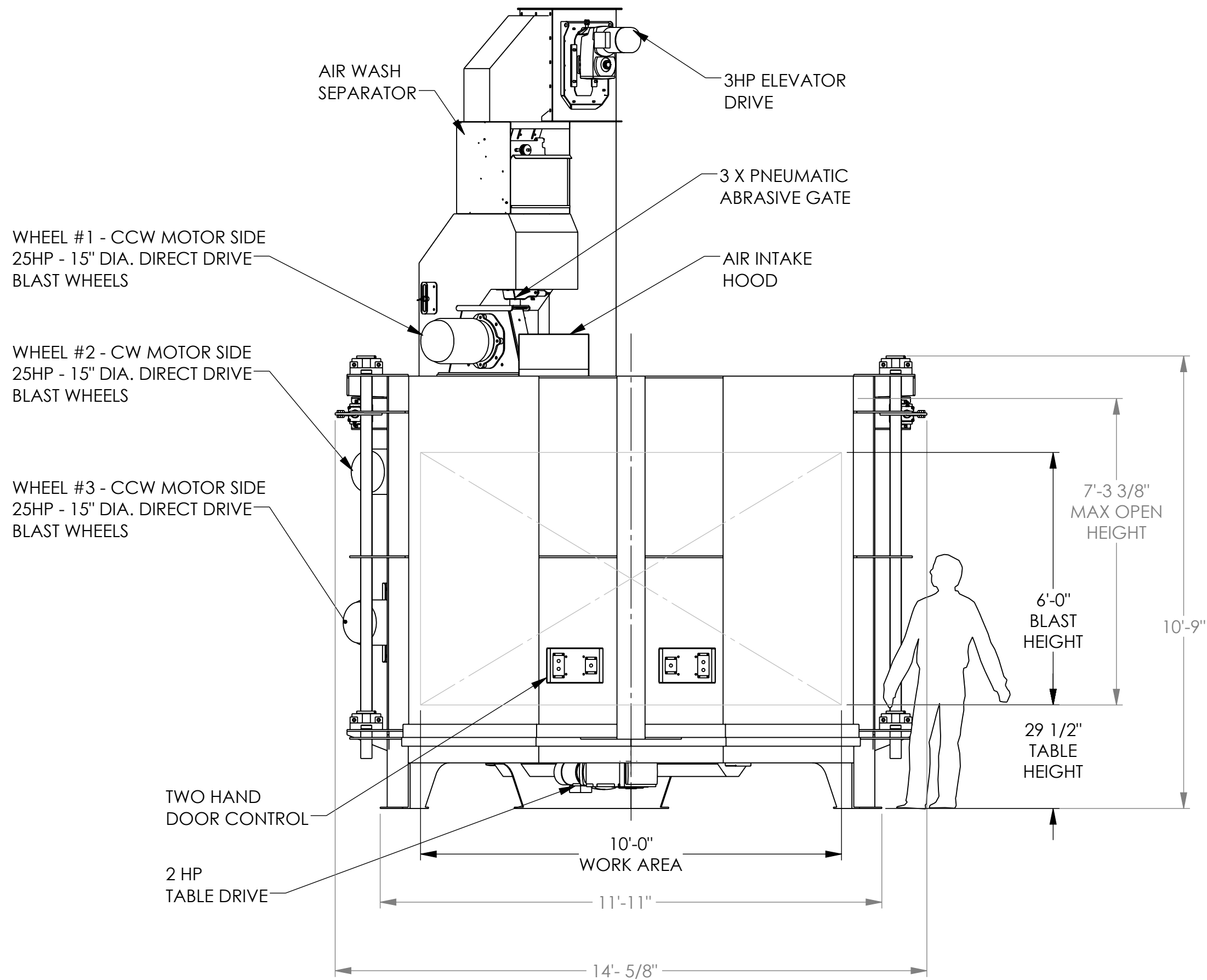
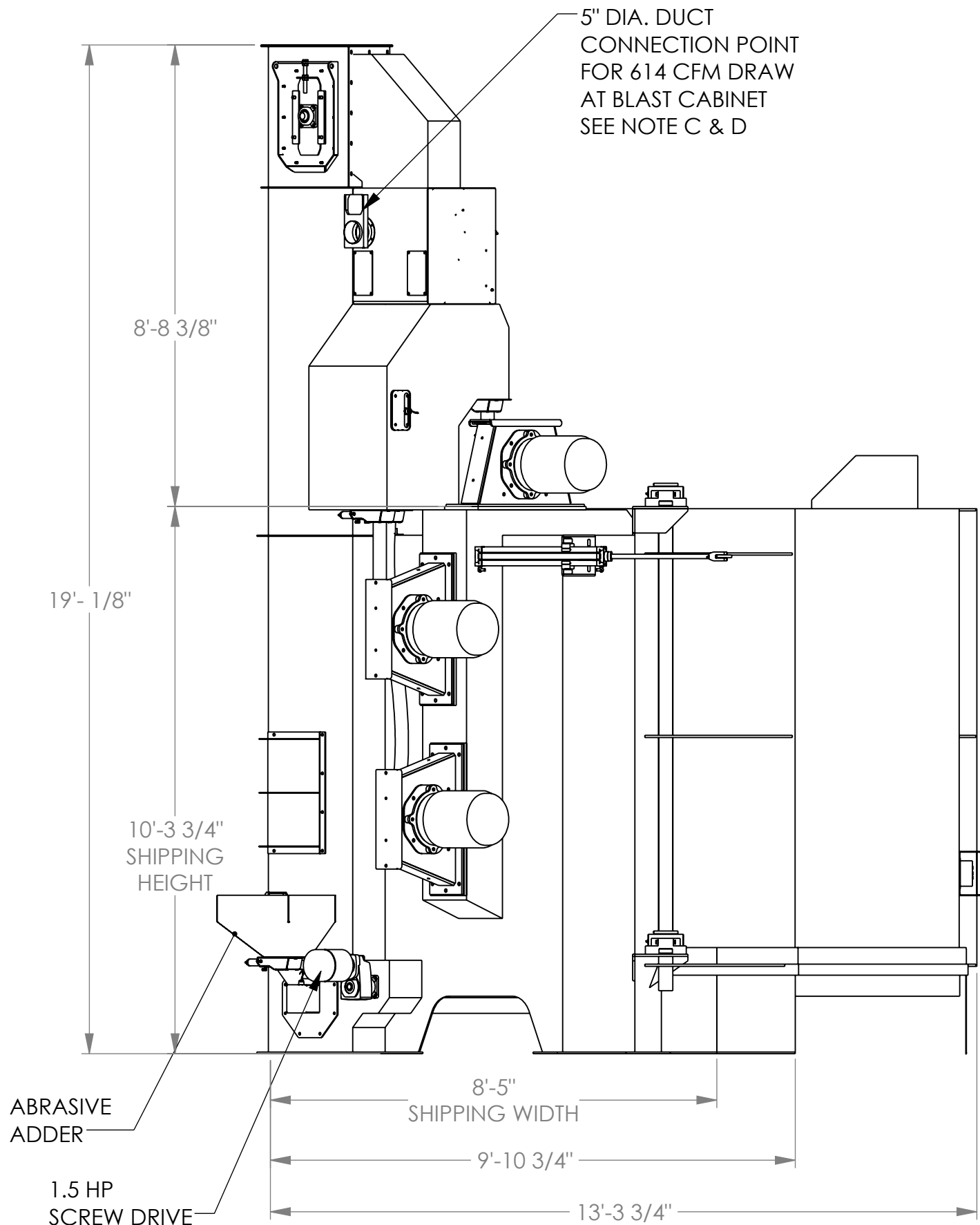
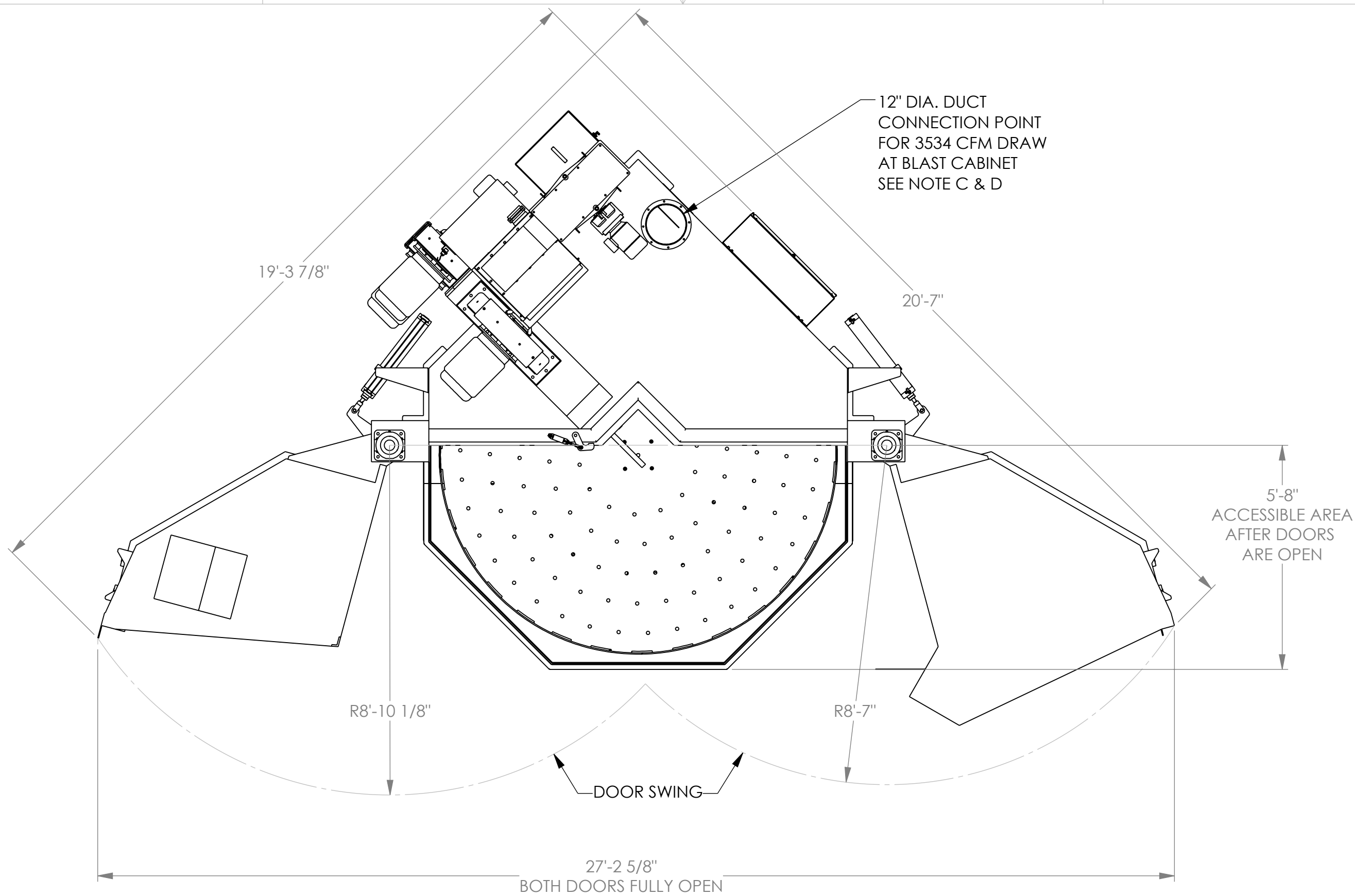
C

B

A

NOTES:

- THIS DRAWING IS SHOWN WITH LIMITED DETAIL FOR PURPOSES OF GENERAL ARRANGEMENT ONLY.
- MACHINE REQUIRES:
  - 114.84 FULL LOAD AMP @ 460 VOLT - 3 PHASE 60 CYCLE SERVICE AT CONTROL PANELS, 125 AMP BREAKER.
  - 8 CFM 80min - 110max PSI OF CLEAN DRY AIR, FOR ABRASIVE GATES, DOOR PNEUMATIC ASSIST, AND DUST COLLECTOR.
  - DUCT CONNECTION POINTS ON MACHINE PROVIDE UP TO A MAXIMUM OF 4148 CFM DRAW TO DUST COLLECTOR.
  - ALL VENTILATION DUCTS MUST BE SIZED TO PROVIDE 4500 FPM VELOCITIES FOR THE CFM SPECIFIED AT THE VARIOUS CONNECTION POINTS. SOME CONNECTION POINTS MAY REQUIRE A REDUCER TRANSITION TO CONNECT TO THE APPROPRIATE SIZED DUCT.
  - MACHINE NEEDS APPROXIMATELY 5 TONS OF ABRASIVE FOR START UP.
- SAFETY:
  - MACHINE AND ACCESSORIES WILL HAVE INDUSTRY STANDARD SAFETY LABELS TO DEFINE DIFFERENT TYPES OF POTENTIAL HAZARDS, ie. EYE PROTECTION REQ., etc. THAT ALL PERSONNEL WHOM ARE IN THE VICINITY OF THE MACHINE MUST ADHERE TO.
  - COVERS / PANELS THAT REQUIRE TOOLS TO OPEN OR REMOVE ARE INTENDED FOR MAINTENANCE USE ONLY AND MACHINE SHOULD BE IN LOCKOUT STATE PRIOR TO OPENING OR REMOVAL.
  - PRODUCT TO BE PROCESSED BY THIS MACHINE IS INTENDED TO BE LOADED AND UNLOADED BY CUSTOMERS EQUIPMENT TO PREVENT OPERATOR INTERACTION WITH MOVING ROLLS ON CONVEYORS. IF PRODUCT IS TO BE LOADED BY OPERATOR, CUSTOMER NEEDS TO TAKE APPROPRIATE SAFETY MEASURES TO PREVENT CONTACT WITH MOVING PARTS OF CONVEYOR TO PREVENT POTENTIAL INJURY.
  - FOR ADDITIONAL SAFETY INFORMATION, AN EQUIPMENT MANUAL WILL BE PROVIDED.
- A DUST COLLECTION SYSTEM IS REQUIRED FOR THIS MACHINE. THIS EQUIPMENT WILL BE USED FOR THE BLASTING OF CARBON STEEL WHICH HAS BEEN KNOWN TO PRODUCE POTENTIALLY HAZARDOUS COMBUSTIBLE DUST. THE CUSTOMER/END USER ASSUMES RESPONSIBILITY FOR CONDUCTING A DUST HAZARD ANALYSIS (DHA) IN ACCORDANCE WITH NFPA 652 AND INSTALLING THE NECESSARY DUST COLLECTOR SYSTEM WITH REQUIRED SAFETY EQUIPMENT AS STIPULATED BY THE RESULTS OF THAT ANALYSIS.



UNLESS OTHERWISE SPECIFIED: DIMENSIONS ARE IN INCHES TOLERANCES FRACTIONS ± 1/8" .XX ± .05 XXX ± .010 ANGULAR ± 3° SURFACE FINISH 125 RMS <b>DO NOT SCALE DRAWING</b>	
MATERIAL	NA
FINISH	NA

WORK ORDER NO.	
DRAWN	DATE
CHECK	
DESIGN - MECH	
DESIGN - ELEC	
MANUFACTURING	
PURCHASING	

 Mach 1 Industrial Park, 19 Kenny Roberts Memorial Dr., Suffield, CT 06078 USA, Ph: 860-668-1050		CUSTOMER APPROVAL SIGNATURE	
		SIZE	REV
D	OHVB9	DWG NO.	A
SCALE 1:48	RELEASE DATE	SHEET 1 OF 2	

D

C

B

A

8

7

6

5

4

3

DWG NO. 6002799

SH 2

2

1

D

D

C

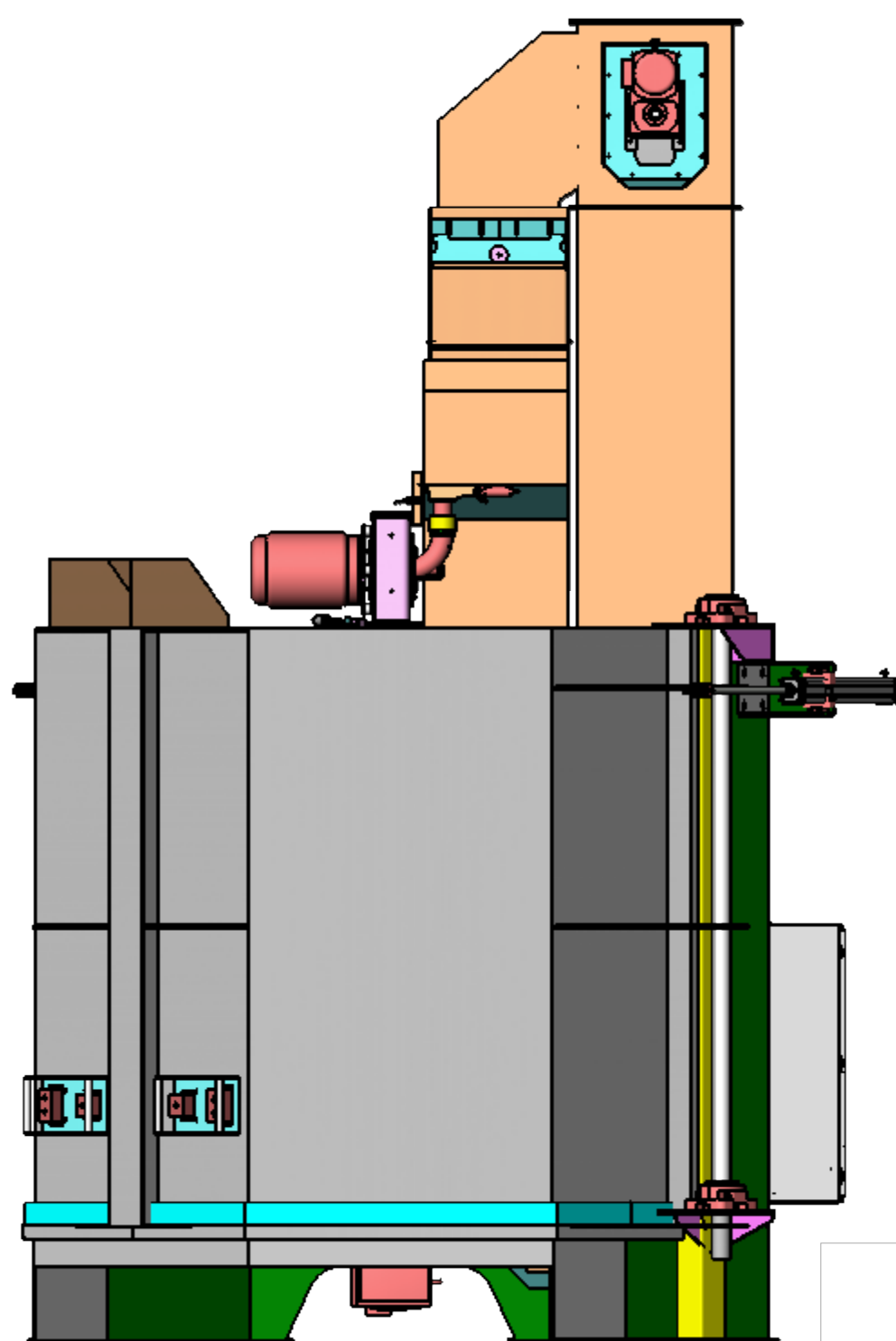
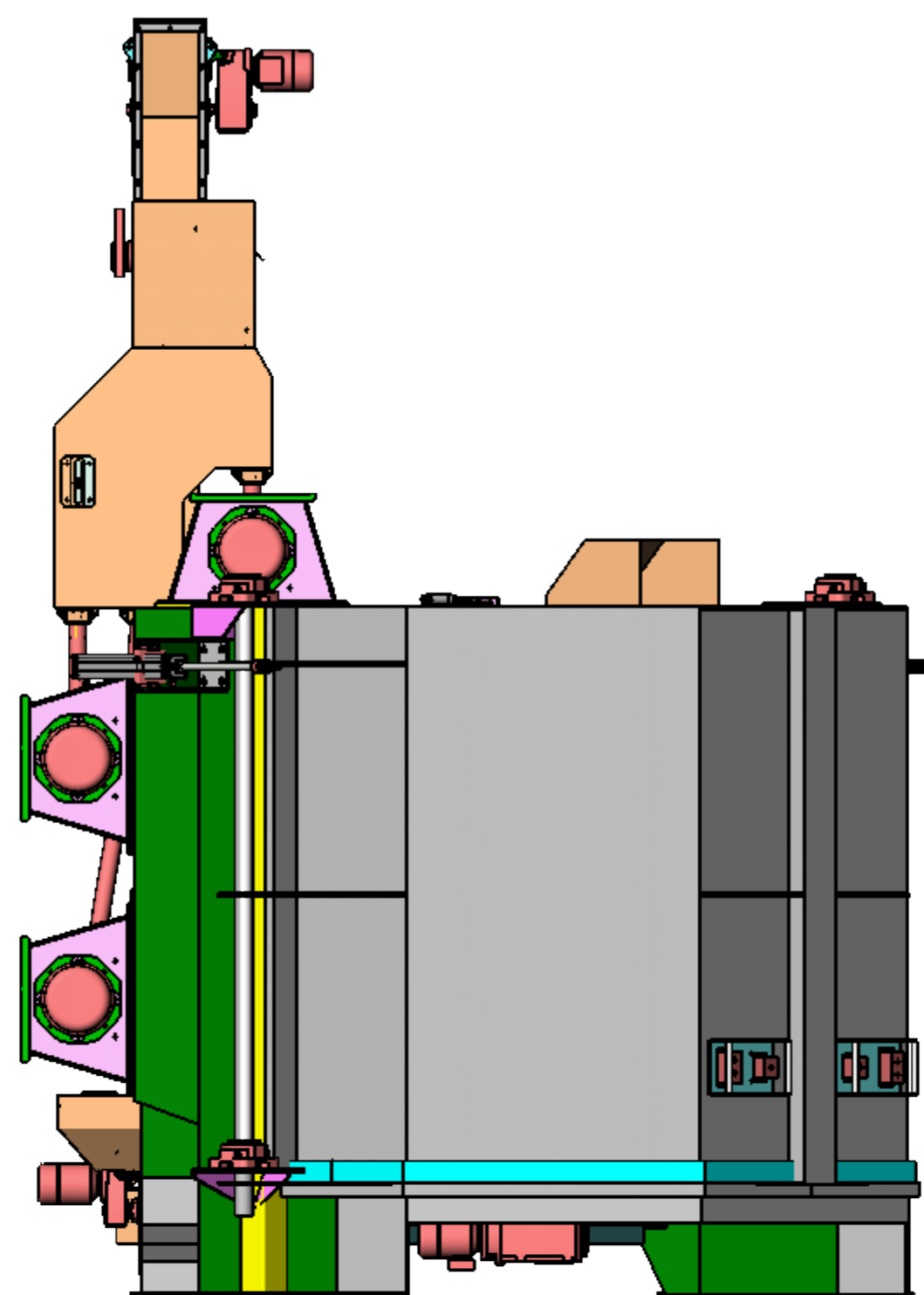
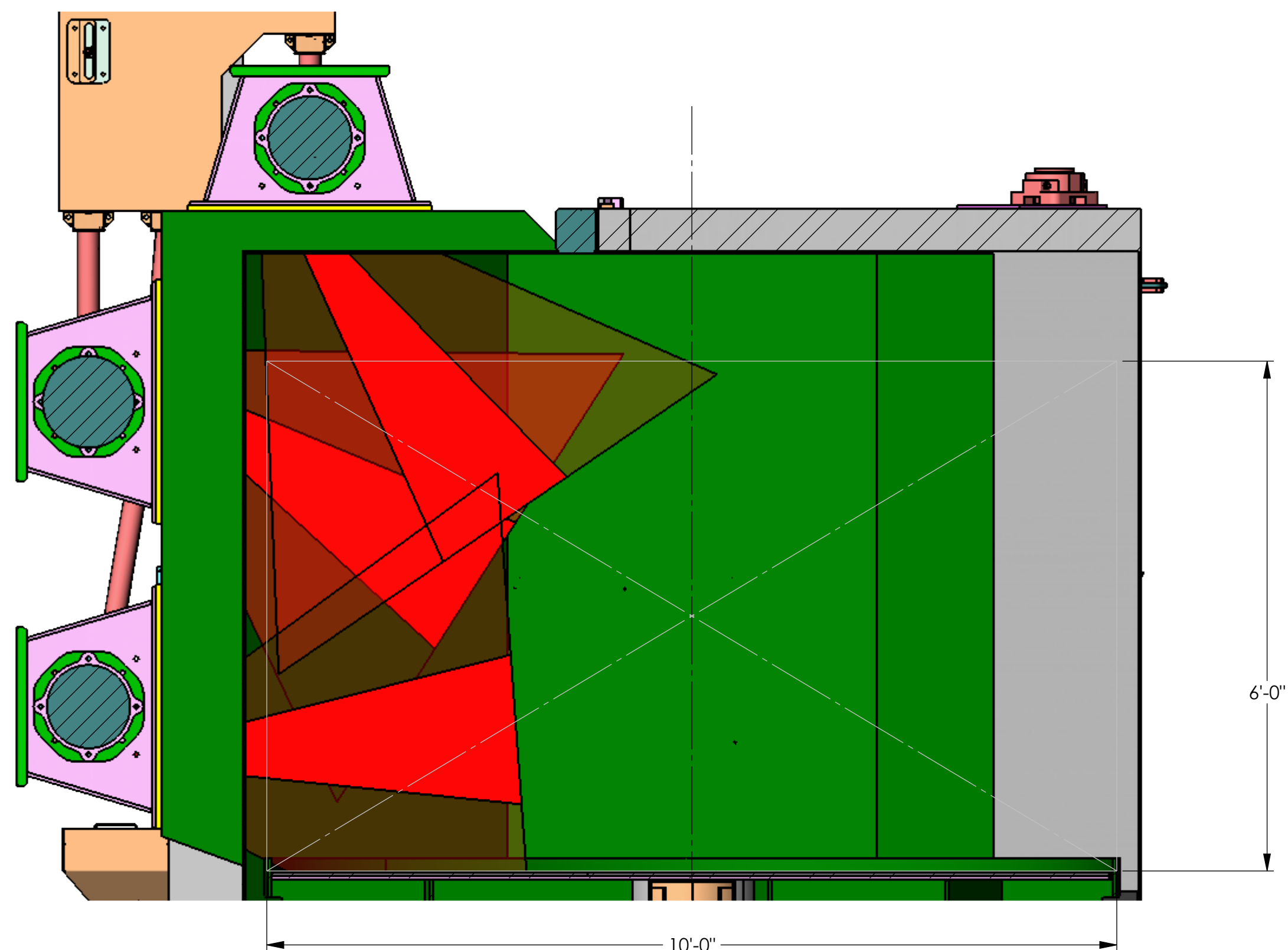
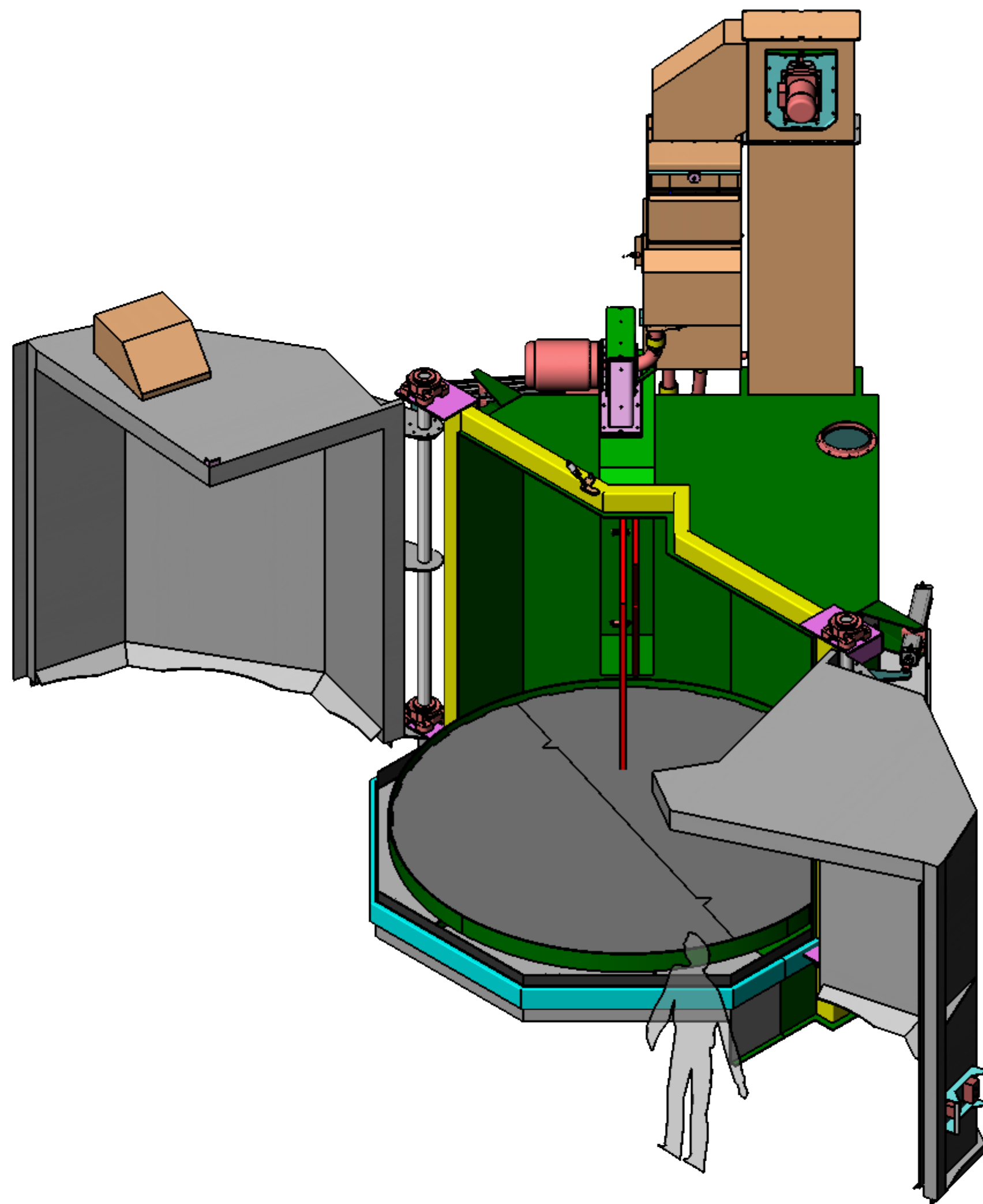
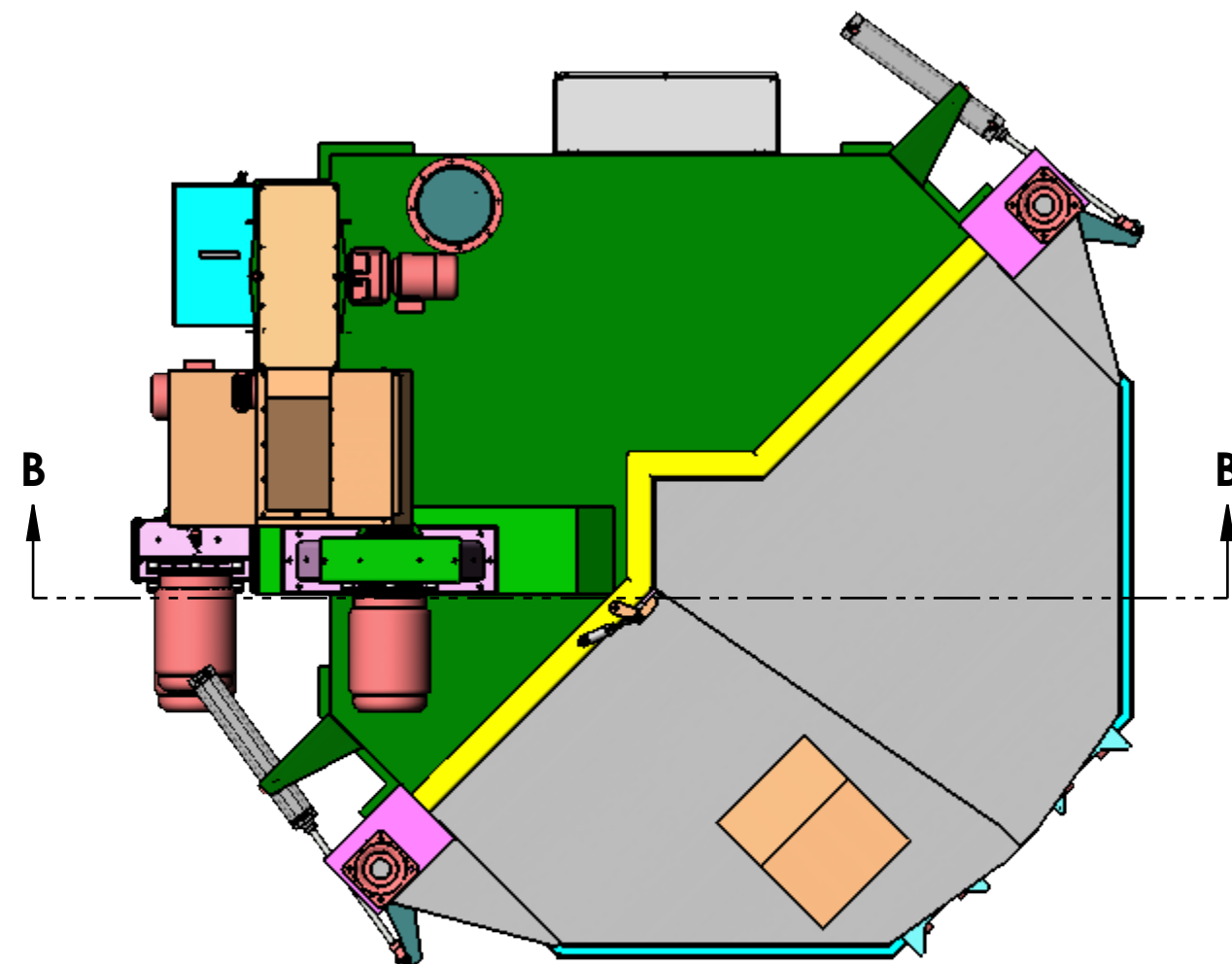
C

B

B

A


A



SECTION B-B  
SCALE 1 : 16

DO NOT SCALE DRAWING

DRAWN  
CHECK



Metal Finish Equipment & Supply Co., Inc. Proprietary  
All information, including mechanical and electrical designs,  
described on or otherwise set forth on this document is  
proprietary and confidential to Metal Finish Equipment  
& Supply Co., Inc. and may not be copied or reproduced by  
any means, or disclosed by the party who receives this  
document to any other party without prior written  
permission from Metal Finish Equipment & Supply Co., Inc.  
This document is on loan from Metal Finish Equipment &  
Supply Co., Inc. and must be immediately returned on demand.

SIZE	CAGE CODE	DWG NO.	REV
D	OHVB9	6002799	A
SCALE 1:48		RELEASE DATE	SHEET 2 OF 2