



# CLIMATE freeze



Operating temperature  
-22/-18 °C

## Freezer with grids CLIMATE freeze *Gastronomy Line*

Climate Freeze is a grid freezer used for the rapid cooling and freezing of products.

### Caratteristiche

Refrigerated cabinets with a monoblock ventilated refrigeration system designed to ensure optimal performance in climate class 5 (tropicalized). The unit is equipped with an easy-extraction mechanism, allowing for quick and convenient maintenance or replacement. The cataphoresis-treated evaporator is equipped with an automatic defrosting system managed by a digital controller. Condensed water is evaporated via a corrosion-resistant coil made of AISI 316 low-carbon steel.

### Porte

The doors are reversible, featuring self-closing and the option to lock them in the 100° open position. The seven-chamber magnetic seal is easily removable for cleaning and maintenance.

### Dettagli

The cabinet is equipped with a system of extractable and adjustable guides and racks, made of AISI 304 stainless steel.

### Comandi

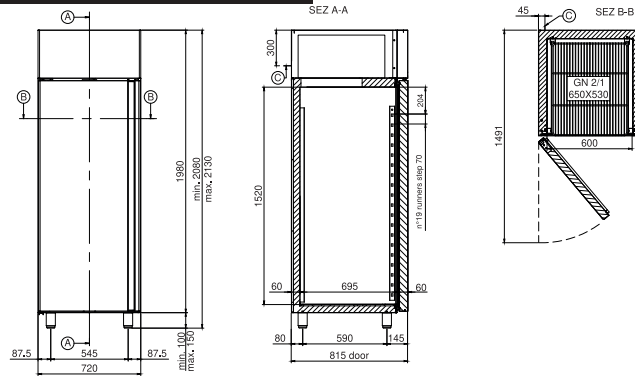
The capacitive touch display ensures a modern and intuitive interaction. The feet, also made of AISI 304 stainless steel, are adjustable to adapt to different installation needs.

### Freezer CLIMATE freeze

Interior fittings	Stainless Steel Rails and Racks AISI 304 - Adjustable and Removable.
Grids included	N.3 - GN 2/1 - 650x530 - plastified
Maximum load per grid (kg)	37
Pair of runners included	N.3 "C" - GN 2/1 - 650x530
Maximum capacity	N.19 (step 70 mm) - GN 2/1 - 650x530
Light under control panel	▪
LED strip	<input type="checkbox"/> €
WiFi kit	<input type="checkbox"/> €
Bluetooth kit	<input type="checkbox"/> €
Key lock	▪
Air distribution duct	<input type="checkbox"/> €
Door opening pedal	<input type="checkbox"/> €
Wheel kit	<input type="checkbox"/> €
Cable with Schuko or UK plug	▪ (Schuko)
▪ <b>Standard</b>   <input type="checkbox"/> <b>Optional</b>   <input type="checkbox"/> € <b>Opzione a pagamento</b>	

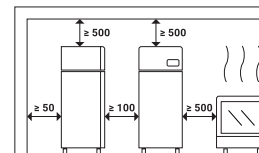


**Caratteristiche tecniche/Technical features**



- A. Piano di sezione
- B. Piano di sezione
- C. Uscita cavo di alimentazione (lunghezza 2 mt)  
**ATTENZIONE!** In fase di installazione prevedere l'intervento di un elettricista qualificato per il collegamento ad un quadro elettrico.

**Distanze minime di rispetto**  
**ATTENZIONE!** La distanza da apparecchiature calde (ad es. friggitorici o forni) deve essere di almeno 500 mm.



Modello/Model	CLIMATE freeze	
Width	mm	720
Depth	mm	815
Height	mm	2080-2130
Net weight (kg)	kg	112
Packaging WxDxH (mm)	mm	760x860x2240
Temperature	°C	(-22/-18)
Energy class		C
Gross volume	L	639
Net freezing volume	L	475
Climate class		5 +40°C / 40% R.H.
Refrigerant gas		R290
Defrosting		ELECTRIC
Condensation evaporation		Condensate evaporation via a corrosion-resistant coil in AISI 316 low carbon steel.
Condensation		AIR
Cooling capacity	W	568
Voltage		AC230V 1N+T 50Hz
Special voltages		(on request) Optional
Power consumption	W	530
Current consumption	A	3,10
Noise level	dB	< 70
NTC probe for temperature detection		standard
Floor support		Adjustable AISI 304 stainless steel feet
Floor support heights	mm	Feet: 100-150 Wheels: 110 - Ø 80 Plinth: 20
Control		Capacitive touch display