

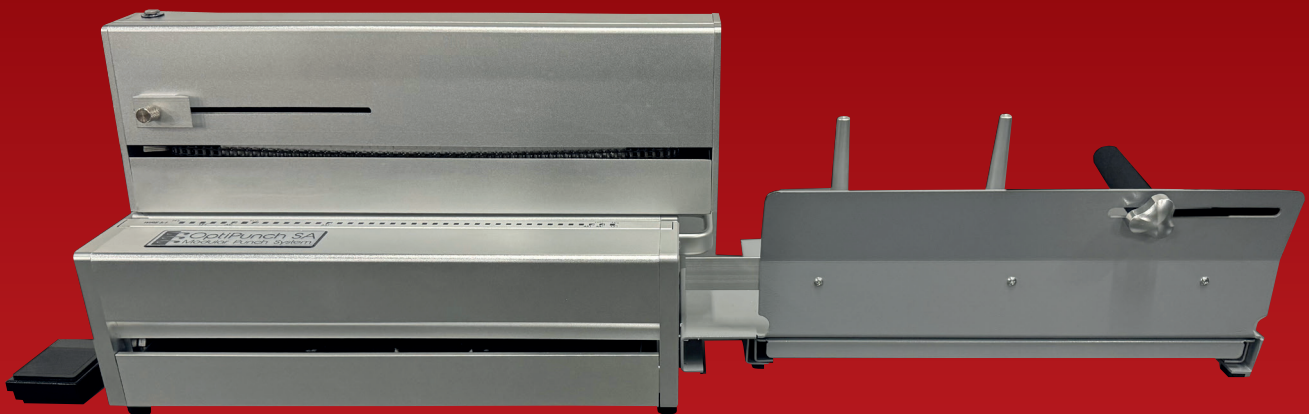
# Glendale

## Presentation Solutions

### OptiPunch SA

#### Professional Semi-Automatic Modular Punching

Power, precision, and productivity in one robust package — the ultimate solution for wire, coil, comb, and calendar binding.



#### Key Benefits

- **Boost Productivity:** Semi-automatic operation with automatic sheet ejection cuts production time dramatically.
- **Versatile Binding Styles:** Interchangeable dies for wire, coil, comb, and calendar formats.
- **Rapid Changeovers:** Swap punch tools in under 60 seconds with the quick-release locking system.
- **Reliable Performance:** All-metal construction for long-term heavy-duty use.
- **Precision Punching:** Foot pedal or button operation for total control.

#### Overview

The **OptiPunch SA** is built for professional environments where speed, accuracy, and adaptability are essential.

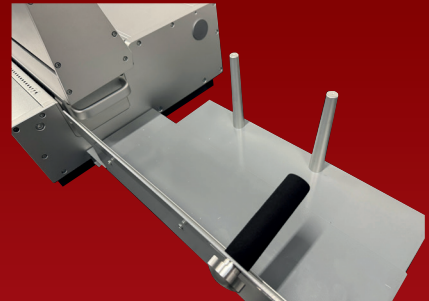
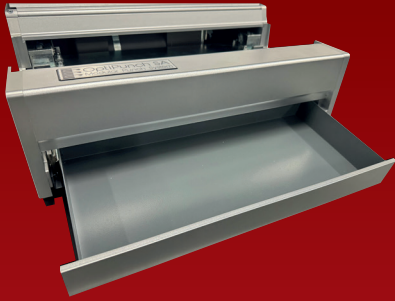
Capable of punching paper, card, and plastics up to **360 mm wide**, this modular system delivers flawless results across multiple binding styles—ideal for producing financial reports, presentations, calendars, notepads, and more.

Engineered for longevity, the **OptiPunch SA** uses high-quality components to ensure years of trouble-free operation.

Punch tool changes take just seconds with the **quick-release locking system**, maintaining perfect punch quality every time. It handles up to **30 sheets (80gsm)** per cycle, with all dies featuring **deselectable punch pins** for flexible size options.

As a **semi-automated punch**, the OptiPunch SA operates much like a traditional binding punch - but with one key advantage: its **electric chain mechanism** automatically removes punched sheets and deposits them into the catch tray. This eliminates manual sheet removal, dramatically reducing production times and increasing efficiency.

## Key Features



- **Automatic Sheet Ejection:** Electric chain mechanism removes sheets from the die and delivers them into the catch tray — no manual removal needed.
- **Flexible Formats:** Punch dies available for wire coil, comb, and calendar thumb cuts.
- **Heavy-Duty Build:** Quality metals and components ensure years of reliable service.
- **Jam-Free Operation:** Built-in overload and reverse functions prevent and clear punch jams instantly.
- **Large Chip Tray:** Reduces interruptions for waste disposal.

## Available Punch Die Sets

- 3:1 Wire Round / 2:1 Wire Round
- 3:1 Wire Square / 2:1 Wire Square
- 3:1 with Calendar Thumb Cut (Square or Round)
- 4:1 Plastic Colour Coil
- Plastic Comb



## Specifications

Punch speed	1 Second cycle
Max Sheet Length	360 mm (longer possible – open ended)
Max Punching Capacity	30 sheets (80 gsm) per cycle
Operation	Semi-automatic or standard
Mode	Foot pedal or button
Fast Tool Change	Yes, under 60 seconds
Tool Locking System	Yes
Overload Reverse Function	Standard
Power Requirement	230 V, 50 Hz
Weight	43 kg
Dimensions	1005 × 450 × 320 mm

