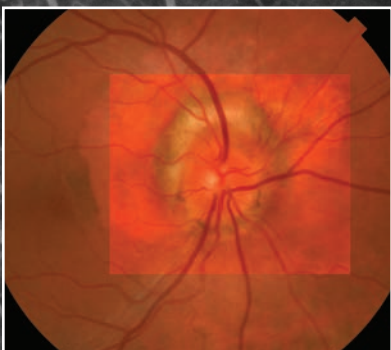
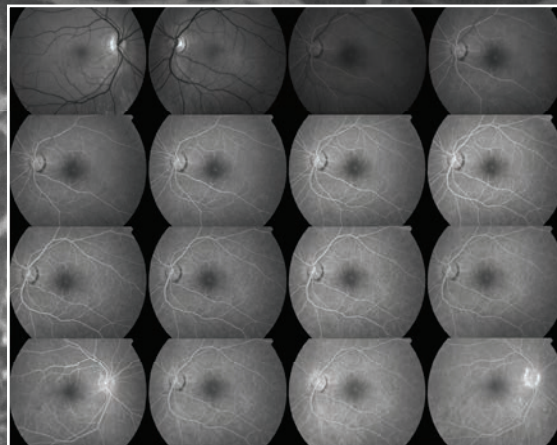
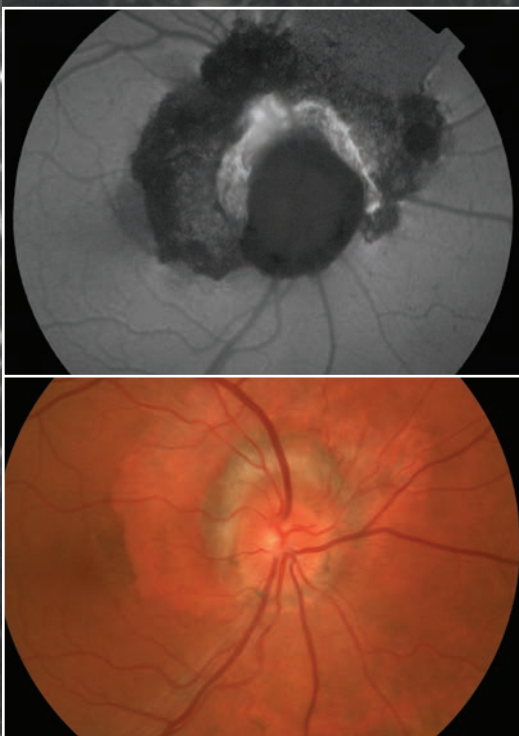






# IMAGEnet

For over 75 years, Topcon has been a global leader and technical innovator in the field of ophthalmic instrumentation. For the past 20 years, Topcon has also become a leader in ophthalmic imaging. Combining its experience in the manufacturing of optical equipment with state-of-the-art technology in digital capture, Topcon has developed generations of ophthalmic documentation systems that are a benchmark in today's eye care.



» Consistent with Topcon's tradition of quality and reliability, IMAGEnet® combines advanced technology with user-friendliness to provide a powerful and comprehensive capture system that covers all aspects of ophthalmic image management.



# Consistency

## » Secure processing

Robust software and time proven stability plus custom built computers insure consistency, security and speed in the managing of ophthalmic images and data with IMAGEnet®.

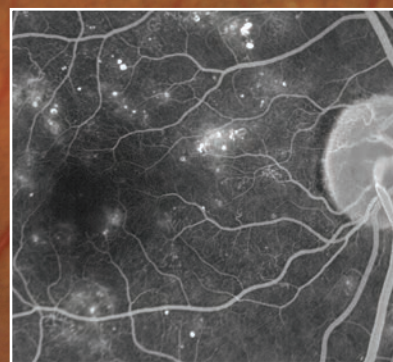
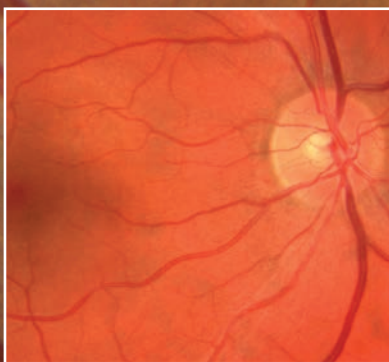
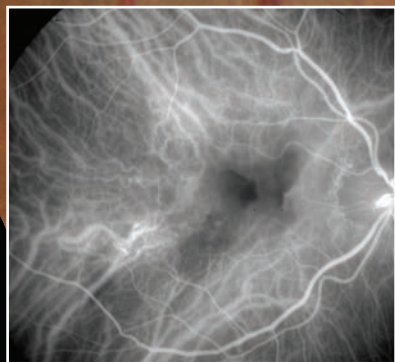
## » Advanced image management

Improved patient localization, enhancement tools, binder function for image storage, measurement module, 3D view module and color balance tool.

## » Available high and ultra-high resolution sensors

IMAGEnet® can acquire high resolution color, red-free, fluorescein angiography, indocyanine green angiography and fundus auto fluorescence from various models of retinal cameras and slit lamps through optional sensors\*.

\*Sold separately

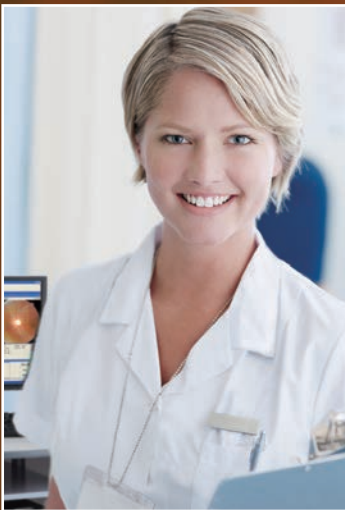
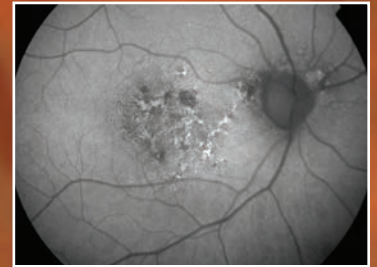
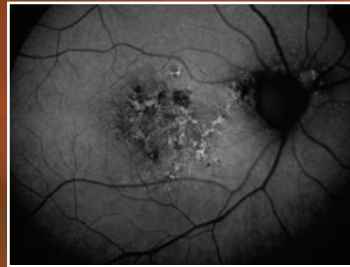




# Ease of use

## » Enhancement features at your fingertips

Conveniently located shortcut buttons permit enhancement of the image while reviewing for better detail observation. The enhancement can be saved or discarded at the operator's choice. The new automatic controlled enhancement module for monochrome images facilitates detail visualization.

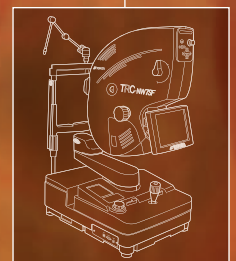
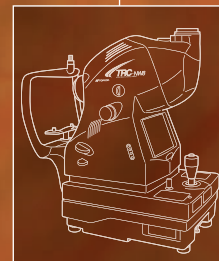
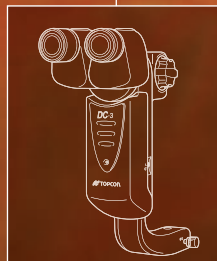
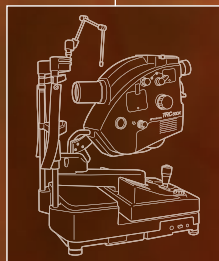
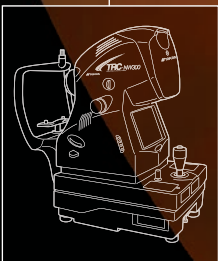


## » Intuitive software

All the information is at the operator's fingertips. No need to open programs or modules. Information windows conveniently appear and hide according to the user's needs.

## » Automatic capture device recognition

IMAGEnet® automatically sets the procedure, flash intensity and capture window directly from the retinal camera, saving time and preventing errors.



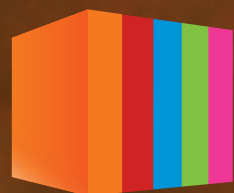
# Flexibility

## » Auto Mosaic Utility

Wide angle coverage of the retina is automatically performed by the Auto Mosaic Utility combining central and peripheral images in a seamless composite view.



synergy™  
Ophthalmic Data Management System



## » Integration with Synergy™\*

Complete integration with Synergy™\*, Topcon's comprehensive ophthalmic data management solution for any type or brand of capture device.

\*Sold separately

# Technical Specifications

## CAPTURE STATION

### Software Requirements

<b>Operating System</b>	Either of the following: <ul style="list-style-type: none"><li>• Microsoft Windows® XP Professional Service Pack 3</li><li>• Microsoft Windows® 7 Professional 64 Bits</li></ul>
<b>Database</b>	One of the following: <ul style="list-style-type: none"><li>• "Microsoft SQL Server 2008 R2 (Enterprise, Standard, Workgroup, Express)</li><li>• Microsoft SQL Server 2005 (Enterprise, Standard, Workgroup, Express) Service pack 2 or later.</li></ul>
<b>Others</b>	<ul style="list-style-type: none"><li>• Microsoft .NET Framework 4.0</li><li>• Microsoft .NET Framework 4.0 Service Pack 2</li><li>• Microsoft Windows® Media Player 10 or later</li></ul>

### Hardware Requirements

<b>Computer</b>	<ul style="list-style-type: none"><li>• IMAGEnet Custom Capture Computer</li></ul>
<b>Storage</b>	<ul style="list-style-type: none"><li>• DVD Writable drive</li></ul>
<b>Monitor</b>	<ul style="list-style-type: none"><li>• LCD 23" 1280x1024 dots, full color display</li></ul>
<b>Memory</b>	<ul style="list-style-type: none"><li>• 2 GB or RAM</li></ul>
<b>Hard Disk</b>	<ul style="list-style-type: none"><li>• SATA 3.0G b/s NCQ (7200rpm) or faster</li></ul>
<b>Display Adapter</b>	<ul style="list-style-type: none"><li>• DirectX® 9.0 support</li></ul>
<b>USB</b>	<ul style="list-style-type: none"><li>• Six USB 2.0 ports</li></ul>

## REVIEW STATION

### Minimum Requirements for Review Station

<b>Personal Computer</b>	<ul style="list-style-type: none"><li>• Compatible with Microsoft Windows® (XP or 7/64 bit)</li></ul>
<b>Operating System</b>	Either of the following: <ul style="list-style-type: none"><li>• Microsoft Windows® XP Professional Service Pack 3</li><li>• Microsoft Windows® 7 Professional 64 Bits</li></ul>
<b>Storage</b>	<ul style="list-style-type: none"><li>• DVD Writable drive</li></ul>
<b>CPU</b>	<ul style="list-style-type: none"><li>• Core2Duo E6600 4MB L2 2.4GHz 1066MHz FSB or faster</li></ul>
<b>Memory</b>	<ul style="list-style-type: none"><li>• At least 1 GB of RAM (2GB or more recommended)</li></ul>
<b>Hard Disk</b>	<ul style="list-style-type: none"><li>• SATA 3.0G b/s NCQ (7200rpm) or faster</li><li>• Installation drive: Requires a minimum of 10GB of free space</li><li>• Working drive: Requires a minimum of 30GB of free space</li></ul>
<b>Display Adapter</b>	<ul style="list-style-type: none"><li>• DirectX® 9.0 support</li></ul> <p>(Some display adapters may cause problems such as unstable movie replay. The on board type display adapters often cause problems. It is recommended to use the display adapter that is inserted to the PCI Express x 16 slot)</p>
<b>USB</b>	<ul style="list-style-type: none"><li>• At least two USB 2.0 ports must be available</li></ul>