

# ONLINE PRINTING AUCTION

**HEIDELBERG SHEET FED PRESSES • CTP SYSTEM  
COMPLETE BINDERY • PLANT SUPPORT EQUIPMENT**

By Order of

## Accelerated Printing

106-K Oakgrove Road – Sterling, Virginia 20166



1 of 2

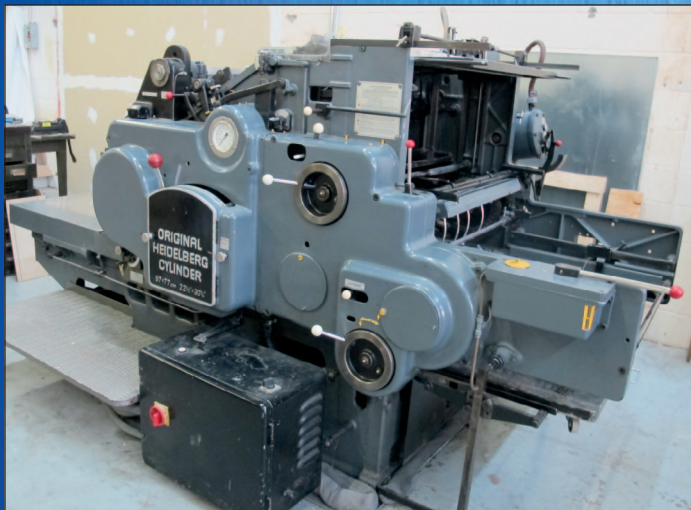
*Heidelberg 2-Color Sheet Fed Press  
Model #SORMZ*



New  
2008

*Fujifilm/Dainippon Screen Dart CTP System  
Model PT-R4300E*

**SALE DATE: THURSDAY, MAY 19, 2016, 1:00 PM (ET)**  
**OPEN HOUSE INSPECTION: WEDNESDAY, MAY 18, 9 AM TO 4 PM (LOCAL TIME)**



*Original Heidelberg Cylinder Die Cutter  
22 1/2" x 30 1/4" Model #SBG*



*Duplo Dynamic Booklet Maker Model DBM-250*

Sale under Management of:



**THOMAS INDUSTRIES &  
ADVANCED PRINT TECHNOLOGIES**

THE NATIONS LEADING FULL SERVICE PRINTING & GRAPHICS TEAM



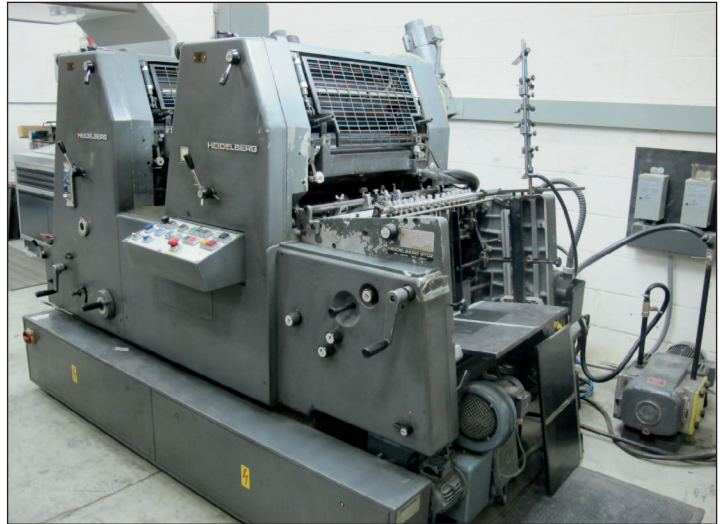
WORLDWIDE AUCTION & APPRAISAL SERVICES



# ONLINE BIDDING ONLY – REGISTER & BID AT WWW.THOMASAUCTION.COM



Heidelberg 2-Color Sheet Fed Press Model #SORMZ



Heidelberg 2-Color #GTOZ Sheet Fed Printing Press



Fujifilm/Dainippon Screen Dart CTP System Model PT-R4300E



Duplo Dynamic Booklet Maker Model DBM-250



MBO B20-1-20/4 4/4 Continuous Feed Folder

## PRINTING PRESSES - SHEET FED

**Heidelberg** 2-Color Sheet Fed Press Model #SORMZ, S/N 535450 (New 1992), Meter Reads 32,642,017 Impressions w/ Alcolor Dampening & Royse Space-Saver Circulation System

**Heidelberg** 2-Color Sheet Fed Press Model SORMZ S/N 529939 (New 1989), Meter Reads 76,233,781 Impressions w/ Alcolor Dampening, IR Dryer & Royse Space-Saver Circulation System

**Heidelberg** 2 Color Sheet Fed Press 14 1/2 x 20 1/2, Model #GTOZ, S/N 692351 (New 1989), Meter Reads 40,374,432 Impressions, Alcolor Dampening & IR Dryer, Numbering Unit & Royse Space-Saver Chirculation System w/ Additional Rietschie Vacuum Pump

**AB Dick** Offset Duplicator Press Model 9850 w/ T-Head & Press Specialities Variable Speed Envelope Feeder

## CTP SYSTEM

**Fujifilm/Dainippon Screen** Dart 4300E CTP System Model #PT-R4300E, S/N 11004 (New 2008), w/ Rampage RIP



Polar Mohr 45" Paper Cutter Model 115-EMC S

## BOOKLET MAKERS

**Duplo** Dynamic Booklet Maker Model DBM-250 (New 1999), w/ (2) Duplo DC 10,000S 10-Station Collating Towers, w/ Duplo Trimmer Model #250T S/N 990201039 & Duplo Stacker Model #DC-48ST

## FOLDERS

**MBO** B20-1-20/4 4/4 Continuous Feed Folder 20", S/N R03/14 w/ MBO MS Digital Batch Counter

## PAPER CUTTERS

**Polar Mohr** 45" Paper Cutter Model 115-EMC S/N 5531205 (New 1985), Air Bed Table & Light Safety Curtain,



Rollem Numb/Score/Perf Machine Model #Auto 4

## NUMBER/SCORE/PERF MACHINES

**Rollem** Numbering/Scoring/Perforating Machine Model #Auto 4, S/N YSM692/198 w/ Air Feed

## DIE CUTTERS

**Original Heidelberg** Cylinder Die Cutter 22 1/2" x 30 1/4", Model #SBG, S/N 35498

## DRILLS

**Challenge** 3-Spindle Paper Drill Model EH-3A S/N 66474

**Challenge** Single Spindle Paper Drill, Bench Top, Model #JO, S/N 965505



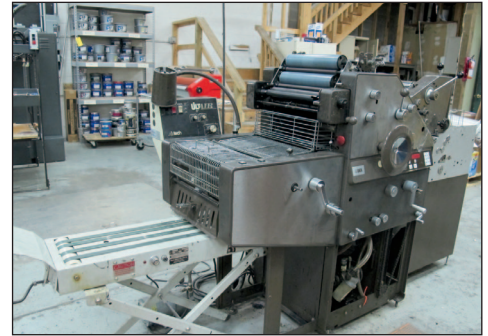
# COMPLETE LOT CATALOG, PHOTOS, REGISTRATION & BIDDING [WWW.THOMASAUCTION.COM](http://WWW.THOMASAUCTION.COM)



Original Heidelberg Cylinder Die Cutter 22 1/2" x 30 1/4" Model #SBG



Epson Stylus Pro 9880 Wide Format Proofer Model #K132A



AB Dick Offset Duplicator Press Model 9850



Beseler Shrink Wrapper Model 2016-MB-SL



Mutoh Value Jet VJ-1624 Wide Format Printer 66"



Juki Sewing Machine DDL-8700



Crown Electric Stand Up Type Forklift Model 45RRTT-S



Just Normlicht Color Control Color Viewing Station



Challenge 3-Spindle Paper Drill Model EH-3A

## FORKLIFTS/MATERIAL HANDLING

**Crown** Electric Stand Up Type Forklift Model 45RRTT-S, S/N 1A124058, 4,500 Lb Cap w/ Side Shift & GNB 36 Volt Battery Charger Model #GTC118-750T1  
**Jet** Hydraulic Pallet Jack Model PT-2748T 5,500 Lb Cap

## PLANT SUPPORT

(2) **Just Normlicht** Color Control Color Viewing Station Professional; **Juki** Sewing Machine DDL-8700 S/N 4DDEG26421; **Hamilton** Die Cabinet/Layout Table w/ **JF Helmold** Die Cutters/ Benders (2) **X-Rite** 500 Series Spectrodensitometer Model 530 & 508; **Acme Morrison** Book Stitcher Model N3A-3/4 S/N 17681; **MacPro** Computer (New 2012) w/ Flat Screen Monitor, OSX 10.8.5, **HP** Laser Jet 5000N Network Printer; **Unigraph** Thermal Plate Processor Model FLH85P; **Syntron** Bench Top Paper Jigger Model PJ15, Light Tables, Liquid Storage Cabiners, Braden Sutphin Inks, Portable Carts, Dust Collectors, etc.

## ROUND CORNER MACHINES

**Lassco** Cornerounder Corner Machine Model #50, S/N 6173  
**Lassco** Cornerounder Cornering Machine Model #50, S/N 7780

## PACKAGING MACHINES

**Beseler** Shrink Wrapper Model 2016-MB-SL S/N 00797253, w/ Beseler Heat Shrink Tunnel Model T-16-8, S/N 00797275  
**Beseler** Shrink Wrapping System Model 1812 S/N 01097713

## WIDE FORMAT PRINTERS/ PROOFERS

**Mutoh** Value Jet VJ-1624 Wide Format Printer 66", S/N G06U000596 w/ HP Z210  
 (2) **Epson** Stylus Pro 9880 Wide Format Proofer Model #K132A (New 2007 & 2008)

## VINYL CUTTER

**Summa** S160 T-Series Tangential Vinyl Cutter S/N 611104-10003 (New 2012) w/ Dell Precision T-1650 Computer w/ Summa Software

**SALE DATE / FIRST LOT CLOSES:  
 THURSDAY, MAY 19, 2016, 1:00 PM (ET)**

Under Management of:



**THOMAS INDUSTRIES**  
2414 Boston Post Road  
Guilford, CT 06437-2310  
(203) 458-0709 • (203) 458-0727 Fax  
<http://www.thomasauction.com>



## ONLINE PRINTING AUCTION

By Order of

### Accelerated Printing

106-K Oakgrove Road – Sterling, Virginia 20166

#### SALE DATE:

**THURSDAY, MAY 19,  
1:00 PM (ET)**

#### INSPECTION:

**WEDNESDAY, MAY 18,  
9 AM to 4 PM**

**Buyer's Premium: 15%**

**COMPLETE LOT CATALOG & PHOTOS  
AT [WWW.THOMASAUCION.COM](http://WWW.THOMASAUCION.COM)**

FORWARDING SERVICE REQUESTED

## HEIDELBERG SHEET FED PRESSES • CTP SYSTEM COMPLETE BINDERY • PLANT SUPPORT EQUIPMENT



1 of 2

Heidelberg 2-Color Sheet Fed Press Model #SORMZ



MBO B20-1-20/4 4/4 Continuous Feed Folder

### AUCTION INFORMATION

By Order of

**Accelerated Printing**  
106-K Oakgrove Road  
Sterling, Virginia 20166

#### SALE DATE:

**THURSDAY, MAY 19,  
1:00 PM (ET)**

#### OPEN HOUSE INSPECTION:

**WEDNESDAY, MAY 18,  
9 AM to 4 PM**

**Staggered Closing Times:** Lots Have  
60-Second Staggered Closing Times.

**Auto Extend Bidding:** If a bid is  
submitted with less than 3-minutes  
remaining, the closing time for that  
lot will be extended by 3-minutes.

**Payment Due In Full:**  
Friday, May 20, 2016

**Buyer's Premium: 15%**

**Payment Types:** Certified  
Check or Wire Transfer

**As-Is Where-Is:** All Items Are Sold  
"As-Is Where-Is" With No Warranty or  
Guarantee of Operating Condition.  
Auctioneer Strongly Recommends  
That Buyers Inspect Equipment Prior  
to Bidding.

**Removal:** All items must be removed  
by Friday, June 3, 2016. Buyers of the  
printing presses will be given an extra  
week.

**Removal Costs:** Buyers are fully respon-  
sible for all cost to remove their pur-  
chases. Please get removal quotes  
prior to bidding and bid accordingly.

**Legally Binding Contract:** All bids con-  
stitute a legally binding contract and  
bidders will be legally obligated to  
make payment and remove items in  
accordance with the terms and condi-  
tions of the sale.



**THOMAS INDUSTRIES**  
2414 Boston Post Road  
Guilford, CT 06437-2310  
(203) 458-0709 • (203) 458-0727 Fax  
<http://www.thomasauction.com>